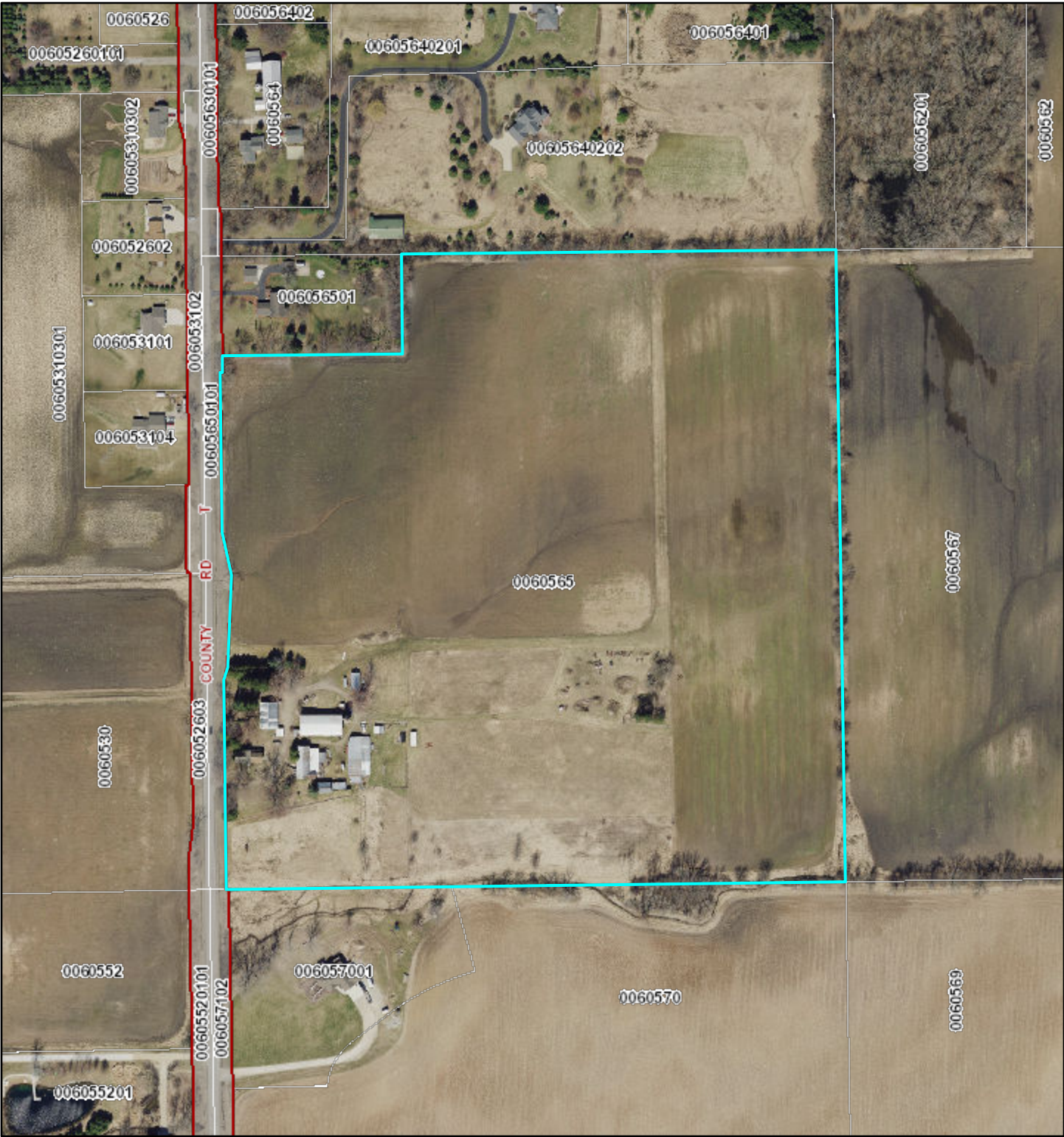


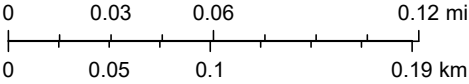
# Sturgis CSM Aerial Map 1



7/26/2023, 10:45:21 AM

1:3,558

- Adjacent Counties
- Lakes, Ponds and Rivers
- Navigable Waterways**
- Navigable - Permanent (unchecked)
- Navigable - Intermittent (unchecked)
- Navigable - Stream (unchecked)
- Navigable - Permanent (checked)
- Navigable - Intermittent (checked)
- Navigable - Stream (checked)
- Tax Parcel Boundary
- Road ROW
- Municipal Boundary



Winnebago County GIS, Imagery Date: April 2020