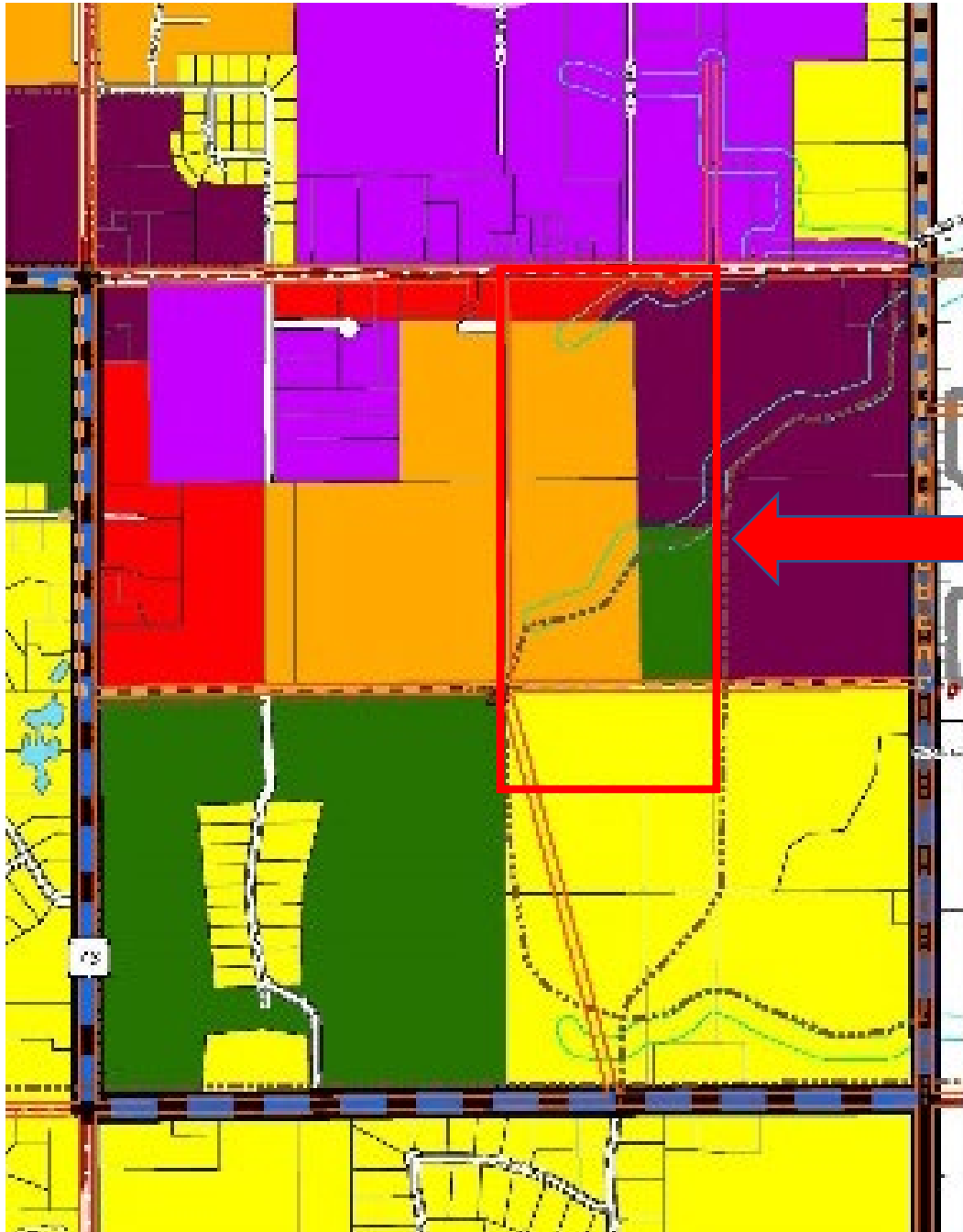


Tax ID #'s 006-0617, 006-0618, & 006-0632 Concept Plan Review Application – **PRELIMINARY/DRAFT Future Land Use Map**



Town of Clayton
Winnebago County

Future Land Use

- Agriculture/Rural
- Conservation/Greenspace
- Working Lands
- Residential - Single and Duplex
- Medium and High Intensity Residential
- Multi-Family Residential
- Neighborhood Center Mixed Use
- Manufactured Housing
- Business
- Light Industrial, Warehousing, and Distribution
- Non-Metallic Mining Sites
- Utilities and Public Facilities
- Recreation and Conservation
- Abandoned Landfill Site
- Open Water/Pool Lakes

Proposed Roads

- New

Other Features

- Tiered Development Boundaries
- 10/76 Corridor Development Area
- Roads
- Recreation Trails
- Electric Transmission Lines
- Airport Zoning
- Town of Clayton Sanitary District #1
- Conservation/Drainage Way
- Cities, Towns, & Villages
- Sections
- Parcels
- School District Boundaries
- Official Mapped ROW Extensions

Cedar CORPORATION
Community Infrastructure Architecture
Environmental Services
800-475-7512
www.cedarcorp.com
Green Bay - Menomonie - Madison - Cedarburg



This base map was created with data from Winnebago County Planning Department who assumes no liability for the accuracy of this data and any use or misuse of its content is the responsibility of the user. Changes were made by Cedar Corporation under the direction of the Town of Clayton

Map Created: November 30, 2022 - Updated: February 2, 2023