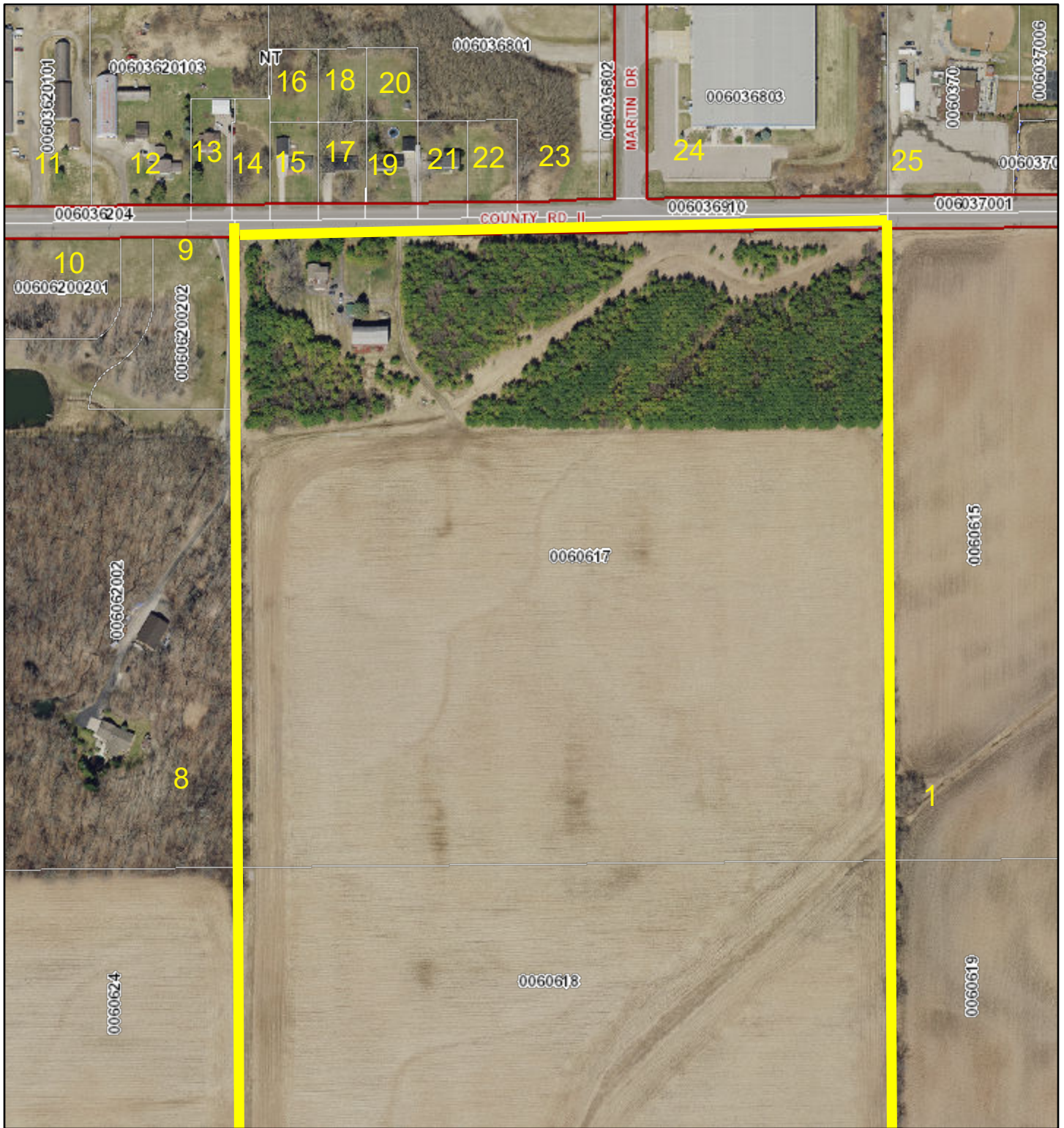


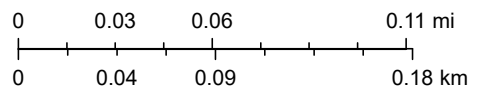
Notices 006-0617 & 0618 & 0632



4/26/2023, 5:02:13 PM

1:3,452

- Adjacent Counties
- Lakes, Ponds and Rivers
- Navigable Waterways
- Navigable - Permanent (unchecked)
- Navigable - Intermittent (unchecked)
- Navigable - Stream (unchecked)
- Navigable - Permanent (checked)
- Navigable - Intermittent (checked)
- Navigable - Stream (checked)
- Tax Parcel Boundary
- Road ROW
- Municipal Boundary



Winnebago County GIS, Imagery Date: April 2020