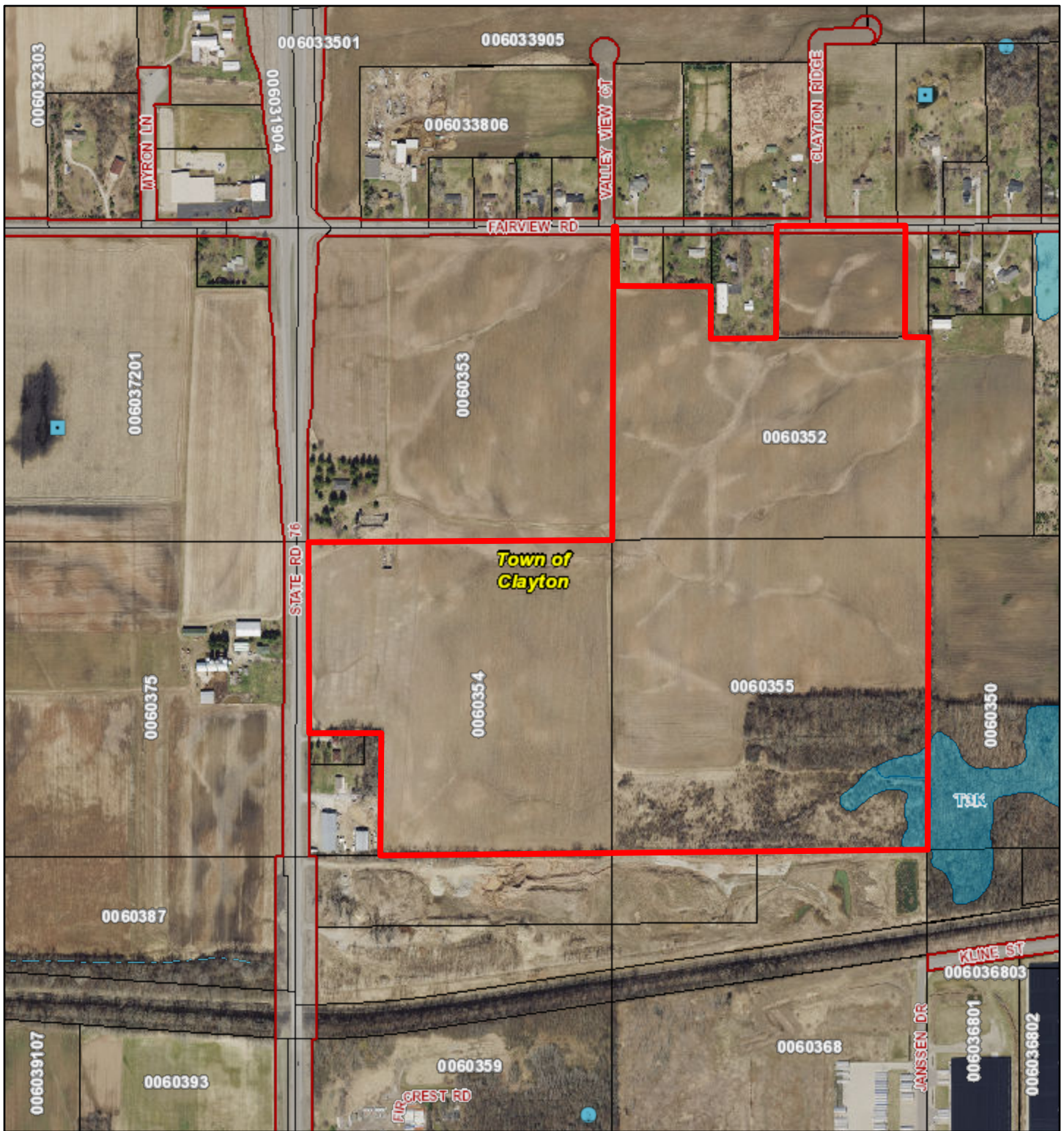


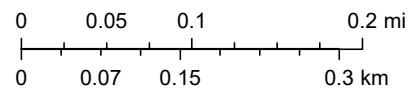
# VanderHeiden/Coppens Wetland Map



9/29/2023, 12:06:30 PM

1:7,134

- |                              |                                      |
|------------------------------|--------------------------------------|
| Wetland Areas                | Project Review Area                  |
| Wetland                      | Surface Water Drainageway District   |
| Open Water Wetland           | Tax Parcels                          |
| Wetland Features             | Navigable Waterways                  |
| Undelineated Wetland < 2 Ac. | Navigable - Permanent (unchecked)    |
| Dammed pond                  | Navigable - Intermittent (unchecked) |
| Excavated pond               |                                      |



Winnebago County GIS, Imagery Date: April 2020