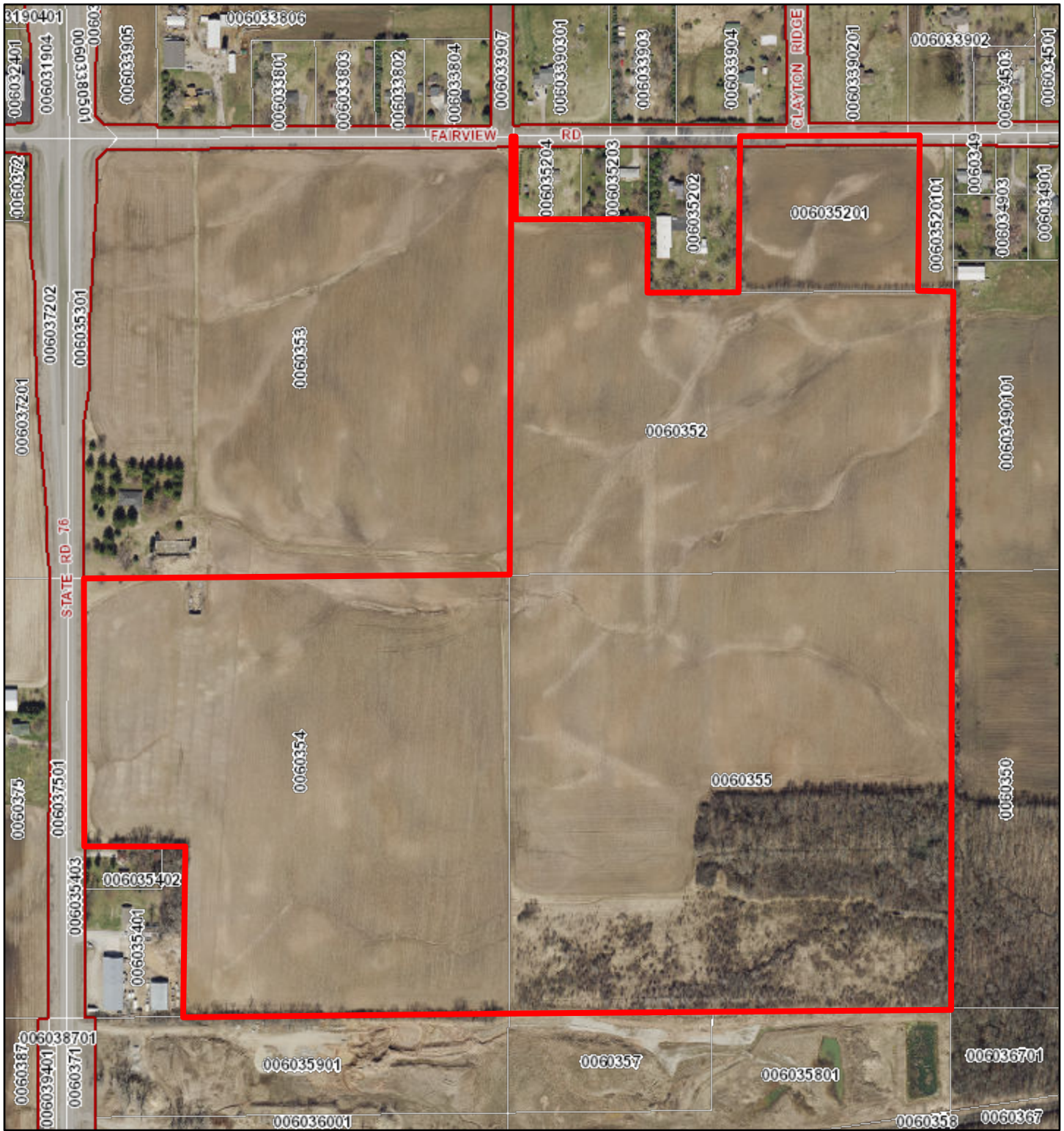


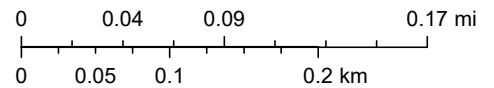
VanderHeiden/Coppens CPR App - Aerial Map 1



9/29/2023, 11:53:07 AM

1:5,095

- Adjacent Counties
- Lakes, Ponds and Rivers
- Navigable Waterways
- Navigable - Permanent (unchecked)
- Navigable - Intermittent (unchecked)
- Navigable - Stream (unchecked)
- Navigable - Permanent (checked)
- Navigable - Intermittent (checked)
- Navigable - Stream (checked)
- Tax Parcel Boundary
- Road ROW
- Municipal Boundary



Winnebago County GIS, Imagery Date: April 2020