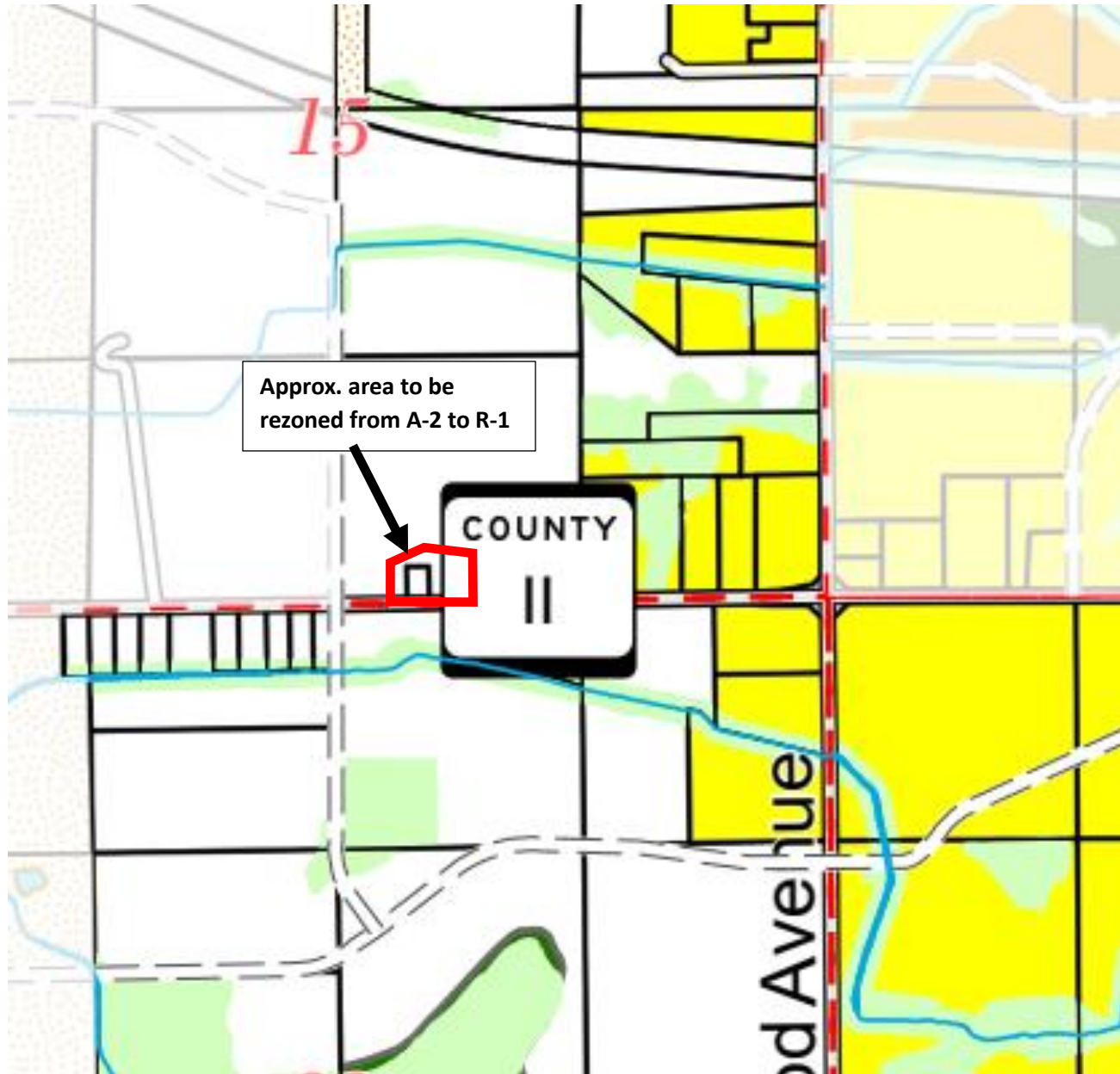


# 2023 RECOMMENDED Town of Clayton Comprehensive Plan/Future Land Use Map

Kulogo Re-Zoning Application (PIN 006-0420; 3438/3442 County Rd II) – General Agriculture (A-2) District to Rural Residential (R-1) District

Map 11-1B



## Town of Clayton Winnebago County Future Land Use (2040) Tier 2

- Agriculture/Rural
- Conservation/Greenspace
- DNR Property
- Working Lands
- Residential - Single and Duplex
- Medium and High Density Residential
- Neighborhood Center Mixed Use
- Business
- Business Park
- Gateway Commercial & Retail
- Light Industrial, Warehousing, and Distribution
- Utilities and Public Facilities
- Parks and Recreation
- Abandoned Landfill Site
- Open Water/Pond/Lake
- Non-Metallic Mining Sites
- Other Non-Metallic Mining Sites

### Other Features

- Cities, Towns, & Villages
- Sections
- Parcels
- Airport Zoning
- Town of Clayton Sanitary District #1
- Roads
- Future Roads
- Recreation Trails
- Navigable Waterways
- Commercial Gateways



This base map was created with data from Winnebago County Planning Department who assumes no liability for the accuracy of this data and any use or misuse of its content is the responsibility of the user. Changes were made by Cedar Corporation under the direction of the Town of Clayton.

Map Created: November 30, 2022 - Updated: July 6, 2023