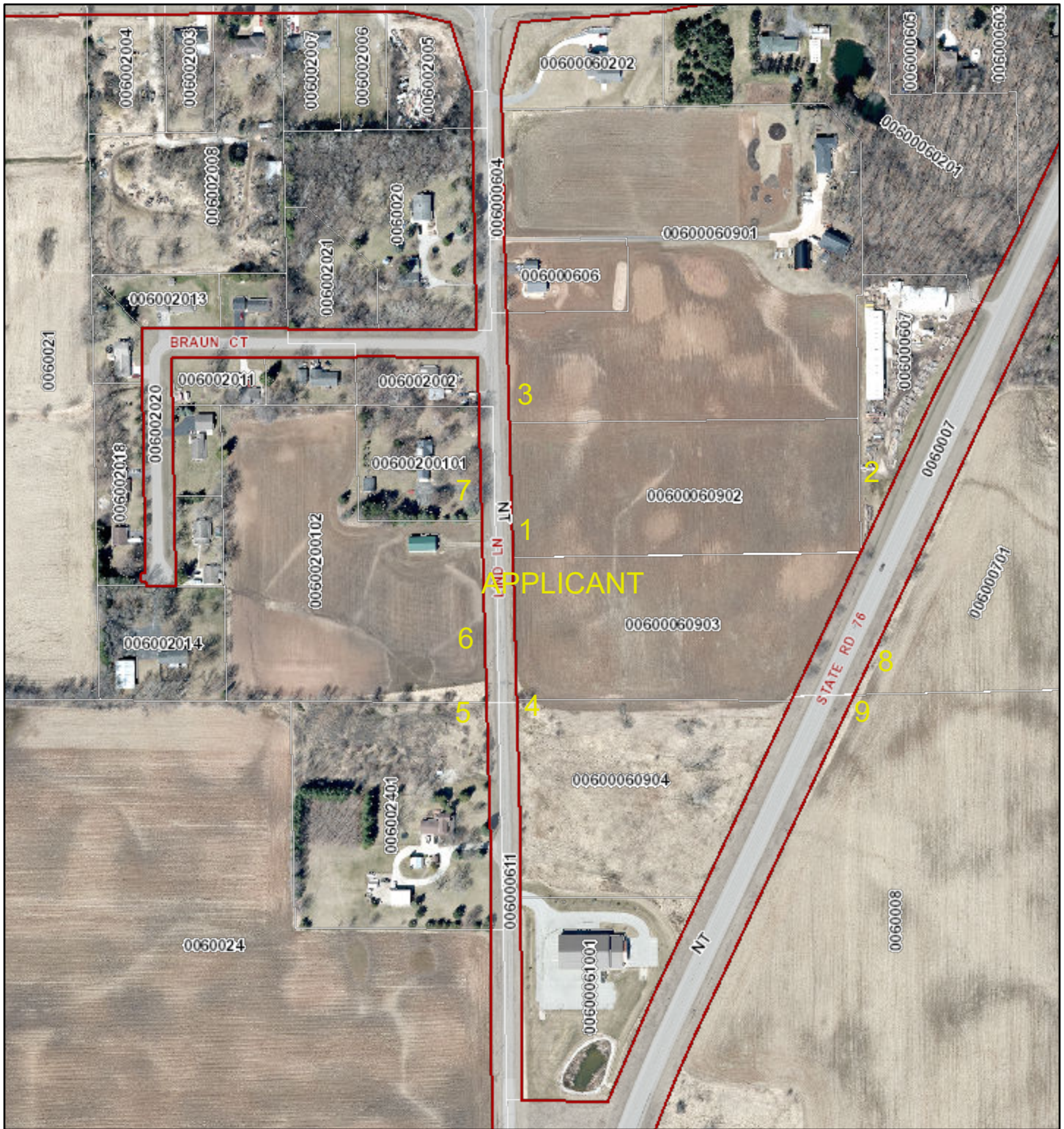


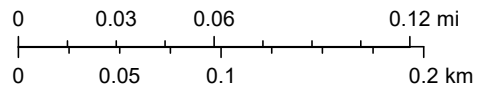
REZONING NOTICE



3/9/2026, 3:08:45 PM

1:3,730

- Adjacent Counties
- Lakes, Ponds and Rivers
- Navigable Waterways
- Navigable - Permanent (unchecked)
- Navigable - Intermittent (unchecked)
- Navigable - Stream (unchecked)
- Navigable - Permanent (checked)
- Navigable - Intermittent (checked)
- Navigable - Stream (checked)
- Tax Parcel Boundary
- Road ROW
- Municipal Boundary
- Red: Band_1



Winnebago County GIS