

TECHNICAL MEMORANDUM

AUGUST 1, 2024



To: Town of Clayton
Kelly Wisnepske, Administrator

From: McMahon Associates, Inc.
Brad D. Werner, P.E. | Vice President / Sr Municipal Engineer

Re: Bennett's Auto Drainage
McM. No. C0023-09-24-00564

At your request, McMahon Associates, Inc. (McMahon) is providing a Technical Memorandum regarding a drainage concern at the northwest corner of Winnegamie Drive and Island Road located in the Town of Greenville. Bennett's Auto has raised concerns of flooding on their property at this location and there is concern that drainage from the Town of Clayton is contributing to their problem.

On July 31st McMahon conducted a site visit at the location to visually assess the drainage patterns and determine if it is reasonable to assume that drainage from the Town of Clayton is impacting Bennett's Auto. The Winnegamie Drive centerline is the border between the Town of Clayton and the Town of Greenville. From general observation, the center line of the road appears to be the high point of Winnegamie Drive and runoff goes north and south to the respective ditches in Greenville and Clayton (see Bennett's Auto overview map).

The low point of this area appears to be at the Island Road and Winnegamie Drive intersection. Water is collected from Clayton and discharged to Greenville's side of Winnegamie Drive at the intersection as shown on the attached diagram. This collection point is also shown in Picture 1. Water is discharged at the northeast corner of the intersection where it drains to wetlands to the northeast of the intersections (Pictures 2 and 3). No other cross-culverts transporting water from the south side of Winnegamie Drive to the north side of Winnegamie Drive were observed.

The northwest quadrant of the intersection receives water from the north side of Winnegamie Drive to the west, and the west side of Island Road from the north. The northwest corner of the intersection appears to be the low point and receives drainage from these areas. The north side of Winnegamie Drive is partially urbanized west of Bennett's Auto. The area in front of Bennett's Auto has a culvert installed in the ditch with a few surface collection points. We assume this was done to remove a steep ditch, with most likely a wet bottom, to allow for a more mowable and maintainable area in front of the car lot. The culvert discharges at the northwest corner of Winnegamie Drive and Island Road in the ditch (see Pictures 4, 5 and 6). Island Road ditch drains from the north to the intersection. There are two driveway culverts on the west Island Road ditch (see Picture 7) and no culverts on the east Island Road ditch (see Picture 8).

TECHNICAL MEMORANDUM

AUGUST 1, 2024

Upon investigation of the northwest corner of the intersection there is no culvert that extends either south across Winnegamie Drive or east across Island Road. There is no evidence that any surface water runoff collected north and west of this intersection has an outlet once it reaches the northwest corner of the intersection. It is assumed that water stays in these ditches or ultimately enters the pond in this quadrant.

In conclusion, visual inspection of this area shows evidence that the runoff from the Town of Clayton has a single discharge point to the Town of Greenville. This discharge point is the northeast corner of Winnegamie Drive and Island Road. This discharge point does not impact Bennett's Auto. There is no evidence that surface water drainage ponding at the northwest corner of this intersection has a discharge pipe. Without a discharge pipe, surface water should be expected to flood the northwest quadrant of the intersection.



▲ 1 - Culvert on South Side of Winnegamie Drive



▲ 2 - Culvert at Northeast Corner



▲ 3 - Northeast Corner of Island Road and Winnegamie Drive Looking East



▲ 4 - Bennett's Auto Ditch



▲ 5 – Bennett’s Auto Ditch/Culvert



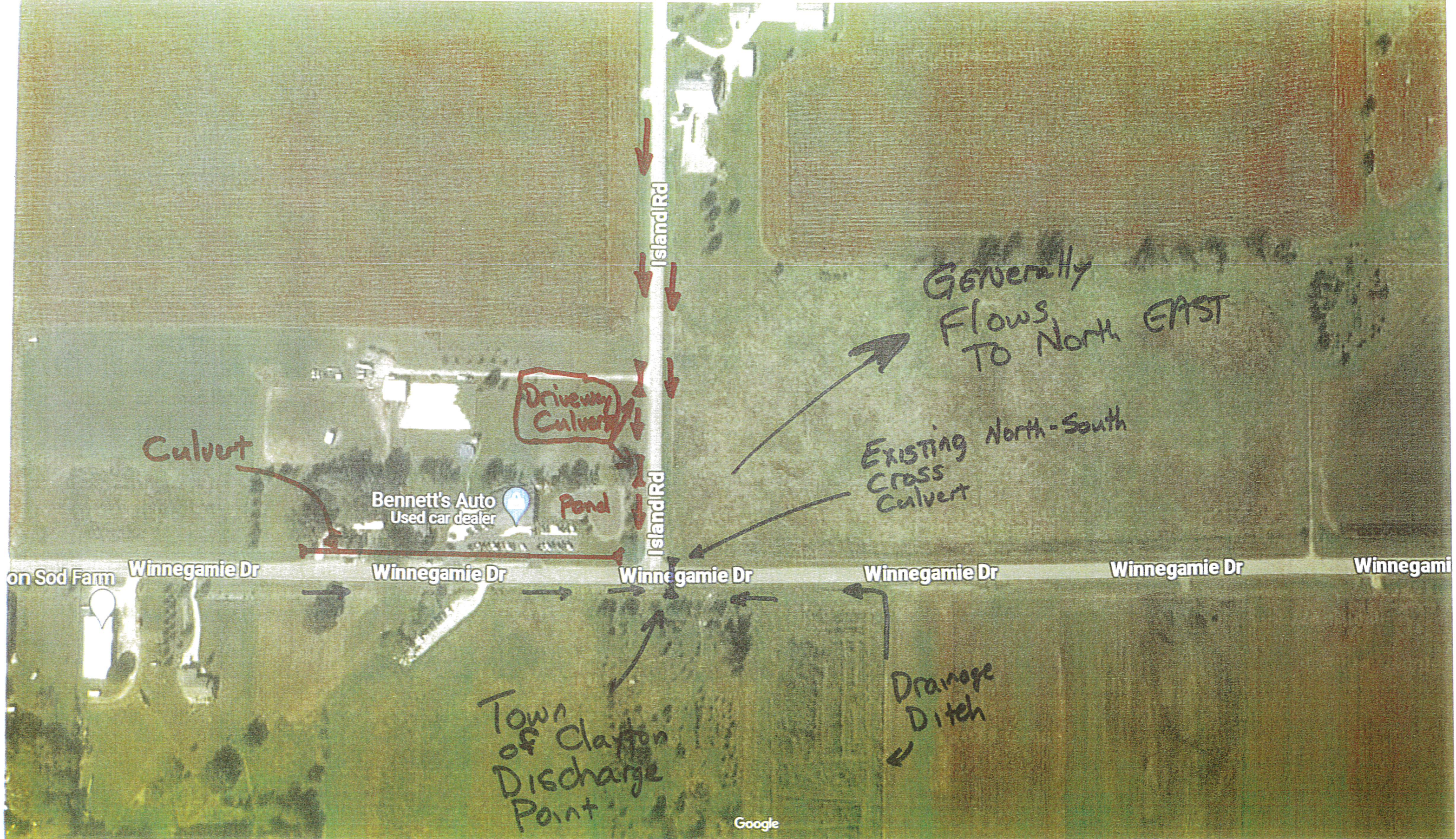
▲ 6 – West End of Winnegamie Drive Culvert (North Side) Upstream End of Bennett’s Auto Culvert



▲ 7 – West Ditch of Island Road Looking North



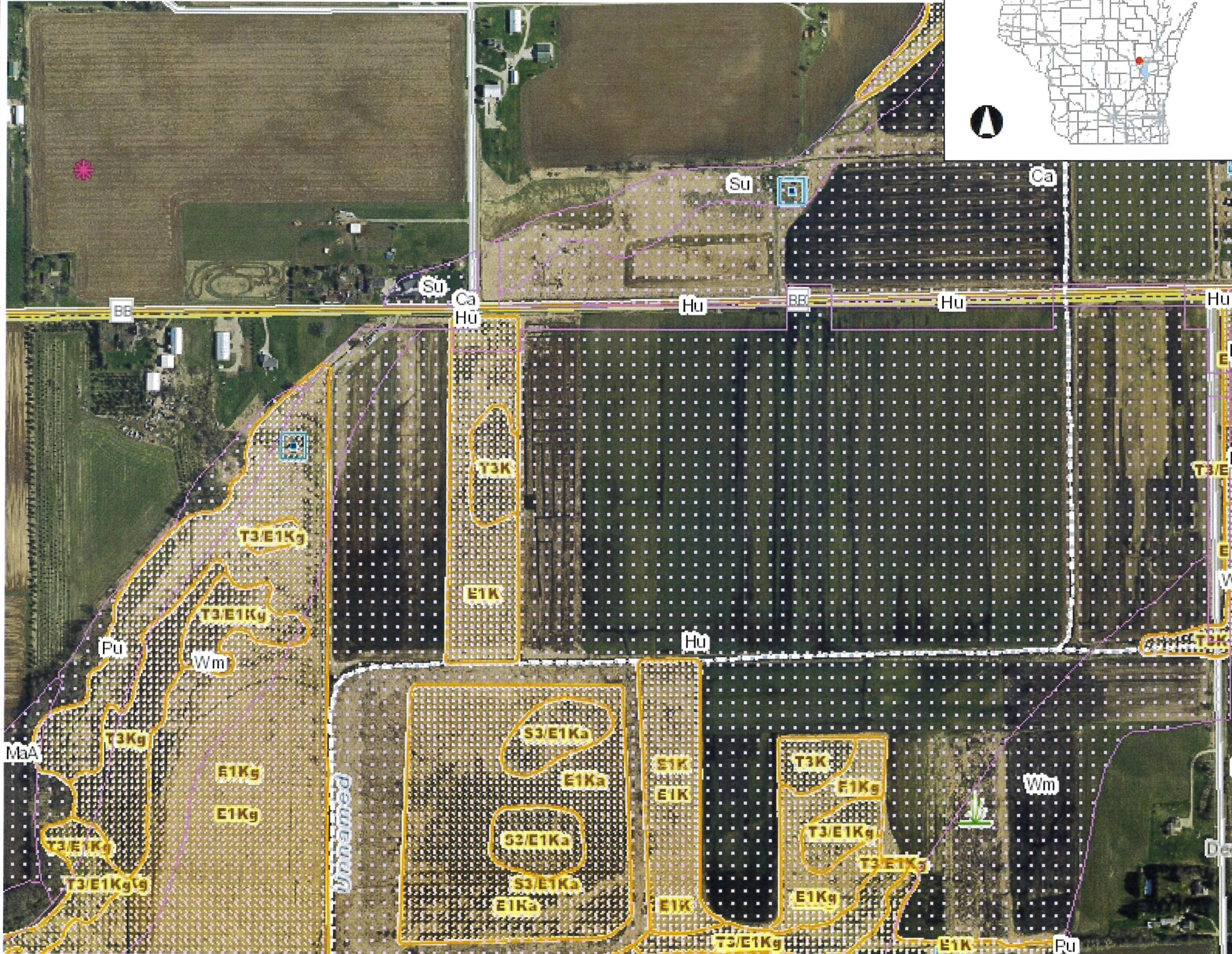
▲ 8 – East Ditch of Island Road Looking North



Bennett's Auto OVERVIEW MAP



Bennett's Auto Drainage



Legend

- Wetland Indicators
- Lake Class Areas
- Riverine/ditch Class Areas
- Wetland Class Areas
- Wetland Class Points**
- Dammed pond
- Excavated pond
- Filled/draind wetland
- Wetland too small to delineate
- Filled excavated pond
- Filled Points
- Wetland Class Areas
- Filled Areas
- Lake Class Areas
- Riverine/ditch Class Areas
- Wetland Class Areas
- Wetland Class Points**
- Dammed pond
- Excavated pond
- Filled/draind wetland
- Wetland too small to delineate
- Filled excavated pond
- Filled Points
- Wetland Class Areas
- Filled Areas
- Wetland Identifications and Confirmations
- NRCS Wetspots
- Municipality
- State Boundaries
- County Boundaries
- Major Roads**
- Interstate Highway
- State Highway
- US Highway

0.3 0 0.13 0.3 Miles

NAD_1983_HARN_Wisconsin_TM

1:7,920

DISCLAIMER: The information shown on these maps has been obtained from various sources, and are of varying age, reliability and resolution. These maps are not intended to be used for navigation, nor are these maps an authoritative source of information about legal land ownership or public access. No warranty, expressed or implied, is made regarding accuracy, applicability for a particular use, completeness, or legality of the information depicted on this map. For more information, see the DNR Legal Notices web page: <http://dnr.wi.gov/legal/>

Notes