



CHILDREN'S TRUST
OF ALACHUA COUNTY

STEERING COMMITTEE VIRTUAL STRATEGIC PLANNING SESSION MINUTES

January 19, 2023, at 9:30 AM

Virtual Meeting

Call to Order

Chair Cheryl Twombly called the virtual meeting to order at 9:30am

Roll Call

Present

Cheryl Twombly
Ken Cornell
Pat Snyder
Lee Pinkoson
Barzella Papa
Bishop Chris Stokes
Candice King
Christi Arrington

Trust staff present

Marsha Kiner
Kristy Goldwire
Bonnie Wagner
Elizabeth Cayson
Mia Jones
Dan Douglas
Demetrica Tyson
Diana Sanchez

Also present

Nikki Martin-Bynum
Vashti Rutledge

Discussion Items

1. **Environmental Scan and Listening project update.** **Bonnie Wagner**

Listening project

Trust staff member B. Wagner shared that the surveys are closed, and she thanked the group for their assistance. Wagner showed the list of completion by municipality and the project timeline. She highlighted next steps to include the data party scheduled for February 23, along with other upcoming dates.

Member Pinkoson asked if the portion of Brooker mentioned in the presentation was in Alachua County.

Member King spoke to Member Pinkoson's question informing him that the information was from Acorn clinic in Alachua County.

Environmental scan

Staff member Wagner reminded the committee during the last meeting, she shared some secondary and administrative data on child wellbeing indicators as well as some county level population statistics. It is still a work in progress, and more information could be added in mental health and safety measures. There were a few suggestions in quality childcare, childcare acts, and accessibility. Wagner is looking to identify the resources in our communities. She is also looking at what are other funders are funding, other areas of alignment that we should be considering, and who are our partners.

Chair Twombly thanked Staff member Wagner for all her hard work.

Member Cornell acknowledged that the conversation happened at the county commission level before the Trust was formed. The goal was to not have the Trust funding everything. We should be able to articulate county wide what other agencies are funding so that we can utilize all resources properly.

2. **Mission, Vision, Principles Alignment, and CTAC theories of change.** **Nikki Martin-Bynum and Vashti Rutledge**

Nikki Martin-Bynum Strategic planner led the discussion on Mission, Vision, and Principles.

The mission is to fund and support a coordinated system of community services that allows all youth and their families to thrive. The vision is to facilitate equitable access and opportunities for all children and families, of Alachua County to ensure every child reaches their maximum potential.

- Question for the group that was also asked of the staff - when you envision a system of support for our children and youth in Alachua County that works effectively, what does that look like?

Group discussion

Member Snyder stated when she sees the statement, she thinks about putting children and families in the community at the center. Thinking about how supports, programs and systems warp around them.

Member Stokes stated the key is to fund and support coordinated efforts. His belief is that key to community is unity. You cannot have unity in the community without the unity.

Member King believes that communication systems are important to be effective.

Member Papa stated two words were principal - coordinated and thriving. The only way that we can have coordination is to have that communication. Working in a collaborative spirit and then for us to know that the child and the families are thriving is the follow-up and the follow-through as well. She said follow up and follow through are necessary to ensure that all are thriving.

Chair Twombly believes that cross program communication is important. Providers should know what services other providers offer; this will help us to not duplicate services.

Vashti Rutledge led the group discussion on theory of change the roadmap to how you reach your mission and vision.

- Current-Where is the Trust today and what does the mission look like in action?
- Inputs- What resources and assets are available to work towards our goals?
- Output- What are the key activities necessary reach desired outcomes? Financial resources
- Outcomes- What are the intermediate or short-term outcomes we can benchmark our progress with? What long-term outcomes are defined?
- Impact- If we are successful, what will the community look like?

Group discussion

Vashti Rutledge asked where we as an organization are and how we show up in the community.

Member Stokes believes that where we are as an organization is evolving, we are getting better we are looking to expand and grow.

Member Snyder shared examples of the output are TeensWork Alachua and the Business Leadership Institute.

ED Kiner sees the Trust as it was birthed and now, in the toddler phase. Kiner also believes that the Trust is evolving and shares the excitement of the strategic plan.

Member Papa views the Trust as a true partner - a toddler that is growing and evolving.

Strategic planner Vashti Rutledge mentioned to the group that it's incredibly humble for an organization to not say that we are grown.

Member Cornell stated changing the systems within our community to end generational poverty and give every kid a chance is key.

Trust staff Cayson believes that through community engagement and sponsorship, the Trust is evolving and building trust. Cayson has been working with communications to have pieces to communicate resources to share with the community.

ED Kiner believes that if the community understands that the Trust values them, then they will tell you who needs to be a part of the support conversation.

Member Arrington shared with the group a necessary key activity to reach desired outcomes is increased spaces for children and youth in childcare settings. Eliminating the language that "Infants are too expensive to serve" from our conversations.

Member King believes that identifying programs that target gap areas and adding them to list of CTAC support is important for the community.

Member Pinkoson stated at some point decisions will need to be made on what the priority focus will be and what we want to see improved.

Member Snyder believes that all children getting off to a healthy start is important. She further shared that her understanding is from taking a more results-based accountability framework perspective and thinking about outcomes.

Trust staff K. Goldwire stated success in the community looks like caregivers who have children with specific needs having access to resources. Resources to help them be

successful as it relates to reading or comprehension, speech, or whatever they need. For her it can be identified as a source or service provided, and where barriers to access have been eliminated.

General Public Comments-none

Chair C Twombly adjourned the meeting at 12:00pm.

DRAFT

Strategic Planning Process

Children's Trust of Alachua County

1.19.23



Vashti Rutledge
Seek Higher Ground
Member



Nikki Martin-Bynum
Seek Higher Ground
Founder & Chief Vision Keeper



Agenda

9:30 - 9:40 am

Call to Order

Cheryl Twombly, Steering Committee Chair

9:40 - 10:00 am

Environmental Scan & Listening Project Update
Bonnie Wagner , CTAC Research, Planning, and
Evaluation Coordinator

10:00 11:45 am

Alignment Discussion

Seek Higher Ground

Vashti Rutledge & Nikki Martin-Bynum

11:45-12:00 pm

Closing & Next Steps

Seek Higher Ground

Nikki Martin-Bynum & Vashti Rutledge



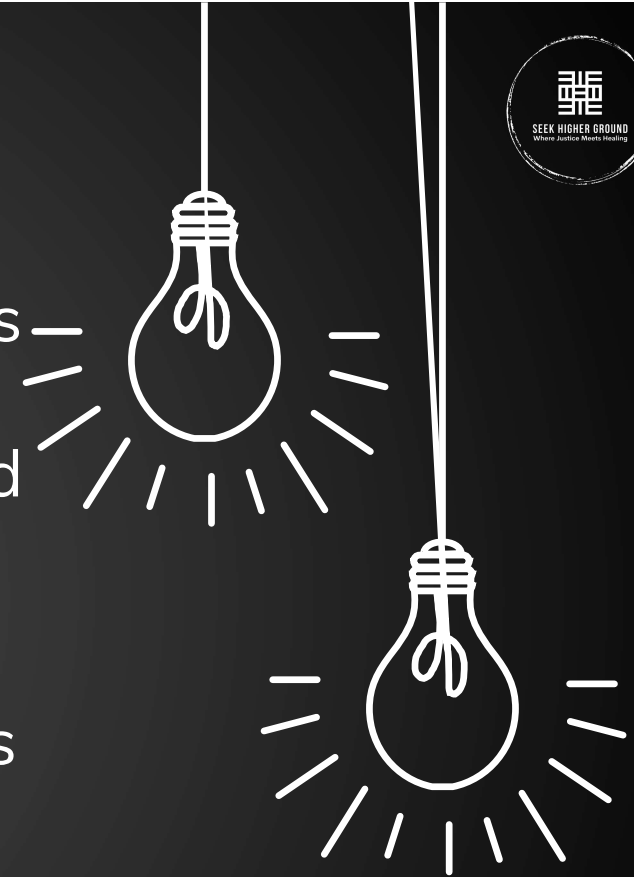
Grounding Information: Mission & Vision

MISSION STATEMENT

The Children's Trust of Alachua County funds and supports a coordinated system of community services that allows all youth and their families to thrive.

VISION STATEMENT

Facilitate equitable access and opportunities for all children and families in Alachua County to ensure every child reaches their maximum potential.





Grounding Activity

The mission of the Children's Trust of Alachua County is to "fund and support a coordinated system of community services that allows all youth and their families to thrive." When you envision a system of supports for our children and youth in Alachua County that works effectively, what do you see?

Theory of Change

- 💡 Based on Assumptions
- 💡 It's an ongoing process not a destination
- 💡 It will be as flexible as you allow



Theory of Change-How we'll Get There

Current

Where are we now?

What does CTAC's mission look like in action?

Inputs

What resources & assets are available to work towards our goals?

Output

What are the key activities necessary to reach desired outcomes?

Outcomes

What are the intermediate or short-term outcomes we can benchmark our progress with?
What long-term outcomes are defined?

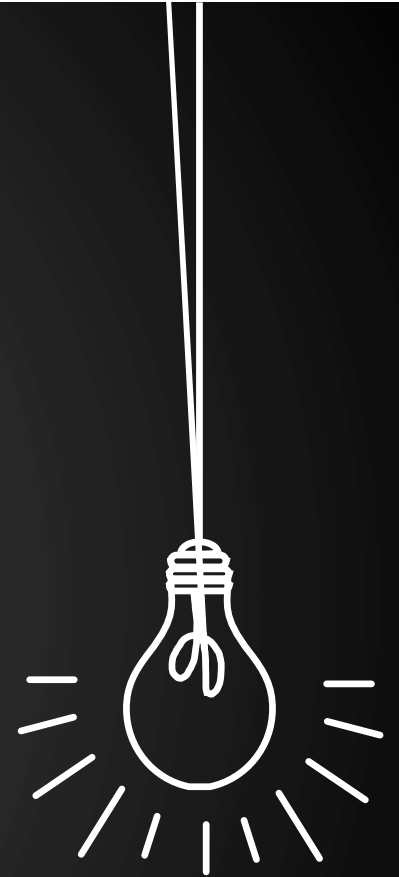
Impact

If we are successful, what will the community look like?



Rapid Cycle Process

1. Volunteer Scribe
(capture the wisdom)
2. Volunteer Timekeeper
(ensure each person participates & that the group has a moment to summarize)
3. Hyper-focused 15 min Discussion
(prompt will be in the chat)
4. 2 Min Report Out



Next Session

Feb 23, 23
1-5pm





CHILDREN'S TRUST
OF ALACHUA COUNTY

GOALS AND INDICATORS





	Alachua County Previous Value (Yr.)	Alachua County Most Recent Value (Yr.)	Change Between Years	State of Florida Most Recent Value
ALL CHILDREN ARE BORN HEALTHY AND REMAIN HEALTHY				
Low Birth Weight <i>Live Births Under 2500 Grams</i>	10.3% (2020) 18.0% of black births	10.4% (2021) 20.2% of black births	↗	9.0% (2021) 14.4% of black births
Hospitalizations for Self-Inflicted Injuries <i>Ages 12-18</i>	149 (2019) <i>rate per 100,000</i>	142 (2020) <i>rate per 100,000</i>	↘	71 (2020) <i>rate per 100,000</i>
Bacterial STDs <i>Ages 14-19</i>	3,569 (2019) <i>rate per 100,000</i> (6,334 for black teens)	3,520 (2020) <i>rate per 100,000</i> (7,362 for black teens)	↘	2,416 (2020) <i>rate per 100,000</i> (3,852 for black teens)
Child Food Insecurity Rate	19.9% (2020)	18.5% (2021)	↘	19.1% (2021)
ALL CHILDREN LEARN WHAT THEY NEED TO BE SUCCESSFUL				
Children are Ready for Kindergarten <i>Florida Kindergarten Readiness Screener (FLKRS)</i>	58.4% (2020) 44.2% of black students	54.8% (2021) 35.4% of black students	↘	50.0% (2021) 39.5% of black students
3rd Grade Reading Proficiency <i>Florida Standards Assessment (FSA) English Language Arts</i>	56.6% (2019) 31.8% of black students	52.5% (2021) 29.4% of black students	↘	54.4% (2021) 36.7% of black students
8th Grade Reading Proficiency <i>Florida Standards Assessment (FSA) English Language Arts</i>	60.7% (2019) 31.2% of black students	57.8% (2021) 31.9% of black students	↘	52.4% (2021) 36.0% of black students
High School Graduation Rates	90.4% (2020) 84.1% for black youth	86.6% (2021) 82.5% for black youth	↘	90.1% (2021) 87.1% for black youth
ALL CHILDREN HAVE NURTURING, SUPPORTIVE CAREGIVERS AND RELATIONSHIPS				
Child Maltreatment Victims	3,666 (2020) 48.4% black children	3,535 (2021) 46.6% black children	↘	856,642 (2021) 30.7% black children
Youth Arrested	383 (2020) 301 (79%) black youth	311 (2021) 246 (79%) black youth	↘	19,086 (2021) 8,792 (46%) black youth
Children in Out-of-Home Care <i>Ages 0-17</i>	278 (2020) 47.1% black children	292 (2021) 57.2% black children	↗	22,488 (2020) 28.7% black children
ALL CHILDREN LIVE IN A SAFE COMMUNITY				
Social Vulnerability Index	22nd percentile in overall vulnerability (2016)	24th percentile in overall vulnerability (2018)	↗	<i>unavailable</i>
Child Maltreatment Findings for Inadequate Supervision	425 (2019)	390 (2020)	↘	27,661 (2020)
Violent Crimes	662 (2019) <i>rate per 100,000</i>	749 (2020) <i>rate per 100,000</i>	↗	383 (2020) <i>rate per 100,000</i>
Hospitalizations for Unintentional Non-Fatal Injuries <i>Ages 0-14</i>	125 (2019)	122 (2020)	↘	4,790 (2020)

Updated on 4/21/2022

Our Pathway to Improve Child Outcomes

Fiscal Year 2022 (10/1/2021 -9/30/2022)

Children's Trust of Alachua County

Primary Participants Served -> Program	Strategy	Goal
772 pregnant women -> Family Partner	▶ Support Maternal & Child Health	▶ Children are born healthy & remain healthy. 
736 families with newborns -> NewboRN		
16 adolescent girls -> Pace Reach	▶ Support Mental Health & Substance Abuse Prevention	
428 adolescent youth -> PALS		
282 children -> Wellness Coordinator	▶ Support Physical Health	
	Improve Food Security	
56 teachers -> TPD Professional Development	▶ Support Professional Development & Capacity Building	▶ Children learn what they need to be successful. 
16 owners / directors -> V'Locity Master Class		
6 owners / directors -> Accreditation Academy		
9 programs -> Capacity Building Collaborative		
340 children -> Afterschool	▶ Expand Access to High Quality Childcare, Afterschool, & Summer Programs	
1,156 children -> Summer		
2,050 children -> Enrichment Services		
594 children -> Imagination Library	▶ Support Literacy & Other Academic Supports	
69 children -> Bridge Literacy Program		
781 children -> Operation Full STEAM		
35 -> Freedom Schools		
	Support Special Needs	
143 children -> New Tech Now	▶ Support Career Exploration & Preparation	
220 children -> TeensWork Alachua		
9 children -> Help Me Grow	▶ Support Initiatives that Connect Families to Resources	▶ Children have nurturing & supportive caregivers & relationships. 
3,288 parents -> Family Resource Centers		
25 parents -> Project YouthBuild Parenting Program	▶ Improve Family Strengthening & Supports	
	Support Injury Prevention	▶ Children live in a safe community. 
40 children -> Big Brothers, Big Sisters	▶ Support Initiatives that Prevent Delinquency / Truancy	
180 children -> Midnight Basketball 7,344 children -> Peaceful Paths Prevention Program	▶ Support Violence Prevention Initiatives	