

Howard Bishop Middle School Community Partnership School

Presented By:

Rebecca Couch, Area Director CPS

LaToya Jennings Lopez, Director HBMS CPS



What is a Community School?

A Community School is both a physical place as well as a set of partnerships between a school and other community resources.

- Coalition for Community Schools



The Challenge ...

How does a Community Partnership School bridge the achievement gap?

Barriers to student success weigh down

under-performing schools such as:

- Hunger
- Homelessness
- Poverty
- Exposure to violence
- Mental health struggles
- Inadequate access to health care and more



The Solution ...

The four partners and pillars form a collaborative infrastructure to eliminate barriers and bridge a foundation for success!



Expanded Learning



Wellness Supports



Family & Community
Engagement



Collaborative Leadership

By addressing barriers to learning - poverty, food insecurity, homelessness and others - community partnership schools bring together high-quality academic supports, healthcare, counseling, mentoring and more - right at the school. The model helps to provide the learning environments that offer equitable opportunities and success for all students.

Howard Bishop CPS State funded Budget

- It costs approximately \$325,000 to effectively run a CPS with a full staff and programs. Historically, HBMS has received \$255,000 and raised additional funds for programming but could not fund the Wellness Coordinator position. There is a required 25% match.
- This year is the first year we have received a 10% step down in funding from the state. Our funding will continue to decline each year until we have been reduced to 60% of the original level of

School Name	FY 2021-2022	FY 2022-2023	FY 2023-2024	FY 2024-2025
Howard Bishop Middle School (year 5)	\$229,500	\$206,550	\$185,895	\$167,306

The Four Pillars of Community Schools



Expanded Learning

Academic support and enrichment that takes place before and after school, during weekends and summer, to augment traditional learning during the school day.

Examples: Tutoring, Mentoring, Enrichment activities. Since 2018, the CAPP grant has assisted us in funding tutoring, FSA Boot Camp, a portion of behavior health



The Four Pillars of Community Schools

Family & Community Engagement



Bringing families and the community into the school as partners in student's success. Making the school a neighborhood center to provides adult enrichment.

Examples: Family Resourcing, Workshops, Volunteerism, Special Events. Dr. Karen Cole Smith who serves on our Community Leadership Council has been instrumental in helping us implement an initiative called Educating Parents In Technology where Alachua County families are provided technical support with district platforms.



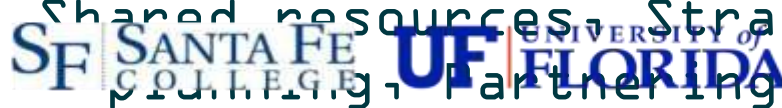
The Four Pillars of Community Schools



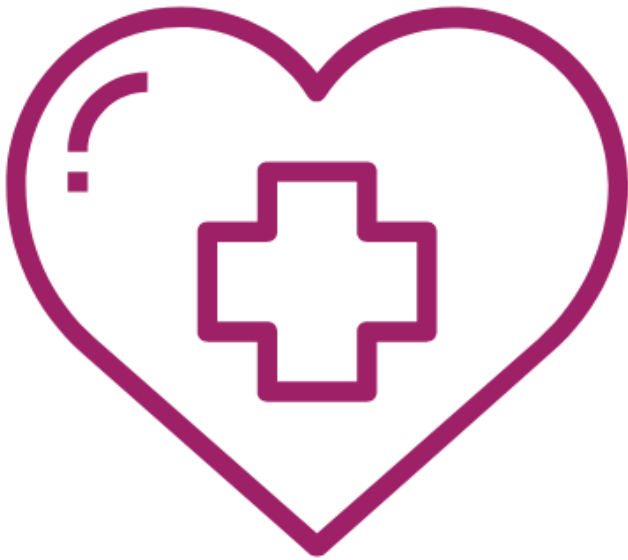
Collaborative Leadership

A culture of shared governance and collective decision-making toward a unified vision to identify needs and provide resources in the school and community. We have a 25 year MOU with partners!

Examples: Shared governance model, Shared resources, Strategic Partnering in operations.



The Four Pillars of Community Schools



Wellness Supports

Ensure all students regardless of the ability to pay, have access to a range of health and social services that are provided on the school campus in order to prevent substantial loss to instructional time.

Examples: Counseling, Medical & Dental Healthcare, Hygiene and Nutrition.



Wellness Coordinator (funded by CTAC)

Wellness Coordinator (Fully funded by CTAC \$49,005)

- Needed to increase health and medical awareness for students, parents, and the community.
- Advocate and connect proactive medical health, dental, vision, nutrition, and mental health awareness and wellbeing for children and families in our community.
- Help educate and coordinate various wellness support and services to students and families and help provide a better understanding of the importance of pro-active health attention (CTAC match funding will provide \$8,000 for Wellness coordinated community events).
- We would also be able to meet the certification criteria of standard 4.1 and all of standard 7. This helps us maintain the state funding currently received.

CTAC Performance Measures

Quantity: How Much?	FY21 Target
# of vision referrals.	100
# of primary health referrals for students.	40
# of behavioral health referrals for students.	40
# of dental referrals for dental services.	50
# of flu mist consents obtained	120
# of student support meetings	4
# of family and community engagement meetings	4
# of wellness events	3
Quality/Effort: How well are services provided?	FY21 Target
% of families reported satisfaction with referral and service process.	80%
% of guardian consents on file to provide wellness/behavioral health service to students.	85%
% of participants that were satisfied with wellness events	80%
% of participants that were satisfied with student support meeting	TBD
% of participants that were satisfied with family and community engagement	TBD
Client Benefits: Is anyone better off	
% of students referred that received services for vision.	75%
% of students referred that received services for behavioral health	50%
% of students referred that received dental services.	75%
% of consented students that received flu mist/ vaccine.	80%
% of students referred that received primary health services.	80%

How We Do *Good*

What makes a Community Partnership School so Unique?

School District

- Fully committed Superintendent
- Fully committed Principal
- Facility use
- Office space
- Data sharing agreement



Alachua County Public Schools has provided us with an annual commitment of \$145,600 in kind space.



How We Do Good

What makes a Community Partnership School so Unique?

Non-Profit, Community-Based Provider

- Has connections to school, businesses, organizations, community and residents
- Willing to become coordinating entity



CHS provides financial, legislative and administrative support. From 2016-2017 CHS funded the planning to start the model.

CHS also provide Behavior Health Counselor to HBMS.



How We Do *Good*

What makes a Community Partnership School so Unique?

University or College

- Present in school's community
- Connects institution's resources with identified school and community needs

For example, Dr. Lori Dassa from the UF College of Education who serves on our cabinet has been instrumental in providing us interns for our expanded learning programs. Santa Fe College has provided us with support for our student leadership council through internships.



How We Do *Good*

What makes a Community Partnership School so Unique?

Healthcare Provider

- Community-based
- Available comprehensive medical services (on-site, telehealth, linked)

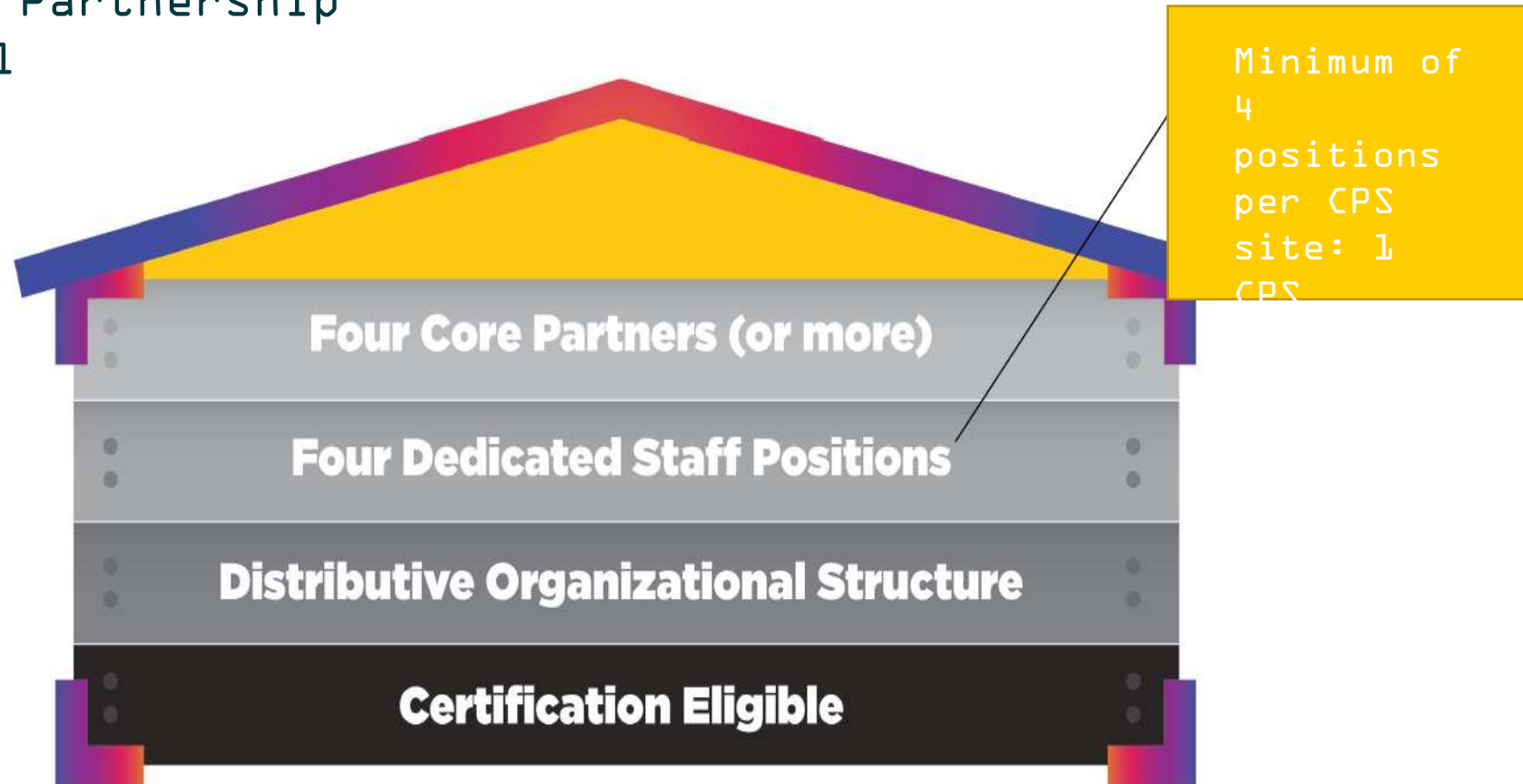


The Alachua County Department of Health is our partner and they provide us with a full time school nurse (\$57,949 in-kind) and they serve on our cabinet.



Four Model Components

The Community Partnership
Schools™ Model



UCF Certification Process



Year 3: Readiness Assessment

Year 5: Certification Assessment (October 2022)

- Facilitate a self-assessment by the community school leadership team
- Conduct on-site observations and interviews of stakeholders
- Identify and present on strengths and opportunities for growth
- Provide a final report on its findings

Scoring

- Fundamental practices must be in place at an “Implementing” (2) level for a Community Partnership School to be considered eligible for certification.
- Must achieve at least 50% score for each standard to become certified (160 standards).



UCF-Certified Community Partnership Schools

Standards 3.0

Standard 1	Partnership
Standard 2	Governance
Standard 3	Foundation
Standard 4	Staffing
Standard 5	Integrated Community Partnership School Framework
Standard 6	After-school Programs and Services
Standard 7	Comprehensive Wellness Services
Standard 8	Family and Community Engagement
Standard 9	Volunteering
Standard 10	University Assistance
Standard 11	Evaluation
Standard 12	Sustainability

Standards define framework elements and best practices for the Community Partnership Schools model.



Thank you!

For additional information on Community Partnership Schools and Children's Home Society of Florida, visit

chsfl.org/communitypartnershipschools

Or Contact

Rebecca Couch- Area Director of NE CPS, Rebecca.couch@chsfl.org

LaToya Jennings Lopez- Director HBMS CPS,

LaToya.JenningsLopez@chsfl.org