

Children's Home Society of Florida



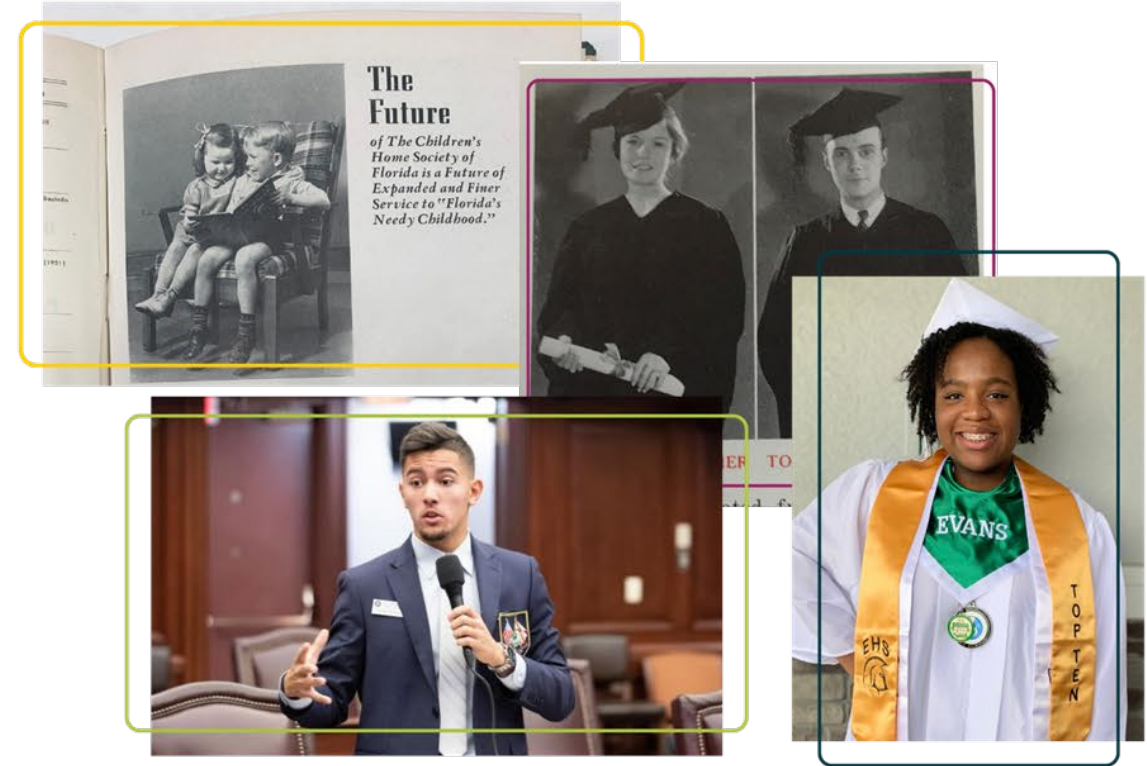
Celebrating 12 Years of inspiring GOOD

1 Who is CHS?

Florida's leading, largest and oldest statewide nonprofit serving children and families.

When children and families face hard situations, we empower them to find—and pursue—opportunities for success and happiness.

CHS serves more than 80,000 children and families throughout the state each year.



Early Childhood Services

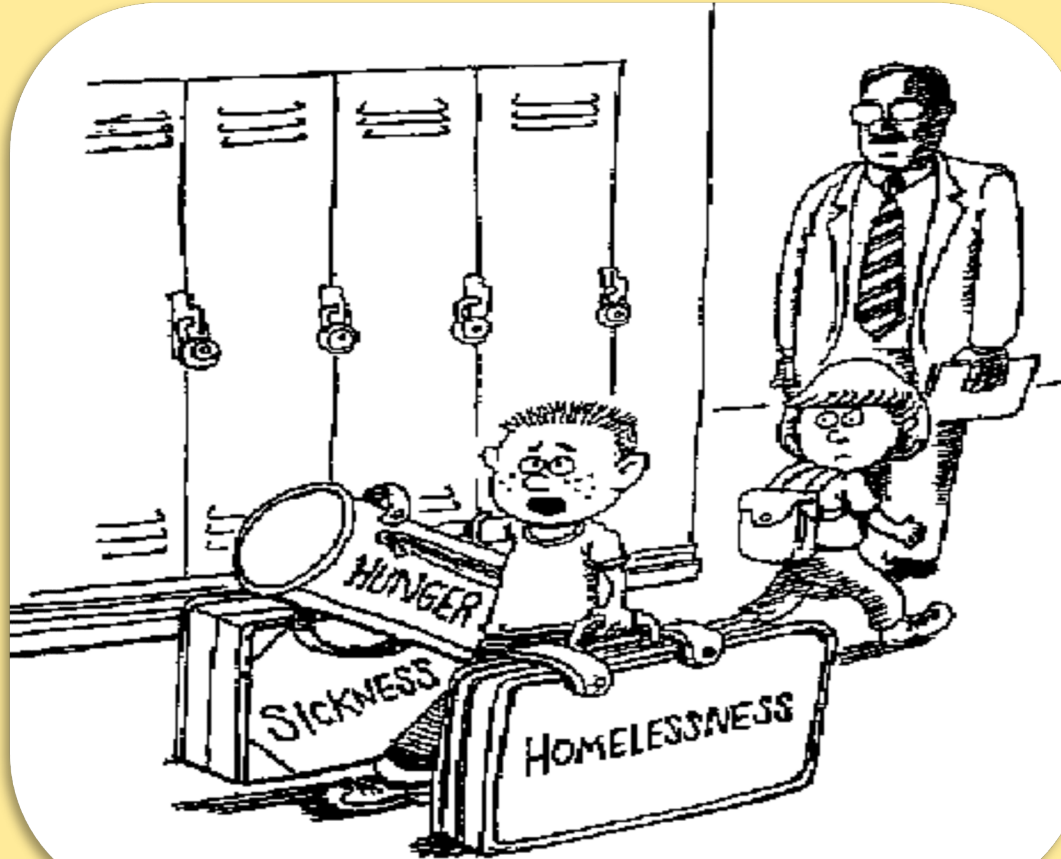
Counseling & Mental Health Services

Child Welfare

Mentoring, Outreach & Job Training

Community Partnership Schools

The Challenge . . .



Why does this matter?

Over 90% of students attending Florida's 44 schools – 31 of which CHS provides leadership as a core partner – are economically disadvantaged



In May 2020, there was an increase of 2.5 million children living in poverty as a result of COVID-19.



Children who grow up in poverty are five times more likely to drop out of high school. Today, nearly 80 percent of the prison population are high school dropouts.



21 percent of low-income children and youth aged 6 to 17 have mental health challenges. Children at risk for mental health challenges in first grade face a 5% drop in academic performance in just two years.



Students with toothaches are almost 4 times more likely to have a low-grade point average.

The Solution: Community Schools



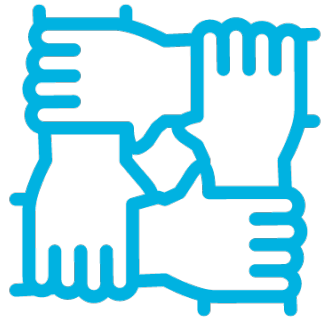
Conventional school



Community School

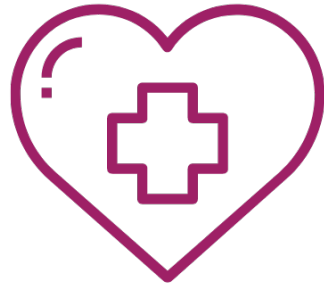
The Four Pillars of Community Schools

How does a Community Partnership School bridge the achievement gap?



Collaborative Leadership

Committed partnership, Collective vision, Shared decision making, Leveraged Resources, Community Collaboration



Wellness Supports

Medical, Dental, Vision, Behavioral, Nutrition, Hygiene



Family & Community Engagement

Needs Assessment, Leadership & Volunteerism, Workshops & Resourcing, Education & Workforce Development



Expanded Learning

Tutoring, Enrichment, Teacher Development & Supports

What is a Community Partnership School?

Why is it so unique?

Community School model uses a multiple core-partner approach to help close the achievement gap for students and families to succeed in school and in life

Long-term partnership with the school district, a college or university, a health care provider, and a reputable nonprofit organization

Certification process ensures quality programming, framework and continuous improvement

Community needs assessment & councils empowers students, teachers, parents and community members to identify their primary needs and challenges -- the results of which determine the services and solutions to bring into the school

CHS' unique role convenes partners and key players, and leads community collaboration to bring resources and opportunities to students and families

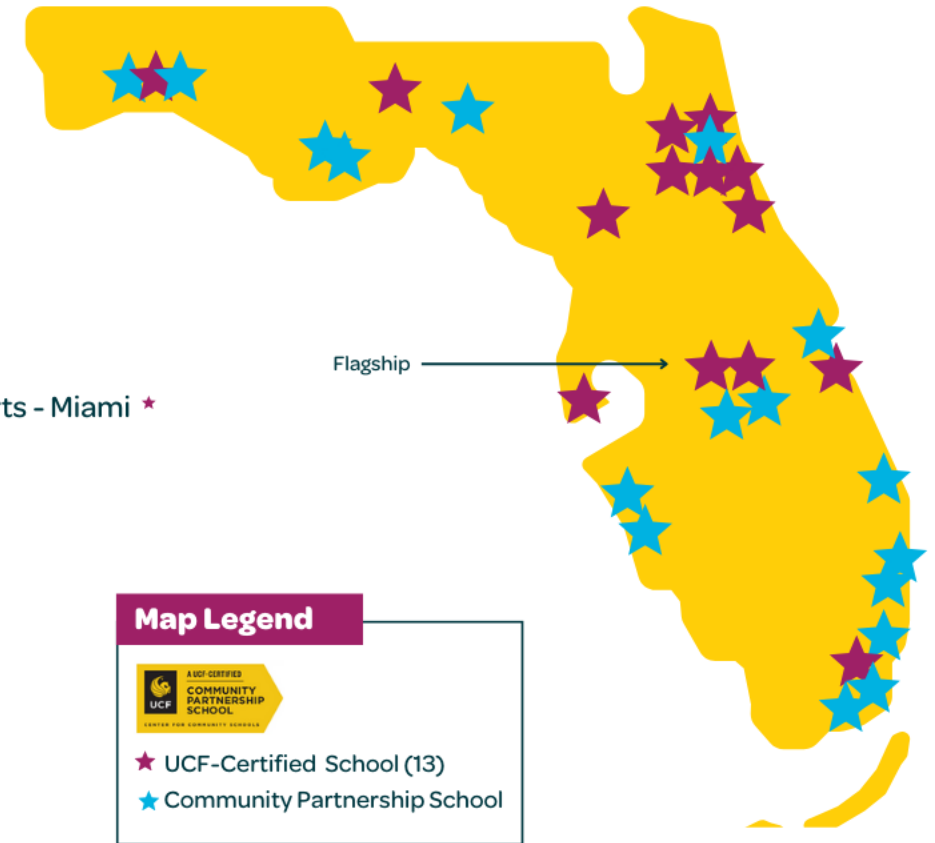


Where are we today?

Children's Home Society of Florida serves more than 30,000 students in 31 Community Partnership Schools from Panama City to Miami

- Evans High School (Flagship) - Orlando *
- Endeavour Elementary - Cocoa *
- C.A. Weis Elementary - Pensacola *
- Mort Elementary - Tampa *
- Edward H. White High School - Jacksonville *
- Howard Bishop Middle School - Gainesville *
- South Woods Elementary - Elkton *
- The Webster School - St. Augustine *
- OCPS Academic Center for Excellence (ACE) K-8 - Orlando *
- Wilkinson Junior High School - Middleburg *
- Sabal Palm Elementary - Tallahassee *
- Keystone Heights Jr/Sr High - Keystone Heights *
- Orange Park High School - Orange Park
- Dodgertown Elementary - Vero Beach
- Miami Southridge Sr. High - Miami
- Manatee Elementary - Bradenton

- Eccleston Elementary - Orlando
- Jones High School - Orlando
- Homestead Middle School - Miami
- Arthur & Polly Mays Conservatory of the Arts - Miami *
- Parker Elementary - Panama City
- Daughtrey Elementary - Bradenton
- Jefferson County K-12 - Monticello
- Pine Forest High School - Pensacola
- Caribbean K-8 Center - Miami
- Lake Worth High School - Lake Worth
- JFK Middle School - Riviera Beach
- Bellview Middle School - Pensacola
- Campbell Middle School - Daytona
- Longbranch Elementary - Jacksonville
- Ruthorford High School - Panama City



CHS is a core partner in 31 of 44 schools throughout Florida -- more than any other entity in the state.

Funding & Sustainability

Distributive Funding Support

Community Partnership Schools are written in Florida's state statute at \$11 million annually through the Department of Education and is distributed through a grant program by UCF that provides seed funding to 44 schools.

- Florida legislative funding was established to support the launch, expansion and capacity building of new Community Partnership School initiatives across the state. Funding is based on school type & geography.
- Core partners work collaboratively to leverage existing and new resources (contributions, sponsorships and in-kind services) to ensure Community Partnership School's long-term sustainability.

CHS Programs Funded by FACCT	
Children's Trust of Alachua County	Howard Bishop
Miami Children's Trust	Healthy Families
Miami Children's Trust	Family Preservation
Escambia Children's Trust	Weis CPS
Escambia Children's Trust	Pine Forest CPS
Manatee County Children's Services	Manatee CPS
Children's Services Council of Palm Beach County	Bridges
Children's Services Council of Palm Beach County	Teen Outreach Program
Children's Services Council of St Lucie County	Teen Life Choices
Children's Services Advisory County of Indian River	Teen Life Choices
Children's Services Council of Okeechobee County	WaveCREST
Children's Services Council of Broward County	Family Visitation
The Kid's Hope Alliance	Healthy Families
Children's Board of Hillsborough County	Mort CPS

HBMS Wellness Coordinator



THE NEST
HOWARD BISHOP MIDDLE SCHOOL,
A COMMUNITY PARTNERSHIP SCHOOL

- Wellness Support Coordinator: facilitates, coordinates and tracks the school health care program referral network and processes
- Howard Bishop Middle School Wellness Support Coordinator is currently funded by the Children's Trust of Alachua County
- One Wellness Coordinator has served 781 kids and counting with medical needs at Howard Bishop and in the community



HBMS Wellness Clinics



THE NEST
HOWARD BISHOP MIDDLE SCHOOL,
A COMMUNITY PARTNERSHIP SCHOOL

Wellness Services	Howard Bishop CPS 2021-2022 October-September 30 No Wellness Coordinator	Howard Bishop CPS 2022-23 October-September Wellness Coordinator	Howard Bishop CPS 2023-Current October-September Wellness Coordinator
UF Health Dental Clinics	42	100	TBD
Flu mist	37	97	93
Saving Smiles	0	75	TBD
Optical Outlet and FL Hyken	19	163	3 served
Behavioral Health	45	65	13
Restorative Practice Session	0	6 (28 kids)	3(15 Kids)
Primary Care	0	148	87



Recognition of Sustainability



THE NEST
HOWARD BISHOP MIDDLE SCHOOL,
A COMMUNITY PARTNERSHIP SCHOOL

- Acknowledgement of Children's Trust of Alachua County
 - Acknowledgement of Wellness Coordinator





THE NEST
HOWARD BISHOP MIDDLE SCHOOL,
A COMMUNITY PARTNERSHIP SCHOOL

Thank you!

