



CHILDREN'S TRUST
OF ALACHUA COUNTY

Children's Services Advisory Board

- ❑ Ensuring that every baby is a healthy baby.
- ❑ Ensuring that all parents have the resources they need to prevent child abuse and neglect before it starts.
- ❑ Ensuring that all families have access to affordable, high quality and developmentally appropriate early learning and care.
- ❑ Ensuring that all children enter kindergarten ready to learn and to succeed.

Universal Nurse Home Visiting Program



NewboRN
Home Visiting

Collaborative Partners:

Alachua County, Florida

Florida Healthy Start

UFHealth UNIVERSITY OF FLORIDA HEALTH

UFHealth SHARON HORVATH

FLORIDA SCHOOL OF TRADITIONAL MIDWIFERY

NORTH FLORIDA REGIONAL MEDICAL CENTER NORTH FLORIDA REGIONAL HEALTHCARE

NEW BEGINNINGS

NURSECORE™ the heart of healthcare

Funded by the Alachua County Board of County Commissioners as recommended by the Children's Services Advisory Board.

Transformational Professional Development

CHILD



Center for Early Learning

UF Anita Zucker Center for Excellence
in Early Childhood Studies
UNIVERSITY of FLORIDA



Healthy Social and Emotional Development Program



Voters Pass the Children's Trust of Alachua County in November 2018

Approximately \$7.1 million for children's services

Provides sustainable funding for the three initiatives

LOCAL & STATE

STATE CONSTITUTION AMENDMENTS

Unofficial election night results

All parents required to pass

Increase homestead property tax exemption

Yes: 51%

Yes: 47%

Constitutions are properly the

Yes: 51%

Yes: 51%

Other method of spending

Yes: 72%

Yes: 23%

Writing resolutions for future

Yes: 44%

Yes: 31%

Supersede required for state laws and fees

Yes: 51%

Yes: 31%

Rights of other citizens, judges

Yes: 52%

Yes: 31%

Sanction lawsuits for families of first responders, military, public colleges and universities

Yes: 51%

Yes: 31%

Prohibit off-shore drilling, prohibit mining in marshlands

Yes: 61%

Yes: 31%

State and local government structure and operations

Voters support kids



Supporters of the Children's Trust of Alachua County meet at a voting members and in an Election Day during a rally party at the Hill restaurant in Gainesville on Tuesday.

Alachua County residents back Children's Trust plan

By David Sautter

created by the half-mill tax. A mill represents \$1 in tax for each \$1,000 of assessed property value. It's estimated the proposal would cost typical homeowners less than \$3 a month.

the ballot from, while about 98 percent voted no.

The ballot then voters saw on Tuesday read: "In order to provide developmental, preventive and supportive services for children, such as

Clemons squeaks through in House District 21

By Andrew Caplan

Republican Chuck Clemons narrowly defeated his rival in the state House Tuesday in a close margin over Democrat James Hamilton.

Clemons, a Newberry, earned 51.6 percent of the district vote, taking House and Clemons' race by a large margin. The district also represents southern Alachua County.

"I'm honored," Clemons said. "We had a very hard-fought campaign... I'm just thankful that I'll get to go back to Tallahassee and represent the home and represent our community."

In Alachua County, Clemons took a strong lead, winning 59 percent of the vote. However, Clemons made that up in Dixie and Gilchrist counties.

Clemons received 84 percent in Dixie County, earning more than 4,000 votes. In Gilchrist, he also got 84 percent of the vote, with more than 3,000 votes.



CITIZENS FOR CHILDREN'S TRUST OF ALACHUA COUNTY

Leadership

Statutory Members	Name
Superintendent of Schools	Dr. Carlee Simon
School Board Member	Tina Certain
District Administrator from DCF or designee	Cheryl Twombly
Member of county governing body	Commissioner Ken Cornell
Juvenile Judge	Hon. Susanne Wilson Bullard

Appointed Members	Term
Dr. Karen Cole-Smith	1/1/2021*
Lee Pinkoson	1/1/2022
Dr. Patricia Snyder	1/1/2023
Dr. Maggie Labarta	1/1/2023
Dr. Nancy Hardt	1/1/2024

Mission, Vision, and Guiding Principles

Mission Statement

The Children's Trust of Alachua County funds and supports a coordinated system of community services that allows all youth and their families to thrive.

Vision Statement

Facilitate equitable access and opportunities for all children and families in Alachua County to ensure every child reaches their maximum potential.

**1) RESULT:
All children
are born
healthy and
remain
healthy.**

Turn the Curve Indicator 1

Indicator	Rationale	Data Source	Most Recent Value
Infant mortality rate per 1,000 live births	Proxy for health care access and health equity	FL Health Charts	10 per 1,000 births
Hospitalizations for self-inflicted injuries ages 12-18	Proxy for mental health access and services	FL Health Charts	170 per 100,000
Bacterial STDs 14-19	Proxy for youth development access and health	FL Health Charts	3,667 per 100,000
Child Food Insecurity rate	Proxy for family stabilization	FL Health Charts	20% of children

Turn the Curve Indicator 2

**2) RESULT:
All children
can learn
what they
need to be
successful.**

Indicator	Rationale	Data Source	Most Recent Value
Children ready for kindergarten	Proxy for education quality and access	Florida Department of Education	57% of kindergarteners
3 rd Grade reading levels	Proxy for education quality and access	Florida Department of Education	31% for black youth
High School Graduation rates	Proxy for education quality and access	Florida Department of Education	80% for black youth

**3) RESULT:
All children
have
nurturing,
supportive
caregivers and
relationships.**

Turn the Curve Indicator 3

Indicator	Rationale	Data Source	Most Recent Value
Children subject to Maltreatment	Proxy for safety and supportive relationships	Fostering Court Improvement	County ranked 28 th of 67 counties
Youth Arrests	Proxy for youth development and availability of prevention services	FL Health Charts	238 per 10,000 youth
Children in foster care	Proxy for family stability	FL Health Charts	503 per 100,000

**4) RESULT:
All children
live in a safe
community.**

Turn the Curve Indicator 4

Indicator	Rationale	Data Source	Most Recent Value
Households with severe housing problems	Proxy for basic need access and family stability	FL Health Charts	20% of households
Violent crimes	Proxy for mental health and availability of prevention services	FL Health Charts	686 per 100,000 people
Child (ages 5-11) passengers injured or killed in motor vehicle accidents	Proxy for safety	FL Health Charts	893 per 100,000

Who is the CTAC Funding?

- ❑ Children - 15,516, with duplicates likely across programs
- ❑ Agencies - 43
- ❑ Programs - 47
- ❑ Total Awards - \$3 million
- ❑ Median Award - \$29,554
- ❑ Awards ranged from \$5,812 to \$439,228

Target Populations Currently Funded

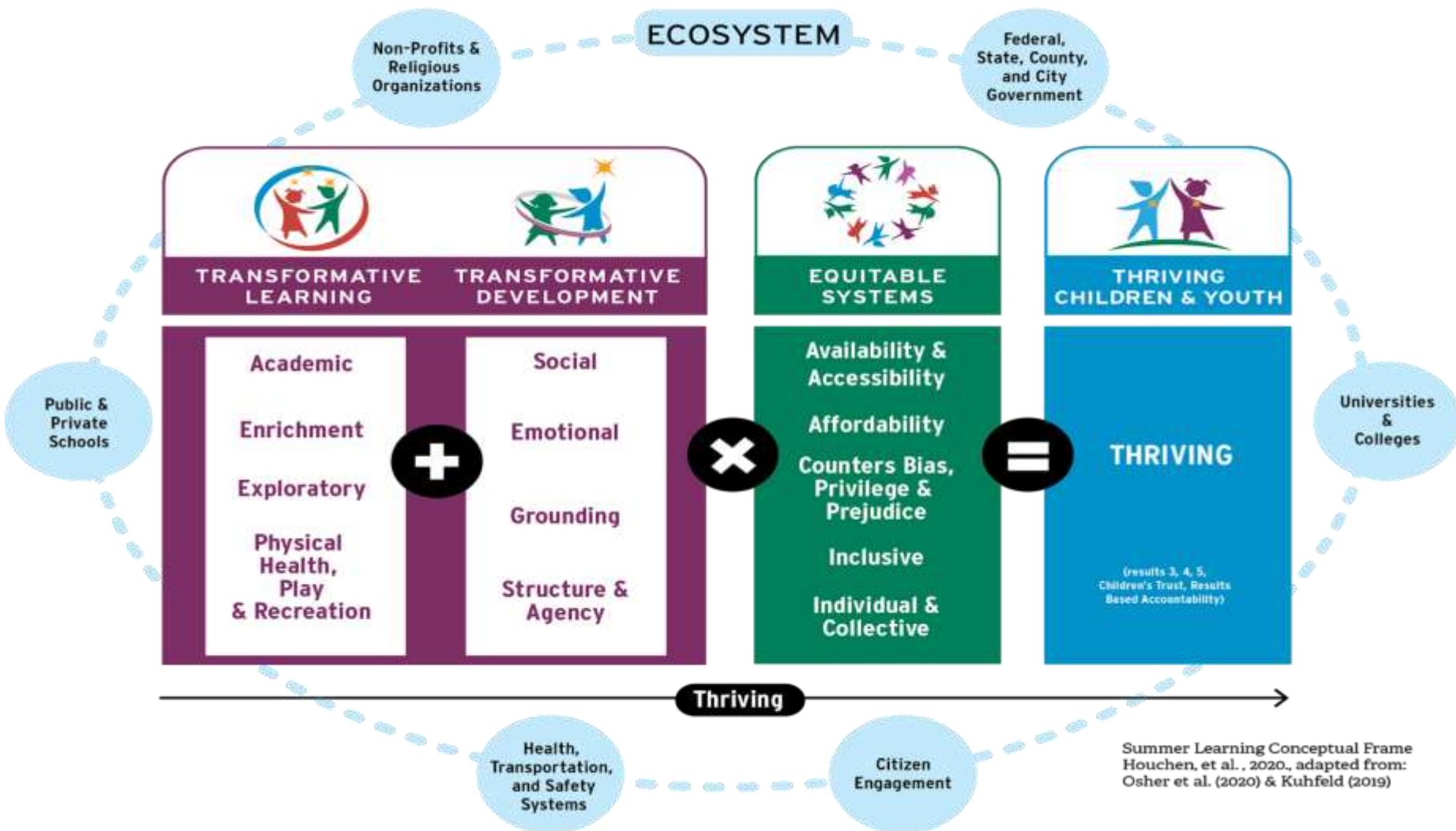
Based on demographics described in the scope of services, programs were categorized into target populations.

Target Populations	# of Programs	Total Award	Expected # of Children to be Served
All Ages	1	\$25,500	-
Early Childhood	3	\$1,193,864	5,128
School-Age: 6-18 yrs	18	\$840,242	2,322
School-Age: Elementary	8	\$289,286	3,530
School-Age: Elementary & Middle School	7	\$161,084	186
School-Age: Middle School	1	\$104,960	3,500
School-Age: Middle School & High School	8	\$306,652	890
School-Age: High School	1	\$96,874	50
Grand Total	47	\$3,018,462	15,516

Reporting to the BoCC

Report	Frequency	Due Date
Proposed Millage and Tentative Budget	Yearly	July 1st
Adopted Budget and Final Millage Rate	Yearly	As soon as possible in accordance with FS Chapter 200
Annual Report	Yearly	January 1
Quarterly Financials: Expenditures, Receipts, Cash on Hand, & Total Administrative Costs	Quarterly	January, April, July, September

The Future



Summer Learning Conceptual Frame
 Houchen, et al., 2020., adapted from:
 Osher et al. (2020) & Kuhfeld (2019)