



CHILDREN'S TRUST
OF ALACHUA COUNTY

Early Learning Network Update



Quality Improvement System Next Steps

Research

- Gather data from all sources and domains
- Utilize the listening tour findings and completed strategic plan
- Utilize the local and state findings from the Future Project listening tour and other local assessments
- System Map review

Convene

- Identify a local expert to help develop model
- Create comprehensive funding strategy and subsidy rate cost estimation tools
- Host workgroup meetings

Launch

- Share model and strategy
- Build public awareness and common language
- Continued community conversations and Annual community summit
- Determine what to fund

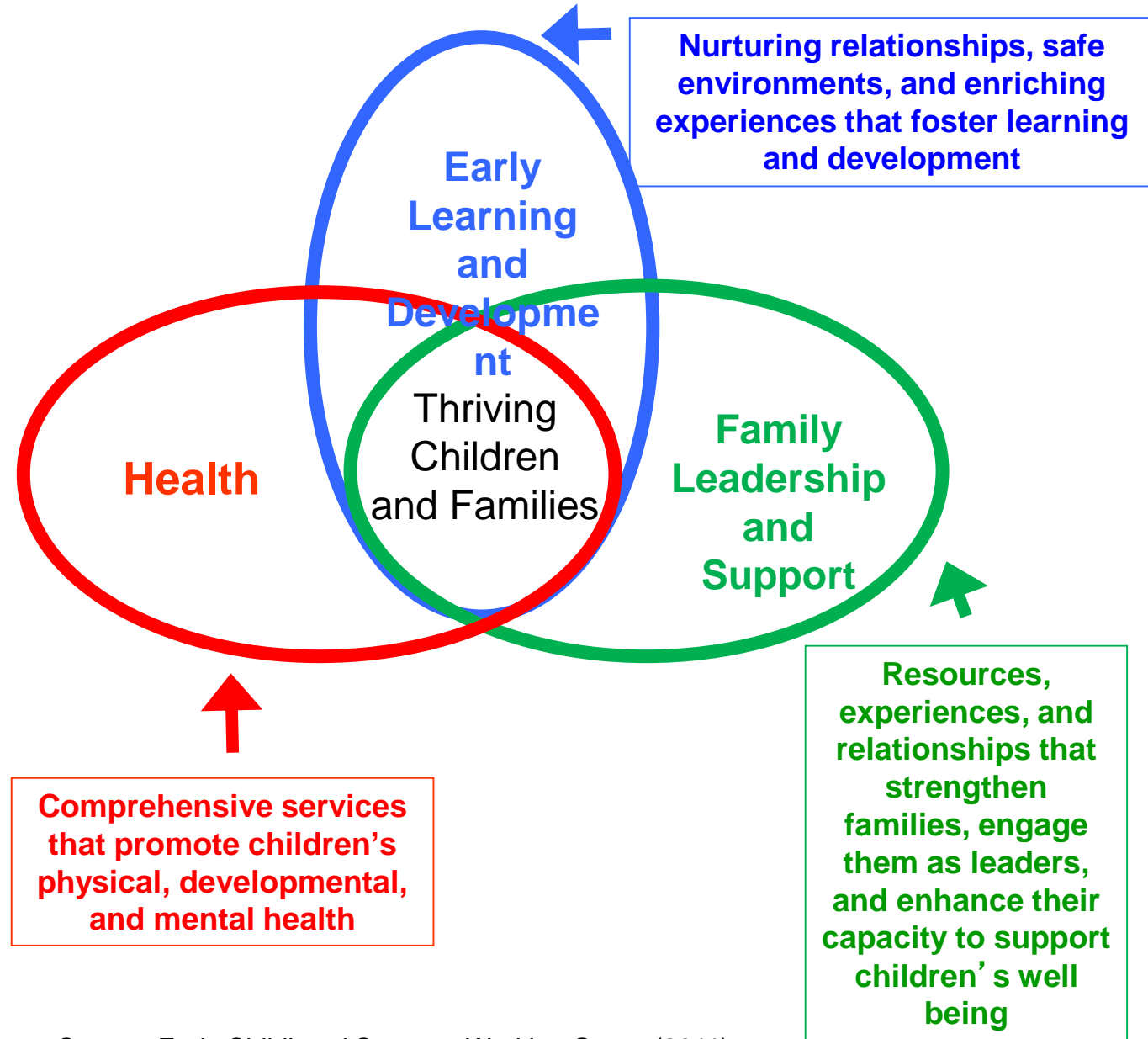
Current Supports

The Children's Trust of Alachua County invest funds that support children's development from birth to age 5 with a goal of ensuring families have what they need for healthy development and children are ready to learn when they arrive at kindergarten.

Health (Early Intervention)	Help Me Grow Alachua
	Family Partner
	NewboRN Home Visiting
Early Learning and Development	Transformative Professional Development- Funding End June 30 th
	Business Leadership Institute for Early Learning Masterclass
	Accreditation Academy
Early Literacy	Gainesville Thrive
Family Leadership and Support	Project Youth Build Parenting Program
	Family Resource Center – Community Navigator

Early Childhood Learning Collaborative Call-To-Action

- ❑ Community Partner Anita Zucker Center and The Children's Movement.
- ❑ Held on June 13
- ❑ 25 Attended
- ❑ Purpose: Building an Equitable and Supported Early Childhood Education System in Alachua County.
- ❑ Invited: Families, Educators, Advocates, Government, Chamber, Businesses, Early Learning Organizations.



What supports do we imagine a quality early learning system needs?

Research

Childcare Workforce Study

Collaborative data collection and review

Early learning data system

Family Supports

Child-care subsidies for families who do not qualify for school readiness and are above 150% to 300% FPL

Therapeutic Parenting Support and Infant & Early

Childhood Mental Health Consultation

Family Leader Network

Expand Community Navigators

Short-term early intervention services

summer program for children with disabilities

Head Start Summer Bridge Program

Visible platform for services and family engagement

Temporary subsidy for contracted Partners

Educator Supports

Teacher Salary Supplements

High- Quality Performance Incentives and Tier payment differentials

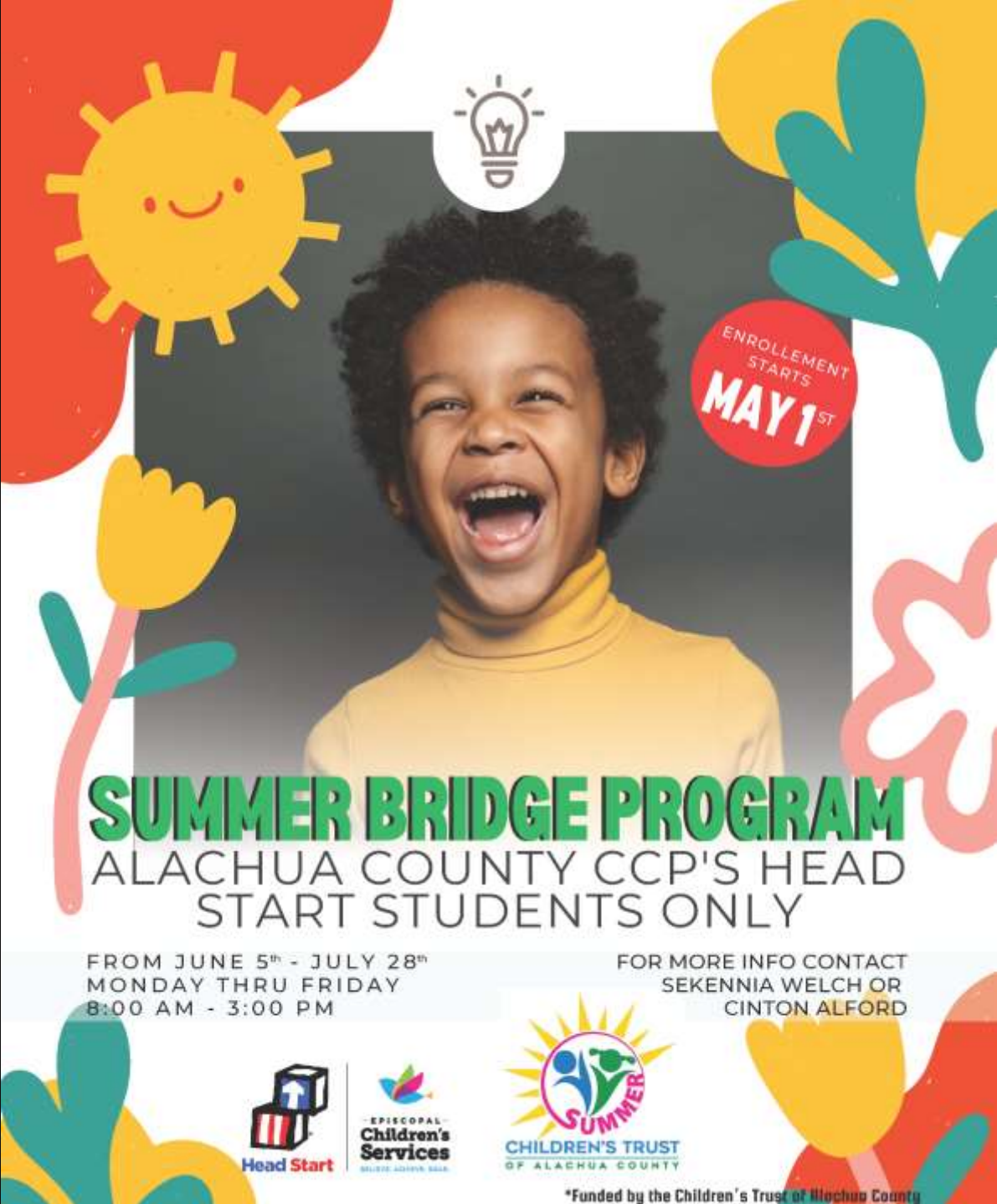
Accreditation Academy Incentives

socio-emotional development and challenging behaviors consultations

Teacher Scholarships

Head Start Summer Bridge

- ❑ Community Partner is Episcopal Children's Service Inc.
- ❑ Started June 5
- ❑ Length: 8 weeks
- ❑ 4 Early Learning Centers
- ❑ 59 Children ages 3, 4, and 5
- ❑ Located in High Springs, Newberry, Archer, and Gainesville






ENROLLEMENT STARTS **MAY 1ST**

SUMMER BRIDGE PROGRAM

ALACHUA COUNTY CCP'S HEAD START STUDENTS ONLY

FROM JUNE 5th - JULY 28th
MONDAY THRU FRIDAY
8:00 AM - 3:00 PM

FOR MORE INFO CONTACT
SEKENNIA WELCH OR
CINTON ALFORD

*Funded by the Children's Trust of Alachua County



SUMMER SCHOOL 4 PARENTS & CHILD CARE PROFESSIONALS

FREE 6-Week Summer School Initiative

School is out but class is in session! Gainesville's first ever summer school for parents and professionals of children 0-5 years of age. Discover the emotional needs hidden beneath behaviors. When you meet the needs, you change behaviors. Build relational skills necessary for regulation and cognitive development tomorrow!



WHEN:

5-Weeks

Each Friday starting

Friday, July 7, 2023

6:00 pm – 8:00 pm

Friday, August 4, 2023

Virtual

LIVE via ZOOM

Register:

info.genesisfec@gmail.com

The first 25 registrants will receive a copy of the book, "Someone to be with" by Deldre Quinlan

PH: (352) 219-1620

www.genesis31.com

Summer School 4 Parents & Professionals

- Socio-Emotional Development
- Community Partner is Genesis Family Enrichment Center
- Intervention is Circle of Security Parenting and Circle of Security Classroom
- ICAET Accredited. Professionals can receive CEU
- Started July 7
- Combined training classroom
- 1:1 consultation for families in person.
- Small group professional development sessions.