



# Community Foundation of North Central Florida

Lesley Banis, CFRE

Vice President Community Engagement

# Measuring What Matters

Our commitment to community indicators is driven by a fundamental need to understand and demonstrate the impact of collective efforts.

## Data-Driven Decisions

Empowering thought leaders and decision-makers to make informed, strategic choices for maximum community benefit.

## Assess Philanthropic ROI

Quantifying the effectiveness of investments, ensuring resources are directed where they can "move the needle" most effectively.

## Track Long-Term Progress

Providing a consistent framework to monitor change and impact over time, allowing us to adapt and improve our strategies.

This comprehensive approach will allow us to track key community outcomes.

# Children's Trust Investment

1

**June 2024**  
**CTAC Funding \$15,000**

Initial funding to establish Community Indicators for Alachua County

2

**December 2024**  
**CTAC Funding \$15,000**

Outsourcing expertise to incorporate the Hub with the Indicators

3

**December 2025**  
**CTAC Funding \$15,000**

Current year — continued CTAC funding, supporting platform growth, local data and AI enhancements

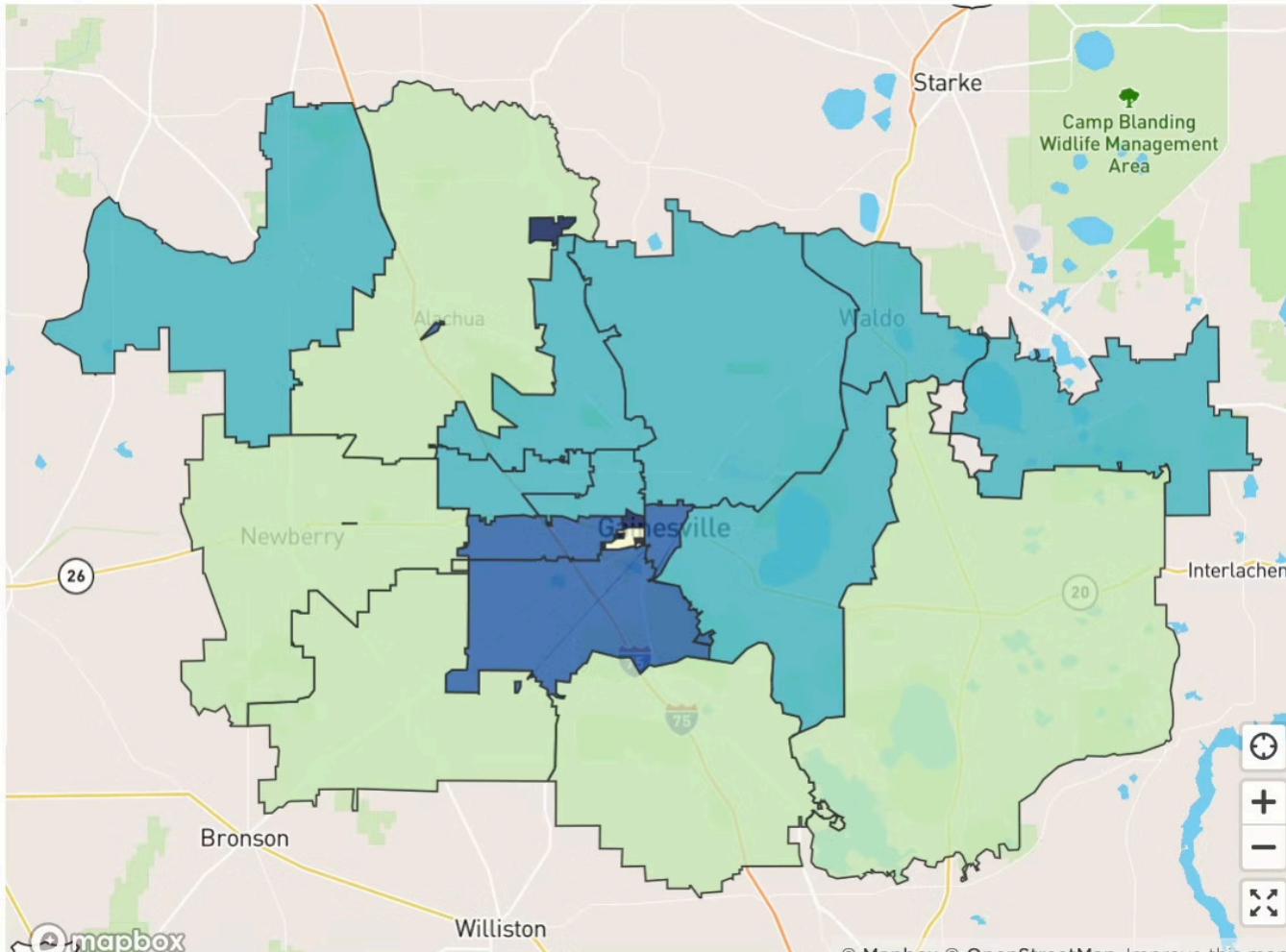
4

**Other Funders**  
**\$60,000**

Community Foundation, individual donors, and private foundations



# Community Indicators: Open to the Community



## No Cost to Community

Free public access to community data and indicators.

---

## Two Dedicated Sites

- **Community Indicators site** — live and accessible
  - **CTAC site** — in development with CTAC data staff, aligned to CTAC goals
- 

## Fee-Based Features

Advanced tools available for organizations needing deeper functionality and data

-Sample: Literacy SWOT Analysis

# Who Can Access What?

## General Public

Free access to community indicators, dashboards, and data stories

## Providers and Nonprofits

Free access — explore data relevant to their sector and populations served

## Custom Reports

Enhanced features for organizations requiring custom reporting or uploads

📄 The Community Foundation's goal: **no barrier** to community data access.





## COMMUNITY OUTREACH

# Data Deep Dives



### Unveiling and Release

October 2025 was the first rollout to the nonprofit sector. Gathered feedback.



### Sector Gatherings

Subsectors come together to explore available data and learn how to use it



### Identify Gaps

Sessions reveal what local data is missing — informing future collection



### Community Requests

Participants can request additional data relevant to their work

Next Data Deep Dive is on Literacy

April 15 at 10 a.m.

Open invitation to those in the sector, identified through The Philanthropy Hub



COMMUNITY FOUNDATION  
of North Central Florida

# Growing Local Data

The Community Foundation is committed to ensuring critical information reaches the audiences best positioned to drive impact: decision-makers, elected officials, nonprofit leaders, nonprofit grant writers, and private donors.

## Where We Are

Actively incorporating more local Alachua County data into the platform.

Data Deep Dives are surfacing community needs and guiding what gets added next.

Custom data provided to City, County, CTAC, Economic Development Committees, Housing Task Force, and more.

- The Community Indicators platform goal is to be used by community members, sector partners, nonprofit leaders, grant writers, private donors, and staff to explore data, track trends, and inform decision-making.
- Usage and impact are tracked through site analytics, user engagement metrics, and stakeholder feedback. Average 350 hits a month on site since nonprofit rollout in October.
- The platform is rolling out in phases, with stakeholder input shaping content and ongoing training and walkthroughs supporting adoption and consistent use.



Find an Organization to Support

Select a Cause

View All

« Prev 2 Next »

Page 2 of 9

[Boulware Springs Charter](#)

DONATE

VIEW PROFILE

[Boys & Girls Clubs of Northeast Florida – Alachua County](#)

DONATE

VIEW PROFILE

[Bread of the Mighty Food Bank](#)

DONATE

VIEW PROFILE

[Business Leadership Institute for Early Learning Inc](#)

DONATE

VIEW PROFILE

THE PHILANTHROPY HUB

# What Is The Philanthropy Hub?

[thephilanthropyhub.org](http://thephilanthropyhub.org) — A connected resource for nonprofits and funders in North Central Florida

## Nonprofit Directory

Searchable profiles of local organizations

## Funder Resources

Connects donors and funders to community needs

## Linked to Community Indicators

Data and community context flow between both platforms



COMMUNITY FOUNDATION  
of North Central Florida

LIVE DEMO

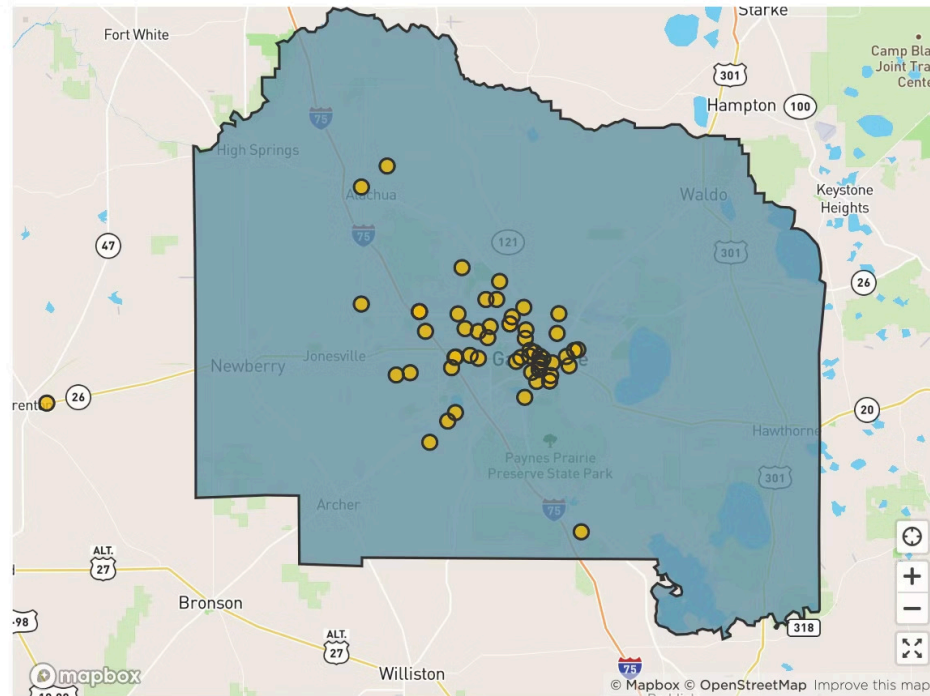
# Community Indicators + The Philanthropy Hub

## Connect with the Philanthropy Hub!

Find education and youth-serving nonprofits ready to partner with the community to make a difference for children.

[See a full list on the Community Foundation for North Central Florida's Philanthropy Hub](#), or explore the organizations on the map below.

### Philanthropy Hub Education & Youth Nonprofits



## [dashboards.mysidewalk.com](https://dashboards.mysidewalk.com)

Community indicators for Alachua County — open, free, and live.

## [thephilanthropyhub.org](https://thephilanthropyhub.org)

Linked nonprofit ecosystem — see how the two platforms work together.

[Demo: Navigate indicators → link to Hub profiles → explore sector data](#)

# North Central Florida Indicators LIVE DEMONSTRATION



# Thank You, CTAC Staff and Board

## Your Investment

Two years of CTAC funding making community data a reality

## Our Commitment

Expanding local data, deepening community engagement

## Together

Better data → better decisions → stronger outcomes for children & families



COMMUNITY FOUNDATION  
*of North Central Florida*

