



CHILDREN'S TRUST

OF ALACHUA COUNTY

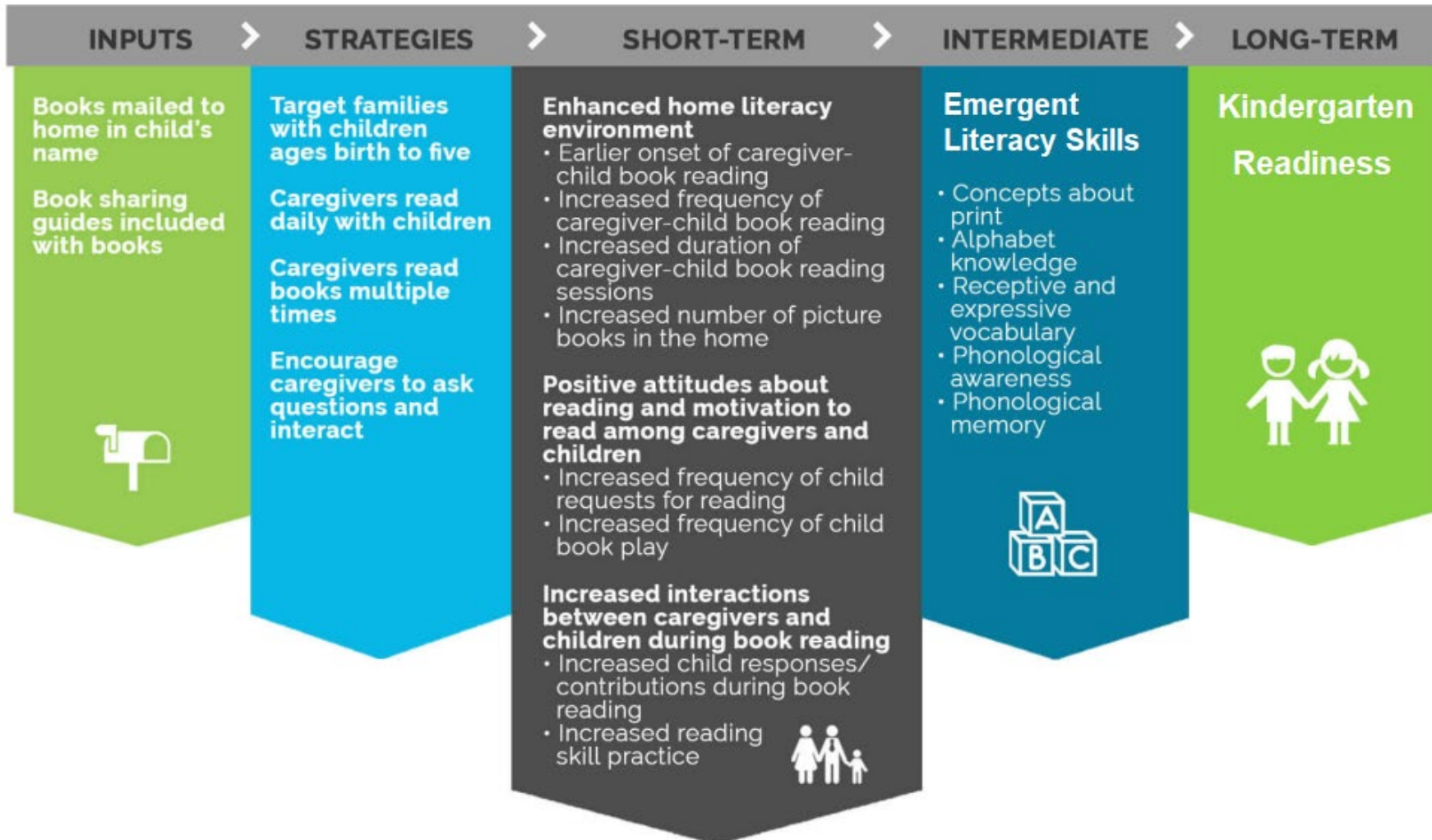
Dolly Parton Imagination Library Evaluation Results

May 11, 2026

Pathway to Impact



Logic Model

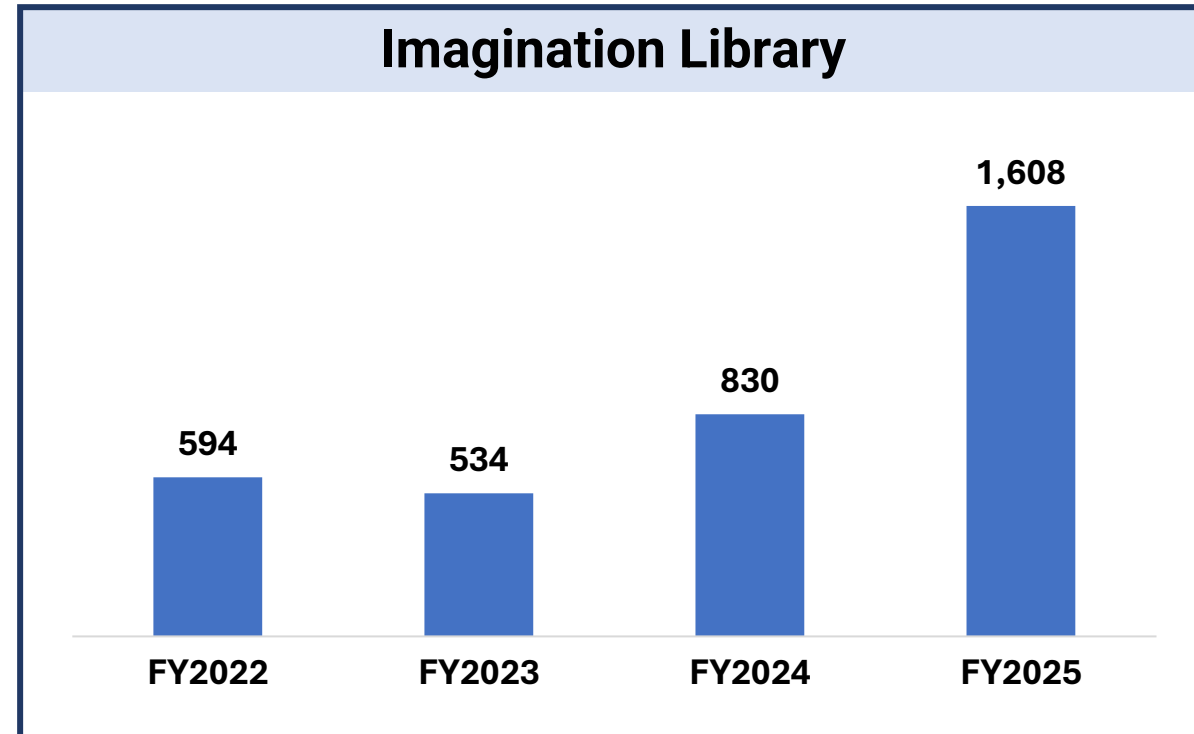


Children Served

Children served with funding from Children's Trust of Alachua County:



CHILDREN'S TRUST
OF ALACHUA COUNTY



Since inception, 3,330 children have been served through the Dolly Parton Imagination Library program.

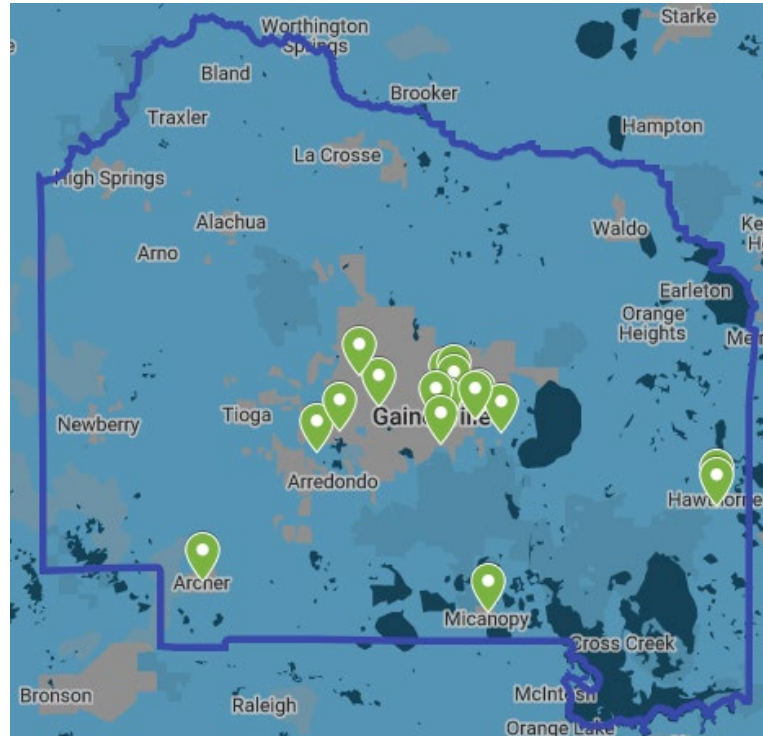
Imagination Library Outreach



In FY2025, Gainesville Thrives facilitated **125 outreach events** to increase program awareness and recruit families to join the program and **8 literacy events** to support parents in building literacy in their home.

Outreach Locations

- Library Partnership
- Hawthorne Library
- Cone Park Library
- GEZ Family Learning Center
- Martin Luther King Jr. Multipurpose Center
- Eastside High School
- Albert Ray Massey Park
- Cotton Club Museum and Cultural Center
- Early Learning Coalition
- Millhopper Library
- Tower Road Library
- Hawthorne Area Community Foundation
- Majestic Oaks Community Room
- Archer Library
- Micanopy Library
- Gainesville Housing Authority – Lake Terrace
- Gainesville Housing Authority – The Grove

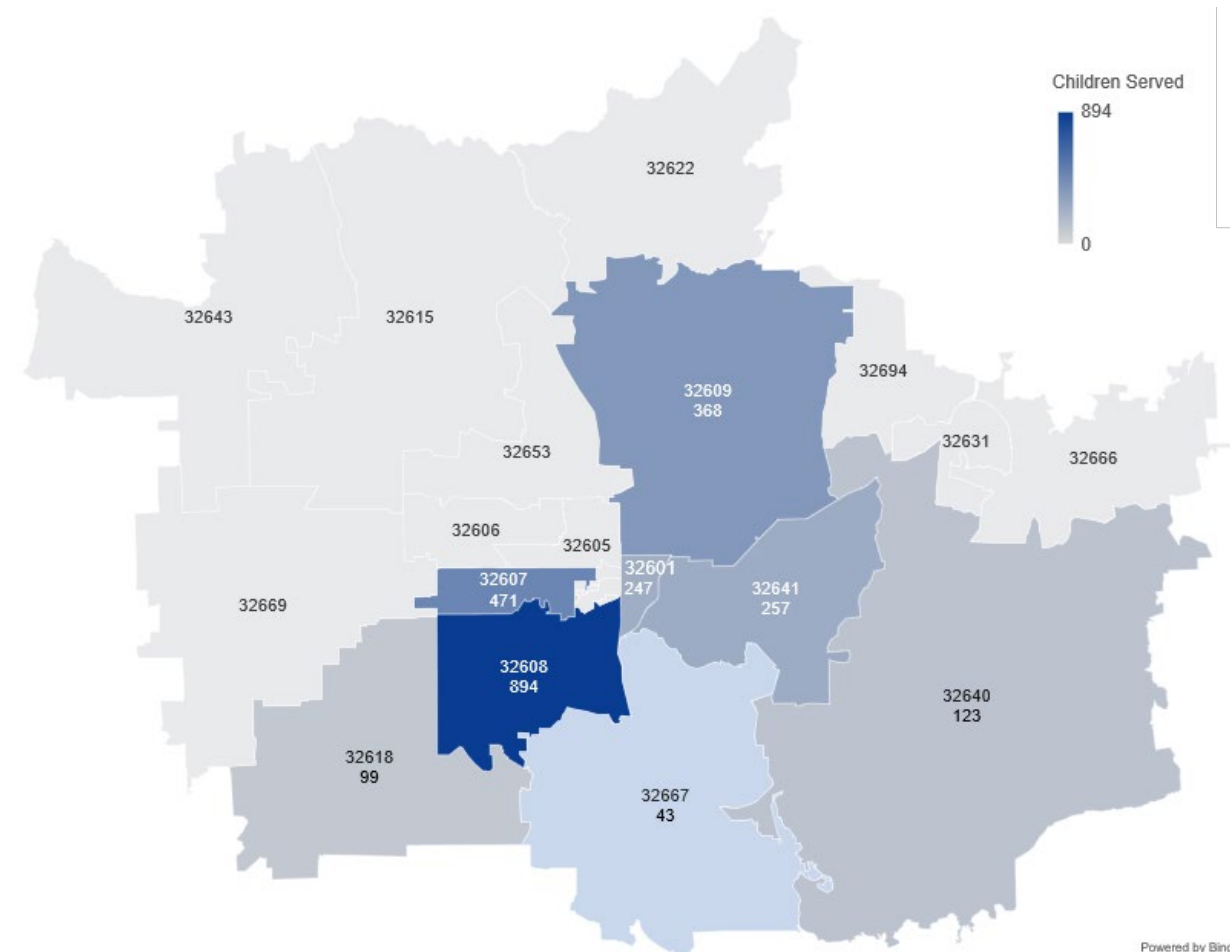


Children Served in FY2025

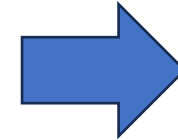
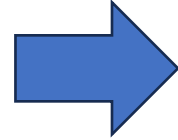


Children Served by Residence City and ZIP code

City and ZIP code	Count (%)
32601 – Gainesville	247 (10%)
32607 – Gainesville	471 (19%)
32608 – Gainesville	894 (36%)
32609 – Gainesville	368 (15%)
32641 – Gainesville	257 (5%)
32618 – Archer	99 (4%)
32640 – Hawthorne	123 (5%)
32667 – Micanopy	43 (2%)
Total Served	2,502



32608 is not CTAC funded



Enrolled

3,330

Books Received

68,116

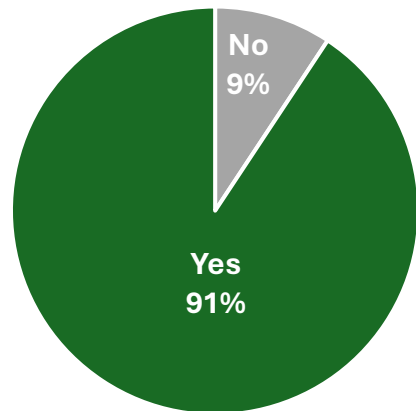
Graduated

1,108

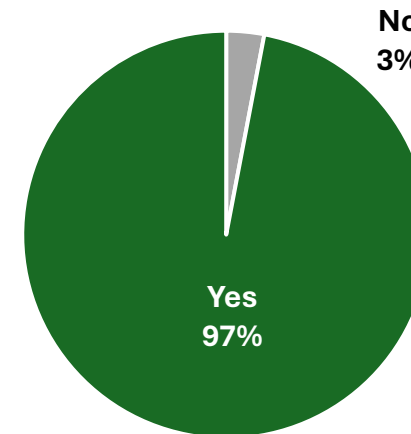
Parent Survey Report (n = 214)



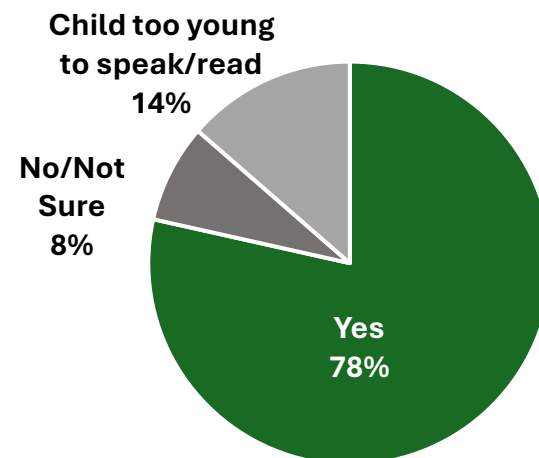
Parents who Read More Often With Child



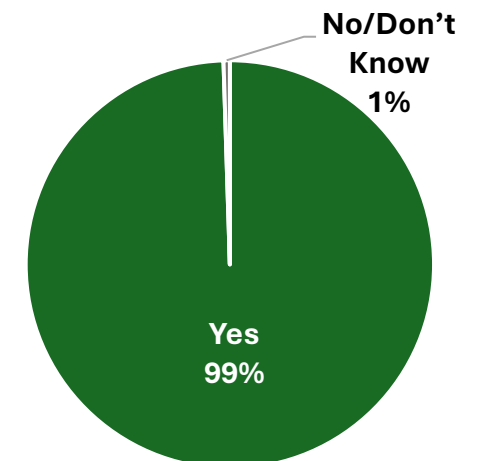
Parents Felt Encouraged to Read More with Child



Receiving Books Helped Child Learn New Words



Recommend Imagination Library Books



Performance Measures – FY2025



CHILDREN'S TRUST
OF ALACHUA COUNTY

How Much?

Measure	Target	Actual
Children Served	1,300	1,608
Books Distributed	13,000	15,319

How Well?

Measure	Target	Actual
Children enjoy books	90%	98%
Outreach events	50	133

Better Off?

Measure	Target	Actual
Parents read to their children more after enrolling in program	75%	91%

New Breakthrough DPIL Research



- Children **not read to** are six times more likely to be **developmentally vulnerable** in areas like language and cognitive skills.
- The **most significant predictor** of whether a child was ready to start school was whether they **were read to at home**.
- Children in Imagination Library were **more likely to be read to 4 or more days per week** than children not in the program.



- ↑ emerging literacy skills
- ↑ interest in books
- ↑ home literacy environments
- ↑ family reading routines

CTAC Proposed Research



Purpose

To learn whether Alachua County children engaged in the Dolly Parton Imagination Library (DPIL) program demonstrate higher kindergarten readiness.

Primary Questions

Do children engaged in DPIL demonstrate higher kindergarten readiness compared to children:

- a) Alachua County kindergarteners overall?
- b) comparable demographically, but not in DPIL?
- c) enrolled in DPIL for a lesser duration?

Methodology

Statistical analysis using data from the Dollywood Foundation and Alachua County Public Schools on 2025-2026 kindergartners who completed the Florida Kindergarten Readiness Screener (FLKRS).