

Goals Activities:

1

Children and Youth are Healthy and Have Nurturing Caregivers and Relationships

2

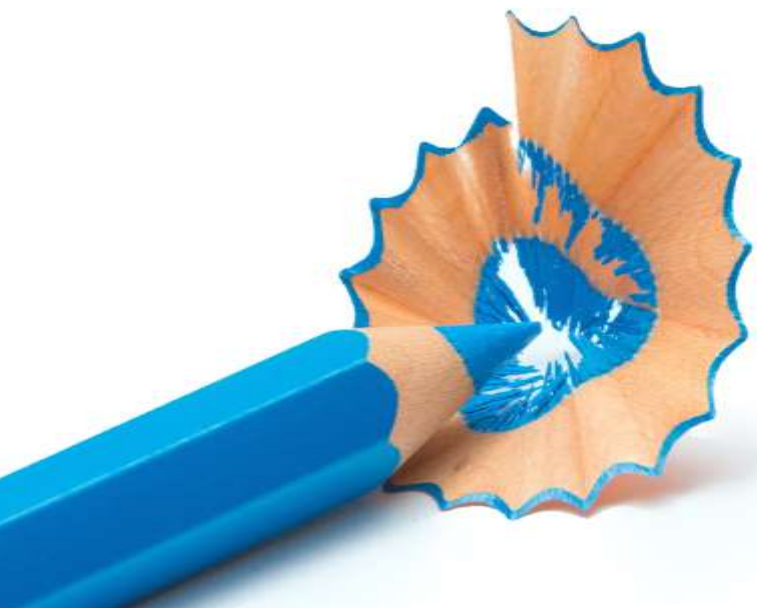
Children and Youth can Learn What They Need to Be Successful

3

Children and Youth Live in a Safe Community

4

Support the Success of Our Provider Community



1

Children and Youth are Healthy and Have Nurturing Caregivers and Relationships

A

Focus Area: Maternal Child Health Programs

1. **Indicator:** Babies meet appropriate milestones as they grow.
 - **Impact:** By 2030, 85% of babies whose families participate in CTAC funded programs will attend well-baby visits as recommended within the first year of life.
2. **Indicator:** Caregivers seeking services will participate in emotional and mental health support services, parental education courses, and community-based support systems.
 - **Impact:** By 2030, at least 85% of birthing women* will receive postpartum care in the first 60 days of the 4th trimester, and >80% of caregivers seeking services will participate in one or more mental health support services, parental educational courses, or community-based resources.

*who participate in CTAC-funded programs

B

Focus Area: Programs for Children and Youth with Special Needs

1. **Indicator:** Expanded supports and resources for families with children with special needs.
 - **Impact:** By 2030, CTAC-funded programs are better equipped and have increased capacity to serve children with special needs.
2. **Indicator:** Identify and fund a minimum of (2) two service providers to deliver high-quality programs and support for children with special needs and their families.
 - **Impact:** By 2030, more children with special needs receive services.



1

Children and Youth are Healthy and Have Nurturing Caregivers and Relationships

C

Focus Area: Family Resource Centers and Care Coordination and Navigation Services

Indicator: Families are connected with requested support.

Impact: By 2030, 90% of requested services were successfully delivered.

D

Focus Area: Access to Comprehensive Health and Wellness Services

Indicator: Children, youth, and caregivers successfully connect to health, wellness, mental and behavioral health, and social services.

Impact: By 2030, 75% of children and youth receiving services experience improved health outcomes.



2

Children and Youth can Learn What They Need to Be Successful

A

Focus Area: Quality Early Care and Education, including VPK outreach and messaging

Indicator: Children and families have access to affordable and high-quality early care and education, including VPK.

Impact:

- By 2030, More than 80% of BLI participants will maintain a CLASS quality rating of 5 or higher.
- By 2030, 65% of children in Alachua County are participating in VPK programs.

B

Focus Area: Reading and Academic Performance

Indicator: Children are performing academically on grade level.

Impact: By 2030, 75% of children and youth in CTAC funded programs with an academic component are reading and have math scores at or above grade level.

C

Focus Area: After School Programs

Indicator: Children and youth have access to available high quality supplemental education and enrichment services.

Impact:

- By 2030, 80% of children and youth attending CTAC-funded programs improve or maintain youth development skills.
- 80% of children and youth attending CTAC-funded after-school programs exhibit better school attendance than children not enrolled in CTAC-funded programs.



3

Children and Youth Live in a Safe Community

A

Focus Area: Ensuring Youth Have Positive and Safe Places For Engagement

Indicator: Children and youth have access to safe places to engage, play and build relationships. .

Impact: By 2030, CTAC funds summer camps in high need zip codes.

- 90% of parents of children in all CTAC funded summer camps report they felt their children were safe at camp.
- 90% of students participating in TeensWork Alachua will avoid involvement with the juvenile justice system.
- 80% of students participating in long-term programming will avoid involvement with the juvenile justice system.

B

Focus Area: Strengthened Relationships with Caring Adults

Indicator: Children and youth have opportunities to build supportive relationships with trusted adults.

Impact: *Contingent upon staff's development of the mentoring plan.*

C

Focus Area: Skill Building

Indicator: Youth build skills to manage conflict.

Impact: By 2030,

- 85% of participating youth are equipped with skills to manage conflict
- 80% of students participating in long-term programming will avoid involvement with the juvenile justice system.



4

Support the Success of Our Provider Community

A

Focus Area: Capacity Building

1. **Indicator:** Providers will be supported based on their non-profit Lifecycle stage.

Impact:

- Achievement of Individualized Result Based Performance Goals (How much?, How well? and Better off?)
- Growth in organizational capacity scores (via the assessment tools used)
- Enhance the quantity and/or quality of programming/services for children and families.

2. **Indicator:** Providers will be supported based on progress in strategic partnership development.

Impact:

- Increase revenue/operating budget by securing resources outside of CTAC

