



## CHILDREN'S TRUST REGULAR BOARD MEETING MINUTES

March 20, 2023 at 4:00 PM

CTAC, 802 NW 5th Ave, Gainesville, FL 32601

---

### Call to Order

Meeting called to order at 4pm by Chair T. Certain.

### Roll Call

### Agenda Review, Revision, and Approval

Approval of the agenda and the consent agenda Motion to approve and move item #7 to discussion by Member Cornell

Seconded by Member Labarta

Motion approved by all

### Consent Agenda

1. 12.16.2022 Steering Committee Strategic Plan Workshop Minutes
2. 1.19.2023 Steering Committee Virtual Strategic Planning Session Minutes
3. 2023 Board Attendance
4. 2.13.2023 Regular Board meeting Minutes
5. Board Meeting Evaluation Survey Results from 2.13.23
6. Programmatic Award and Expense Report
7. ~~Monthly Budget Review~~ moved to discussion
8. January 2023 Checks and Expenditures Report

### General Public Comments

Philip Kabler of CDS Family & Behavioral Health Services introduced himself to the group. He spoke to various financial needs that the organization currently has which includes a passenger van (to transport youth to/from school/events, other shelter-related purposes), a new Gainesville shelter in the recreation area, and a new solar panel system. The organization is currently building a new youth shelter.

Dorothy Thomas, chair and founding member of The CHILD Center for Early Learning, encouraged the board to look at the systems outcomes and how it all fits with the strategic vision the board and steering committee is developing.

Julie Moderie, Chief Operation Officer, and Program Director, of Healthy Start/Well Florida introduced her new team members assigned to the Fatherhood Initiative. Joe Neal, Fatherhood Regional Coordinator and Gregory Winloy, a local representative.

Yvette Robinson, CEO and Founder, shared that she is working to bring the Xavier House to Alachua County. The organization will work with children in the foster care system providing onsite education.

### **Chair's Report**

Chair T. Certain discussed various community conversations that she has been a part of regarding systems change. Chair Certain suggested that the Trust fund positions for subject matter experts in the areas of health, education, safety and support.

### **Executive Director's Report**

#### **9. 3.20.2023 ED Report**

Executive Director M. Kiner highlighted the second Business Leadership Institute's meeting. The meeting covered marketing, branding and social media. The next meeting will cover finances. ED Kiner shared a good news report Trust staff member Mia Jones was selected as one of twenty people to participate in the Rockwood Leadership Institute's Fellows Program. ED Kiner also shared that Dr. Dan Douglas, Communications Manager, has resigned and his last day will be at the end of the month. She thanked Dan for his hard work and dedication to the Trust.

### **Committee Updates-not**

### **Presentations**

#### **10. Jack Levine 4Generations Institute – Not present**

#### **7. Monthly Budget Review (Member Pinkoson)**

Member Pinkoson brought to the board's attention pages 115, 152, and 153 in the board packet. He further discussed concerns that the \$2 million dollars set aside for a building might not be enough to purchase what we need. Member Pinkoson along with other board members expressed the need to evaluate all Trust funds and funding priorities. Member Pinkoson requested a board workshop to continue the discussion. The date is to be determined.

### **Old Business**

#### **11. Pritzker Children's Initiative Community Grant and Early Learning Network Update (Mia Jones)**

Trust Staff M. Jones gave an update to the board to share the impact numbers for 2022 (year 2) and the goal for 2023 (year 3). M. Jones highlighted updates, next steps, and recommendations for expanding the Early Childhood Learning Network Quality Improvement System.

#### **12. Travel Policy Revision (Finance Director Diana Sanchez)**

Finance Director D. Sanchez informed the board that Travel Policy 8.110 was found to be inconsistent. A revision was made to follow §112.061, F.S. 2020 throughout the document. This policy will be used to authorize and obtain reimbursement of travel expenses for employees of the Trust, potential employees traveling to interview with the Trust, hired

consultants, other authorized persons, or board members traveling on behalf of the Trust. FD. D. Sanchez asked the board to vote to amend the policy.

Motion to approve Staff's recommendation made by Member Pinkoson  
Second by Member Cornell

Chair Certain asked that future backup materials contain redlines to highlight changes.  
Motion approved by all.

### 13. Fund Analysis Report FY23 and Unallocated Fund Balance Recommendations

Executive Director M. Kiner updated a request from the Board at the 2.13.2023 board meeting. FD D. Sanchez provided an estimate of the available Fund Balance budgeted but not otherwise encumbered. Director of Programs Kristy Goldwire presented the following recommendations on behalf of the Trust for unallocated fund use.

- \$124,175 to make seven Continuation Partners whole by increasing their funding to cover 12 months rather than the nine-month funding currently allocated.
- Piloting two Early Learning Initiatives (for a total of \$308,352). First, the Social Emotional Learning Pilot would support two local programs to strengthen families and utilize Conscious Discipline as a trauma-responsive social and emotional learning (SEL) tool. The second recommendation is for the Summer Bridge for Head Start Program which would displace summer camp and children during the summer and help to alleviate summer slide.
- Using \$500,000 for Mentorship and Character Building Mini-Grants. Staff would release a funding opportunity in June July for programs with a focus on mentorship and character building.
- Using \$100,000 of the unallocated funds for the Summer Camp Incentives approved by the Board.
- Approving \$50,000 for Greater Bethel AME Camp Excellence as a Summer Camp for 2023. Camp Excellence was funded in 2021 and was not funded in 2022.
- Initiating an Emergent Need Fund. Use \$150,000 of the unallocated funding for providers and others to apply for assistance for emergency or immediate needs related to capital, administrative, personnel expenses, and/or other emergent issues.
- \$116,000 of the unallocated funds for the additional funding needed for TeensWork Alachua which was approved at the February Board meeting.
- Using \$288,000 of the unallocated funds for Cost-of-Living Adjustments for 2023 for providers with active programs and contracts from 2022 and renewed for 2023.

#### Discussion

Members of the board asked questions about the exact figure that reflects year to date totals. Some members expressed concerns that the Trust is spending more than it is taking in, expressing the need to wait for the budget discussion before more funds are spent. A few board members wanted to allow for flexibility of the dollar amounts allocated for the mini grants.

#### Public Comment

Greg Bradley, of Mirror Image asked the Board to consider opening the Mentoring Mini-Grants and not limiting them to \$50,000 apiece. Allow for those with greater need to be considered as well as those with lessor needs.

Greg Parker, of IGB asked the Board to not hold up funding that could be used for summer programs/projects. He asked the Board to consider opening funding opportunities now for summer.

Motion to accept staff recommendations made by Member Labarta

Second by Member Snyder

Seven members voted in favor, two voted no (Member Pinkoson and Member Hardt)

Motion passed.

### **New Business**

#### **14. Data System Solutions (Bonnie Wagner)**

Trust Staff Bonnie Wagner recommends the Trust enter an agreement with Webauthor and the Florida Alliance for Children's Councils & Trusts (FACCT) for SAMIS and the Flex Enterprise Software modules. SAMIS is an integrated online information management system.

Motion made to accept staff's recommendation by Member Cornell

Second by Member Pinkoson

Motion approved by all.

### **Board Member Comments**

Member Snyder thanked staff and the Executive Director for the data provided.

Member Andrew thanked staff for the data provided in the backup materials.

Members Labarta and Pinkoson also thanked staff.

### **For Your Information**

Items in this section are for informational purposes only and do not require any action by the Trust.

15. <https://www.childrenstrustofalachuacounty.us/programs-directory-listing/2023-summer-program-directory-pdf-version>

Meeting adjourned by Chair T. Certain at 6:26pm.

### **Next Meeting Dates**

Special Meeting Workshop for Listening Project- Monday, April 3rd, 2023 @ 1:00 PM

Children's Trust of Alachua County, 802 NW 5th Ave, Gainesville, FL 32601

Regular Board Meeting - Monday, April 3rd, 2023 @ 4:00 PM



Children's Trust of Alachua County, 802 NW 5th Ave, Gainesville, FL 32601

Regular Board Meeting - Monday, May 8th, 2023 @ 4:00 PM

Children's Trust of Alachua County, 802 NW 5th Ave, Gainesville, FL 32601

### **Virtual Meeting Information**

View or listen to the meeting: [https://www.youtube.com/channel/UCpYNq\\_GkjCo9FQo3qR5-SOw](https://www.youtube.com/channel/UCpYNq_GkjCo9FQo3qR5-SOw)

Public Comments: Submit online at  
<http://www.childrenstrustofalachuacounty.us/commentcard>.

### **Guidelines for Public Comments**

Public comments can no longer be made in person at Children's Trust Board meetings. We will no longer take comments by Zoom or by phone. If you would like to submit a written comment or a written transcript of your public comment before or after the meeting, these will be provided to Board Members prior to the next Board Meeting.

Any member of the public wishing to be heard either under the agenda section "General Public Comments" or on a specific agenda item shall approach the podium at the appropriate time.

Members of the public recognized by the Chair will have three (3) minutes to speak on a single subject matter. If an individual seeks to be heard on more than one agenda item, the Chair shall determine the amount of time allotted to the speaker. However, such time shall not exceed ten (10) minutes without the approval of the Board or Committee. The Clerk of the Trust is the official timekeeper.

Public members may not share or transfer all or part of their allotted time to any other person or agenda item, except as permitted by this Policy. To the extent a speaker has previously addressed a Board or Committee on the same subject, the Board Chair may limit repeat comments at the Board meeting by the same speaker.



**CHILDREN'S TRUST**  
OF ALACHUA COUNTY

## CHILDREN'S TRUST REGULAR MEETING

March 20, 2023

CTAC Offices, 802 NW 5<sup>th</sup> Ave., Gainesville, FL 32601

### Attendance List

Name	Organization	Email address	Contact number
Julie Madore	Healthy Start/ Well Florida	jmadore@well florida.org	(352) 313-6500
Joe Neal	Healthy Start Well Florida	jneal@well florida.org	(814) 771-1096
Sharon Lee			
Martha Cox	Episcopal Childrens Svc	marthacox@ ecs4kids.org	904-535-0420
Greg Bradley	MFLA	gbradd794@ gmail.com	678 612 - 7224
Jeff Parker	I Gotcha Back	jeffp@igbt.org	352 672 4373
Candice King	community	you have →	
Dorothy Benson			
Alan Palm	Meridian	on file	352-672-2761
Dorothy In	child ctr	on file	911 797 6738
Gregory Winloy	Healthy Start		



**CHILDREN'S TRUST**  
OF ALACHUA COUNTY

## CHILDREN'S TRUST REGULAR MEETING

March 20, 2023

CTAC Offices, 802 NW 5<sup>th</sup> Ave., Gainesville, FL 32601

### Attendance List

Name	Organization	Email address	Contact number
Yvette Robinson	Xavier House	yvette.robinson@xavier-house.org	352 426 5600
Phil Kasper	CDS	philip.kasper@cdfsfl.org	352-244-0628, KRT 3824
Margot DeGonm	Food 4 Kids	margote.food4kids.fl.org	954 240 9819
Olysha Magruder	Xavier House	olyshamm@gmail	352 318 5341
Tiffany Martin	CHS	tiffany.martin@chsfl.org	850-688 2140
Chyma M	CHS	chyma.martinez@chsfl.org	347 344 0717
Tandra Simmons	NMB Organization	tandra@nmborganization.com	352-288-3450
Lena May	NMB ORG	Lmay@nmborganization.com	845-321-0070
James Miller	Mirror Image Leadership Academy	jmillers@mirror-image-leadership.org	352-264-0072

6. Travel Authorization Form means the standard form to be completed by the traveler before departure. This form includes the purpose, destination, dates, and estimated costs associated with the requested travel.
7. Travel Reimbursement Form means the form submitted by the traveler for reimbursement of eligible expenses.
8. Traveler means any individual authorized to receive travel reimbursement.

B. Travel Authorization Form

All travel outside of Alachua County requires a Travel Authorization Form signed by an immediate supervisor and the Executive Director or their designee. A copy must then be given to the Finance Department.

C. Lodging

Travelers may stay in hotels recommended by the event they are attending, or in competitively priced lodging for a particular geographic location. Travelers should request government rates (may be called GOV, CONUS, or per diem rates). Travelers who share a room and split the cost must claim actual expenses not to exceed the maximum provided: <https://www.flsenate.gov/Laws/Statutes/2020/12.061>. Supervisors cannot require travelers to share accommodations. Reservations may be held by either a CTAC purchasing card or a personal credit card.

D. Cancellations/Changes

In the case of a need to change or cancel a reservation, it is the employee's responsibility to do so as soon as possible in order to avoid any fees, to request and record change/cancellation numbers, and to request refunds or credits if at all possible.

E. Meals

Per diem or actual costs for meals will only be paid during the period of time spent outside of Alachua County on Trust business. You may find the requisite hours of travel that correspond to each per diem meal at § 12.061(5)(b), F.S. 2020: <https://www.flsenate.gov/Laws/Statutes/2020/12.061>. Meals are not reimbursable if the traveler is lodging in a personal residence with meals provided at no cost, or if the costs of meals are included in the total cost of a conference or meeting registration.

F. Mileage

Mileage is reimbursable for business use of an employee's personal vehicle; however, standard commuting costs must be deducted from their mileage reimbursement calculation. Standard commuting costs are the excess cost associated with miles traveled (round-trip) between the employee's primary residence (i.e., address on record) and the employee's assigned headquarters. Online mapping between locations may be required to substantiate mileage to/from the approved destination(s). Mileage will be reimbursed at the IRS standard mileage rate.

G. Other Reimbursable Expenses

Miscellaneous expenses are reimbursable when they are ordinary and necessary to accomplish the official business purpose of a trip. These include parking fees, tolls, taxi fares, and communication expenses, etc.

H. Sales Tax

The Trust is registered in the State of Florida as exempt from Florida tax; all travelers should have a copy of the CTAC Tax Exempt Certificate to present when making reimbursable purchases. The employee should pay with their CTAC purchasing card, if assigned, to ensure there is no sales tax included. If the traveling employee does not have an assigned purchasing card, hotels and other applicable advance purchases should be booked with the assistance of the CTAC administrative staff.





# CHILDREN'S TRUST OF ALACHUA COUNTY

*Pritzker Children's Initiative Community Grant  
and Early Learning Network Update*





**Objective 1:** Increase participation rates of those living <200% Federal Poverty Level by 17% annually in existing federally, state, and locally funded maternal and infant health programs

(WIC, Healthy Start, MIECHV, NewboRN, Healthy Families)



CHILDREN'S TRUST  
OF ALACHUA COUNTY



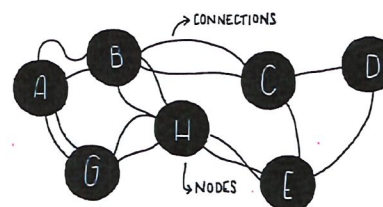
App Store



Google play

1.1 "The App"  
Increased  
Engagement

SYSTEM MAPPING



1.2 The Map



1.3 interagency  
coordination,  
inclusiveness, and  
effectiveness



1.4 Replication  
through State-wide  
agencies,  
collaboratives, and  
similarly related  
initiatives



COMMUNITY INNOVATION GRANT



PRITZKER  
Children's Initiative

Objective 2: Improve the quality and availability of early care and education services by increasing the percentage of accredited providers

Item 11



CHILDREN'S TRUST  
OF ALACHUA COUNTY



GREATER GAINESVILLE CHAMBER



Financial Incentives for  
Gold Seal Accreditation  
and  
Professional  
Development



COMMUNITY INNOVATION GRANT



CHILDREN'S TRUST  
OF ALACHUA COUNTY



Florida  
HEALTH  
WIC Florida



## IMPACT REPORT

Item 11

Pritzker Objective:		Baseline- 2020	Year 1 Increase	Year 2 Increase	Year 3 Goal
Maternal and Infant Health	Increase # of families (prenatal through age 3) receiving coordinated services through Connect.	1,666	100	110	130
	Increase # of families (prenatal through age 3) participating in home visiting programs.	1,227	298	98	65
	Increase # of families participating in NewboRN Home visiting Program.	275	231	189	60
	Increase # of children ages 0-3 actively participating in WIC.	2,283	276	16	125
	Increase # of SR children 0-3 in classrooms receiving Practice Based Coaching Services.	46	20	136	60
*countywide specific strategy					
Early Care and Education	Increase # of SR children 0-3 in quality early learning classrooms as measured by a minimum score of 4.5 on the CLASS assessment	114	114	No increase	97
	* zip code specific strategy 07,09,41				
	Increase # of SR children 0-3 in high quality childcare rated as "Gold Seal"	17	24	No increase	25
*zip code specific strategy 07,09, 41					

COMMUNITY INNOVATION GRANT





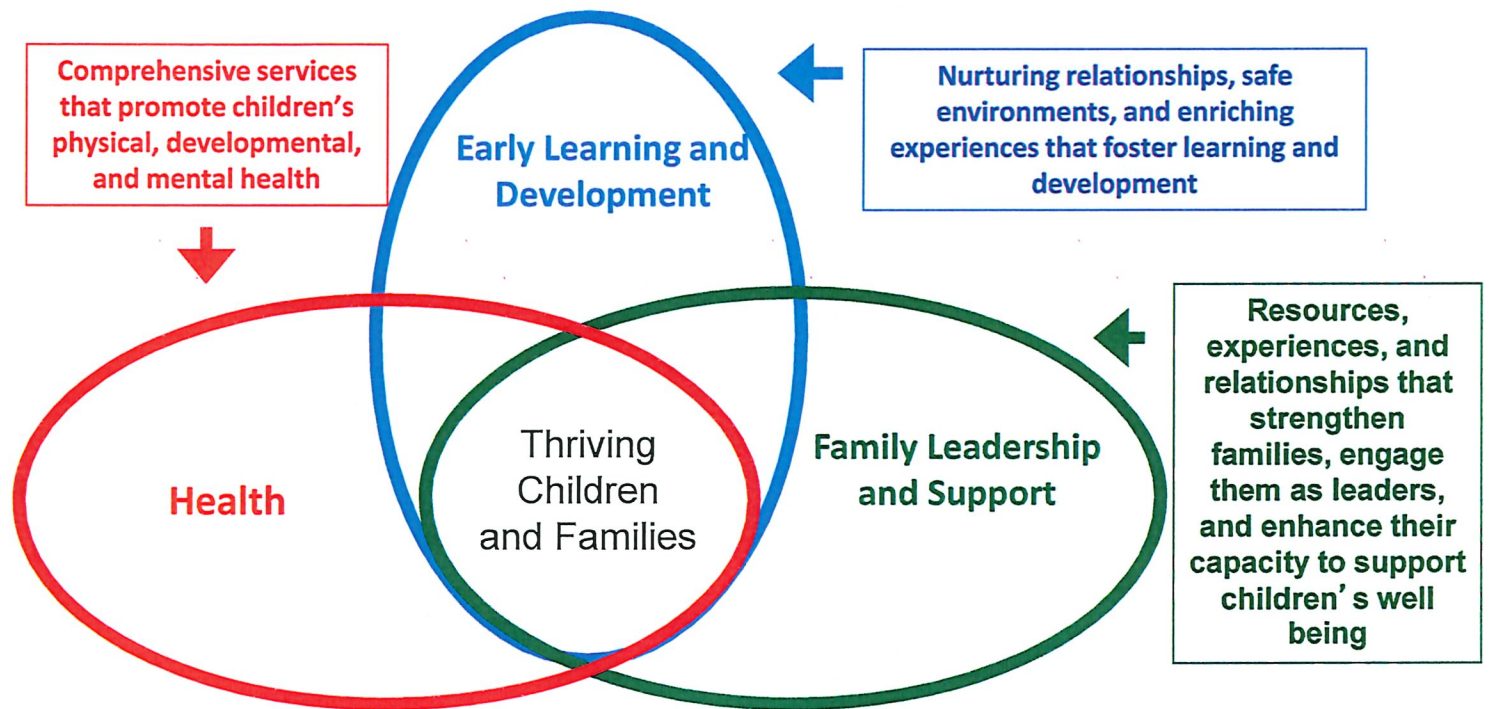
CHILDREN'S TRUST  
OF ALACHUA COUNTY



Item 11

PRITZKER

## Children's Initiative



Source: Early Childhood Systems Working Group (2011)

# Current Supports

The Children's Trust of Alachua County On The Way initiative invest funds that support children's development from birth to age 5 with a goal of ensuring families have what they need for healthy development and children are ready to learn when they arrive at kindergarten.

Item 11

<b>Health (Early Intervention)</b>	Help Me Grow Alachua
	Family Partner
	NewboRN Home Visiting
<b>Early Learning and Development</b>	Transformative Professional Development
	Business Leadership Institute for Early Learning Masterclass
	Accreditation Academy
	Gainesville Thrive
<b>Family Leadership and Support</b>	Project Youth Build Parenting Program
	Family Resource Center – Community Navigator

# Quality Improvement System Next Steps

## Research

- Gather data from all sources and domains
- Utilize the listening tour findings and completed strategic plan
- Utilize the local and state findings from the Future Project listening tour and other local assessments
- System Map- Review gaps and lessons learned

## Convene

- Identify a local expert to help develop model
- Create comprehensive funding strategy and subsidy rate cost estimation tools
- Host workgroups

## Launch

- Share model and strategy
- Build public awareness and common language
- Continued community conversations and annual community summit

**File Attachments for Item:**

12. Travel Policy Revision





---

**CHILDREN'S TRUST**  
**OF ALACHUA COUNTY**

---

Unallocated Funds Recommendations  
March 20, 2023



## Unallocated Funds Recommendations

Total Staff Recommendations		Funds
Program Recommendations		Requested
Summer camp Incentives - Board approved		\$100,000
Greater Bethel		\$50,000
TeensWork Alachua - Board Approved		\$116,500
Summer Bridge		\$183,352
Social and Emotional Learning		\$125,000
Mentorship and character building		\$500,000
Emergent Needs Funds		\$150,000
COLA		\$288,000
Sponsorships		\$25,000
Continuation Providers		\$124,175
		<b>\$1,662,027</b>

# Summer Camp Performance Incentives \$100,000




**Extended  
Hours of  
Operations**

**Family  
Engagement  
Activities**

**Extended  
Summer  
Duration**

**High  
Participation  
Rates**



Greater Bethel  
AME - Camp  
Excellence  
\$50,000

---

Greater Bethel AME Church

---

Pastor: Ron Rawls

---

Trust funded camp in 2021

---

Eligible for funding for 2022, but not  
awarded.

---

Additional camp services for 32641



# TeensWork Alachua \$116,500

Approved to support additional TWA staff to provide mentoring and employment coaching to 220 teens.



# Early Learning Initiatives

## Summer Bridge for Head Start

For displaced 3 and 4 years old in need of continued summer programming.

Length:	8-week pilot program
Dates:	June 5 – July 24
Number of Centers:	6
Number of Children:	164
Rate Per child:	\$27.95
Cost:	\$183,352.00
Administrative Cost:	\$0

# Healthy Social and Emotional Development

## \$125,00



- Collaborate with two local community partners to develop, create an implementation plan, and pilot a program within the early learning environment.
- Works with Educators along side Caregivers
- Combines therapeutic parenting and trauma-responsive social and emotional learning engagement strategies
- Links families and centers to other community partners if recommended for deeper collaboration
- Teaches parents what Educators are doing

# Mentorship & Character Building \$500,000

Providers that encourage youth to connect on a personal level

- Build trusting relationships
- Establish goals
- Celebrate success
- Delinquency and truancy prevention
- Building self-esteem

- Request for Proposal
- 10 Mini Grants
- June/July

# Emergent Needs Funds

## \$150,000

To provide a safety net when crisis situations arise that jeopardize services for local organizations that provide services to youth and their families.



**Capital**

**Administrative**

**Personnel  
Expenses**

**Emergent  
Needs**

## Cost of Living Adjustments \$288,000

Amend FY23 contracts to allow for cost of living adjustments for providers that meet the following criteria.

- FY22 contracts were renewed for FY23
- Must currently have an active program and contract

# Sponsorships \$25,000

## Community Engagement - Sponsorships

**Sponsorship funding provides a way for the Children's Trust to partner with community agencies and businesses as they engage the community in ways that benefit the children and families of Alachua County.**

- 100 Black Men of Greater Florida GNV – 4th Annual Aviation Academy
- 42nd Annual 5th Ave Arts Festival – Kids Corner
- Alachua County Child Abuse Prevention Task Force - Celebrate the Child Event
- Balance 180 Gymnastics & Sports Academy - The Carnival Classic Event
- BLSSD Future, Inc - Teach Me to Dance: Kids Dance Lessons
- Community Impact Corp. - 23rd Annual Stop the Violence: Back to School Rally
- Community Impact Corporation - Fatherhood Summit: Call to Action
- Early Learning Coalition - Back to School Backpack Giveaway
- Episcopal Children's Services – Wild Reading Safari: A Day at Santa Fe Zoo
- High Springs Chamber - Back to School event
- Just Between Friends - Safe Kids Event
- New Tech Now - Arts for Kids in Archer
- Premier Moms - Family Health & Fitness Day
- Soars Mentoring Services - East Gainesville Backyard BBQ Cook-Off
- UF Dance Marathon - Family Room: Kids Activities
- UF Student Life - UF Site Tours for Summer Camps
- United Way of North Central Florida - Reading Pals Program
- Vineyard Christian Fellowship -Spring Field Day



# Continuation Providers

## \$124,175

Seven provider contracts were renewed to provide direct community services for FY23 at a 9-month contract. Funds will be used to make contracts whole.

Total of 7 Continuation Providers	Current Funding	Recommendation
Big Brothers & Big Sisters	\$29,554	\$9,851
Peaceful Paths	\$27,500	\$9,167
FL Institute for Workforce Innovation - PYB	\$75,000	\$25,000
New Tech Now	\$47,792	\$15,931
PACE Center for Girls	\$75,000	\$25,000
UF Shands - PALS	\$75,000	\$25,000
Vineyard	\$42,688	\$14,226
	<hr/> \$372,534	<hr/> \$124,175



## SPONSORSHIPS

FY 2022-2023

\$25,000

Organizations Name	Project	Date of Event	Requested Amount	Awarded
City of Waldo	Fall Festival	10/22/2022	\$2,000.00	\$2,000
Dam the Torpedos	Tiny Bashers Kid Zone	11/5/2022	\$1,500.00	\$1,500
Just Between Friends	Safe Kids Day	11/12/2022	\$1,500.00	\$260
Sweetwater Square Apartments	Fall Festival	10/17/2022	\$1,700.00	\$500
Gator Junior Golf	Golf Training	10/27/2022	\$10,325.00	\$0.00
Powerhouse Family Worship Center	Christmas Toy Drive	10/18/2022	\$1,000.00	\$0.00
The Concrete Rose Foundation	College Tours	7/17/2023	\$10,650.00	\$2,000
Alachua County Council of PTA's	Disability Resource Expo	2/4/2023	\$2,010.00	\$2,010
Education Equalizer Foundation	College Prep 101	7/6/2023	\$2,500.00	\$2,500
Alachua County Child Abuse Prevention Task Force	Celebrate the Child	4/1/2023	\$1,075	\$1,075
Concerned Citizens of Newberry, Inc	Back to School event	8/5/2023	\$2,500	\$2,500
The Finer Foundation	Gun Violence Prevention	3/18/2023	\$2,000	\$2,000
Waldo Community New Vision Coalition	Education Health Fair	4/8/2023	\$500	\$500
Dream on Purpose, Inc	Career Launch Intensive	11/20/2022	2,000	\$2,000
Episcopal Children's Services	Parent Conference	4/28/2023	1,000	\$1,000
BLSSD Future, Inc	Teach Me to Dance	6/9/2023	\$1,000	\$1,000
Archer Cultural Progressive Organization	College Prep Seminar	8/4/2023	\$2,500	\$2,000
Just Between Friends	Safe Kids Day	4/22/2023	\$1,304.99	\$0.00
Manhood Youth Development Foundation, Inc	Civil Rights Road Trip	3/12/2023	\$11,500	\$1,500
Crafty Gemini Youth Development	Basketball Skills Camp	5/6/2023	\$1,500	\$1,000
	Reading			
	Coaches &			
	Students			
Vineyard Christian Fellowship of Gainesville	event	5/6/2023	\$1,500	\$500
TOTAL				\$25,845



# WHAT IS CDS?

CDS Family & Behavioral Health Services, Inc. is a private 501 (c) (3) non-profit social service agency.

**CDS is a lifeline for families.**  
**CDS is a resource for the community.**  
**CDS is a place to get help.**

CDS many wrap-around programs serve a wide variety of community needs. Be it parents or guardians struggling with troubled youth or children at high risk for dangerous behaviors or in crisis, CDS has programs that can help.



## COUNTIES WE SERVE

CDS HAS BEEN SERVING THE COMMUNITIES OF NORTH CENTRAL FLORIDA FOR OVER 53 YEARS. OUR SERVICES COVER 14 COUNTIES:

**ALACHUA-BAKER-BRADFORD-COLUMBIA-  
DIXIE-GILCHRIST-HAMILTON-LAFAYETTE-  
LEVY-MADISON-PUTNAM-SUWANNEE-  
TAYLOR-UNION**

## QUALITY IMPROVEMENT

We want to continue seeking your feedback regarding the services received to improve the process. Find us on Facebook and on Instagram.

# CONTACT US

**CDS Administration**  
Gainesville: (352)244-0628

**Youth Shelters**  
Interface Central (Gainesville):  
(352) 244-0618  
Interface East (Palatka):  
(386) 385-0405  
Interface Northwest (Lake City):  
(386) 487-0190  
Safe Place:  
(352) 244-0618

**Counseling Offices**  
Gainesville: (352) 244-0628 x 3822  
Palatka: (386) 385-0405  
Lake City: (386) 487-0190  
Prevention: (352) 244-0628  
SNAP: (352) 244-0628 x3804



"A COPY OF THE OFFICIAL REGISTRATION AND FINANCIAL INFORMATION MAY BE OBTAINED FROM THE DIVISION OF CONSUMER SERVICES BY CALLING TOLL-FREE (800-435-7352) WITHIN THE STATE OR BY VISITING WWW.800HELPFLA.COM. REGISTRATION DOES NOT IMPLY ENDORSEMENT, APPROVAL, OR RECOMMENDATION BY THE STATE."



Major support from: Florida Department of Juvenile Justice; Florida Network of Youth & Family Services; Florida Department of Children & Families; LSF Health Systems; Partnership for Strong Families; U.S. Department of Health & Human Services; United Way of Central Florida; United Way of Suwannee Valley; and individual donations.



**"Empowering youth  
&  
building strong  
families for a brighter  
tomorrow"**

3615 SW 13th Street,  
Suite 7  
Gainesville, FL 32608  
(352) 244-0628

Our facilities are  
accessible to individuals  
with disabilities.

[www.cdsfl.org](http://www.cdsfl.org)



Facebook.com/CDSFamily  
CDSfamilyandbehavioralhealth

FOLLOW US ON FACEBOOK



## OUR PROGRAMS

### CDS INTERFACE YOUTH PROGRAM

A place for youth ages 10-17 who are temporarily homeless, runaways (or threatened to), skipping school or refusing to follow directions. Youth receive individual, group, and family counseling. Our staff works with youth to address short-term needs and long-term goals.

### CDS FAMILY ACTION COUNSELING

Provides short-term counseling to families with children ages 6-17 who are ungovernable, truant, and who run away (or threaten to do so).

### SNAP FOR BOYS, SNAP FOR GIRLS

"Stop Now, and Plan" helps children ages 6-11 and their families with impulse control, anger management, and more. It is an evidence-based program to reduce risks and build positive outcomes.

### INDEPENDENT LIVING

This is a case management and support program for youth 16-23 aging out of foster care, working to improve the transition into adulthood by teaching valuable life skills and helping young adults pursue educational and career goals

### PREVENTION

Evidence-based prevention programs hosted in elementary and middle schools in Alachua, Gilchrist and Levy County proved to reduce risk factors and build protective factors in youth. Prevention staff also help run summer camps for children in various locations.

## CDS Commitment to You and Your Family

### MAINTAINING A SAFE ENVIRONMENT

Your safety is our first concern. We want to identify and respond to safety-related concerns rapidly and appropriately.



### ENGAGING INDIVIDUALS

There is no "wrong door," if CDS is not the right place to get needed services, we are committed to helping you find the right place whenever possible. We will work with you to assess your strengths and find solutions to the problems you have identified.

We will emphasize the appropriate discharge and transition planning throughout your involvement with us to make sure you use available resources to meet your expressed needs at no cost.

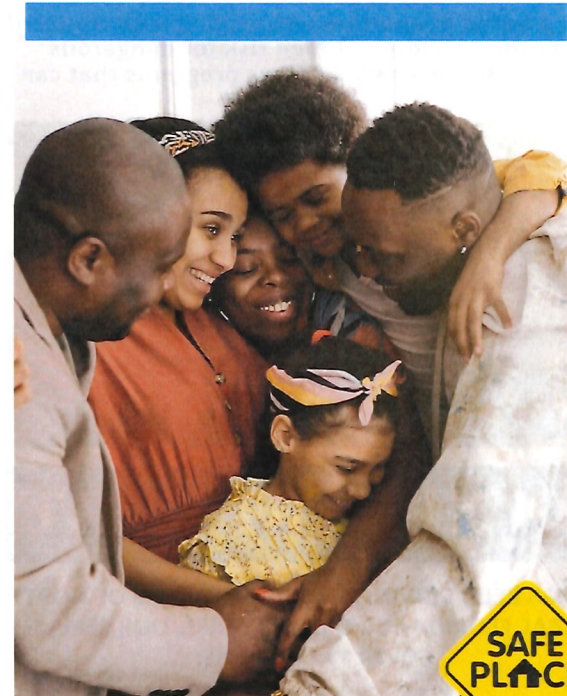
### SUPPORT OUR WORK!

We need your help! To continue providing FREE valuable services to the community, we appreciate your monetary, in-kind donations, or volunteer time. Contributions are tax deductible and vital to our ongoing success. For more information, visit our website at [www.cdsfl.org](http://www.cdsfl.org).

## OUR MISSION

CDS provides youth with a safe place to talk, be, and learn. Our wrap-around programs fulfill our mission of

**"Empowering youth & building strong families for a brighter tomorrow."**



SAFE PLACE

CDS sponsors and operates the Safe Place program. Safe Place is a national network of businesses and other community locations where youth in crisis can get immediate help.



# 2022 ANNUAL REPORT

## CDS



"Empowering Youth & Building Strong Families for a Brighter Tomorrow"

[www.cdsfl.org](http://www.cdsfl.org)



[www.cdsfl.org](http://www.cdsfl.org)



[Facebook.com/CDSFamily](https://www.facebook.com/CDSFamily)



[CDSfamilyandbehavioralhealth](https://www.instagram.com/CDSfamilyandbehavioralhealth)

SCAN THE QR CODE TO  
READ THE FULL REPORT





## MISSION

"Strengthening  
Communities by Building  
Strong Families"

Chief Executive Officer  
Philip N. Kabler, J.D.

## Board of Directors Executive Committee

President  
H. Thomas Lane, Jr.  
Paperless Solutions Group

Vice President  
Daniel Crapps  
Daniel Crapps Agency, Inc.

Secretary  
Richard Mankin, Ph.D.  
U.S. Department of Agriculture

Treasurer  
Frank Williams, Esq.  
Prosecutor US Attorneys Office

Past President  
Reginald L. Williams  
Levy County Schools (Retired)

## Board Members

Becky Hunt  
Southern Scholarship Foundation

Veita Jackson-Carter, M.Ed.  
Alachua County Public Schools

Debra Kinman-Ford, M.Ed.  
Cedarville Global Community  
School

Gilbert A. Levy  
VyStar Credit Union

Chief Jason L. Shaw, Sr.  
Palatka Police Department

Joseph E. Smith  
Levy County Judge (Retired)

Bishop Christopher C. Stokes  
Willie Mae Stokes Community  
Center, Inc.

Jim Surrency, Ed.D.  
Gilchrist County School District

Assistant Dean Robert E. Thomas  
University of Florida  
Warrington College of Business

## PROGRAMS

Youth Shelters  
Programs for youth in crisis

Counseling  
Services for troubled youth and  
their families

Prevention  
Educating the community,  
focusing on substance abuse,  
and reducing juvenile crime with  
a focus on high-risk youth



November 17, 2022

Dear Community Partner:

We are pleased to share a copy of the CDS Family & Behavioral Health Services, Inc. 2022 Annual Report.

In the Fiscal Year ending June 30, 2022 of the 339 youth who received services in our residential program, Interface Youth Shelter, 90% successfully completed our shelter program and 100% remained crime free.

In our community counseling program, Family Action, 346 youth and families were served with 99% completing services.

In our SNAP (Stop Now and Plan) program, 42 families participated in services with 100% successfully completing the program.

Prevention Services provided the evidence based program to 2,857 elementary and middle school youth.

Last year in our Independent Living program, 74 youth and young adults received support and guidance from our counselors.

We are proud that our last Stakeholder survey revealed that 100% of those responding answered Strongly Agree or Agree to the following statement:

"CDS has a good working relationship with our organization."

We are so fortunate to have a dedicated and committed Board, and on behalf of our Directors, we extend our gratitude to staff, community partners, and volunteers for their ongoing support of the CDS Mission:

**"Empowering youth & building strong families for a brighter tomorrow"**

If we may be of service to you, please contact us at 352-244-0628 or e-mail

Philip\_Kabler@cdfsfl.org or Tommy Lane at Tlane@lphllc.net.

Tommy Lane  
Board President

Phil Kabler  
CEO



**CDS Family & Behavioral Health Services, Inc.**

3615 SW 13<sup>th</sup> Street, Suite 4 • Gainesville, FL 32608

Tel: (352) 244-0628 • Fax: (352) 244-0668

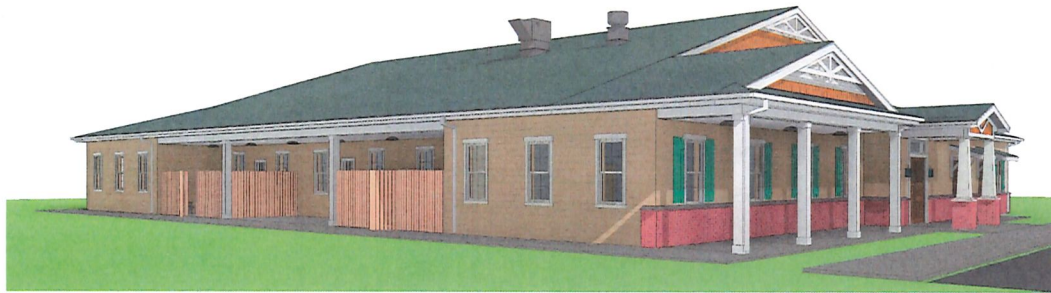
[www.cdfsfl.org](http://www.cdfsfl.org)



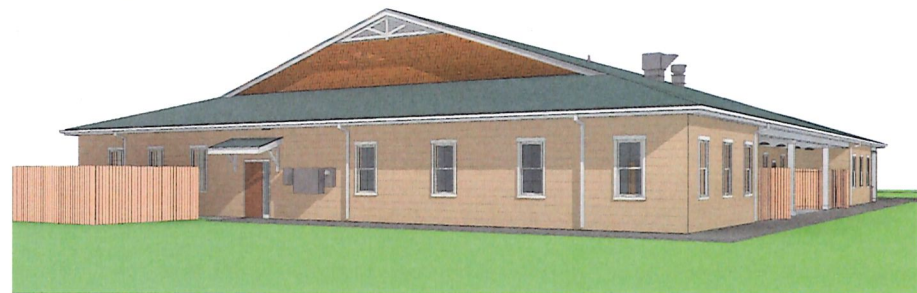
Major support from: State of Florida, Department of Juvenile Justice;  
Family Services, Inc.;

State of Florida, Department of Children & Families; LSF Health Systems; Partnership for Strong Families;  
U.S. Department of Health & Human Services;

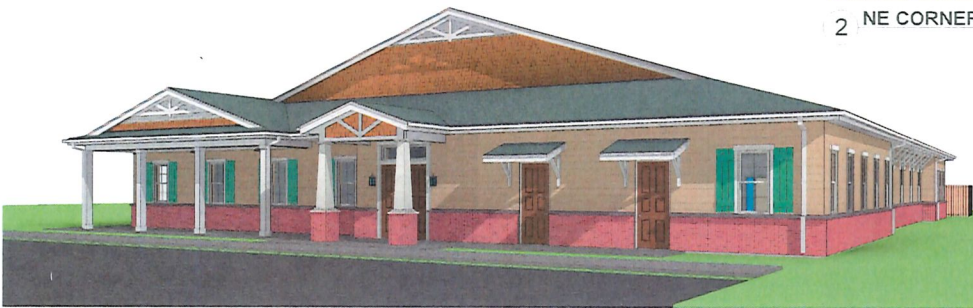
United Way of North Central Florida; United Way of Suwannee Valley; Individual Contributions



1 NW CORNER



2 NE CORNER



3 SW CORNER



4 SE CORNER

**NOT FOR CONSTRUCTION**  
THIS DOCUMENT IS A PRELIMINARY DESIGN  
FOR REVIEW ONLY AND IS NOT TO BE  
REPRODUCED OR USED FOR ANY OTHER  
PURPOSE WITHOUT THE WRITTEN  
CONSENT OF LEVEL ARCHITECTS, LLC

THIS DOCUMENT IS A PRELIMINARY DESIGN  
FOR REVIEW ONLY AND IS NOT TO BE  
REPRODUCED OR USED FOR ANY OTHER  
PURPOSE WITHOUT THE WRITTEN  
CONSENT OF LEVEL ARCHITECTS, LLC



**CDS FAMILY**  
PARCEL 08191-000-000

REVISIONS			
NO.	DATE	REV	BY

DESIGNER	PROJECT NO.
DRAWN BY	PROJECT NAME
CHECKED BY	DRAWING TITLE
DATE	EXTENDING SHEETS

SHEET NO.  
**A2.03**  
DATE/TIME PLotted  
3/16/2023 10:22:56 AM



