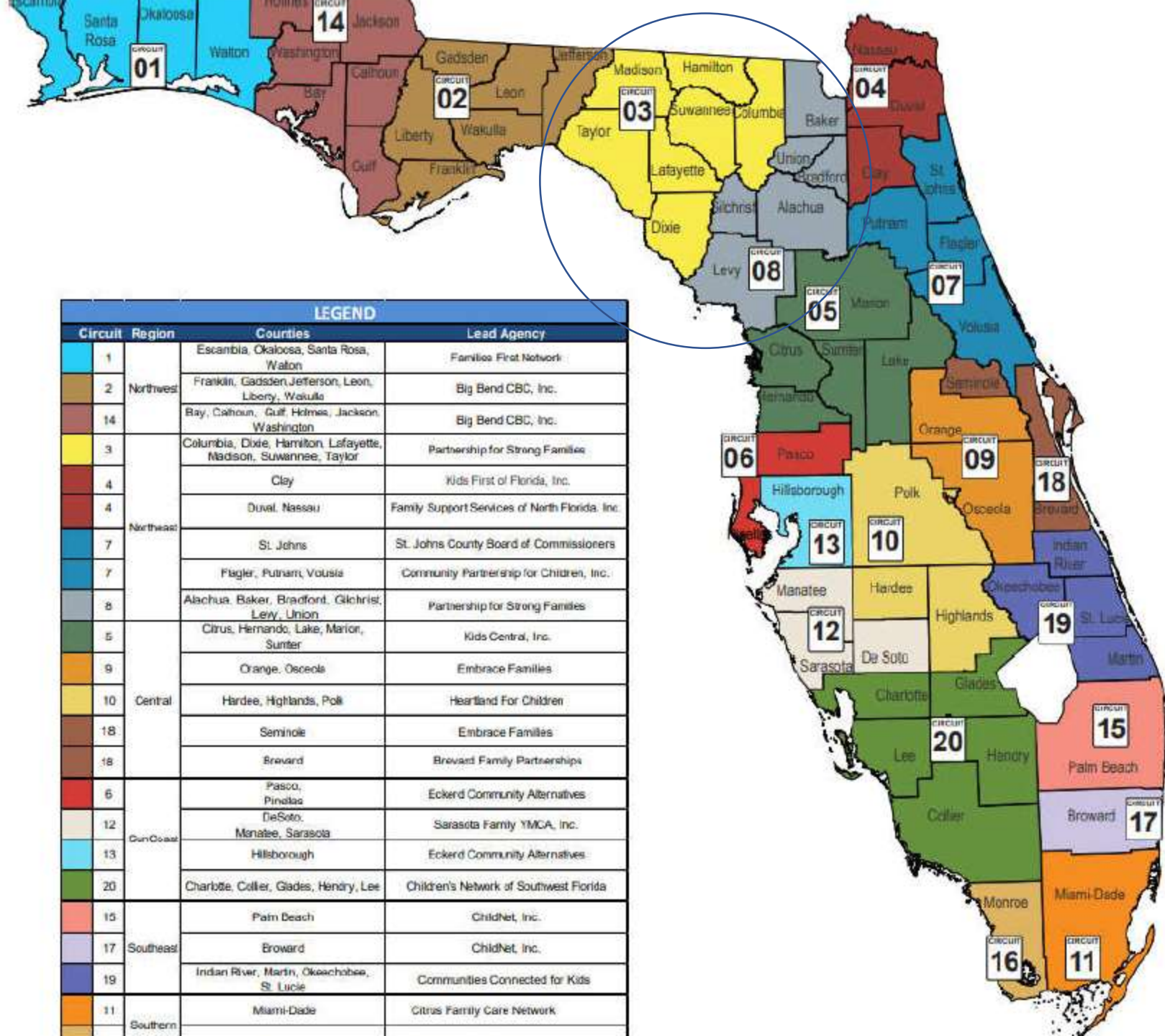




Overview of Service Delivery
for
Children's Trust of Alachua County

Stephen Pennypacker, CEO





Responsibility of Lead Agency

Florida Statute 409.986(3)(a)

“Care” means services designed to keep child safely in his/her home, returning safely home, or if removed, obtaining an alternative permanent home. Includes:

Prevention

Diversion

Related services



Child Protection and Child Welfare Outcomes

Florida Statute 409.986(2)

Children are protected from abuse and neglect

Children are maintained safely in their homes, if possible/appropriate

Services are provided to protect children and prevent removal

Children have permanency and stability

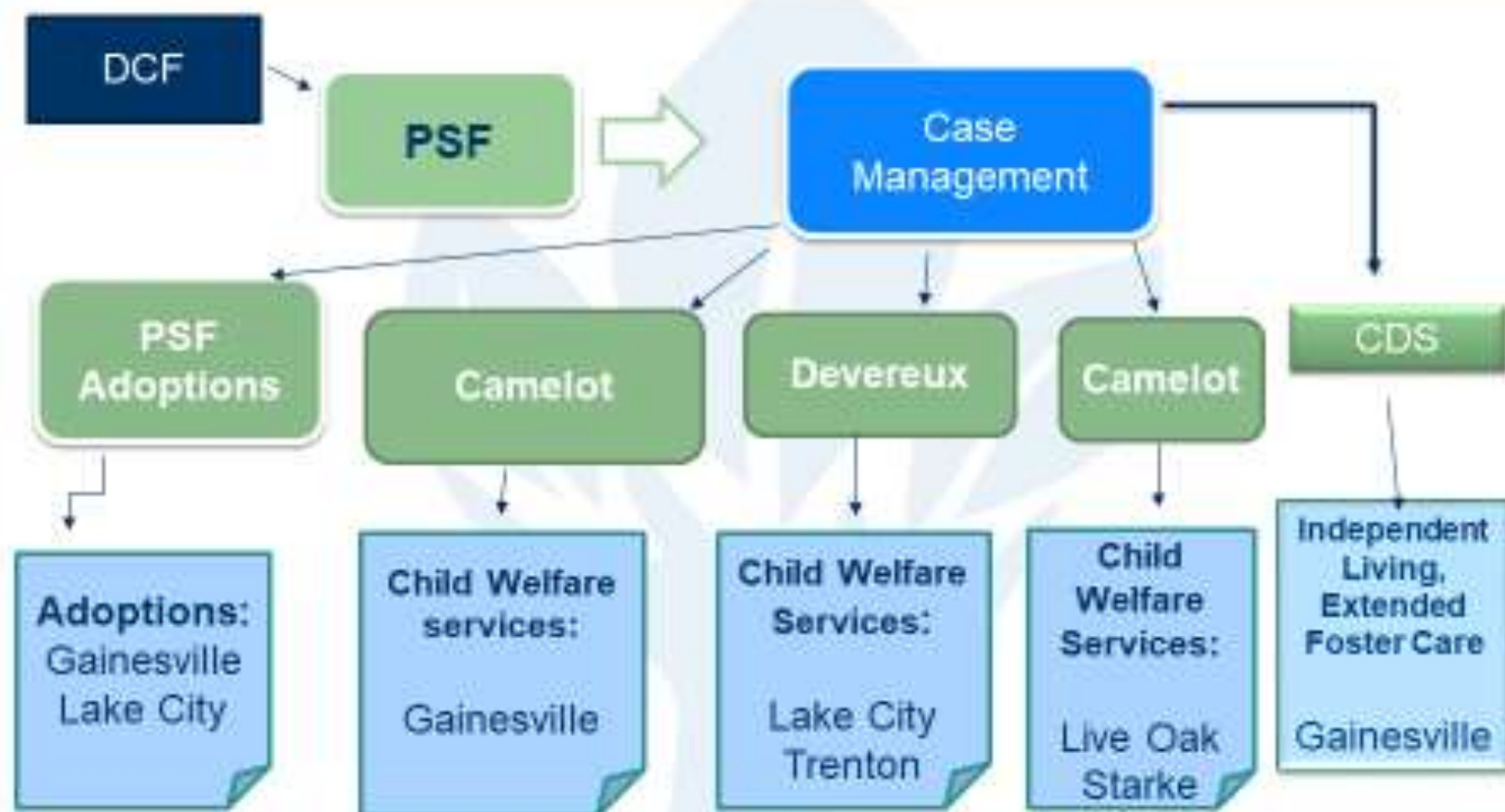
Families have enhanced capacity to provide for children's needs

Children receive services to meet their educational, physical and mental health needs

Children develop capacity for independent living and competence as an adult



Network of Partner Service Centers





Number of Children Currently Under PSF Supervision (All Counties)

- In Home – 484
- Out of Home – 870
- Total – 1,354



Number of Children Under Supervision (Alachua County)

- In Home – 188
- Out of Home – 292
- Total - 480

Funding for Lead Agencies

Florida Statute 409.990

- Funded by a grant of general revenue
- Other applicable state funds
- Federal funding sources
- Includes reasonable administrative costs
- PSF current contract for five years (2019-2024)

Resource Centers

- Gainesville
 - Library Partnership (2009)
 - SW Advocacy Group (SWAG) (2012)
 - Cone Park (2013)
- Chiefland
 - Tri-County Resource Center (2015)
- Lake City
 - NorthStar (2021)



Primary Prevention Services

Resource Center Network

PSF's Resource Centers offer a wide-range of services and supports designed to improve family outcomes and build stronger communities. Each of PSF's five Resource Centers are strategically located within historically underserved communities, providing a safe and non-stigmatizing place for families to seek assistance.

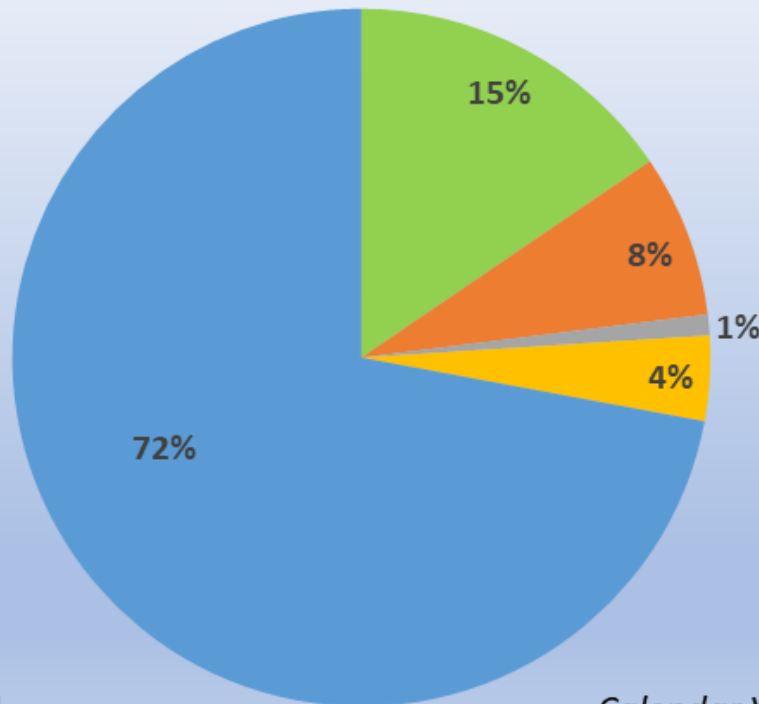
Healthy Social & Emotional Development Program

In partnership with Meridian Behavioral Healthcare and the Child Advocacy Center and with the support of the Children's Trust of Alachua County, PSF also offers family support services to the parents/caregivers of children attending one of six, carefully selected Alachua County early learning centers.



Protective Factors Framework

Services Requested By Protective Factor
(Alachua County RCs and SED Program Combined)



N=20,654

Calendar Year 2020

Concrete Supports

Food Pantries
Clothing Closets
Hygiene Products

Social Connections

Community Events
Resource Fairs
Special Interest Activities

Parenting & Child Development

Homework Help
After-School Enrichment Programs
Resource Sharing

Nurturing & Attachment

Parent-Child Activities
ABC Diaper Program

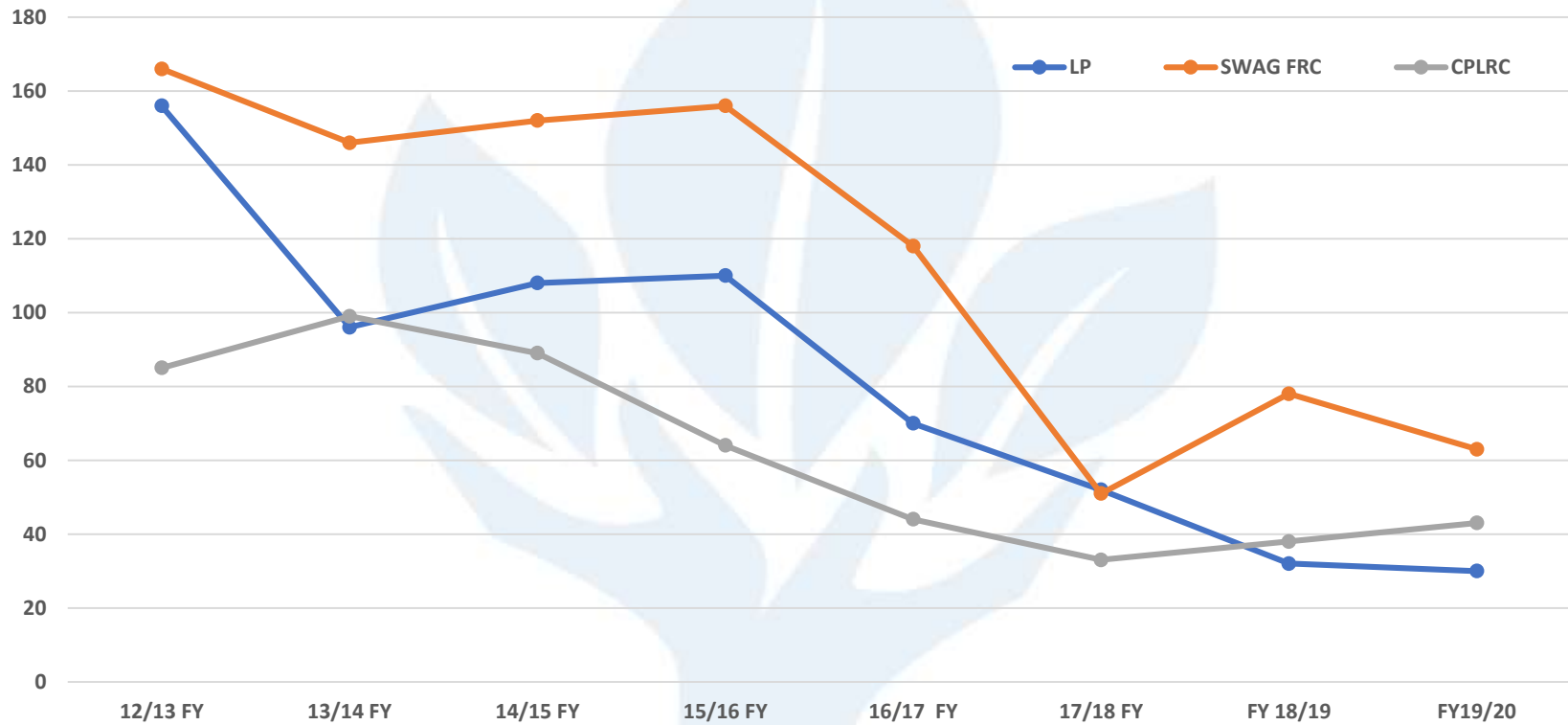
Parental Resilience

Financial Literacy Workshops
Employment Skills Training
Referrals to outside agencies

Maltreatment Data

Gainesville Resource Center Maltreatment Data

Zip Codes: 32601, 32607, 32608, 32609, 32641
FY 12/13 through FY 19/20



2020 Prevention Highlights



Of the **20,442 visits** to the Alachua County Resource Centers, **25%** directly involved services for **children between the ages of 0-17**. **34%** involved **parents/caregivers between the ages of 18-45**.

Amid the COVID pandemic, more than **20,000 concrete supports** were provided, including more than **3,000 lunches and family-style meals**, financial assistance, family activities, and more.



82% of SED program participants, completing pre and post Protective Factor Surveys, **improved one or more caregiver protective factors** with **50% improving in two or more areas**.

Resource Center Evaluation

PSF is 1 of 9 awardees of a multi-year, federal grant through the Children's Bureau. Funds are being used to more rigorously evaluate, refine and expand our Model to Lake City. **Grant funds do not support daily operations of the Gainesville Resource Centers.**

Process and Outcome Evaluation Tools

- Strengthening Families Self-Assessment Tool for Community-Based Programs (Process)
 - Collaboration Assessment Tool (Process)
 - Family Resources Scale (Outcome)
 - Perceived Stress Scale (Outcome)
- Strengths and Difficulties Survey (Outcome)
 - Protective Factors Survey (Outcome)

Resource Center Annual Budgets

- | | Salaries | Rent | Utilities | Other | Total |
|----------------------|----------------|---------------|--------------|---------------|----------------|
| Library Partners hip | 121,720 | 42,380 | | 3,432 | 167,532 |
| Cone Park | 118,126 | 12,348 | | 3,170 | 133,644 |
| SWAG | 46,842 | 100 | 5,626 | 22,076 | 74,644 |
| TOTAL | 286,688 | 54,828 | 5,626 | 28,678 | 375,820 |
| | | | | | |
| | | | | | |

Possible Programs for Creation and Funding in Alachua County

- **Attorneys for children in dependency and delinquency cases**

Children with disabilities or receiving SSI

Children being placed into residential treatment

Educational rights

Social workers for children and families
to assist with full representation

- **Evidence based programs for community patrons**

Motivational interviewing

Trust based relational intervention

Overview of Partnership for Strong Families



Thank You!