

Children's Trust of Alachua County

Environmental Scan

December 2022

Table of Contents

Alachua County

[Resources and Assets](#)

[Our Municipalities](#)

[Population Statistics and Child Demographics](#)

Indicators of Child Well-Being

[Health](#)

[Education](#)

[Support](#)

[Safety](#)

References

Resources and Assets

50,722 children

2,572 births

2 birth hospitals

7 prenatal care providers

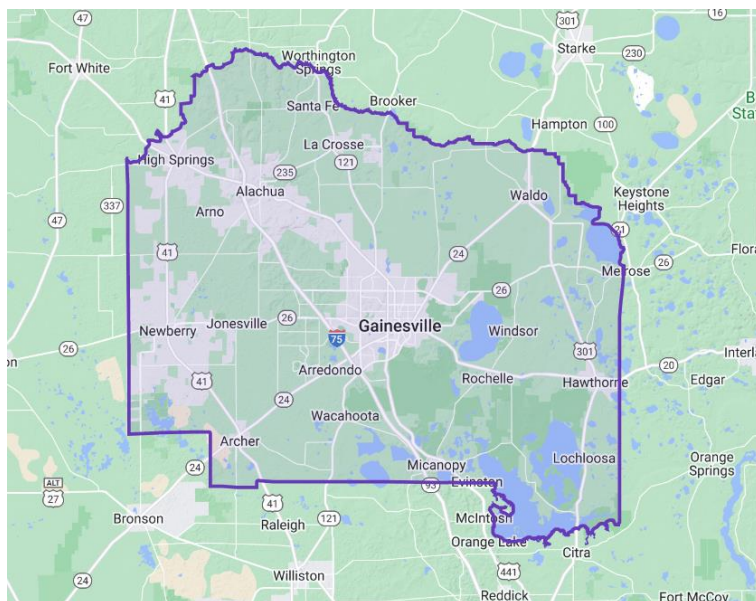
143 licensed child care providers

32 public elementary schools

18 public middle and high schools

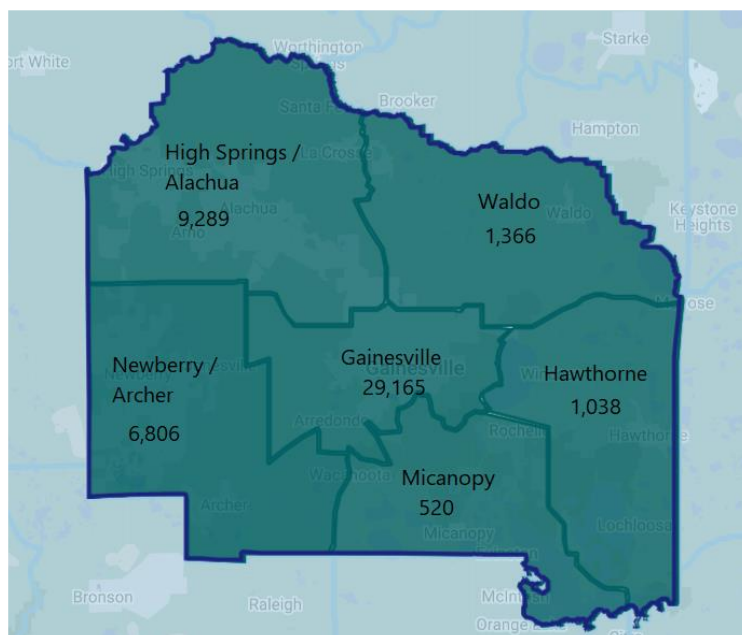
12 libraries

1,980 non-profit organizations



Our Municipalities:

- Alachua
- Archer
- Gainesville
- Hawthorne
- High Springs
- Micanopy
- Newberry
- Waldo



County Subdivisions

Gainesville

Hawthorne

High Springs-Alachua

Micanopy

Newberry-Archer

Waldo

Children Under 18

60.5%

2.1%

19.3%

1.1%

14.1%

2.8%

Population Statistics and Child Demographics

Child Population by Age

Age Group	Count	Percent
0-4 years	13,508	4.8%
5-9 years	15,826	5.7%
10-14 years	12,998	4.7%
15-17 years	8,390	3.0%
Total Child Population	50,722	18.2%
County Population	279,238	100%

Source: U.S. Census Bureau, American Community Survey (2021)

Income and Population by County

County	Median Household Income	Total Population	Child Population	Children Below Poverty
Alachua	\$56,445	279,238	50,722	18.1%
Clay	\$76,679	222,361	51,235	13.5%
Escambia	\$54,228	322,390	67,997	22.0%
Leon	\$58,118	292,817	54,912	19.2%
Okaloosa	\$69,823	213,255	47,863	16.1%
St. John	\$91,602	292,466	63,678	8.5%
St. Lucie	\$62,797	343,579	67,639	17.3%
Florida	\$63,062	21,781,128	4,287,823	18.2%

Source: U.S. Census Bureau, American Community Survey (2021)

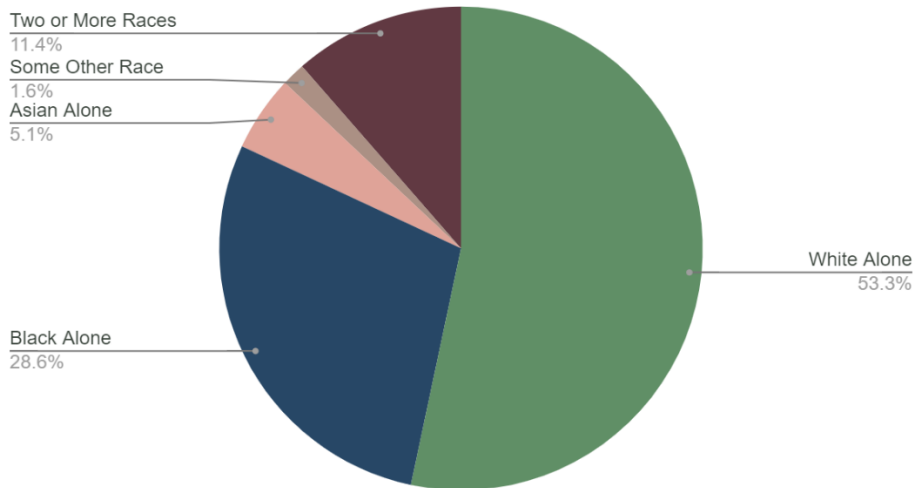
Children Below Poverty Level

Age Group	Gainesville	Hawthorne	High Springs-Alachua	Micanopy	Newberry-Archer	Waldo	Alachua County
Children under 18 years	18.3%	42.5%	21.0%	3.9%	12.7%	5.1%	18.1%
Children under 5 years	21.0%	67.3%	22.8%	11.0%	11.5%	8.6%	20.8%

Children Race and Ethnicity

Children 0-17	Percent
White Alone	53.2%
Black Alone	28.6%
American Indian / Alaskan Native Alone	0.1%
Asian Alone	5.1%
Native Hawaiian / Other Pacific Islander	0.0%
Some Other Race	1.6%
Two or More Races	11.4%
Total	100.0%
Hispanic or Latino	11.0%
White Alone, Not Hispanic	47.9%

Race of Children 0-17



Internet Access



Alachua County's child well-being ranking, out of 67 Florida counties. Based on Florida Kids Count's index of 16 child and family outcomes, Alachua County falls in the bottom half relative to other Florida counties.

Healthy	Educated	Supported	Safe
Prenatal Care	VPK Enrollment	Father Involvement	Child Injuries
Inter-Pregnancy Interval	Quality Child Care	Mental Health	Child Deaths
Healthy Pre-Pregnancy Weight	Kindergarten Readiness	Child Maltreatment	Youth Arrests
Low Birthweight Babies	Chronic Absence	Domestic Violence	Violent Crime
Oral Health	3 rd Grade Reading	Special Needs Inclusion	
Child Obesity	High School Graduation		
Teen Alcohol/Drug Use			

Healthy

First Trimester Prenatal Care by County

County	2017	2018	2019	2020	2021
Alachua	81.0%	80.3%	78.9%	78.3%	80.0%
Clay	73.9%	74.1%	74.0%	67.4%	64.5%
Escambia	73.7%	73.7%	73.7%	70.9%	71.4%
Leon	77.1%	79.7%	75.8%	76.8%	77.7%
Okaloosa	82.9%	81.9%	79.3%	73.1%	78.1%
St. John	83.8%	84.4%	84.8%	81.0%	73.5%
St. Lucie	64.6%	72.5%	74.0%	71.6%	70.4%
Florida	77.3%	76.5%	75.9%	76.1%	74.0%

Source: FL Health Charts – Birth Count Query System

Mother's Pre-Pregnancy Healthy Weight by County

County	2017	2018	2019	2020	2021
Alachua	45.1%	45.1%	42.1%	41.6%	43.0%
Clay	41.7%	39.7%	37.7%	35.7%	34.3%
Escambia	39.6%	38.8%	38.7%	36.8%	36.8%
Leon	41.9%	41.0%	41.9%	39.8%	41.7%
Okaloosa	46.2%	43.8%	42.9%	42.5%	42.8%
St. John	52.3%	49.3%	50.3%	48.0%	47.2%
St. Lucie	37.6%	38.4%	34.1%	32.8%	33.9%
Florida	44.5%	43.0%	41.7%	40.9%	39.5%

Source: FL Health Charts – Birth Count Query System

Mother's Pre-Pregnancy Weight in Obese Range by County

County	2017	2018	2019	2020	2021
Alachua	27.8%	27.4%	29.1%	28.7%	29.6%
Clay	28.3%	30.9%	30.8%	33.4%	34.5%
Escambia	30.0%	31.4%	31.3%	34.1%	33.3%
Leon	29.2%	30.3%	29.2%	30.9%	30.4%
Okaloosa	25.1%	24.6%	26.4%	28.0%	27.3%
St. John	19.5%	20.5%	20.7%	20.9%	21.8%
St. Lucie	30.6%	30.4%	34.0%	35.4%	34.8%
Florida	25.0%	26.2%	27.1%	28.1%	28.9%

Source: FL Health Charts – Birth Count Query System

Healthy

Inter-Pregnancy Interval < 18 months by County

County	2017	2018	2019	2020	2021
Alachua	37.5%	36.9%	36.2%	40.2%	39.5%
Clay	34.4%	35.3%	33.9%	36.1%	36.5%
Escambia	34.4%	35.3%	33.9%	36.1%	36.5%
Leon	34.3%	39.5%	38.8%	35.9%	36.7%
Okaloosa	42.2%	41.5%	41.7%	42.9%	40.8%
St. John	41.7%	41.7%	40.8%	41.5%	41.5%
St. Lucie	34.5%	33.1%	35.1%	37.0%	36.8%
Florida	34.8%	34.5%	34.9%	35.6%	35.9%

Source: FL Health Charts – Birth Count Query System

Babies Born Low Birthweight by County

County	2017	2018	2019	2020	2021
Alachua	10.1%	10.9%	11.7%	11.0%	10.3%
Clay	7.8%	8.4%	8.1%	8.1%	8.3%
Escambia	10.2%	10.7%	9.2%	11.1%	11.4%
Leon	9.3%	10.1%	10.1%	11.2%	10.0%
Okaloosa	7.7%	8.2%	8.5%	8.5%	8.3%
St. John	7.1%	6.6%	6.9%	6.7%	7.3%
St. Lucie	8.7%	8.6%	9.3%	8.5%	9.2%
Florida	8.7%	8.8%	8.7%	8.8%	8.7%

Source: FL Health Charts – Birth Count Query System

Middle and High School students who are Overweight or Obese

County	2014	2016	2018	2020	2022
Alachua	25.8%	29.3%	30.6%	32.0%	31.1%
Clay	26.9%	28.0%	30.0%	28.4%	30.5%
Escambia	30.1%	32.1%	30.0%	31.5%	33.2%
Leon	26.7%	-	-	29.8%	30.5%
Okaloosa	-	26.1%	28.0%	28.9%	29.6%
St. John	-	-	21.7%	19.3%	20.1%
St. Lucie	29.4%	-	32.9%	36.2%	40.5%
Florida	27.7%	29.4%	30.4%	30.4%	31.7%

Source: Florida Department of Health, Florida Youth Tobacco Survey

Healthy

High School Students who used Alcohol in the Last 30 days by County

County	2014	2016	2018	2020	2022
Alachua	28.4%	27.6%	21.3%	24.7%	21.5%
Clay	30.8%	29.6%	23.8%	22.9%	15.5%
Escambia	27.9%	23.1%	24.0%	13.6%	11.7%
Leon	26.1%	28.9%	21.9%	18.3%	20.3%
Okaloosa	27.9%	25.9%	21.6%	24.6%	15.4%
St. John	27.9%	28.3%	26.2%	30.6%	24.5%
St. Lucie	29.1%	18.3%	15.2%	24.3%	5.6%
Florida	28.4%	25.5%	21.2%	19.9%	15.5%

Source: Florida Youth Substance Abuse Survey

High School Students who used Any Illicit Drug in the Last 30 days by County

County	2014	2016	2018	2020	2022
Alachua	22.9%	23.8%	19.8%	22.3%	18.2%
Clay	21.9%	19.0%	20.8%	21.6%	15.7%
Escambia	21.6%	16.8%	20.5%	13.8%	14.9%
Leon	18.6%	20.4%	18.7%	21.4%	22.8%
Okaloosa	19.5%	19.4%	16.4%	18.3%	14.3%
St. John	18.8%	20.1%	21.1%	23.1%	18.2%
St. Lucie	23.7%	19.8%	19.8%	10.1%	8.0%
Florida	22.3%	20.0%	19.0%	19.5%	15.7%

Source: Florida Youth Substance Abuse Survey

Educated

VPK Utilization rates by County

County	2017-18	2018-19	2019-20	2020-21	2021-22
Alachua	80.6%	78.9%	73.8%	49.3%	
Clay	68.6%	68.2%	69.5%	60.0%	
Escambia	59.4%	56.8%	54.5%	38.1%	
Leon	68.6%	66.2%	62.2%	51.9%	
Okaloosa	91.4%	91.4%	84.8%	64.6%	
St. John	89.1%	90.7%	84.8%	77.9%	
St. Lucie	76.6%	75.5%	72.0%	57.2%	
Florida	75.8%	74.2%	71.2%	56.8%	

Source: Florida Office of Early Learning

Kindergarten Readiness rates by County

County	2017-18	2018-19	2019-20	2020-21	2021-22
Alachua	57.5%	58.2%	56.9%	58.4%	54.8%
Clay	53.9%	53.3%	53.5%	57.4%	54.2%
Escambia	45.8%	45.2%	46.8%	48.1%	42.0%
Leon	53.0%	55.7%	53.5%	61.6%	49.5%
Okaloosa	57.7%	56.6%	54.7%	56.0%	52.2%
St. John	72.6%	70.7%	72.5%	66.9%	65.6%
St. Lucie	49.1%	46.6%	47.4%	49.0%	48.6%
Florida	53.9%	52.7%	53.4%	56.9%	49.9%

Source: Florida Department of Education

3rd Grade Reading Proficiency by County

County	2017-18	2018-19	2019-20	2020-21	2021-22
Alachua	56.0%	56.6%		52.5%	49.7%
Clay	67.8%	67.9%		63.2%	60.9%
Escambia	51.6%	56.4%		52.7%	50.5%
Leon	61.3%	61.0%		54.2%	54.4%
Okaloosa	65.7%	66.0%		62.6%	58.3%
St. John	78.0%	78.1%		77.9%	76.0%
St. Lucie	46.3%	50.0%		47.0%	47.6%
Florida	56.9%	57.6%		54.4%	53.0%

Source: Florida Department of Education

Educated

Students Absent 21 or More Days by County

County	2017-18	2018-19	2019-20	2020-21	2021-22
Alachua	11.8%	11.6%	7.8%	16.0%	18.9%
Clay	12.4%	11.7%	6.6%	19.6%	22.0%
Escambia	12.7%	14.1%	8.1%	19.6%	21.8%
Leon	12.9%	14.1%	14.5%	25.6%	22.5%
Okaloosa	9.6%	9.5%	4.8%	8.7%	12.8%
St. John	7.1%	7.2%	3.7%	8.4%	10.1%
St. Lucie	18.4%	17.8%	17.0%	21.5%	29.4%
Florida	11.3%	11.3%	9.8%	16.6%	20.9%

Source: Florida Department of Education

High School Graduation by County

County	2017-18	2018-19	2019-20	2020-21	2021-22
Alachua	88.0%	88.5%	90.4%	86.6%	
Clay	91.1%	91.9%	93.4%	92.7%	
Escambia	80.7%	84.8%	86.5%	87.0%	
Leon	93.0%	92.4%	94.4%	94.0%	
Okaloosa	88.1%	87.9%	90.0%	92.2%	
St. John	93.3%	94.3%	94.8%	95.0%	
St. Lucie	91.8%	90.4%	93.2%	94.5%	
Florida	86.1%	86.9%	90.0%	90.1%	

Source: Florida Department of Education

Support

Paternity Acknowledged on the Birth Certificate by County

County	2017	2018	2019	2020	2021
Alachua	86.4%	86.3%	87.7%	84.8%	87.3%
Clay	90.1%	90.0%	90.3%	90.8%	90.0%
Escambia	80.3%	80.1%	80.0%	80.6%	81.7%
Leon	84.6%	86.5%	85.8%	84.3%	85.2%
Okaloosa	90.5%	89.8%	90.4%	90.2%	91.3%
St. John	93.7%	94.0%	92.9%	93.1%	94.8%
St. Lucie	87.1%	88.3%	87.8%	89.3%	89.0%
Florida	87.7%	88.3%	88.4%	88.0%	89.4%

Source: FL Health Charts – Birth Count Query System

Pregnant Women Feeling Depressed by County

County	2017	2018	2019	2020	2021
Alachua	13.4%	12.2%	15.4%	15.3%	14.6%
Clay	11.9%	14.4%	13.9%	13.9%	13.9%
Escambia	17.4%	18.5%	18.3%	17.6%	16.7%
Leon	14.8%	13.8%	16.1%	17.0%	16.0%
Okaloosa	14.8%	12.8%	14.2%	13.4%	11.8%
St. John	12.6%	12.9%	11.9%	11.4%	12.2%
St. Lucie	9.9%	9.7%	10.9%	10.2%	8.6%
Florida	13.2%	13.0%	13.3%	12.2%	12.4%

Source: FL Health Charts – Healthy Start Prenatal Screen Report System

Pregnant Women Feeling Alone by County

County	2017	2018	2019	2020	2021
Alachua	8.8%	7.5%	9.3%	9.4%	9.0%
Clay	7.8%	7.5%	8.5%	9.3%	9.3%
Escambia	10.9%	11.8%	12.1%	11.2%	9.5%
Leon	10.0%	10.3%	9.5%	11.7%	10.8%
Okaloosa	10.6%	8.6%	8.5%	8.0%	7.3%
St. John	8.3%	7.2%	7.5%	6.5%	8.9%
St. Lucie	5.3%	5.4%	6.7%	6.9%	5.0%
Florida	8.4%	8.2%	8.4%	7.7%	7.8%

Source: FL Health Charts – Healthy Start Prenatal Screen Report System

Support

Child Maltreatment Investigations Rate by County

County	2017-18	2018-19	2019-20	2020-21	2021-22
Alachua	9.2	8.8	7.7	7.3	
Clay	6.3	6.0	5.0	4.9	
Escambia	9.1	8.2	6.8	6.8	
Leon	6.7	6.8	5.9	5.9	
Okaloosa	10.1	7.9	7.0	7.2	
St. John	4.6	4.4	3.9	4.6	
St. Lucie	7.0	6.4	5.1	5.3	
Florida	6.2	5.8	5.0	4.8	

Source: Florida Department of Children and Families – Child Welfare Dashboard

Children with Verified Maltreatment Investigations by County

County	2017-18	2018-19	2019-20	2020-21	2021-22
Alachua	0.6%	0.6%	0.6%	0.7%	
Clay	1.0%	1.1%	1.1%	1.0%	
Escambia	1.7%	1.7%	1.4%	1.5%	
Leon	0.7%	0.7%	0.7%	0.7%	
Okaloosa	1.4%	1.4%	1.1%	0.9%	
St. John	0.8%	0.8%	0.6%	0.6%	
St. Lucie	1.0%	0.8%	0.7%	0.5%	
Florida	0.9%	0.8%	0.7%	0.6%	

Source: Florida Department of Children and Families – Child Welfare Dashboard

Domestic Violence Rate by County

County	2017	2018	2019	2020	2021
Alachua	586.9	543.9	595.2	604.6	
Clay	353.4	393.8	394.9	394.9	
Escambia	762.6	688.4	724.6	670.7	
Leon	600.6	550.7	716.7	827.4	
Okaloosa	638.9	768.1	618.3	734.5	
St. John	329.5	301.2	245.3	263.8	
St. Lucie	452.9	491.0	474.5	511.1	
Florida	522.2	503.4	496.5	493.7	

Source: Florida Department of Law Enforcement – Crime in Florida, Uniform Crime Report

Hospitalizations for Non-Fatal Injuries by Year

Age Group	2017	2018	2019	2020	2021
<1	18	17	12	8	
1-4	37	39	45	47	
5-9	33	30	29	19	
10-14	36	40	39	21	
15-19	89	94	88	40	
Total	213	220	213	135	

Child Deaths by Age Group and Year

Age Group	2017	2018	2019	2020	2021
<1	22	30	27	24	27
1-4	4	4	2	4	4
5-9	1	2	2	4	0
10-14	2	2	2	4	8
15-19	8	7	4	7	10
Total	37	45	37	43	49

Source: FL Health Charts – Death Count Query System

Top Causes of Death in Children:

- **80** Perinatal Period Conditions
- **54** External Causes
 - **15** Homicide (12 by Firearms / 3 Other)
 - **15** Motor Vehicle Crashes
 - **13** Suicide
- **23** Congenital & Chromosomal Anomalies

Youth Arrest Rate by County

County	2016-17	2017-18	2018-19	2019-20	2020-21
Alachua	24.4	21.3	23.6	18.3	14.6
Clay	13.2	12.2	10.6	7.4	6.5
Escambia	36.6	38.2	34.9	30.5	20.6
Leon	22.9	21.4	19.3	14.9	11.8
Okaloosa	31.3	31.1	30.0	24.4	26.1
St. John	11.0	7.8	8.3	8.5	5.8
St. Lucie	22.8	22.1	24.7	17.4	14.1
Florida	18.9	17.6	16.3	13.1	9.7

Source: Florida Department of Law Enforcement – Crime in Florida, Uniform Crime Report

Violent Crime Rate by County

County	2017	2018	2019	2020	2021
Alachua	634.3	686.6	661.9	748.9	
Clay	278.5	298.7	255.2	258.3	
Escambia	554.0	539.3	550.3	597.3	
Leon	649.9	616.4	572.6	600.6	
Okaloosa	373.7	361.9	367.5	323.0	
St. John	187.1	153.6	157.0	141.7	
St. Lucie	240.4	263.5	262.7	257.4	
Florida	416.2	390.8	381.3	383.3	

Source: Florida Department of Law Enforcement – Crime in Florida, Uniform Crime Report

References:

Children's Trust of Alachua County, "Gap Analysis of Child Well-Being Indicators and Program Support." (April 10, 2019).

https://www.childrenstrustofalachuacounty.us/sites/default/files/fileattachments/communications/page/6013/csab_gap_analysis_of_child_well-being_indicators_and_program_support_with_cover_letter.pdf

Well Florida Council. (2020). [Alachua County Community Health Needs Assessment](#).

Needs Assessment recently completed by other CSCs:

- [Leon County](#)
- [Escambia County](#)
- [Duval County](#)