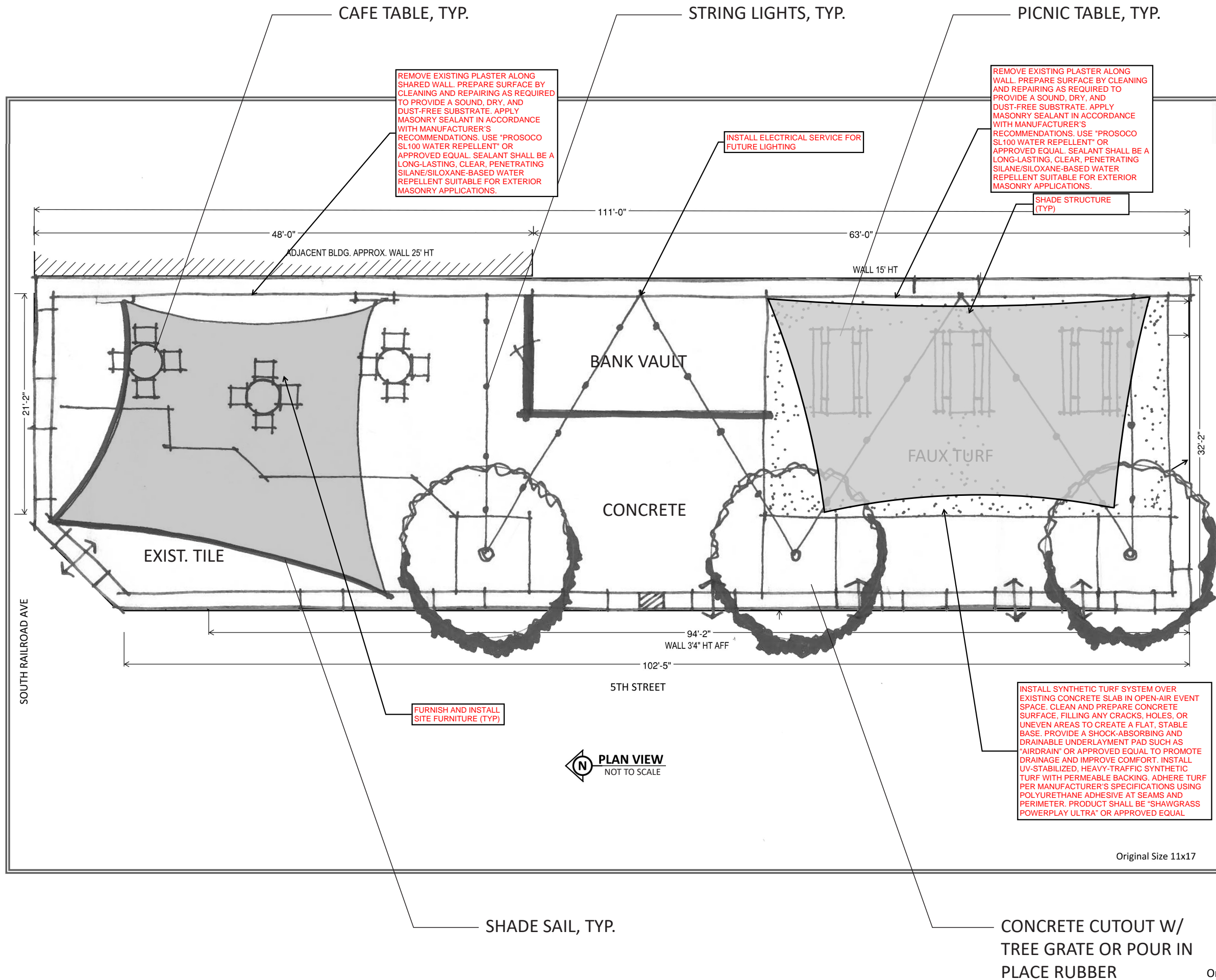


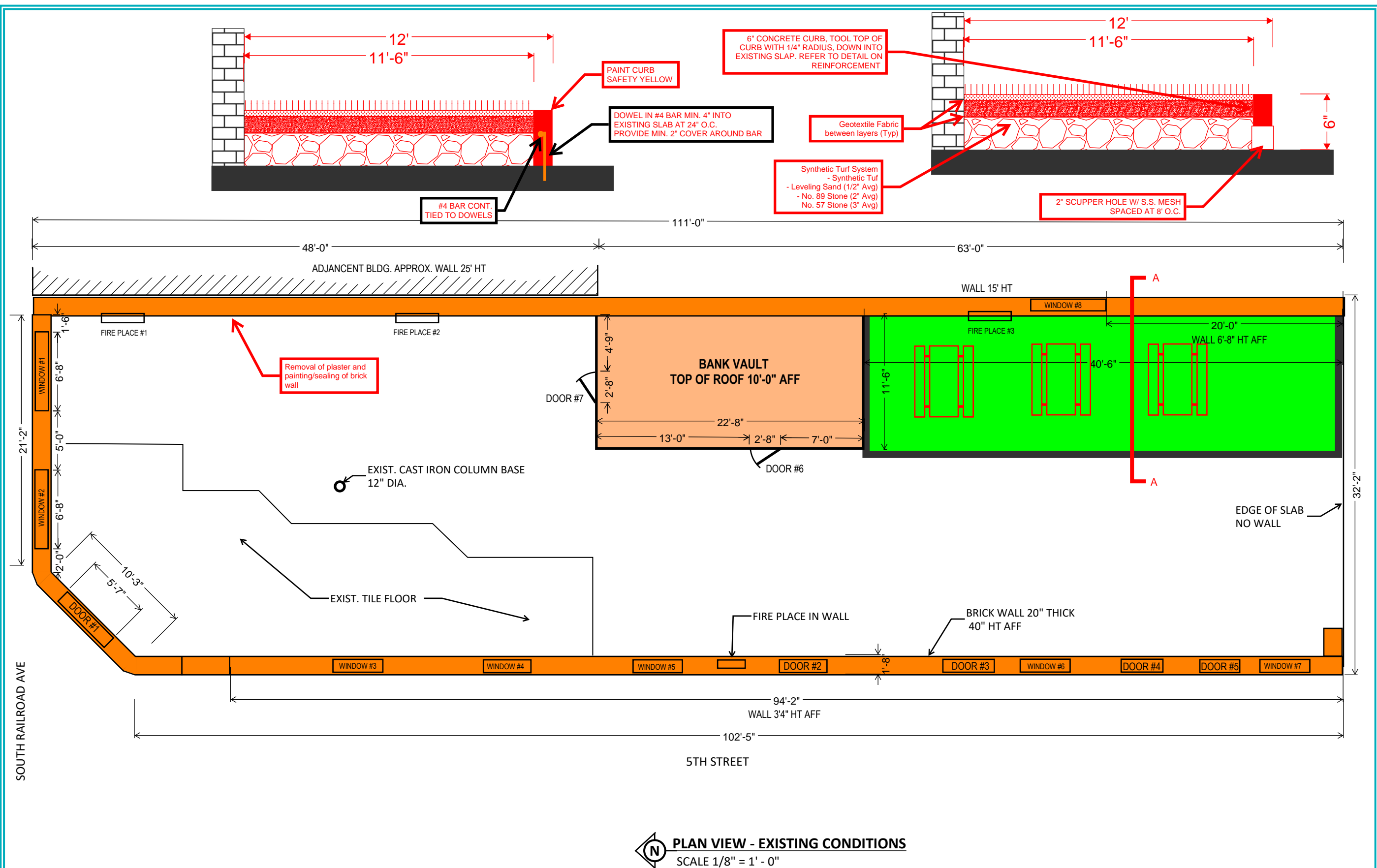
CITY OF CHIPLEY, FLORIDA
MONGOVEN BLDG - PHASE 2: CO #3
CHIPLEY, FLORIDA

EXISTING
CONDITIONS

PROJ NO. CHI22HR
DATE 10-29-25
DRAWN BEM
CHECK _____
REVISION _____
REV. DATE _____

CO3-1





DHM

DAVID H. MELVIN, INC.
CONSULTING ENGINEERS

4428 Lafayette Street
Marianna, FL 32446
Phone: (850) 482-3045
www.melvineng.com

EB-0005637
LC-0000277

CITY OF CHIPLEY, FLORIDA
MONGOVEN BLDG - PHASE 2: CO #3
CHIPLEY, FLORIDA

EXISTING
CONDITIONS

PROJ NO. CHI22HR
DATE 10-29-25
DRAWN BEM
CHECK
REVISION
REV. DATE

CO3-2