

# Mecklenburg County GIS



W. Academy Lane  
(SPEED LIMIT 25 MPH)

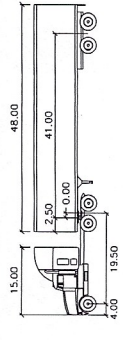
TO HALIFAX CO./LUNEBURG CO.

N. Main Street  
Rte. 47/49 (SPEED LIMIT 35 MPH)

N. Main Street  
Rte. 47/49 (SPEED LIMIT 35 MPH)

TO BEDFORD  
WB-62  
ASST 2004 105

DOD Street  
(SPEED LIMIT 25 MPH)



**VDOT**

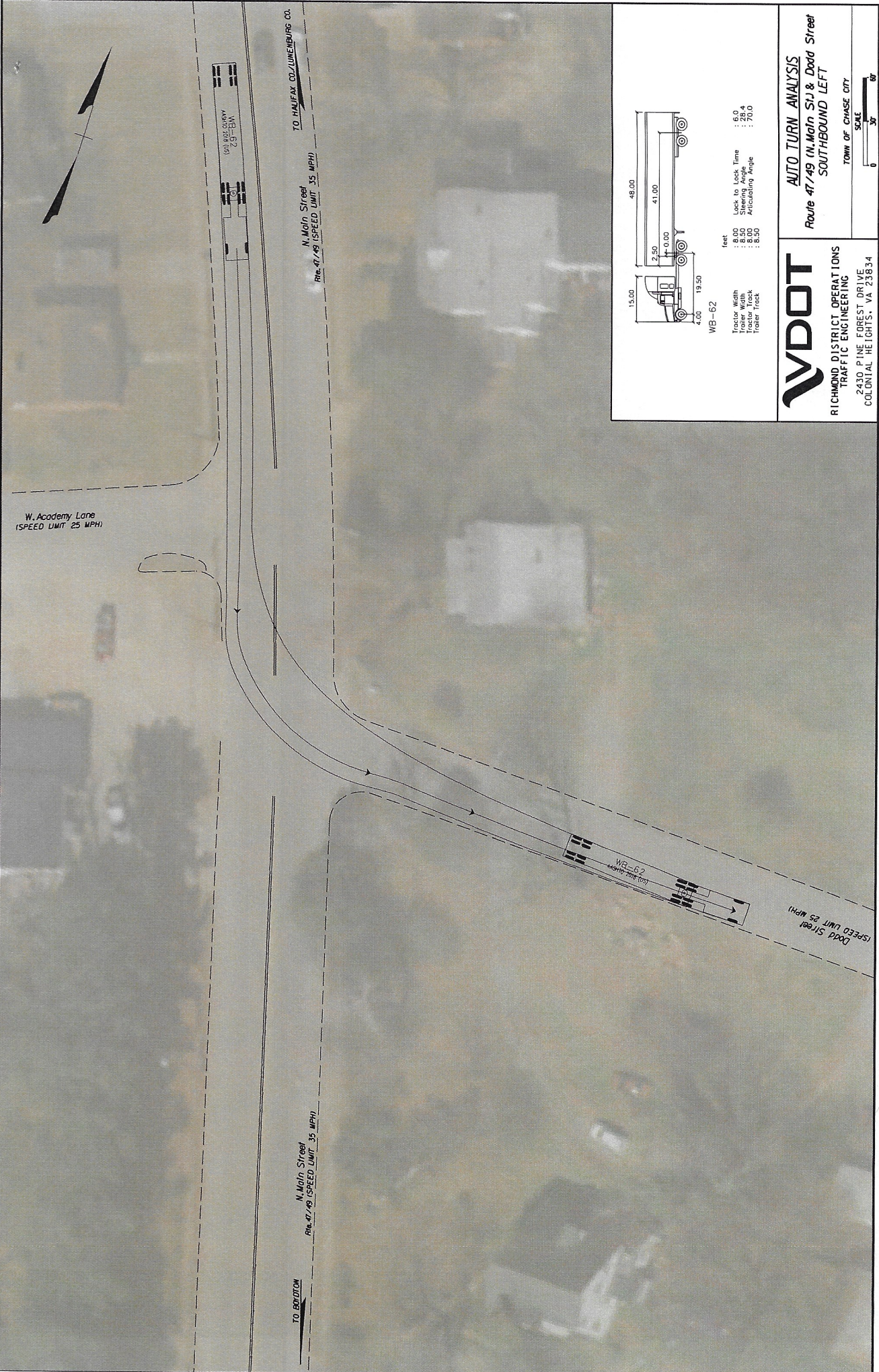
RICHMOND DISTRICT OPERATIONS  
TRAFFIC ENGINEERING  
2430 PINE FOREST DRIVE  
COLONIAL HEIGHTS, VA 23183

**AUTO TURN ANALYSIS**

Route 47/49 (N. Main St) & Dod Street  
NORTHBOUND RIGHT

TOWN OF CHASE CITY

SCALE  
0 30 60



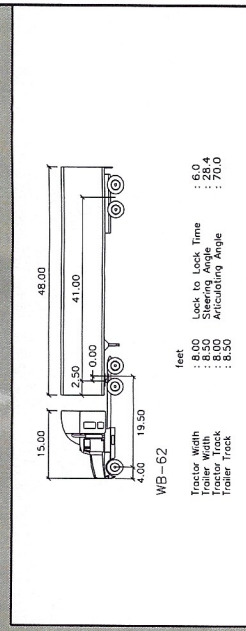
W. Academy Lane  
(SPEED LIMIT 25 MPH)

N. Main Street  
Rte. 47/49 (SPEED LIMIT 35 MPH)

N. Main Street  
Rte. 47/49 (SPEED LIMIT 35 MPH)

WB-62  
NORTH BOUND (S)

Dead Street  
(SPEED LIMIT 25 MPH)



**VDOT**  
 RICHMOND DISTRICT OPERATIONS  
 TRAFFIC ENGINEERING  
 2410 PINE FOREST DRIVE  
 COLONIAL HEIGHTS, VA 23063-4

**AUTO TURN ANALYSIS**  
 Route 47/49 (N. Main St) & Dead Street  
 SOUTHBOUND LEFT  
 TOWN OF CHASE CITY  
 SCALE  
 0 30 60

W. Academy Lane  
(SPEED LIMIT 25 MPH)

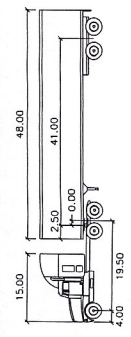
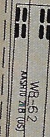
N. Main Street  
Rte. 47/49 (SPEED LIMIT 35 MPH)

TO HALIFAX CO./LUNENBURG CO.

N. Main Street  
Rte. 47/49 (SPEED LIMIT 35 MPH)

TO BOYDTON

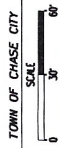
Dodd Street  
(SPEED LIMIT 25 MPH)



WB-62  
feet:  
Tractor Width : 6.00  
Trailer Width : 4.00  
Trailer Length : 19.50  
Lock to Lock Time : 6.0  
Steering Angle : 26.4  
Articulating Angle : 76.0

**VDOT**  
RICHMOND DISTRICT OPERATIONS  
TRAFFIC ENGINEERING  
2430 PINE FOREST DRIVE  
COLONIAL HEIGHTS, VA 23064

**AUTO TURN ANALYSIS**  
Route 47/49 (N. Main St) & Dodd Street  
WESTBOUND LEFT



W. Academy Lane  
(SPEED LIMIT 25 MPH)

N. Main Street  
Rte. 47/49 (SPEED LIMIT 35 MPH)

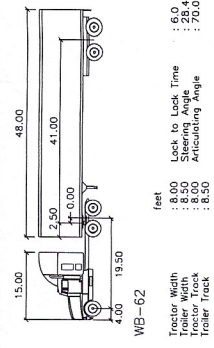
TO BOYDTON

N. Main Street  
Rte. 47/49 (SPEED LIMIT 35 MPH)

TO HALIFAX CO./LUNEBURG CO.

WB-62  
AASHO 2010 (S)

Dodd Street  
(SPEED LIMIT 25 MPH)



**VDOT**  
 RICHMOND DISTRICT OPERATIONS  
 TRAFFIC ENGINEERING  
 2430 PINE FOREST DRIVE  
 COLONIAL HEIGHTS, VA 23834

**AUTO TURN ANALYSIS**  
 Route 47/49 (N. Main St) & Dodd Street  
 WESTBOUND RIGHT  
 TOWN OF CHASE CITY

