



Parcel Line Table		
Line #	Bearing	Length
L1	N42° 27' 56"E	9.94'
L2	N16° 29' 15"E	445.91'
L3	S87° 08' 35"E	198.73'
L4	S3° 46' 47"W	72.57'
L5	S87° 18' 10"E	40.07'
L6	S3° 47' 49"W	146.89'
L7	S88° 02' 51"E	245.66'
L8	N2° 28' 35"E	143.58'
L9	S87° 18' 10"E	358.23'

Parcel Line Table		
Line #	Bearing	Length
L10	S8° 09' 57"W	99.70'
L11	N88° 45' 40"E	626.13'
L12	S9° 13' 26"W	122.39'
L13	S9° 06' 52"W	361.05'
L14	S9° 06' 52"W	319.33'
L15	N42° 27' 56"E	255.73'
L16	S3° 46' 47"W	521.53'
L17	N3° 48' 24"E	113.88'

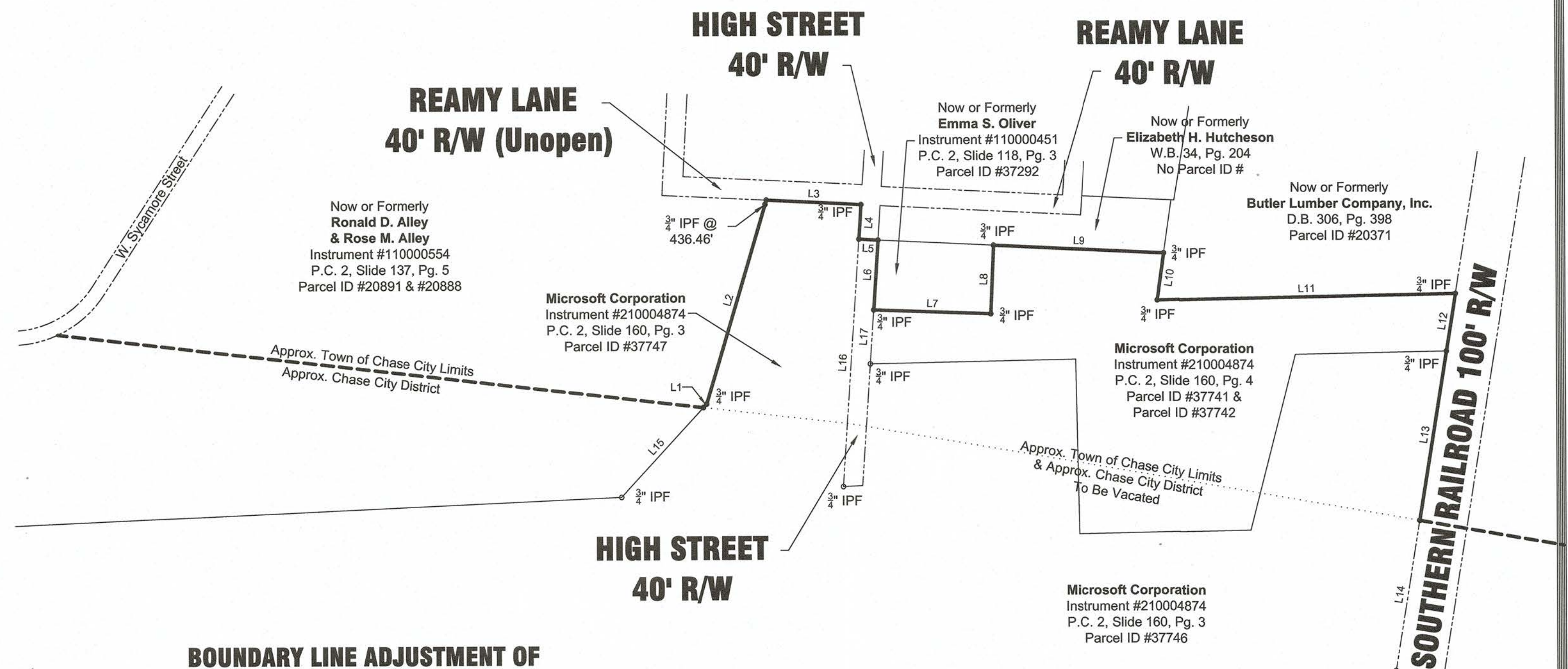
NOTE:
This boundary line adjustment is approved by Mecklenburg County, Va and the Town of Chase City, Va.

Mecklenburg County, Va. Date
Subdivision Agent

Town of Chase City, Va. Date
Subdivision Agent

NOTES:
1) The new adjusted Town and District boundary lines are shown hereon as bold lines.
2) Metes and bounds shown hereon are from a survey completed by this firm dated July 7, 2021.

LEGEND:
EXP= Existing Pipe
IPF= Iron Pin Found
D.B.= Deed Book
W.B.= Will Book
P.B.= Plat Book
R/W= Right-of-Way



**BOUNDARY LINE ADJUSTMENT OF
THE TOWN OF CHASE CITY LIMITS
& THE CHASE CITY DISTRICT LIMITS
Located in THE TOWN OF CHASE CITY
& THE CHASE CITY DISTRICT,
MECKLENBURG COUNTY, VIRGINIA**

Surveyor's Certificate

I hereby certify that this current boundary survey, to the best of my knowledge and belief, is correct and complies with the Minimum Procedures and Standards established by the Virginia State Board of Architects, Professional Engineers, Land Surveyors and Certified Landscape Architects.

The property shown hereon was surveyed without the benefit of a title report and does not necessarily reflect all encumbrances on the property.



SCALE: 1" = 200'
DATE: December 7, 2021
FILE: 51321ADJUST-NB-L

B & B Consultants, Inc.
Engineers - Surveyors - Planners - Lab Analysts
706 Hamilton Boulevard, South Boston, VA 24592
Phone: (434) 572-3251