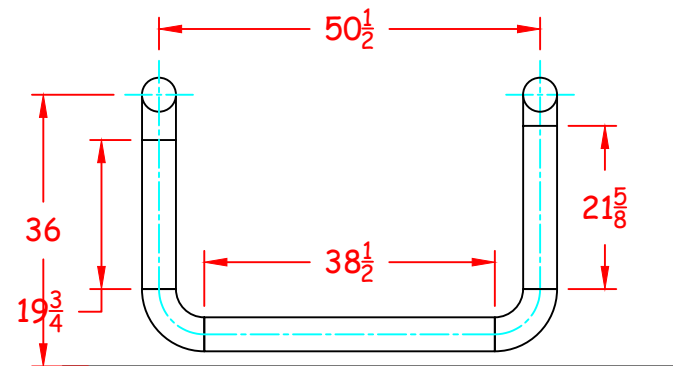
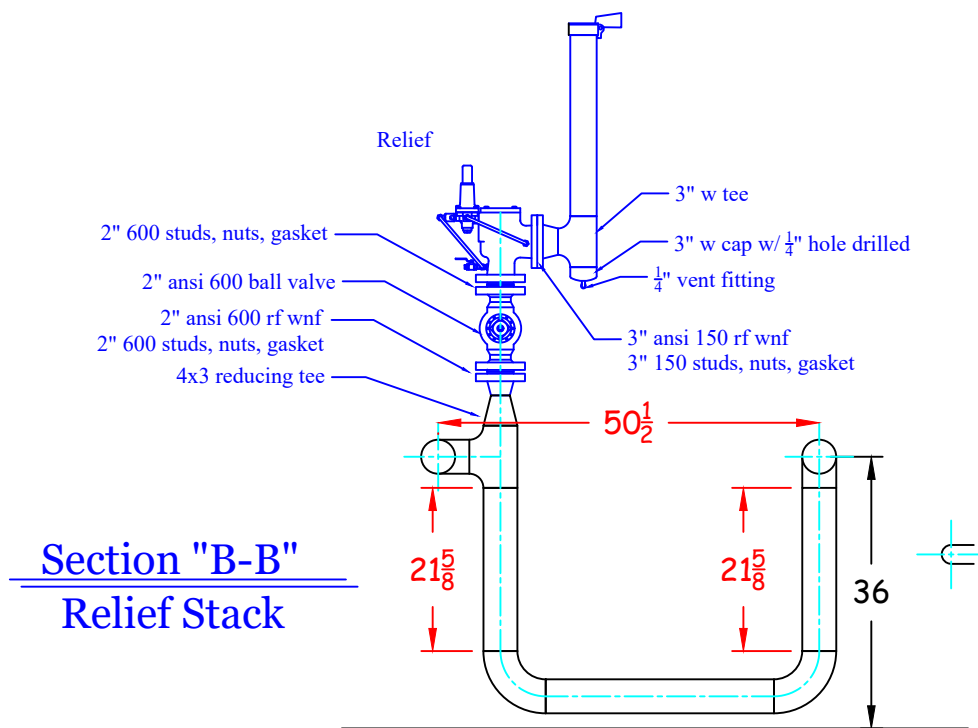


**Section "A-A"**  
**Inlet Riser**



**Section "C-C"**  
**Outlet Riser**



**Section "B-B"**  
**Relief Stack**

Relief: 2x3 FlowSafe F7000  
Set at 40 psig  
Q = 187.98  
Set at 30 psig  
Q = 152.76 mcfh

**Information for Regulators modified for Town of Century Gate**

REGS 1 and 2: 2" x 1" MOONEY FG 53-35 ANSI 600 RFFE, 35% Throttle Set @ 750 psig (w) / 28 psig (m) @ 900 psig inlet, Q <sub>w</sub> = 129.4 mcfh @ 900 psig inlet, Q <sub>m</sub> = 128.4 mcfh @ 800 psig inlet, Q <sub>w</sub> = 77.4 mcfh @ 800 psig inlet, Q <sub>m</sub> = 114.9 mcfh Q <sub>w/o</sub> = 141.02 mcfh	REGS 3 and 4: 2" x 1" MOONEY FG 53-35 ANSI 600 RFFE, 35% Throttle Set @ 25 psig, 750 psig inlet Q = 107.8 mcfh Q <sub>w/o</sub> = 130.05
---	--



PPC / Town of Century Custody Transfer  
US 29 Century, FL

October 8, 2020

nts

Sheet 3 of 3