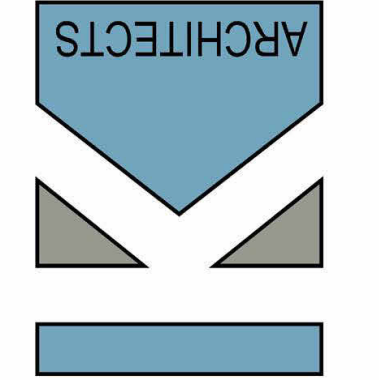


1 Basement - proposed
1/4" = 1'-0"

Progress Drawings



KW Architects
Kristi Kenney, RA
PO Box 404
Wells, Maine 04090
(207) 332-9199



9 Leach Hill Road
Casco, Maine

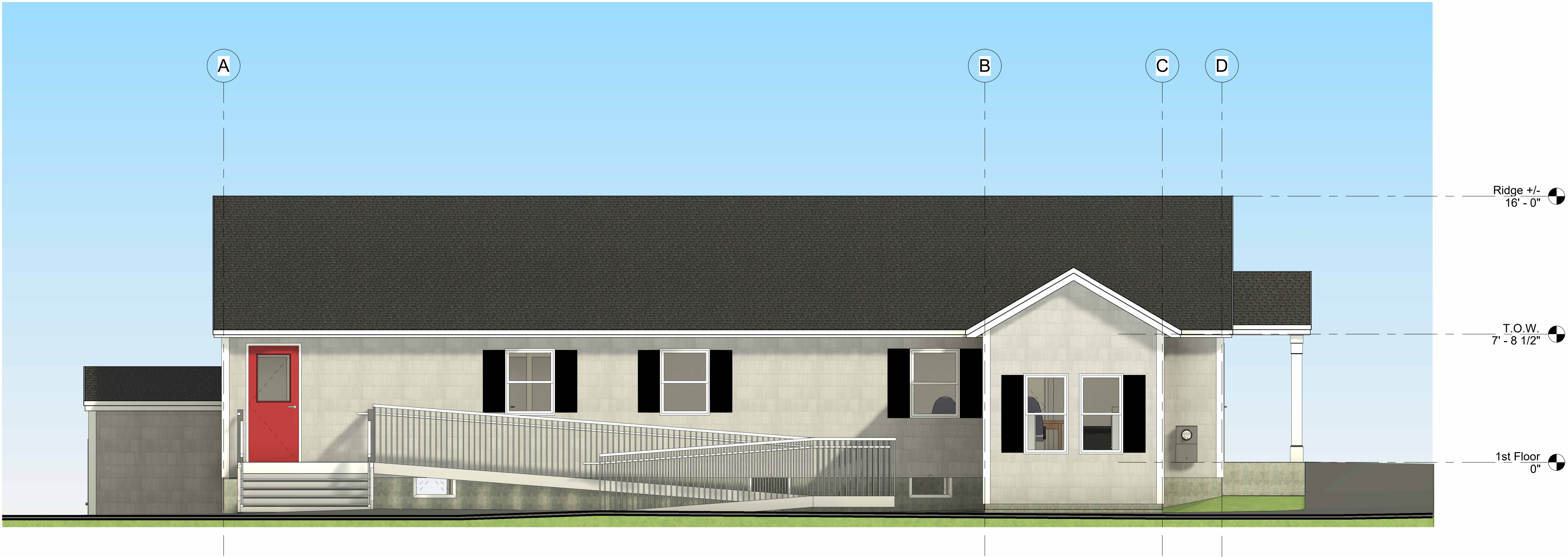
REVISIONS		
#	Date	Description

Date:	03/14/25
Project #	241120
Drawn By:	AEP
Checked By:	KK
Drawing Scale	1/4" = 1'-0"

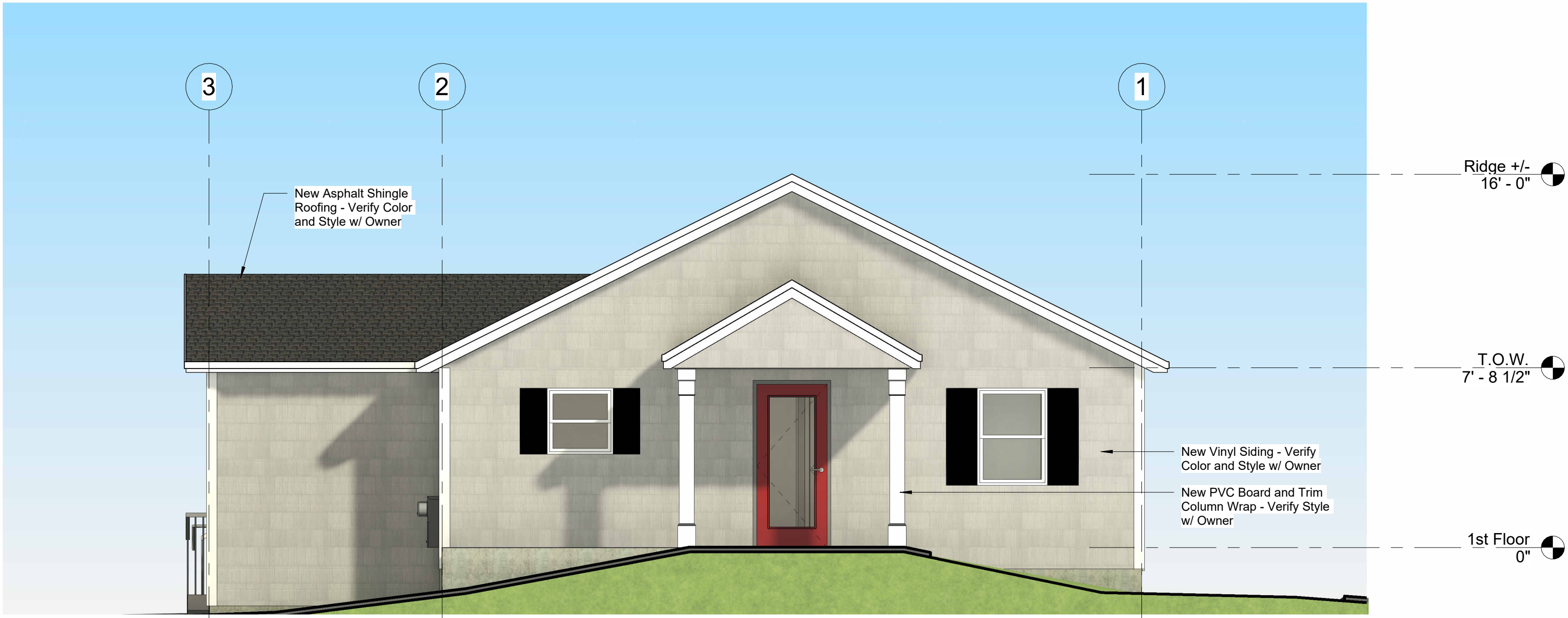
SHEET TITLE
Basement Plan

A0

© COPYRIGHT 2025
Reproduction or reuse of this document without
written permission of KW Architects is prohibited



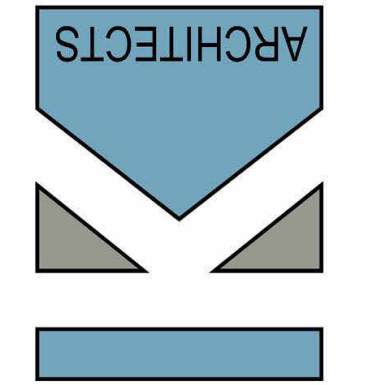
② South Elevation - Proposed
1/4" = 1'-0"



① Front Elevation - Proposed
1/4" = 1'-0"

Progress Drawings

KW Architects
Kristi Kenney, RA
PO Box 404
Wells, Maine 04090
(207) 332-9199



9 Leach Hill Road
Casco, Maine

REVISIONS		
#	Date	Description

Date:	03/14/25
Project #	241120
Drawn By:	AEP
Checked By:	KK
Drawing Scale	1/4" = 1'-0"

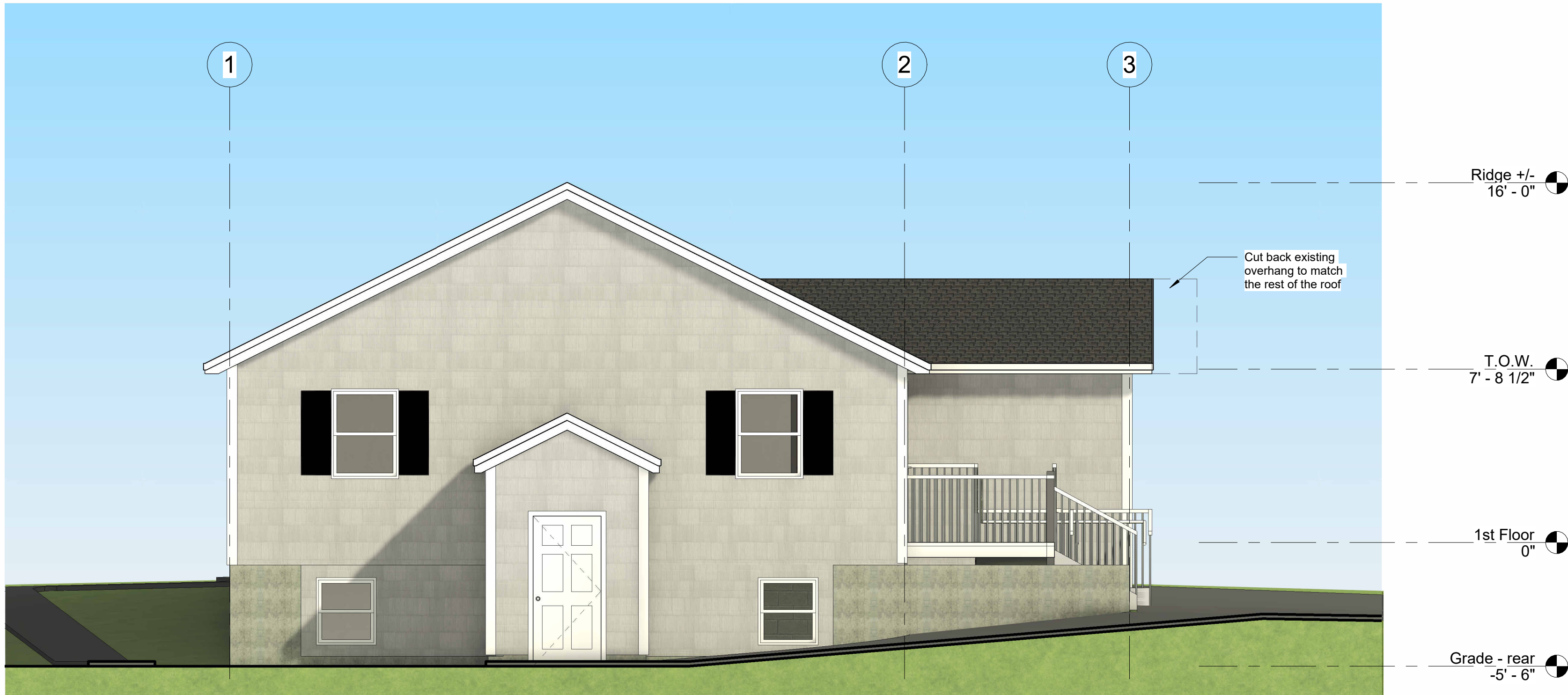
SHEET TITLE
Proposed Elevations

A2

© COPYRIGHT 2025
Reproduction or reuse of this document without
written permission of KW Architects is prohibited



② North Elevation - Proposed
1/4" = 1'-0"



① Rear Elevation - Proposed
1/4" = 1'-0"

Progress Drawings

KW Architects

Kristi Kenney, RA
PO Box 404
Wells, Maine 04090
(207) 332-9199

ARCHITECTS

9 Leach Hill Road
Casco, Maine

REVISIONS		
#	Date	Description

Date:	03/14/25
Project #	241120
Drawn By:	AEP
Checked By:	KK
Drawing Scale	1/4" = 1'-0"

SHEET TITLE
Proposed Elevations

A3

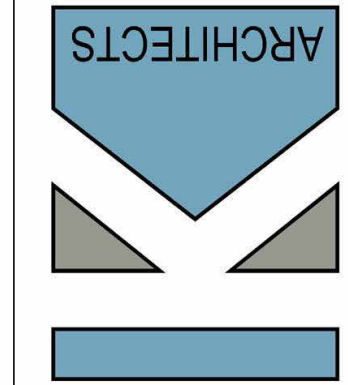


① 3D View 1
12" = 1'-0"



② 3D View 2
12" = 1'-0"

KW Architects
Kristi Kenney, RA
PO Box 404
Wells, Maine 04090
(207) 332-9199



9 Leach Hill Road
Casco, Maine

REVISIONS		
#	Date	Description

Date:	03/14/25
Project #	241120
Drawn By:	AEP
Checked By:	KK
Drawing Scale	12" = 1'-0"

SHEET TITLE
3D Views

RI

© COPYRIGHT 2025
Reproduction or Release of this Document Without
Written Permission of KW Architects is Prohibited

Progress Drawings