



Occupancy Legend

- Assembly
- Circulation / RR /Unoccupiable
- Storage / Mech.

Legend

- Unrated Wall
- (1) Hour Rated Wall
- EXIT Exit Sign
- Emergency Light

Occupancy Loads

Number	Name	Area	Occupancy	OLF	Occupant Load
01	Primary Meeting Room	475 SF	Assembly	7	68
02	Meeting Room	293 SF	Assembly	15	20
04	Breakroom	135 SF	Assembly	15	10
Assembly		904 SF			98
03	Entry	36 SF	Circulation / RR /Unoccupiable	0	0
05	Stair	78 SF	Circulation / RR /Unoccupiable	0	0
07	Cl.	11 SF	Circulation / RR /Unoccupiable	0	0
08	ADA RR	78 SF	Circulation / RR /Unoccupiable	0	0
09	RR	42 SF	Circulation / RR /Unoccupiable	0	0
10	RR	43 SF	Circulation / RR /Unoccupiable	0	0
12	Hall	192 SF	Circulation / RR /Unoccupiable	0	0
13	Cl	10 SF	Circulation / RR /Unoccupiable	0	0
14	Cl	11 SF	Circulation / RR /Unoccupiable	0	0
Circulation / RR /Unoccupiable		501 SF			0
06	Storage	94 SF	Storage / Mech.	300	1
11	AV Room	47 SF	Storage / Mech.	300	1
Storage / Mech.		142 SF			2
TOTAL		1546 SF			100

Building Area

Name	Area
1st Floor Area	1907 SF

UPC 2021

Plumbing Fixture Counts for A-3 Occupancy

Total Occupants = 100  
100 / 2 = 50

Water Closets

Male 1: 1-100 Female 2: 26-50

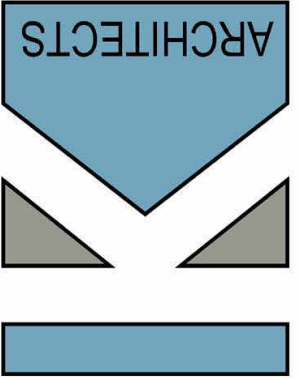
Lavatories

Male 1: 1-100 Female 1: 1-100

Proposed renovations for Town meeting space:

- Remove center wall
- Primary Selectboard Meeting Room (multimedia capacity)
- A/V Room
- ADA restroom x 2
- Secondary meeting room
- Rated walls at stairwell
- Add ADA compliant ramp to rear meeting room landing

KW Architects  
Kristi Kenney, RA  
PO Box 404  
Wells, Maine 04090  
(207) 332-9199



9 Leach Hill Road  
Casco, Maine

REVISIONS

#	Date	Description

Date:	01/30/25
Project #	241120
Drawn By:	AEP
Checked By:	KK
Drawing Scale	1/4" = 1'-0"

SHEET TITLE

Proposed 1st Floor  
Plan - Option 2

AI