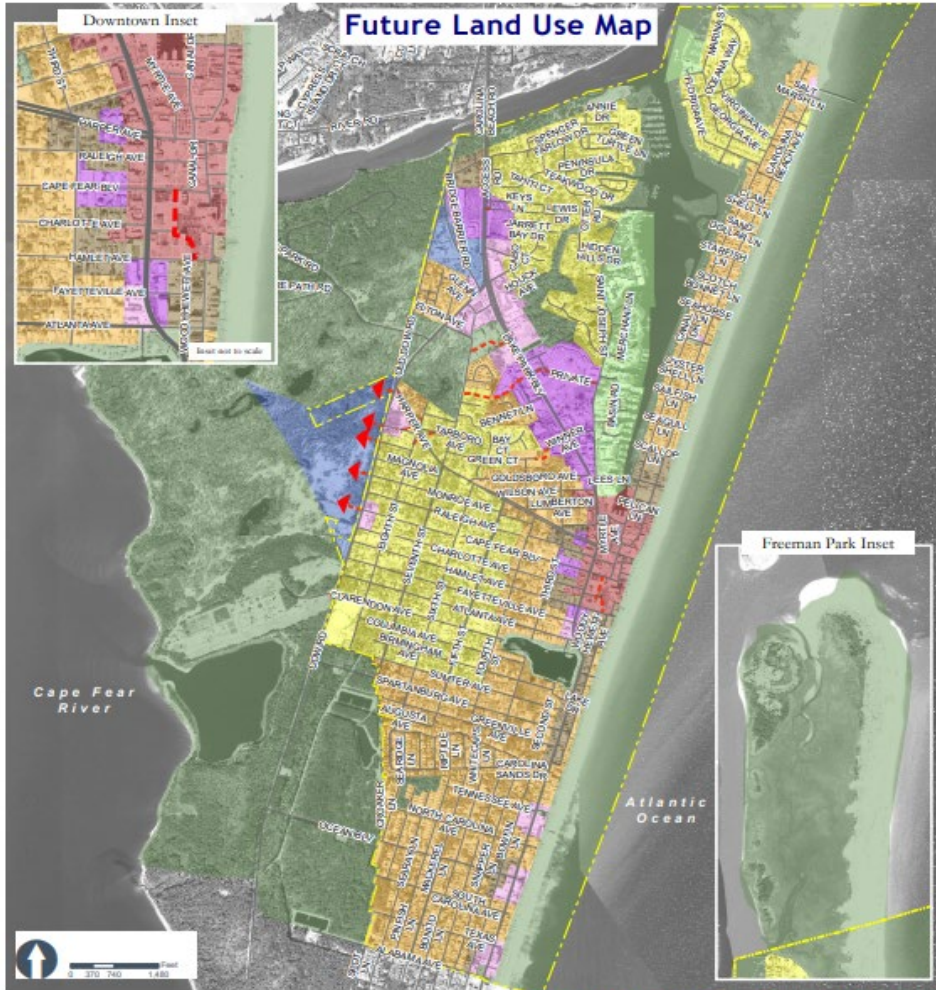


# Future Land Use Map and Character Areas



The Town of Carolina Beach Future Land Use Map.

Certified: November 18, 2020



## Future Land Use Character Area Descriptions



### **Low Density Residential**

Primarily large-lot, single family detached residential such as many of the town's established neighborhoods. Lots are larger than in other areas; usually ~9,000 sq ft and larger. Generally characterized by low traffic, local streets and pedestrian-scale structures. Smaller lots on occasion. Note: Existing, by-right, entitled, higher intensity uses will continue to be supported in LDR areas, including allowances for rebuilding structures.



### **Medium Density Residential**

Mostly medium-sized lots (min. 5,000 sq ft) with primarily single family detached residences. Smaller-scale, attached residences (two-family homes and townhomes) allowed occasionally if contextually compatible. Some small-scale commercial, restaurants, or offices are encouraged at select locations with good access. Low- to medium-traffic streets with pedestrian facilities.



### **High Density Residential / Light Commercial**

Primarily attached, multi-story residential units (up to four stories) located within walking distance of activity centers and/or the waterfront. Structures are condominiums and apartments, and are often used as vacation and rental units. Streets move automobiles and pedestrians efficiently. Limited commercial may also be acceptable at select locations if the surrounding context is appropriate. Some single family structures may also persist.

