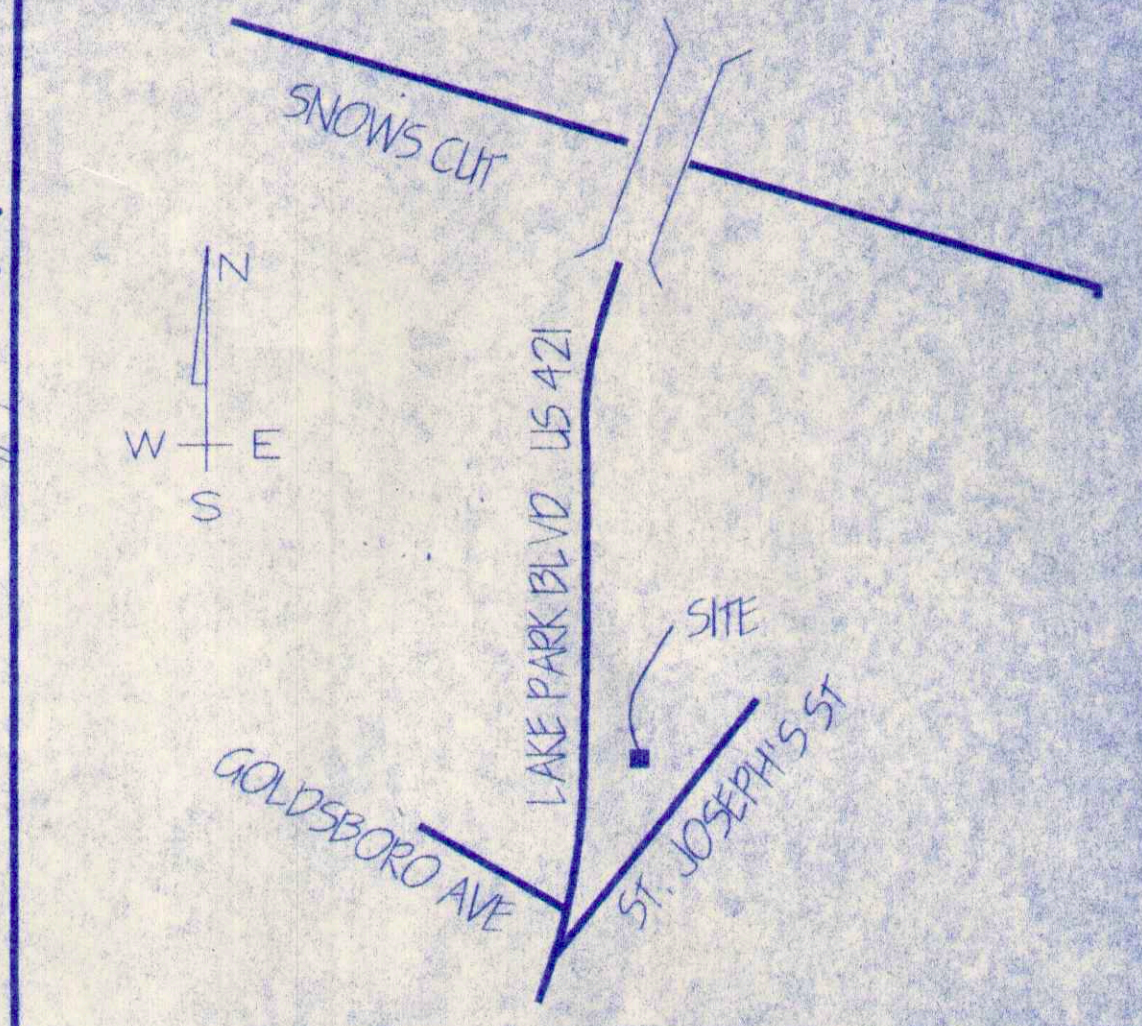


ST. JOSEPH STREET

GOLDSBORO AVE.

LAKE PARK BLVD US HWY 421



LOCATION MAP

SITE SUMMARY

ZONING: B1, REQUESTING CONDITIONAL USE FOR PLANNED BUSINESS USE
 AREA: 0.27 AC.
 BUILDINGS = (3,200 SF)
 PARKING = (3,734 SF)
 WALKS AND PADS = (774 SF)

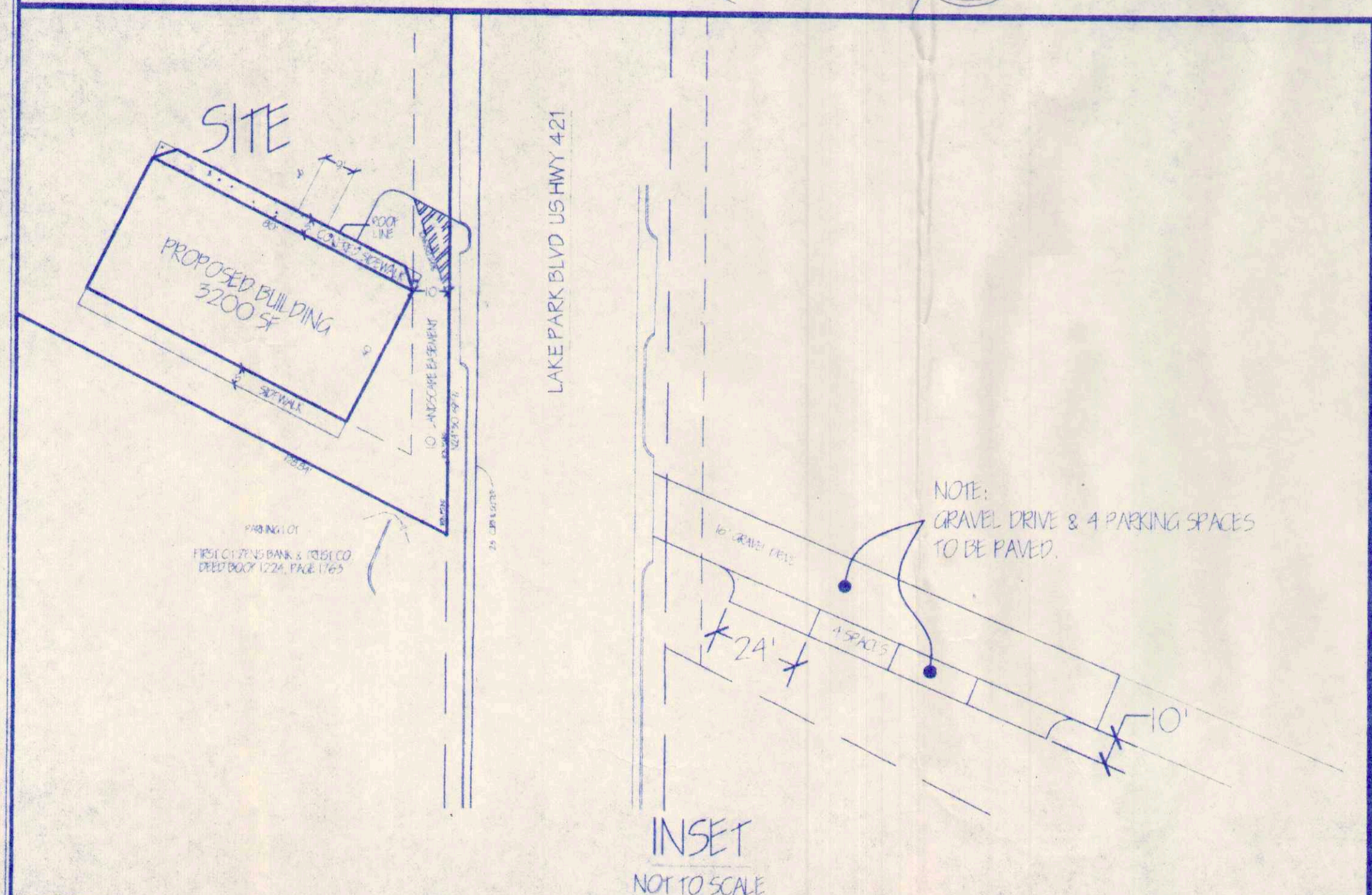
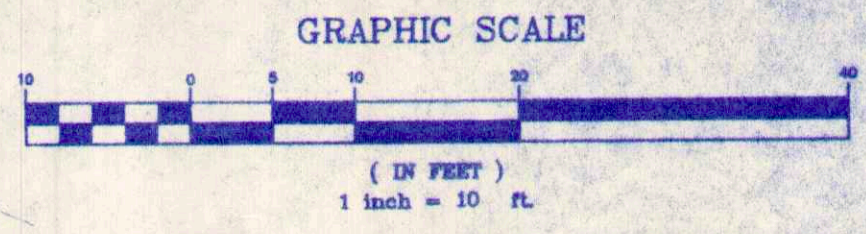
PARKING:
 OFFICE SPACE = 1000 SF @ 1 SPACE PER 300SF = 4 SPACES
 RETAIL = 2,200 SF @ 1 SPACE PER 200SF = 11 SPACES
 TOTAL REQUIRED = 15 SPACES
 TOTAL PARKING:
 ONSITE = 11 SPACES
 OFFSITE = 4 SPACES
 TOTAL PARKING PROVIDED = 15 SPACES

PROPOSED BUILDING
 3200 SF
 FFE = 11.60

GENERAL NOTES

1. SURVEY INFORMATION BY ATLANTIC COAST DESIGNS.
2. ENGINEER TO PROVIDE CONTRACTOR AN ELECTRONIC DRAWING FILE FOR FIELD STAKEOUT PURPOSES.
3. FOR SPECIFIC LOCATION OF SIDEWALK AND SERVICE ENTRANCE TO BUILDINGS SEE ARCHITECTURAL PLANS.
4. ALL IMPROVEMENTS SHALL CONFORM TO THE TOWN OF CAROLINA BEACH STANDARDS.
5. ALL STAKEOUT DIMENSIONS ARE REFERENCED TO EDGE OF PAVEMENT, UNLESS OTHERWISE NOTED.
6. SITE LIGHTING, ELECTRICAL, AND UTILITIES BY OTHERS.
7. NO WETLANDS ON PROPERTY.

NOTE: THIS PLAN IS RELEASED FOR LOCAL GOVERNMENT REVIEW. NOT RELEASED FOR CONSTRUCTION.



INSET NOT TO SCALE

FIRST CITIZENS BANK & TRUST CO.
 DEED BOOK 1224, PAGE 1763

REV. NO.	REVISIONS	DATE

SITE PLAN
 for WINNER PLAZA
 CAROLINA BEACH FEDERAL POINT TOWNSHIP
 NEW HANOVER COUNTY NORTH CAROLINA

CAPE FEAR
Engineering, Inc.
 3963 Market Street
 Wilmington, N.C. 28403 (910) 772-9600

Date: NOV. 1997
 Scale: 1" = 10'
 Drawn: HEK
 Checked: MPA
 Project No: 210-04
 Sheet No: C1 of C4