



305 Chestnut Street
PO Box 1810
Wilmington, NC 28402
Ph: (910) 341-3258
Fax: (910) 341-7801
www.wmpo.org

MEMORANDUM

To: Town of Carolina Beach Technical Review Committee
Date: 4/13/23
Subject: 6th Stop Signs – Emergency Response Route

Comments:

- The Town of Carolina Beach has designated 6th St as part of its Emergency Response Route. This designation allows for the removal of certain traffic controls installed on the street.
- In order to reduce the chances of excessive speeds by motorists, the WMPO would recommend having stop control devices every 4-5 blocks.
- The WMPO recommends modifying the intersection of Hamlet Ave and 6th St from a four-way stop to a two-way stop, favoring trips on 6th St.
- Atlanta Ave and 6th St should remain a two-way stop condition, favoring trips on Atlanta Ave. This intersection is 4 blocks from Cape Fear Blvd.
- Clarendon Ave and 6th St intersection should be modified to favor trips on 6th St. Currently, 6th St has the stop condition and should be switched to Clarendon Ave.
- The WMPO recommends keeping the four-way stop condition for Spartanburg Ave. This intersection is 5 blocks from the stop condition for 6th St at Atlanta Ave.
- There is a stop sign present at the intersection of 6th St and Seafarer Dr that stops traffic on 6th St.
- By having stop conditions for vehicles travelling on 6th St every 4-5 blocks, this would help mitigate excessive speeds that may be seen if there were no stop signs for 6 or more blocks along the straight roadway.

Wilmington Urban Area Metropolitan Planning Organization

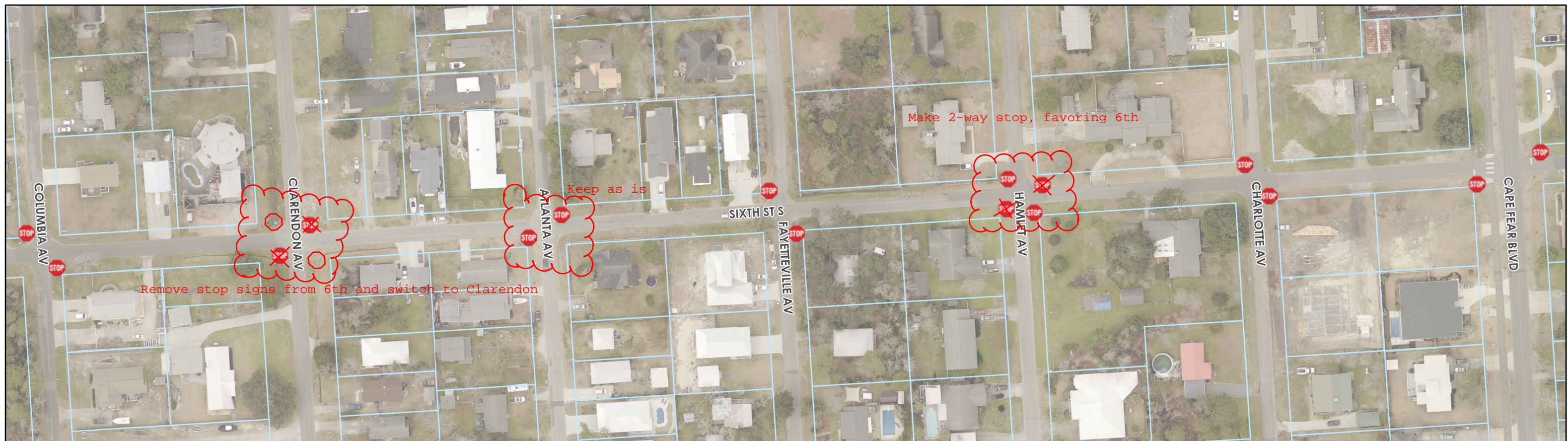


TIP Projects in the Area: N/A

WMPO 2045 Projects: N/A

Carolina Beach CTP: N/A

TIA: N/A



Sixth Street Stop Signs

March 2023

