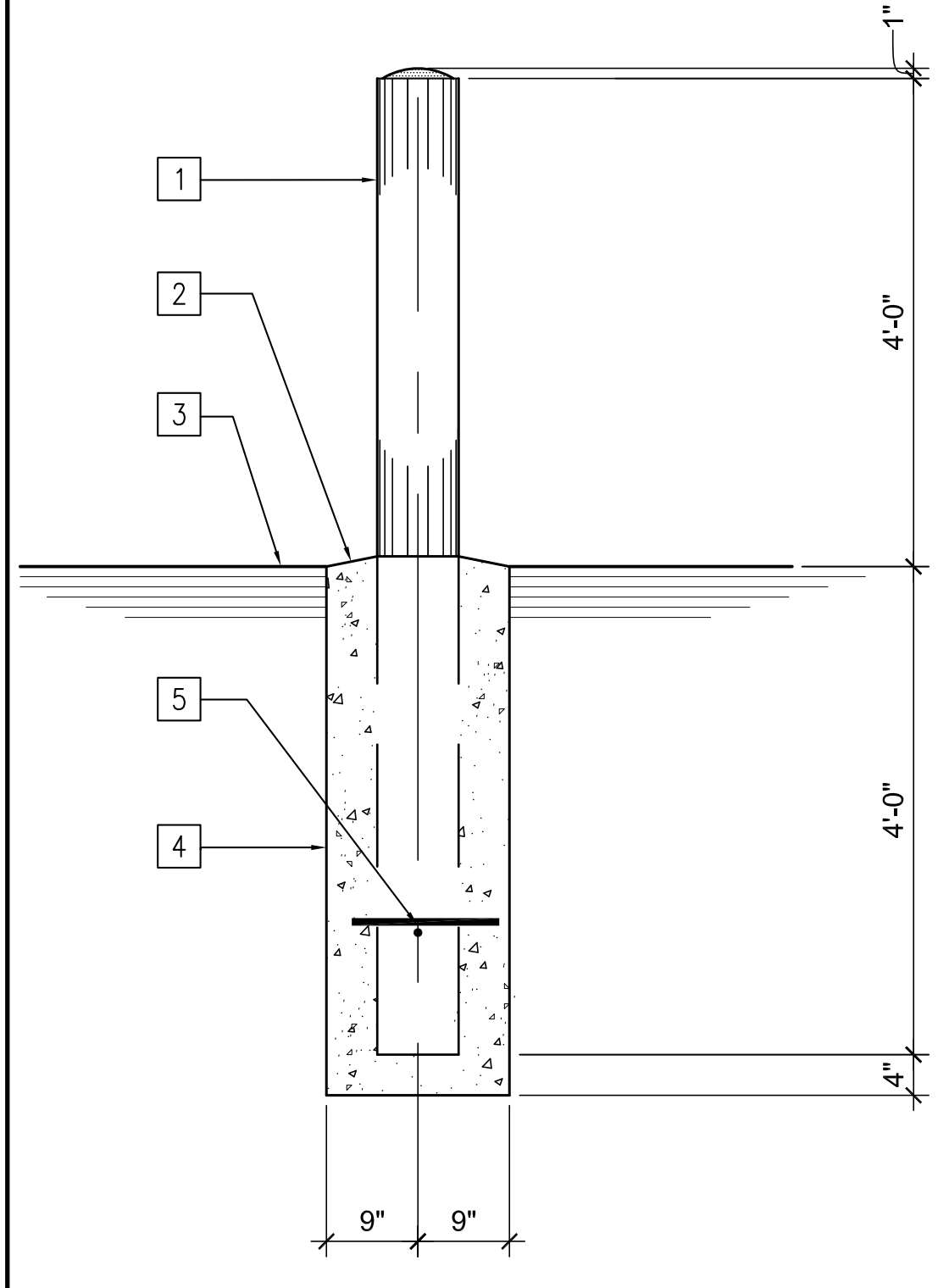


- 1 6" DIA. CONCRETE FILLED STEEL PIPE BOLLARD WITH CONCRETE WASH-PAINTED SAFETY YELLOW. -
- 2 TAPER TOP OF FOOTING FOR POSITIVE DRAINAGE. -
- 3 CONCRETE PAVING - SEE CIVIL DRAWINGS. -
- 4 18" DIA. CONCRETE BASE
- 5 #6 - 14" LONG REBAR EACHWAY THRU PIPE. -



PRELIMINARY
FOR REVIEW ONLY
NOT FOR CONSTRUCTION

Hamlet Bathhouse & Ocean Rescue Facility Carolina Beach, NC

401 North Heritage Street
Kinston, North Carolina 28501
phone: 252-527-1523
web: dunnaldton.com

**DUNN &
DALTON
ARCHITECTS**

Issue Date: 5/17/21
Revisions:

A1.1a

THIS DRAWING IS THE PROPERTY OF DUNN & DALTON, ARCHITECT, P.A. THIS DRAWING IS NOT TO BE COPIED IN WHOLE OR IN PART. THIS DRAWING OR THE INFORMATION HEREON IS NOT TO BE USED ON ANY OTHER PROJECT AND MUST BE RETURNED TO DUNN & DALTON, ARCHITECTS, P.A. UPON REQUEST. COPYRIGHT 2021, DUNN & DALTON, ARCHITECTS, P.A. Project Number: T.C.A-21029

1A
SCALE: 1/4" = 1'-0"

DIMENSION FLOOR PLAN

14A
SCALE: 3/4" = 1'-0"

**CONC. BOLLARD
DETAIL**