

Carolina Beach

A Community Art Initiative



ISLAND
ARTS
COUNCIL

Carolina Beach, North Carolina
Presented to Carolina Beach Town Council · July 2026

AGENDA

1. Project Overview
2. Artist Totems
3. Community Totems & Workshops
4. City Light Posts Flags
5. Approvals Request & Next Steps

Approval Requests

Mosaic Totems

Installation of 3 sites for Mosaic Totems 2026

Carolina Beach
Municipal Docks

Carolina Beach Lake
Park

Carolina Beach Fire
Station



Light Post Flags

2027 CB Art Appreciation Seasonal Light Post Flags with art from IAC members



Carolina Beach Mosaic Totems - Project Overview

The Pleasure Island Arts Council has selected designs for a series of mosaic totems celebrating the beauty, culture, and natural environment of Carolina Beach.



Artist Totems

Two 4-foot tall round posts. Designs wrap completely around the cylinders.



Community Totem

One 6-foot in height post with 4 inch sides.
Designs displayed on all four sides.
Community-created mosaic tiles.



Public Workshops

Held at the Carolina Beach Recreation Center.
Open to all residents.

KEY MESSAGE

These sketches represent the artistic concepts. Final mosaic installations will feature unique tile placement, color variation, texture, and handcrafted details unique to each piece.

Public Art: Mosaic Totems Proposal - specifications:

IAC:

- IAC Finance Committee:
 - Expense of posts, tools, and supplies
 - Budget income from Grant funding - Wilmington Arts Council/NHC Endowment
 - General budget allocation for balance of expenses
- Project management
- Creation of the posts
- Maintenance of the mosaics on the posts after installation

Town of Carolina Beach:

- Council: approval of site placements
- Public Works: placement logistics to ensure the safety and aesthetic beauty of the city
- Manpower: secure installation and grounds maintenance
- Parks & Recreation: community workshops (held gratis) at Recreation Center
- Liability: (transfer ownership to Town of CB) Parks & Recreation

Collaboration:

place making and installation unveiling events

Installation and Locations

6 locations across the island : 3 in CB and 3 in KB
3 posts at each location

Size of the posts at each location:

- 2 artists made: 4 ft. high from the ground up
- 1 community made: 6 ft. high from the ground up

18 total posts projected to be installed during 2026



Concept rendering — final mosaic will feature hand-cut tiles with unique color and texture.

Layers of Sky

Deep and layered blues transition from twilight to sunrise, creating the sense of a changing Kure Beach sky.

Golden Sun Setting

A vibrant golden-orange sun sits at the horizon line, with warm reflections cascading down to the water.

Turtle Procession

Multiple sea turtles are depicted crossing from nesting area to ocean in a flowing, connected composition.

Conservation Symbol

The 'Sea Turtle Nest — Do Not Disturb' sign anchors the bottom, honoring Kure Beach's real-world conservation effort.

Artists

Barb Buckley and Leslie Santilli, Artists

Design Title

Sea Turtle Hatching

Design Statement

- Opaque and glass mosaic tiles
- Hand-cut tile work
- Flowing ocean and sky elements
- Sea turtle imagery throughout
- Mixed textures and embedded materials

Celebrating Kure Beach's iconic natural treasure: the nesting sea turtle population.



Vibrant Sunset

A golden Atlantic sunset rendered in warm orange and deep blue tones



Turtle Journey

Sea turtles traveling between nest and sea in procession



Ocean Reflection

Shimmering reflections across the water's surface



Nesting Area

Protected nesting zone depicted with orange netting motifs



Sand Textures

Embedded sand textures giving tactile dimension to the piece



Do Not Disturb

Iconic sea turtle nesting sign as a conservation symbol

Community Mosaic Totem

Community Participation Project

ABOUT THE COMMUNITY TOTEM

The 6-foot in height with 4 inch sides Community Totem will be created with participation from Carolina Beach residents during public workshops.

DESIGN FEATURES

The four sides of the totem will feature coastal icons:



Smiling Sun



Sea Turtle



Pelican



Dolphin



Palm Tree



Crab



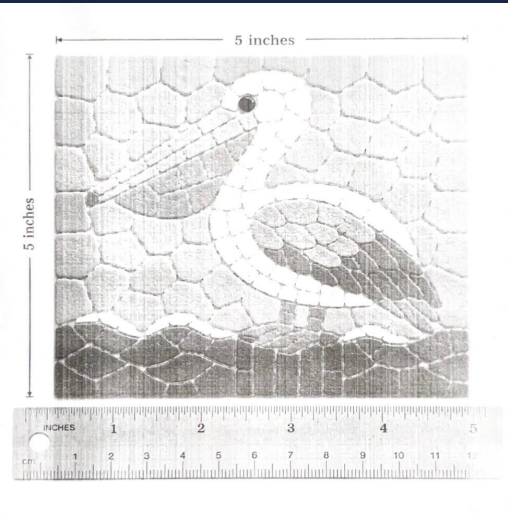
Sea Shell

COMMUNITY CREATIVITY

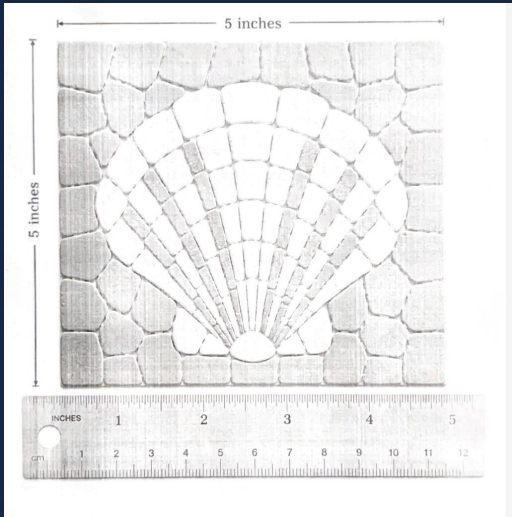
- Create individual mosaic tiles
- Select their own colors
- Contribute unique artistic interpretations
- Become part of a permanent public landmark

Community Totem — Design Templates

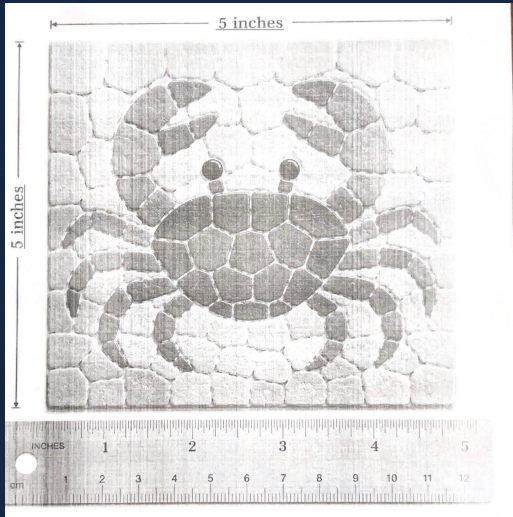
Template concepts for the Community Mosaic Totem. Final mosaics will be handcrafted by community participants and may vary from these sketches.



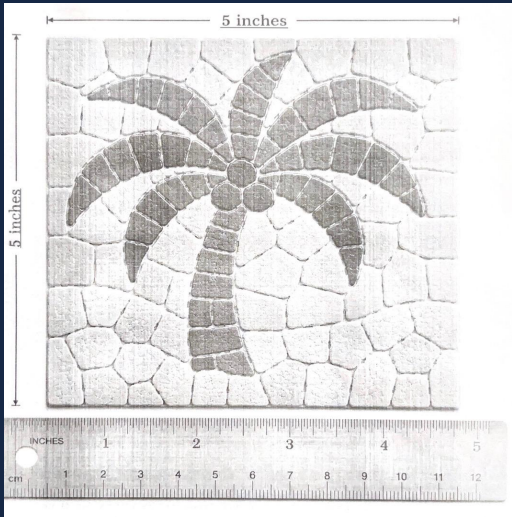
Pelican



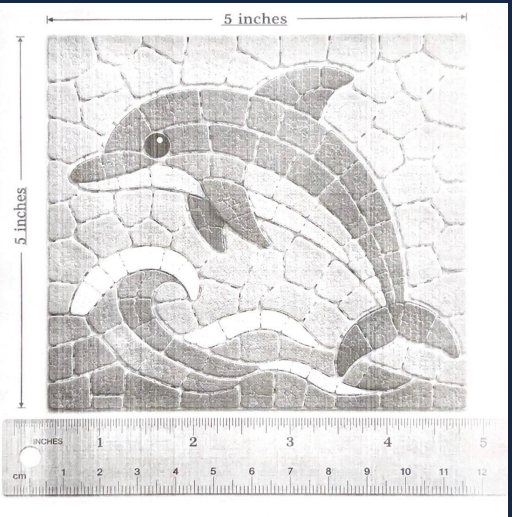
Sea Shell



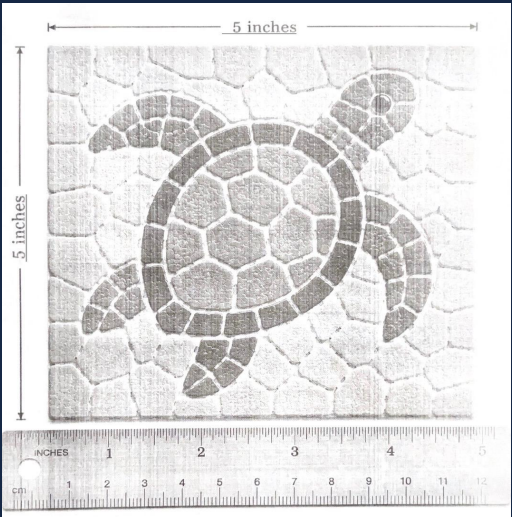
Crab



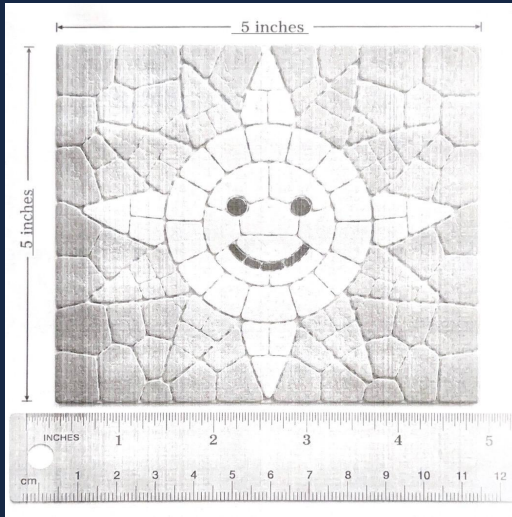
Palm Tree



Dolphin



Sea Turtle



Smiling Sun

Community Workshops

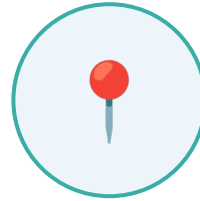
Creating the Community Totem Together

01 Workshop Goals



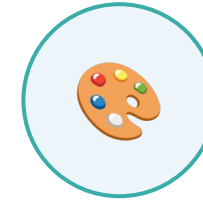
- Engage Carolina Beach residents
- Create a lasting public art piece
- Celebrate local coastal heritage
- Encourage participation for all ages

02 Location



- Carolina Beach Recreation Center
- Guided by local artists

03 Community Involvement



- Learn mosaic tile techniques
- Create custom hand-crafted tiles
- Collaborate with local artists
- Help build a permanent landmark

Every tile created in these workshops becomes a permanent part of Carolina Beach's public art landscape — a contribution that will be enjoyed for generations.

Community Workshop Flyer

Creating the Community Totem Together

This is a draft of the Community Workshop Flyer with the Mosaic Totem info and workshop dates.

It will include the Island Arts Council Logo and website info.

 **Island Mosaic Totems**

2026 Community Project

IAC Artists work with participants to create colorful mosaic totems to be installed around the island. Each site includes 2 artist-made totems and 1 community-made totem.

Workshops will be held throughout the year to create community mosaic totems!

1st Site: CB Lake

Workshops: Community Mosaic Tiles

- 3 Workshops held at Carolina Beach Recreation Center
- Up to 15 participants (Ages 13+, Minors must be accompanied by parent)
- \$15 per person to cover materials
- Your tiles will be on the Community Totem that is part of the public sculpture

Dates will be inserted here time will be inserted here



Scan to Sign-up
Info@IslandArtsCouncil.net

 **THE ENDOWMENT**
NEW HANOVER COMMUNITY ENDOWMENT

 **The Arts Council**
of Wilmington & NHC

Every tile created in these workshops becomes a permanent part of Carolina Beach's public art landscape — a contribution that will be enjoyed for generations.

Mosaic Totem

Questions & Discussion

Pleasure Island Arts Council

PleasureIslandArtsCouncil.org

2027 Seasonal Light Post Flags - Project Overview

- Selected Artwork (for 20 flags) by local artists - reviewed and approved by the Carolina Beach Town Council
- Transfer artwork onto flags meeting the Town of Carolina Beach's specifications (approx. 24"x48", 30"x60")
- Light post flags to be hung by Town of Carolina Beach's manpower - Lake Park Blvd and business district
- Cost of flag printing/production all by Island Arts Council
- Upon removal of flags, Island Arts Council takes possession for a public sale to partially fund next year's flags

Seasonal: Spring/Fall - Months of celebrating our Island's local art with support from the Town of Carolina Beach

- Supporting our local artists: Each flag acknowledges, in small print, the artist's name
- A collaboration with the city and Island Arts Council as we provide visual traffic focus for enrichment of the local arts and culture
- The beauty of art will flow from the light posts and keep the community and visitors engaged in our mission of developing our island as a regional arts destination

Light Post Flags

Questions & Discussion

Pleasure Island Arts Council

PleasureIslandArtsCouncil.org

Island Arts Council requests your approval of the two proposed projects:

Installation of 3 sites for Mosaic Totems 2026

2027 CB Art Appreciation Seasonal Light Post Flags with art from IAC members

**Carolina Beach
Municipal Docks**

**Carolina Beach Lake
Park**

**Carolina Beach Fire
Station**

