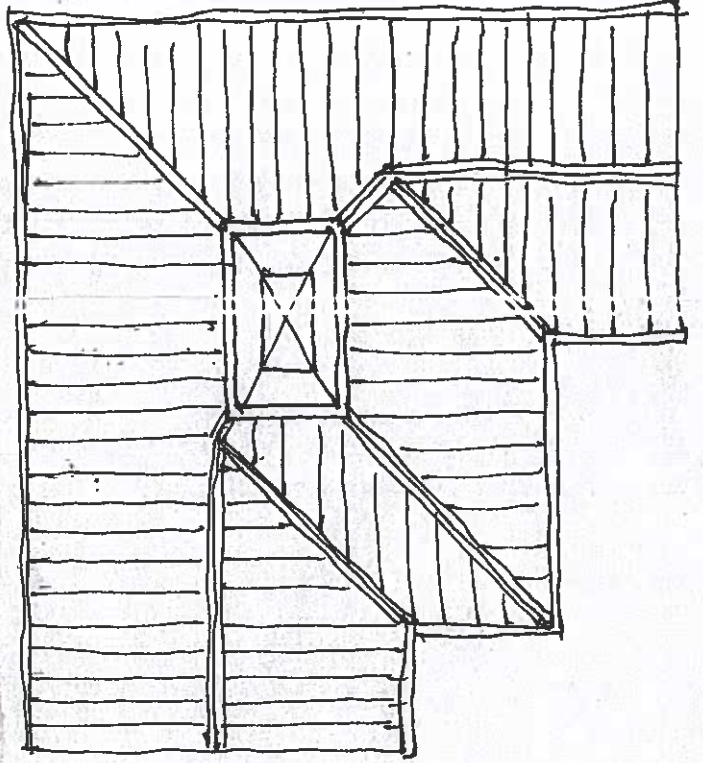
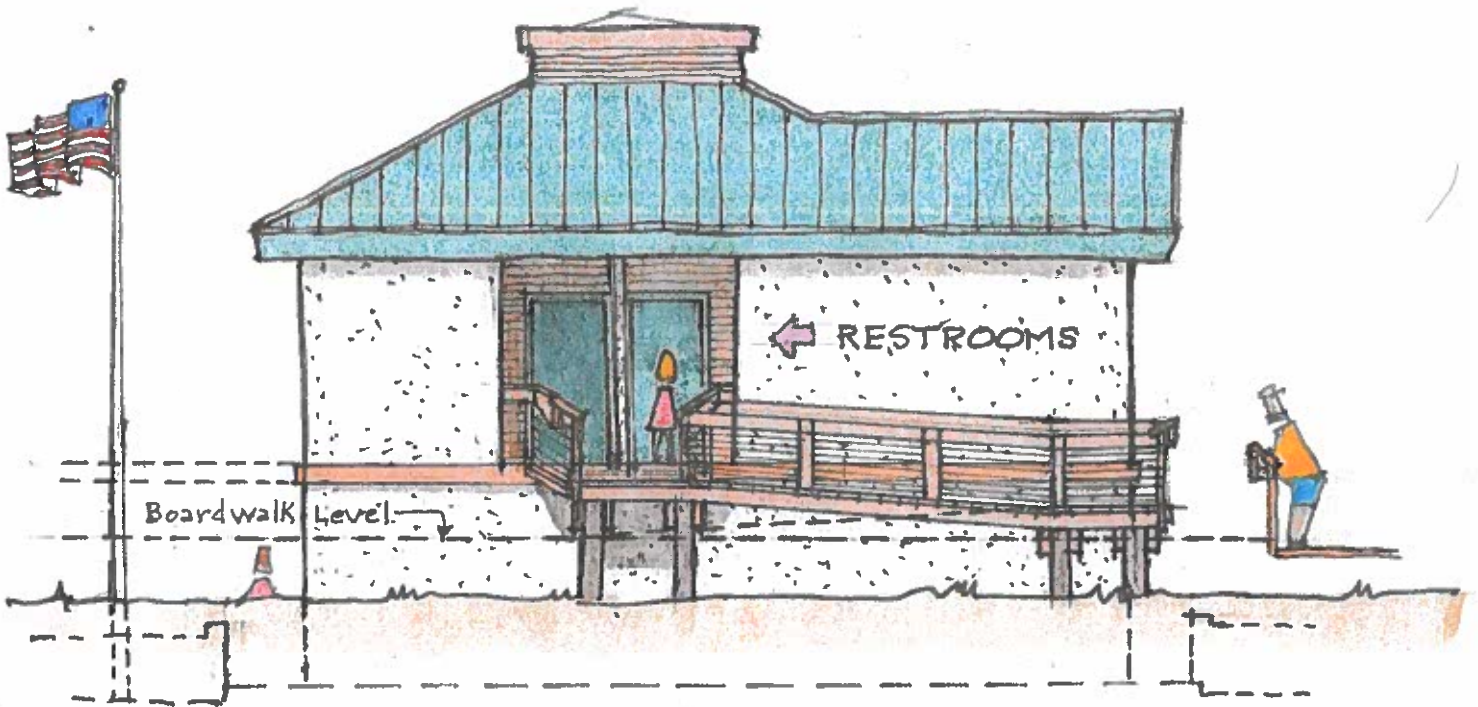


WEST ELEVATION

$\frac{1}{8}'' = 1'-0''$

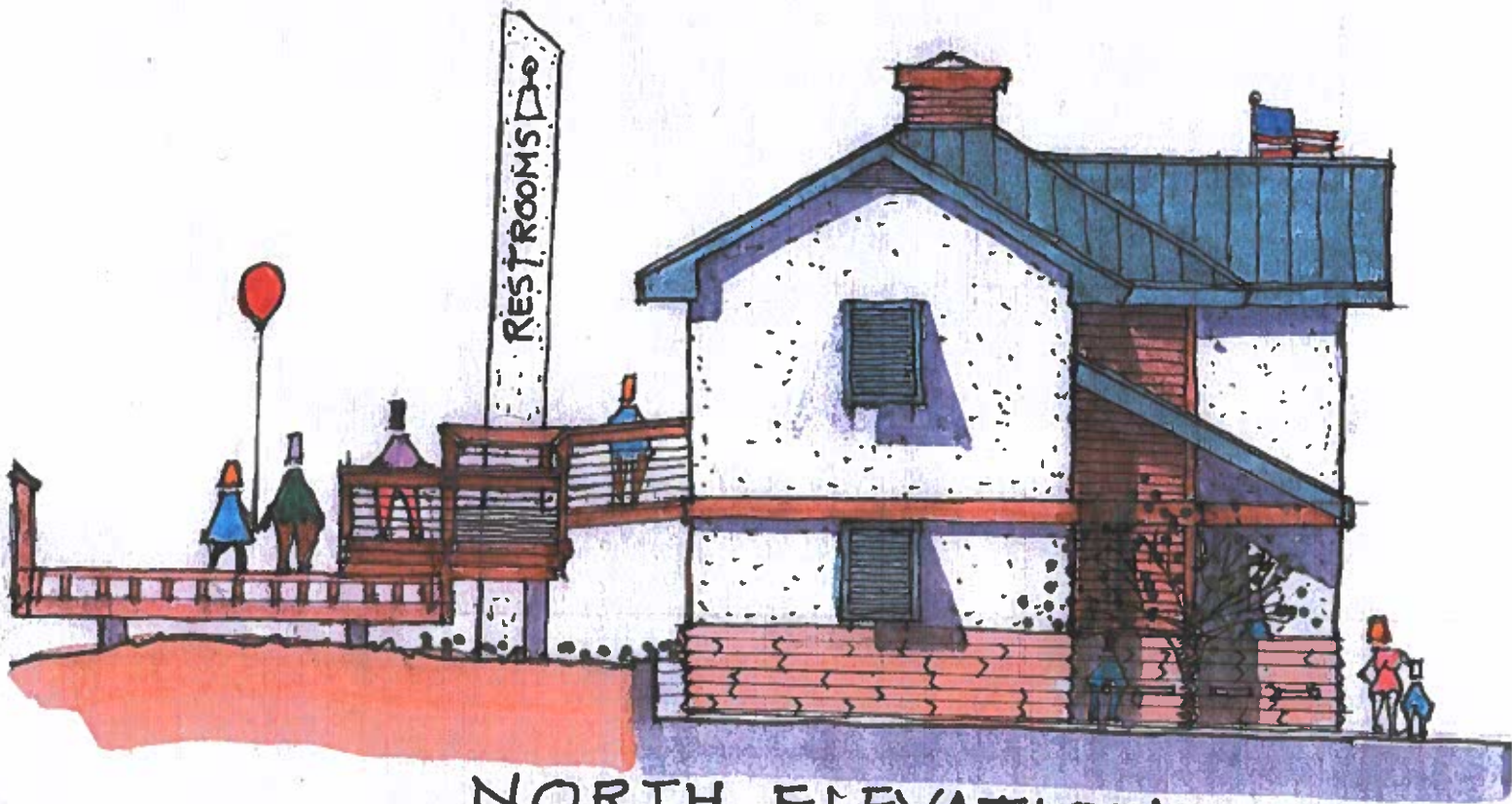




EAST ELEVATION

BOARDWALK SIDE

$\frac{1}{8}'' = 1'-0''$



NORTH ELEVATION

$\frac{1}{8}'' = 1'-0''$



WEST ELEVATION
1/8" = 1'-0"

