

## Proposal for Pedal Pub to operate in Carolina Beach, NC

Proposed Schedule to operate: Tours are 2 hours each

\*\*\*Note: These times will only be run if a reservation is made in advance and can be changed based on Town recommendations

### **Private Rides 6-15 passengers (entire bike is reserved)**

Sunday: 10am-12pm; 12:30pm-2:30pm; 3pm-5pm; 5:30-7:30pm; 8pm-10pm

Monday: 10am-12pm; 12:30pm-2:30pm; 3pm-5pm; 5:30-7:30pm; 8pm-10pm

Tuesday: 10am-12pm; 12:30pm-2:30pm; 3pm-5pm; 5:30-7:30pm; 8pm-10pm

Wednesday: 10am-12pm; 12:30pm-2:30pm; 3pm-5pm; 5:30-7:30pm; 8pm-10pm

Thursday: 10am-12pm; 12:30pm-2:30pm; 3pm-5pm; 5:30-7:30pm; 8pm-10pm

Friday: 12pm-2pm; 2:30-4:30pm; 5:00-7pm; 7:30-9:30pm; 10pm-12am

Saturday: 12pm-2pm; 2:30-4:30pm; 5:00-7pm; 7:30-9:30pm; 10pm-12am

### **Public Rides 6-15 passengers (individual seats sold)**

\*\*\*Note: slots will be blocked for public when a private ride is booked. Times subject to change based on Town recommendations

Sunday: 5:30-7:30pm; 8pm-10pm

Monday: 5:30-7:30pm; 8pm-10pm

Tuesday: 5:30-7:30pm; 8pm-10pm

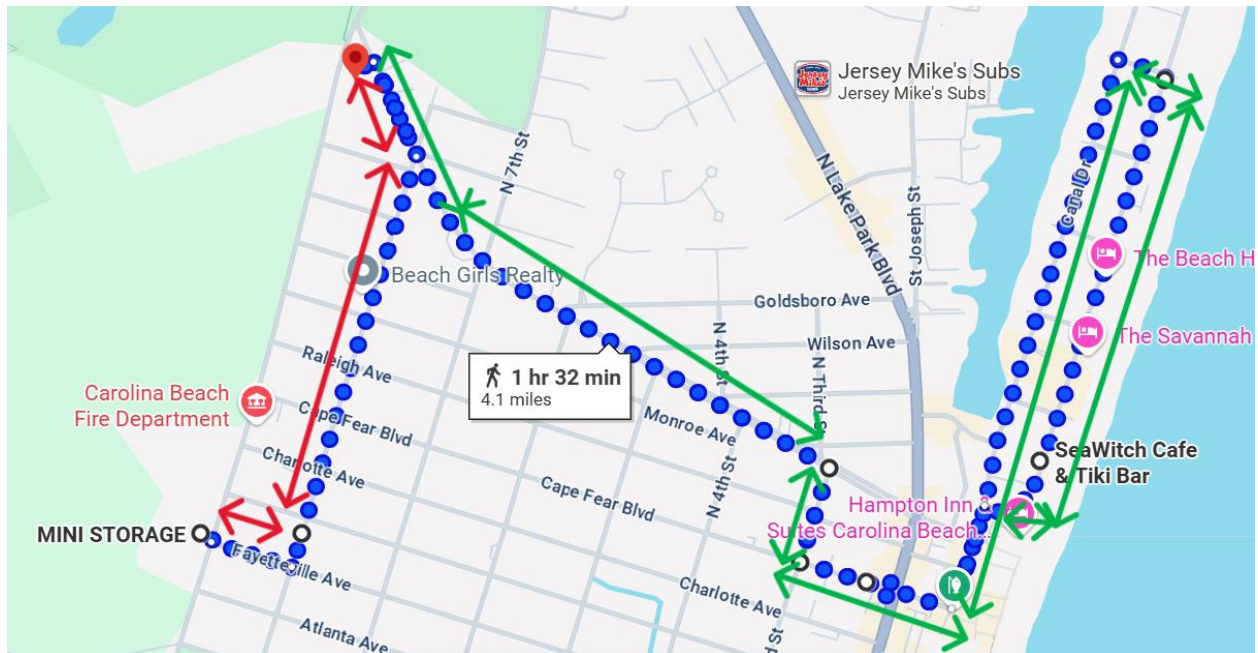
Wednesday: 5:30-7:30pm; 8pm-10pm

Thursday: 5:30-7:30pm; 8pm-10pm

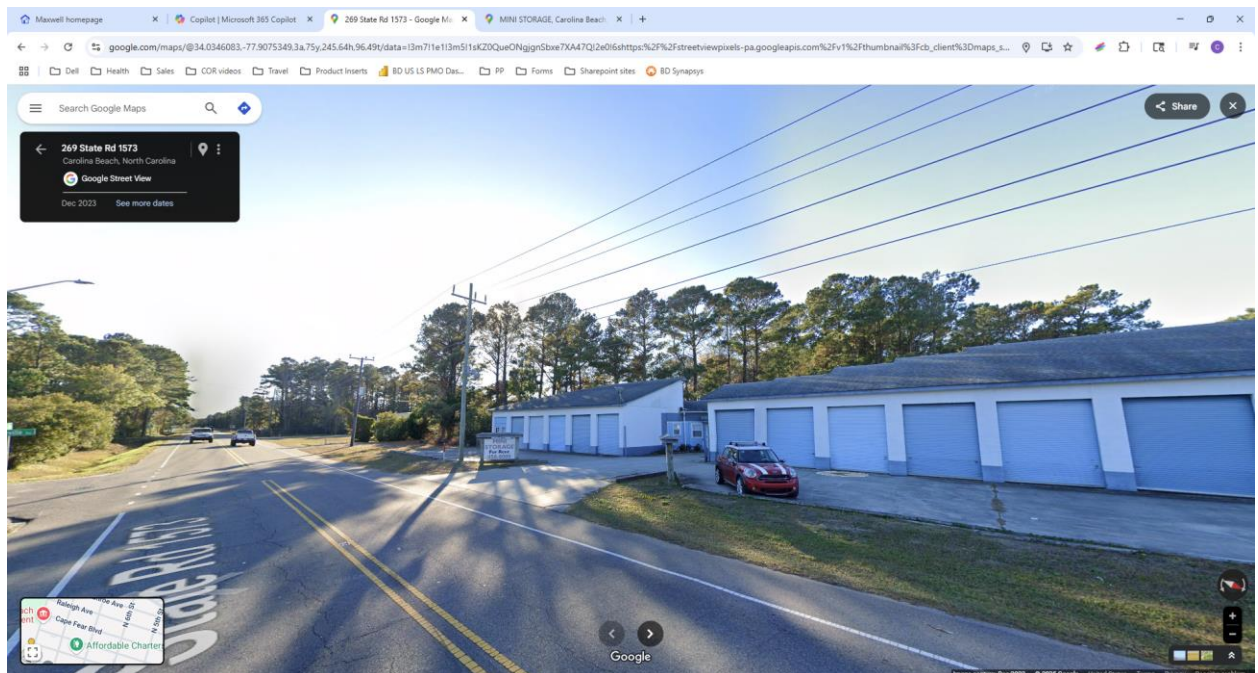
Friday: 5:00pm-7pm; 7:30pm-9:30pm; 10pm-12am

Saturday: 5:00pm-7pm; 7:30pm-9:30; 10pm-12am

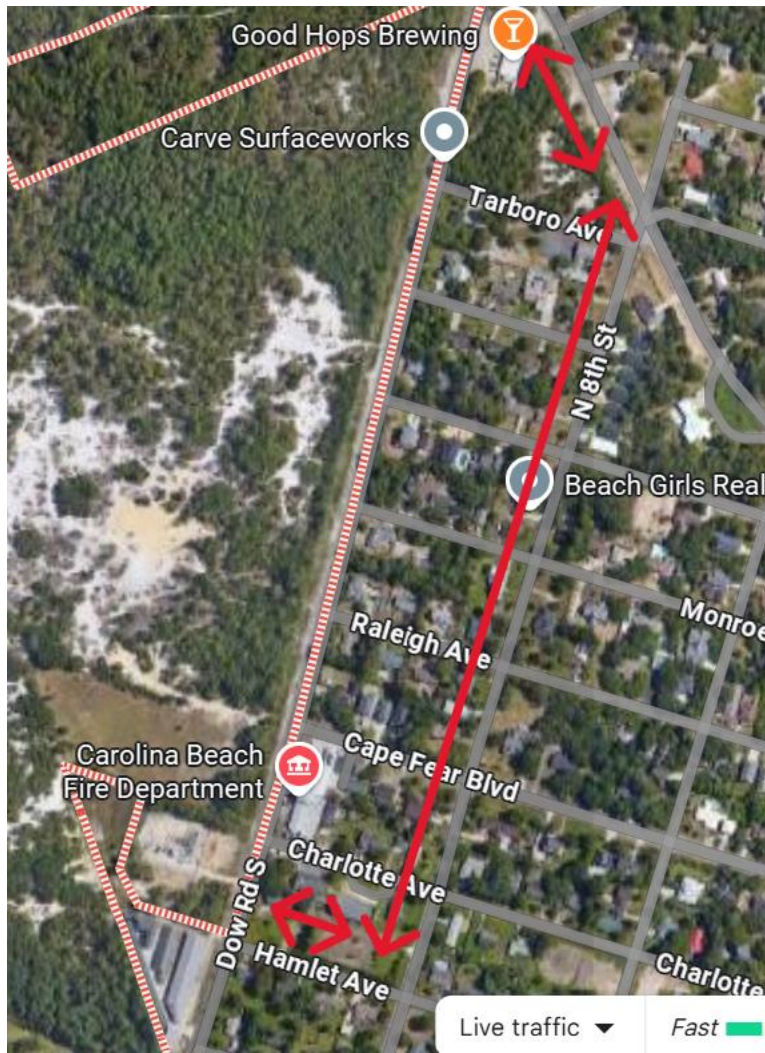
Red route is only to and from storage. No passengers



Storage: Travel on 8<sup>th</sup> will only be done with no passengers and only for getting to and from the start point. No music, no noise.

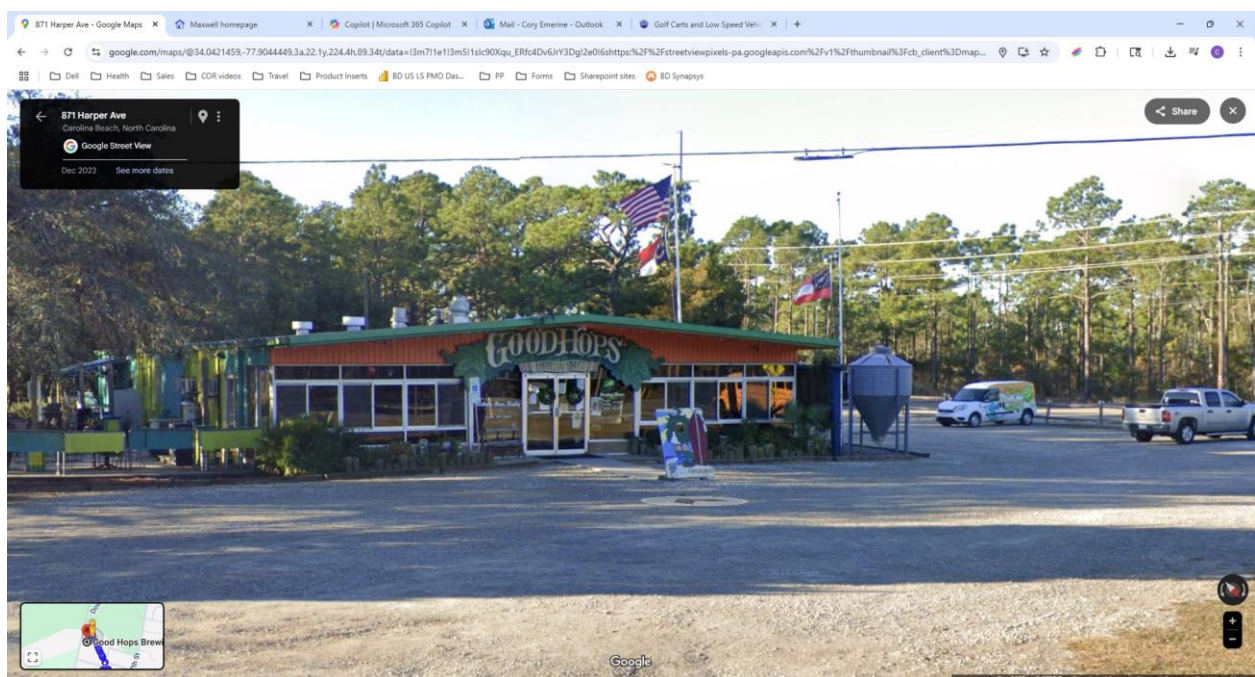
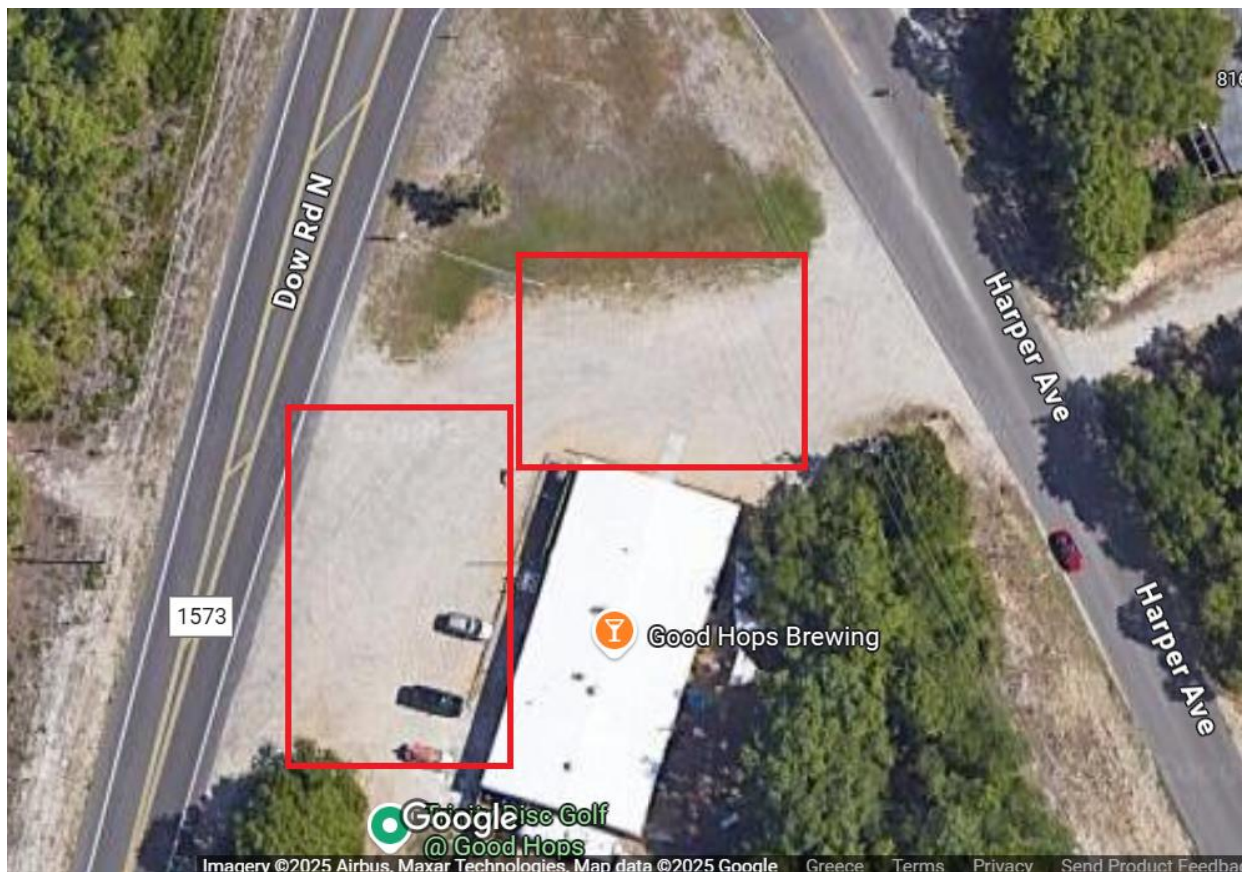


Cross to Hamlet St.



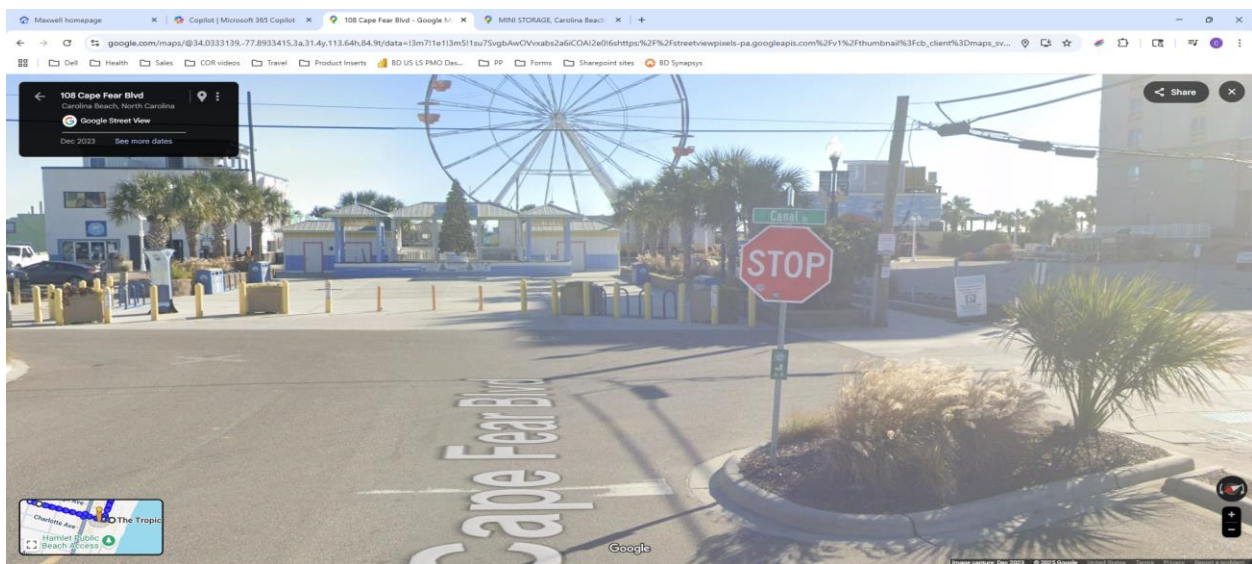
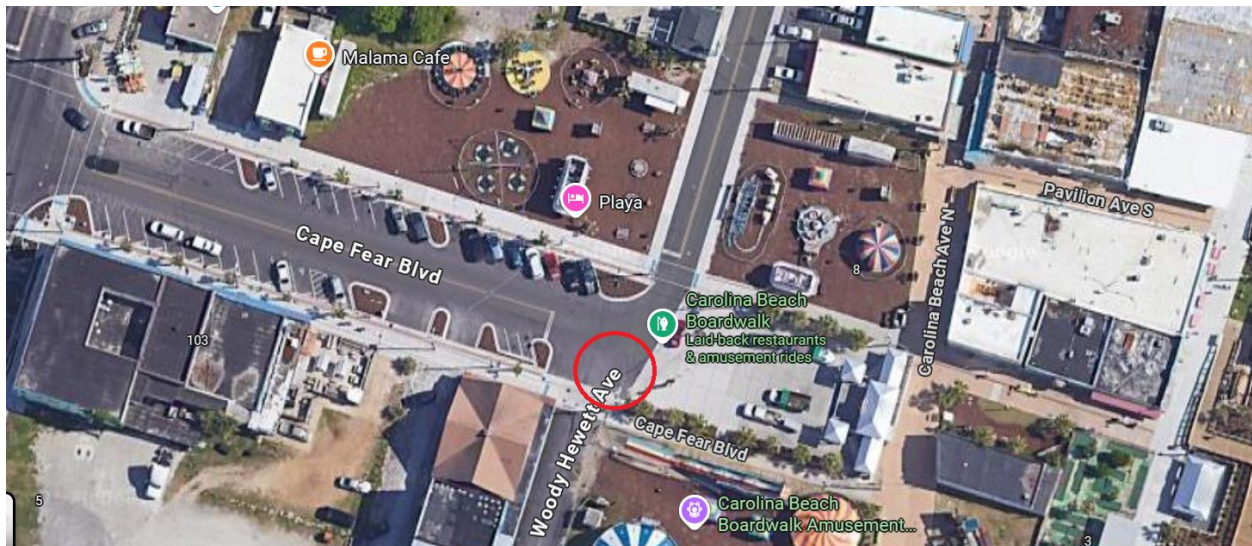


Start and Finish point for patrons. Plenty of parking and additional parking in the rear



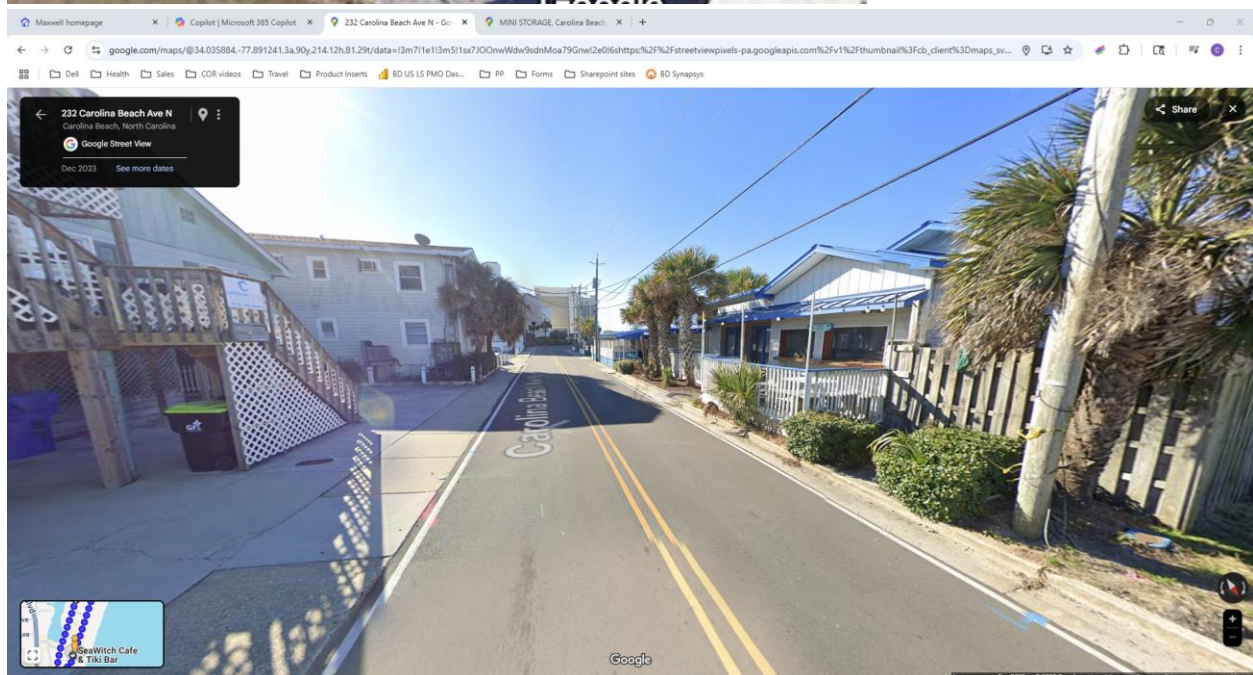
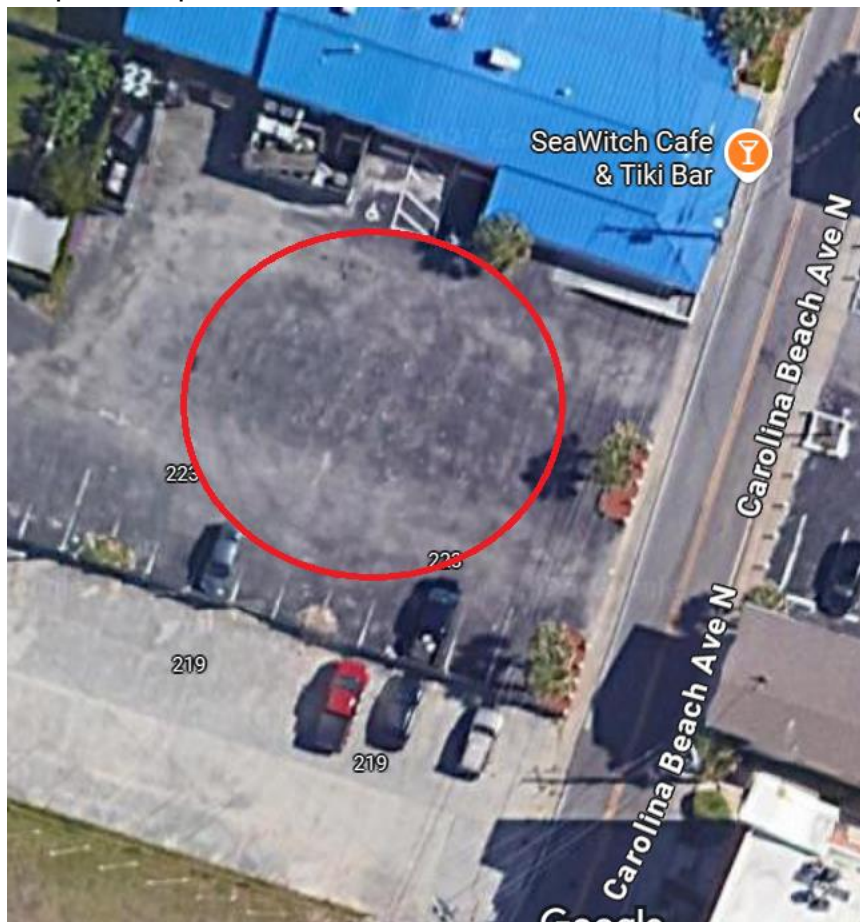


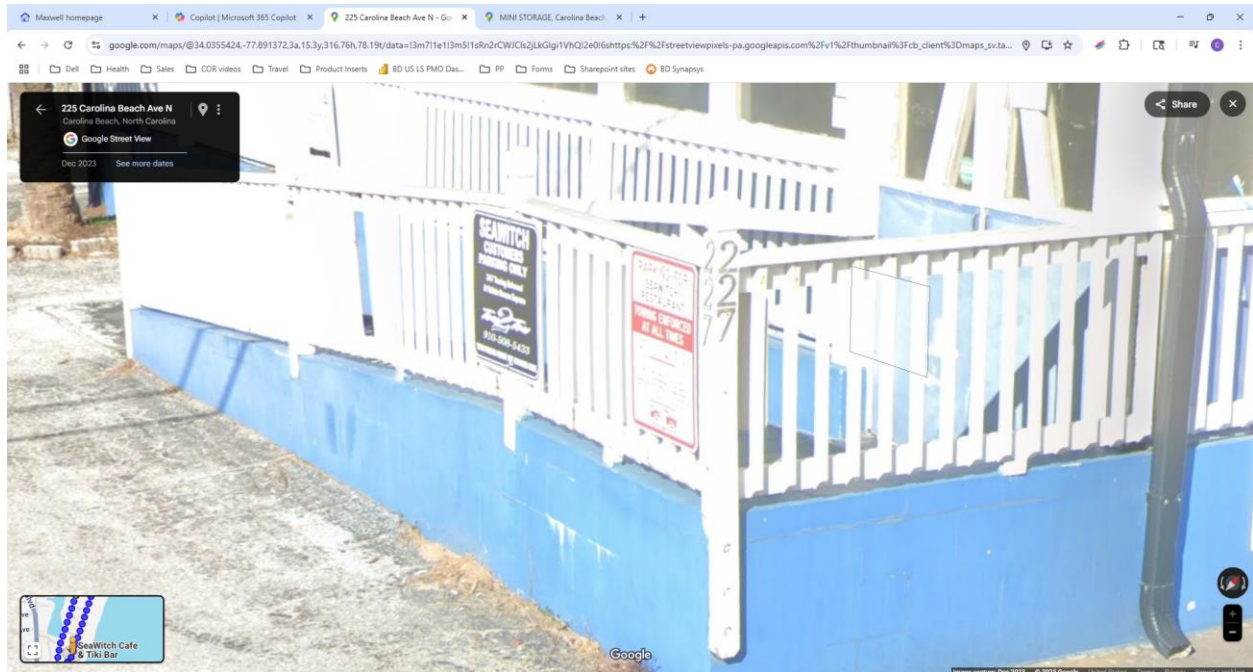
Stop 1: Drop off here (20 min max). park on Raleigh in the marked loading zone (suggested by the TRC). Circle back for pick up



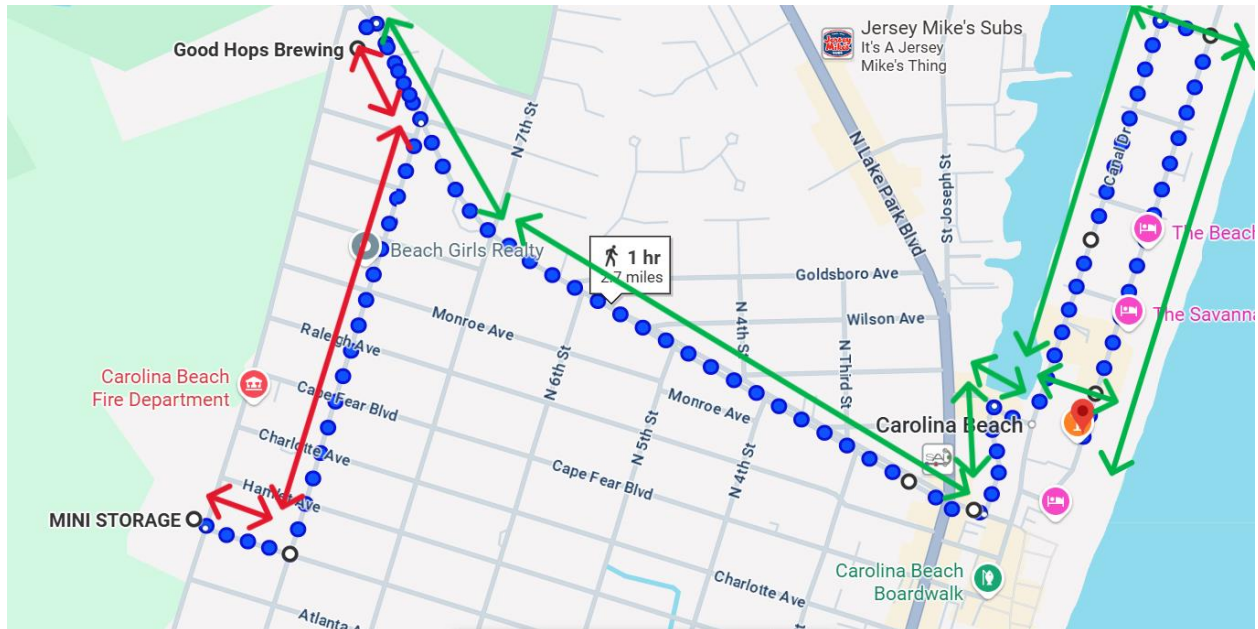


Stop 2: Will park in lot next to restaurant





Alternative route during fireworks. If there is not a route that works we will not operate during those hours on Thursdays.



**Names and addresses of employees to operate the Pedal Vehicle**

Kayla Brown

4503 Coddington Loop Apt 305

Wilmington, NC 28405

David Alex Larson

392 Yorkshire Dr

Cameron, NC 28326

Sam Jones

980 Coosaw

Wilmington, NC 28412

Sydney Greene

5324 Heading Bluff Rd

Currie, NC 28435

Cory Emerine

11203 Smokethorn Dr NW

Concord, NC 28027