



Netherlands Study Visit Recap June 3-7 2024

CAPITOLA CITY COUNCIL



City of Capitola Delegates

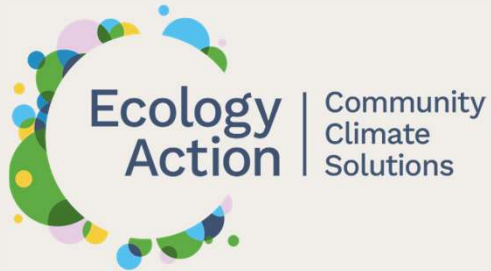


Yvette Brooks
Vice-Mayor, City of Capitola

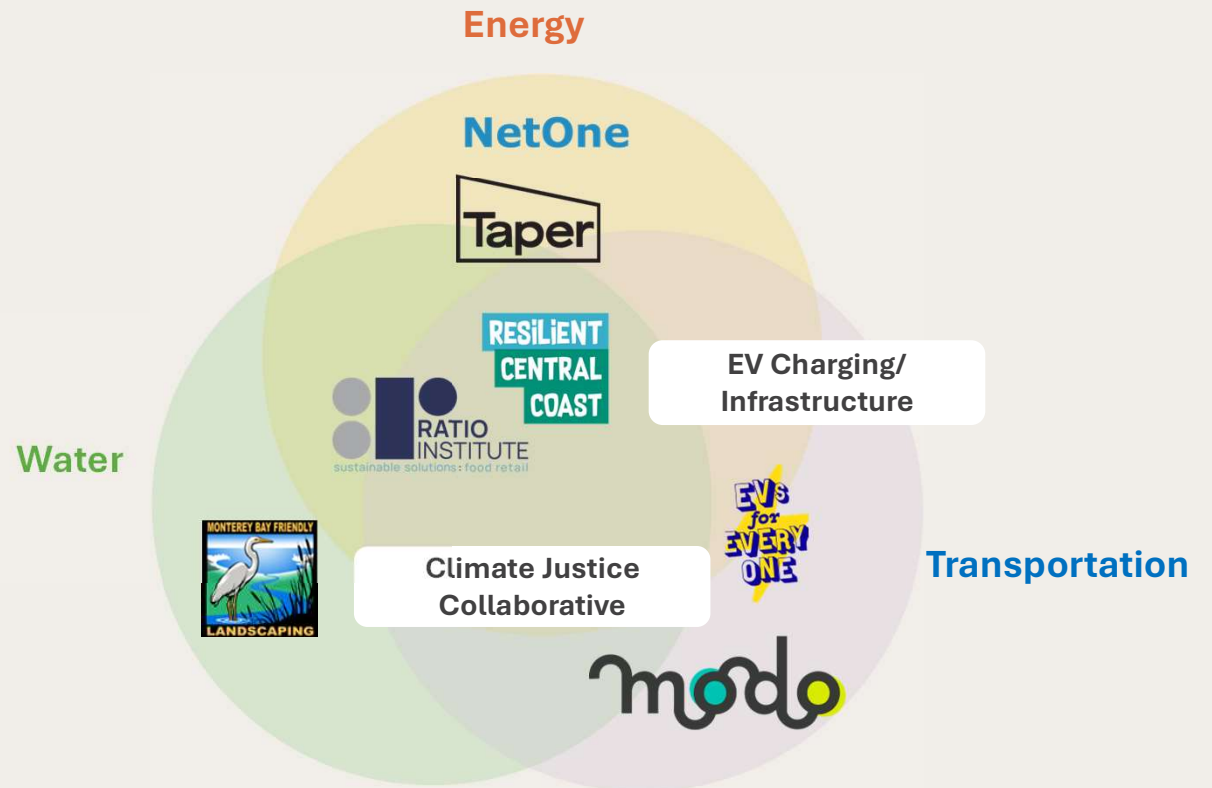


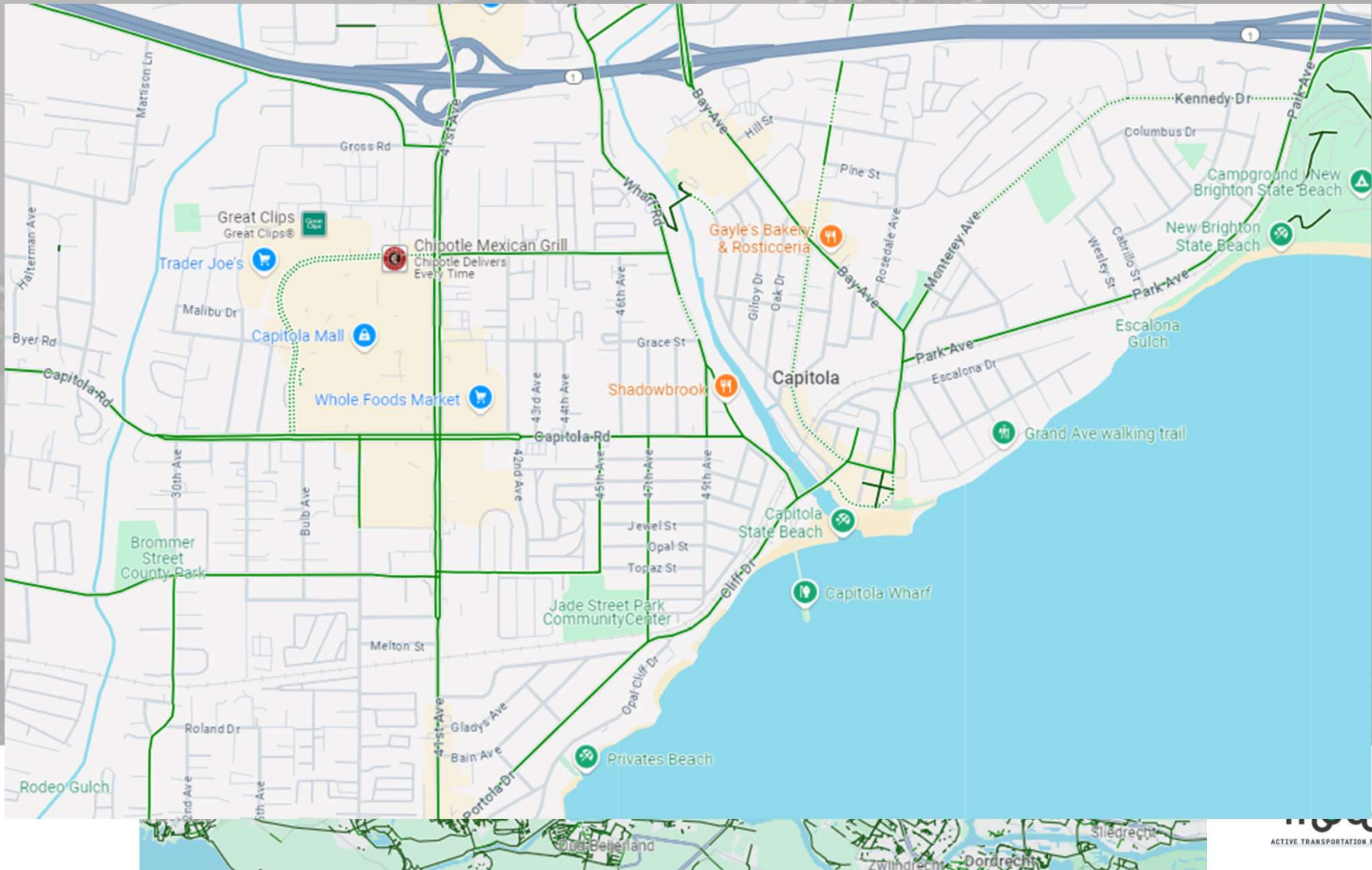
Kailash Mozumder
Public Work Project Manager, City of Capitola





Our mission is to advance equitable community climate solutions in high-greenhouse gas emitting sectors. To achieve this we empower people, businesses and communities make simple, yet profound changes that have measurable social, economic, and environmental impact through innovative energy, water, and transportation solutions.



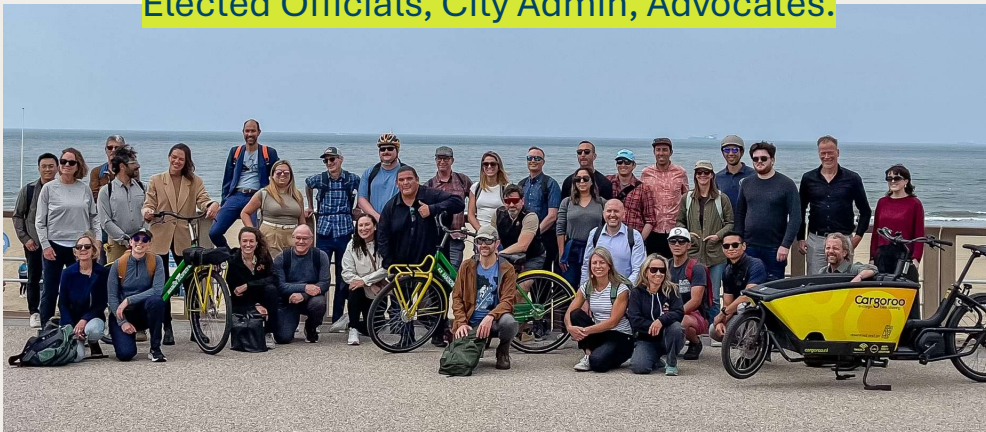


ACTIVE TRANSPORTATION FOR ALL



Who went on this trip?

30 Delegates including Planners, Engineers, Elected Officials, City Admin, Advocates.



County-wide representatives from the following agencies:

- UC Santa Cruz
- City of Santa Cruz
- City of Scotts Valley
- City of Capitola
- City of Watsonville
- County of Santa Cruz
- Santa Cruz Regional Transportation Commission
- Transportation Agency of Monterey County
- Association of Monterey Bay Area Governments
- Ecology Action

What did we learn?



Integrating principles applied in the Netherlands can transform a community's quality of life

1. Network Planning
2. Infrastructure Design
3. Cycle Highways
4. Car Management
5. Intersection Design
6. Pop Up to Permanent Infrastructure + Tactical Urbanism
7. School Zones

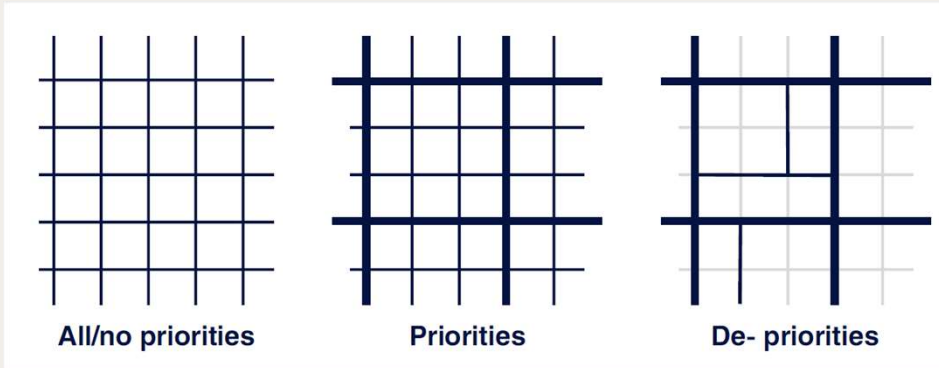


The Headlines:

- **30 delegates from 10 orgs/agencies** expanded their knowledge about safety, livability, and mobility with this trip.
- **28% of all trips in the Netherlands are made by bike** and they have comprehensive active transportation infrastructure to support that.
- To increase walking, biking, and transit (and reduce GHG in the process) **we need transformative infrastructure changes, and we just saw how it can be done.**

Critical Takeaways:

Thinking at a Network Level



Critical Takeaways:

Connectivity and Prioritization of Roads

FIGURE LU-1 RESIDENTIAL NEIGHBORHOODS



*Neighborhood boundaries are approximate.

Source: City of Capitola, 2010.

FIGURE LU-2 MIXED-USE AND COMMERCIAL DISTRICTS



*District boundaries are approximate.

Source: City of Capitola, 2010.



Critical Takeaways:

Don't Ignore the Weakest Link

- A Network is only as good as its weakest link: **the intersection** is where the majority of collisions occur and where we see cycling infrastructure “disappear”
- Signalized and unsignalized junctions are **physically protected** and designed to reduce speeds and raise awareness, increasing safety for all road users
- Raised and **continuous cycle path** at side streets keeps vulnerable users in a raised, seamless and prioritized space



Critical Takeaways:

School Zones: Design for the Behavior you Want



New Brighton Middle School (above)



Traffic calmed street to Dutch school (above)



The Kid-Friendly City

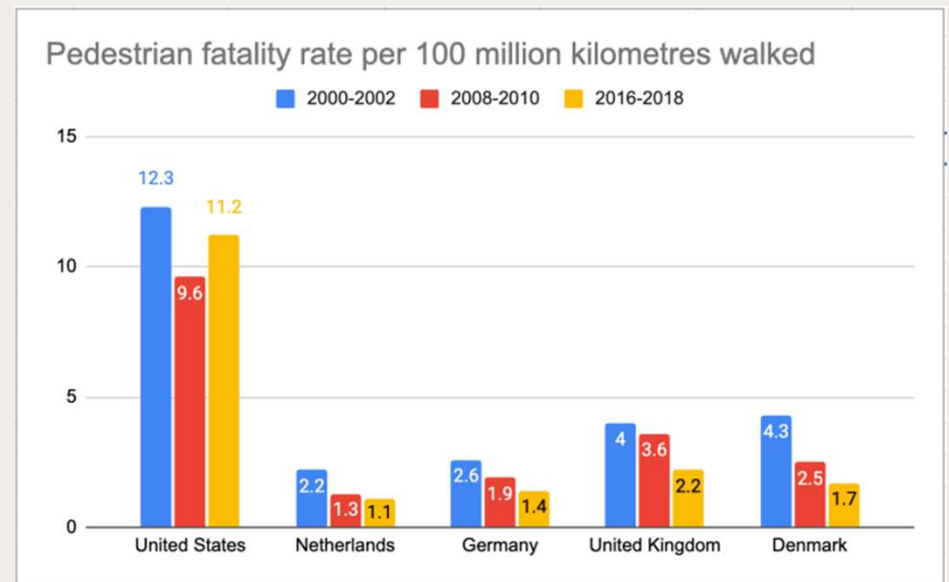
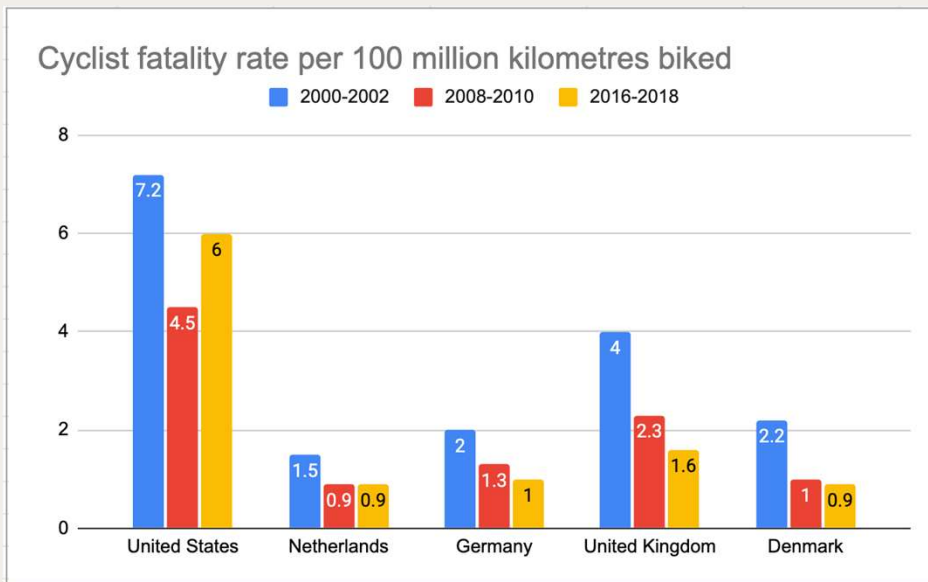
- **Two-thirds of all Dutch children** walk or cycle to school; for high school students, that number is closer to 75%
- **The 12-17 age group cycles more** than any other age group (60% of ALL trips)
- **Dutch children are among the happiest in the world** (regularly ranked as such by UNICEF) specifically citing their unrivaled levels of physical activity, freedom, autonomy
- **Mental and Physical wellbeing** also boasts the lowest levels of obesity and depressions in the EU



Critical Takeaways:

The Safest Streets in the World

“If the U.S. had achieved the same improvements in traffic safety as the Netherlands (since 1970) **22,000 fewer Americans would have died** on our roads in 2015” - Vox



Biggest Takeaways

What We Can Achieve

- **Safety** for *all* our Residents
- **Economic Development** for our Businesses
- Livable, Connected and **Thriving** Community
- County-wide **Collaboration**



Where to from here?

- Meet with Capitola City Council members for a deeper dive into applicable lessons learned from the study visit
- Ecology Action will be reconvening the county-wide coalition of delegates in December to support on design review, cross jurisdiction collaboration, and mapping out next steps for improved mobility and livability for us all
- More to come!

