

Grand Avenue Pathway



City Council
June 22, 2023



Background

- Between Central Avenue and Sacramento Avenue
 - Closed to vehicular traffic since the 1980's
- Pedestrian walkway currently extends two blocks east of Central Avenue to Oakland Avenue

Grand Avenue Pathway

Previous Council Direction



2005

Grand Avenue Pathway

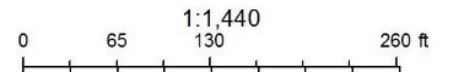
2023 Bluff Failure



Grand Avenue Pathway



June 12, 2023



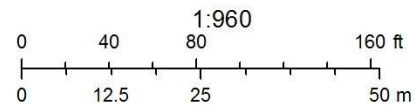
Private Property Encroachments



June 22, 2023

Parcels

 Parcels



County of Santa Cruz



Erik Zinn of Pacific Crest Engineering (PCE)

- Completed previous studies

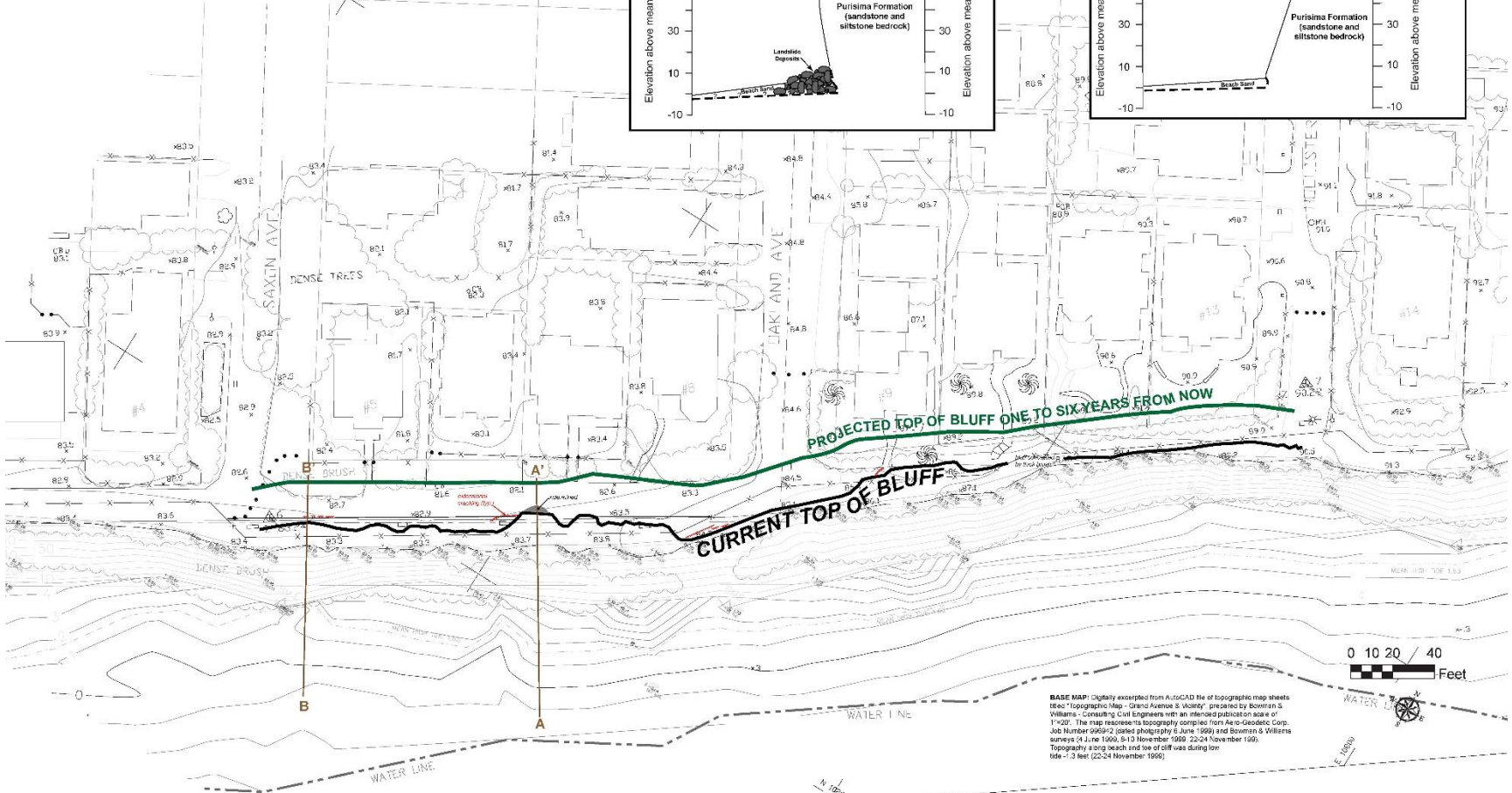
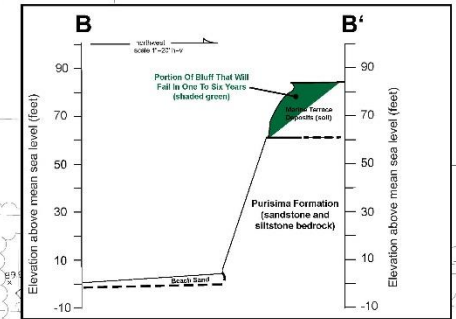
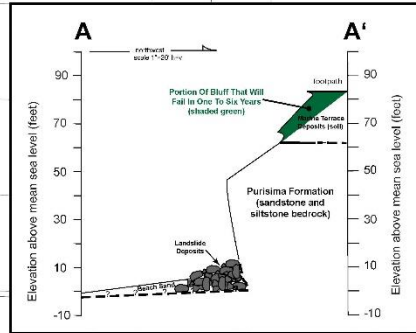
Pacific Crest
ENGINEERING INC.
SITE MAP & GEOLOGIC CROSS SECTIONS
12500 AVENUE
12500 AVENUE, SUITE 100, CARLSBAD, CA 92008

DATE: 8.14.2012
JOB: 0223
SCALE: 1"=20'
DRAWN BY: D. CARL

Plate 1

ERIK N. ZINN
NO. 8854
STATE OF CALIFORNIA
LAND SURVEYOR

ERIK N. ZINN
NO. 2139
STATE OF CALIFORNIA
LAND SURVEYOR



Grand Avenue Pathway

Alternative Actions: Option 2



Grand Avenue Pathway

Fiscal Impact



Option	Capital Cost	Staff Time	Risk
1. Relocate Fencing	Low	Low	Moderate
2. Remove Encroachments	Moderate	High	Low
3. Pathway Closure	Low	Moderate	Low

Recommendation

Direct staff to relocate and repair existing fencing to maintain a minimum walkway width of eight feet on the Grand Avenue Pathway.



