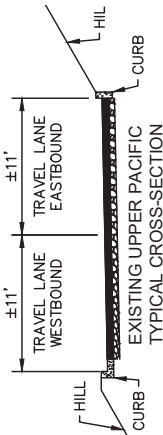
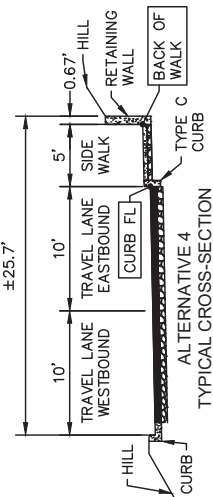


MATCHLINE

LAYOUT NOTES:

1. EXISTING GRADES AND TREE LOCATIONS ARE BASED ON 2015 SURVEY DATA FROM BOWMAN & WILLIAMS. DIMENSIONS SHOWN ARE APPROXIMATE.
2. TREE STRUCTURAL ROOT ZONE (SRZ) IS THE AREA AROUND THE BASE REQUIRED FOR THE TREE'S STABILITY IN THE GROUND; THE SRZ IS DETERMINED BY PROVIDING 0.5- FEET OF PROTECTION FOR EVERY 1-INCH IN TREE DIAMETER AT 4.5- FEET BREAST HEIGHT.
3. TREE CRITICAL ROOT ZONE (CRZ) IS THE AREA AROUND THE BASE WHERE ROOTS ESSENTIAL FOR THE TREE'S HEALTH ARE LOCATED. THE CRZ IS LARGER THAN THE SRZ AND IS TYPICALLY 1- FEET OF PROTECTION FOR EVERY 1-INCH IN TREE DIAMETER.
4. AN ARBORIST REPORT IS RECOMMENDED TO DETERMINE TREE IMPACTS.
5. A GEOTECHNICAL REPORT IS RECOMMENDED TO DETERMINE RETAINING WALL IMPACTS.
6. SEE SHEET 3 FOR PATHWAY MATERIAL OPTIONS AT TREE ROOT ZONE.



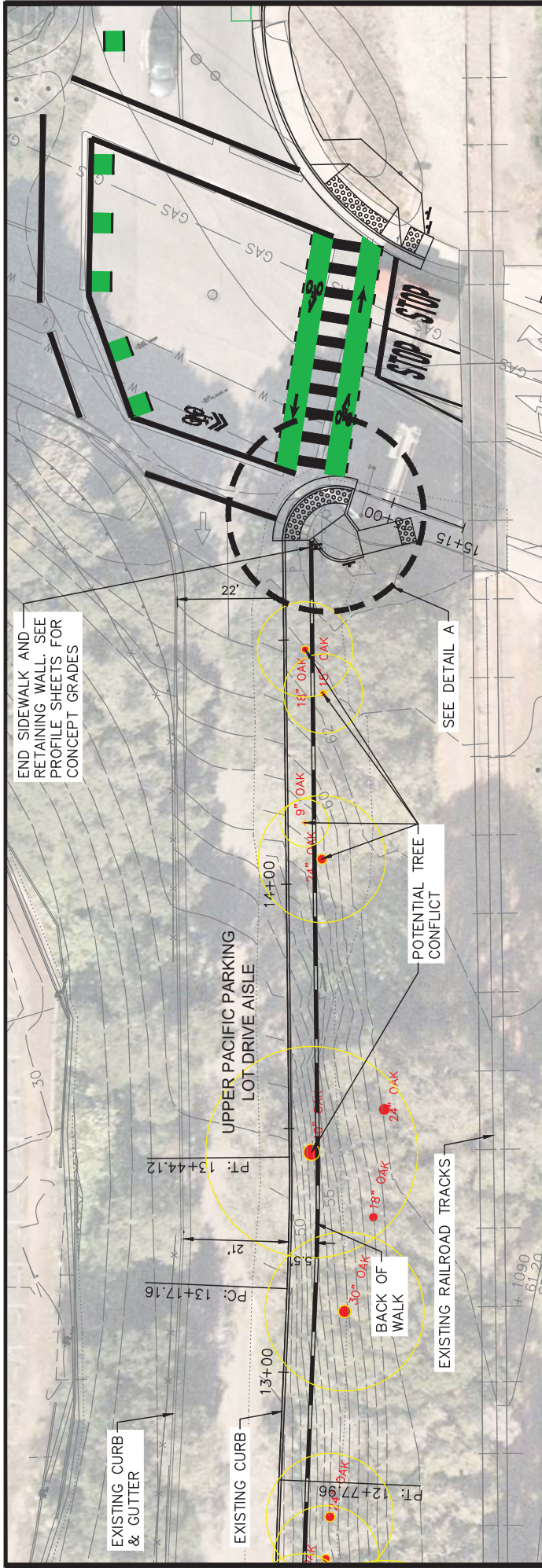
CONCEPT LAYOUT FOR PLANNING PURPOSES. NOT FOR CONSTRUCTION.



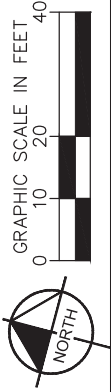
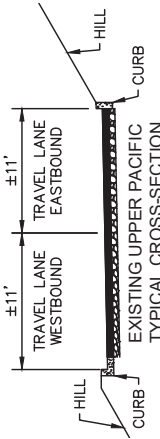
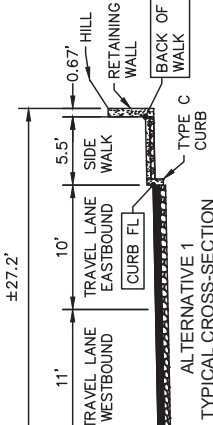
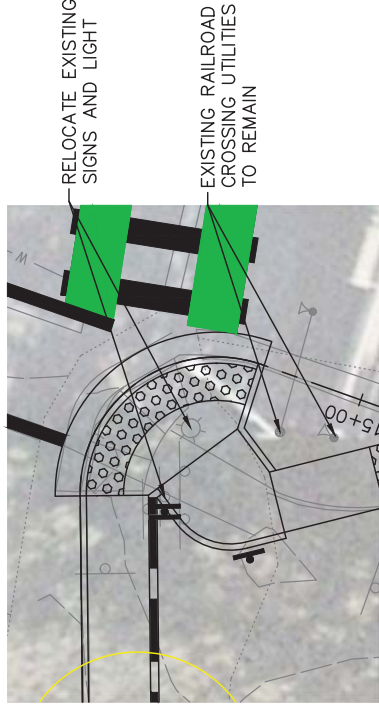
ALTERNATIVE SIDEWALK LAYOUT - SHEET 1

CITY OF CAPITOLA - UPPER PACIFIC SIDEWALK

DWW-097763140 JULY 2022



END SIDEWALK AND RETAINING WALL. SEE PROFILE SHEETS FOR CONCEPT GRADES



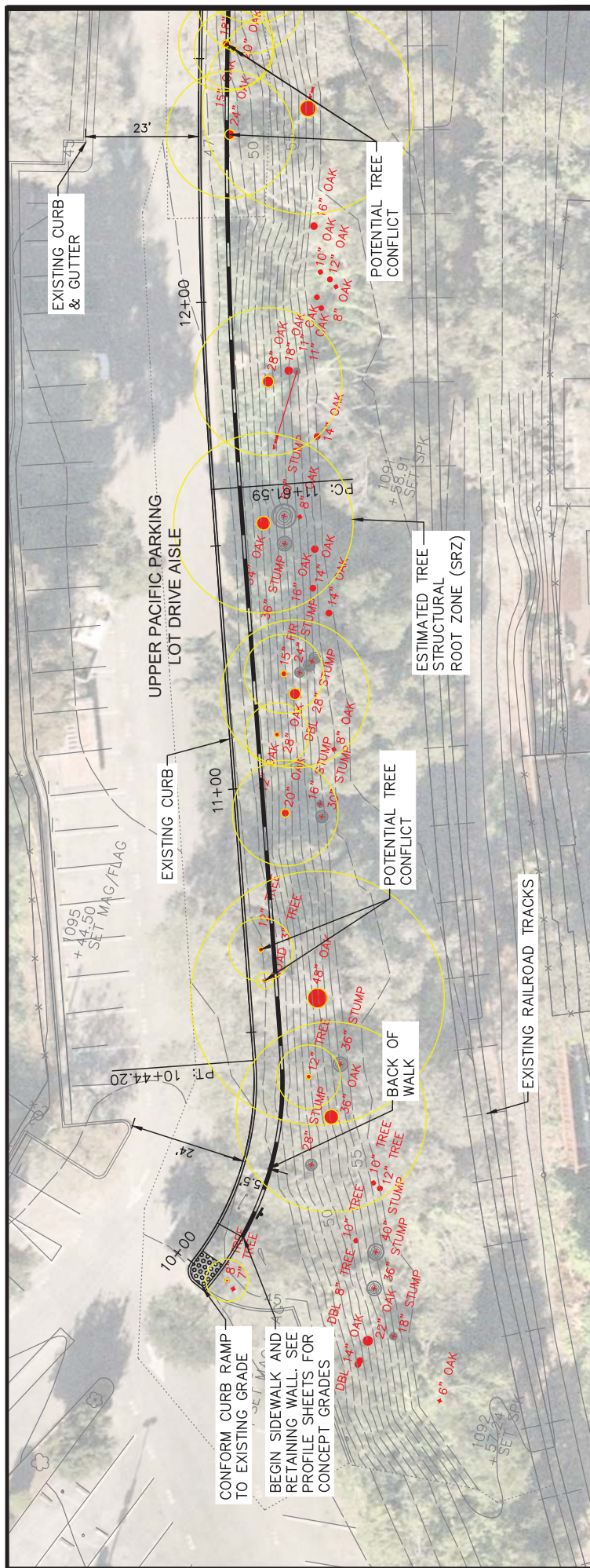
CONCEPT LAYOUT FOR PLANNING PURPOSES. NOT FOR CONSTRUCTION.



ALTERNATIVE 1
SIDEWALK LAYOUT - SHEET 2

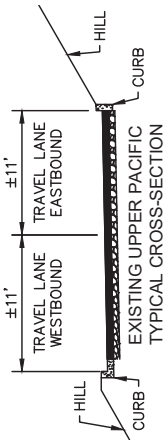
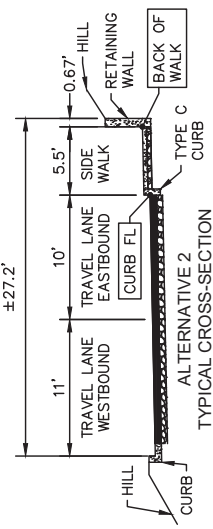
CITY OF CAPITOLA - UPPER PACIFIC SIDEWALK





LAYOUT NOTES:

1. EXISTING GRADES AND TREES LOCATIONS ARE BASED ON 2015 SURVEY DATA FROM BOWMAN & WILLIAMS. DIMENSIONS SHOWN ARE APPROXIMATE.
2. TREE STRUCTURAL ROOT ZONE (SRZ) IS THE AREA AROUND THE BASE REQUIRED FOR THE TREE'S STABILITY IN THE GROUND. THE SRZ IS DETERMINED BY PROVIDING 0.5- FEET OF PROTECTION FOR EVERY 1-INCH IN TREE DIAMETER AT 4.5- FEET BREAST HEIGHT.
3. TREE CRITICAL ROOT ZONE (CRZ) IS THE AREA AROUND THE BASE WHERE ROOTS ESSENTIAL FOR THE TREE'S HEALTH ARE LOCATED. THE CRZ IS LARGER THAN THE SRZ AND IS TYPICALLY 1- FEET OF PROTECTION FOR EVERY 1-INCH IN TREE DIAMETER.
4. AN ARBORIST REPORT IS RECOMMENDED TO DETERMINE TREE IMPACTS.
5. A GEOTECHNICAL REPORT IS RECOMMENDED TO DETERMINE RETAINING WALL IMPACTS.
6. SEE SHEET 3 FOR PATHWAY MATERIAL OPTIONS AT TREE ROOT ZONE.



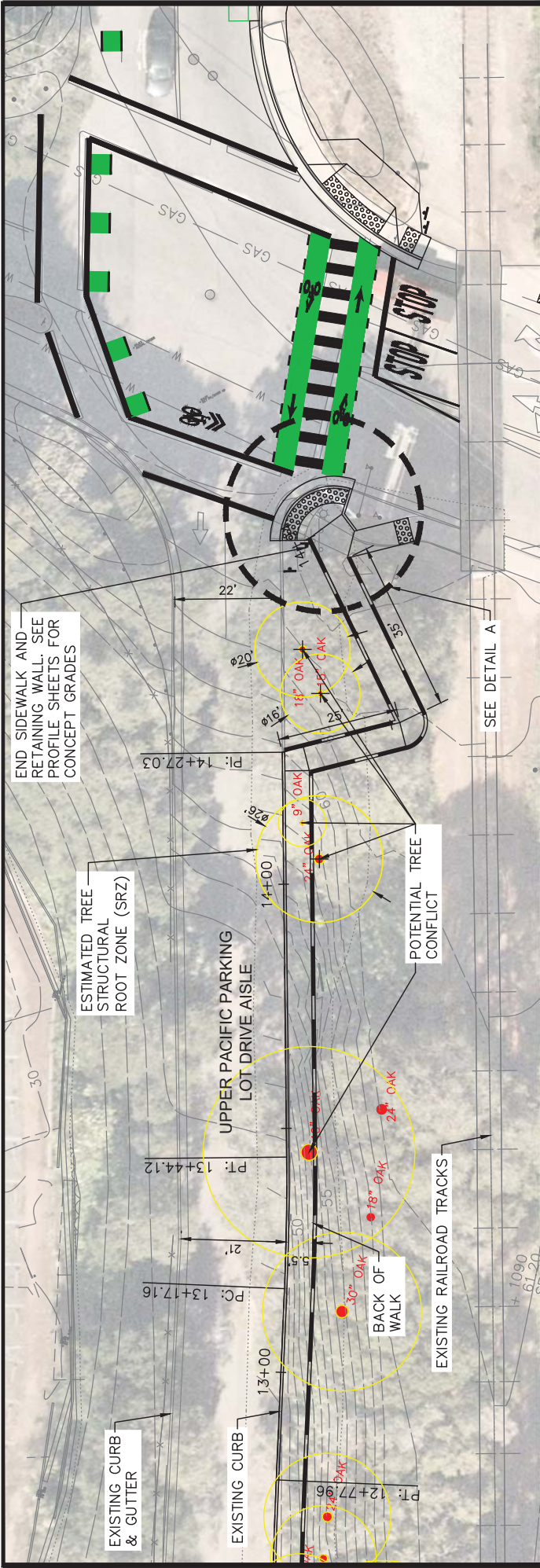
CONCEPT LAYOUT FOR PLANNING PURPOSES. NOT FOR CONSTRUCTION.



DWW-097763140 JUNE 2022

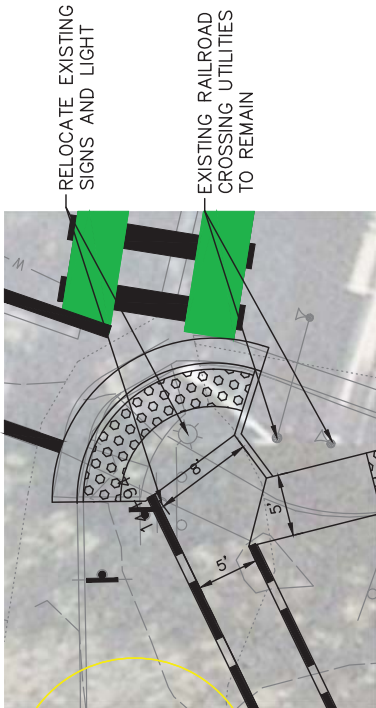
**ALTERNATIVE 2
SIDEWALK LAYOUT - SHEET 1**

CITY OF CAPITOLA - UPPER PACIFIC SIDEWALK

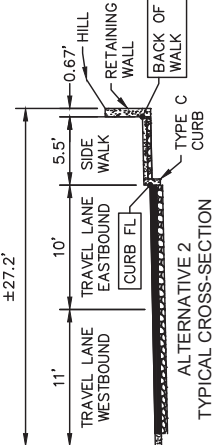


MATCHLINE

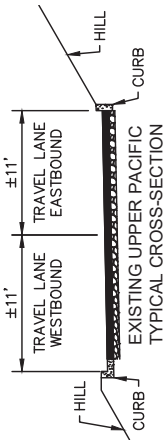
MATCHLINE



DETAIL A



ALTERNATIVE 2 TYPICAL CROSS-SECTION



EXISTING UPPER PACIFIC TYPICAL CROSS-SECTION



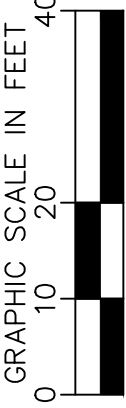
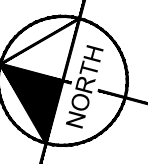
CONCEPT LAYOUT FOR PLANNING PURPOSES. NOT FOR CONSTRUCTION.

Kimley»Horn

DWW-097763140 JUNE 2022

**ALTERNATIVE 2
SIDEWALK LAYOUT - SHEET 2**

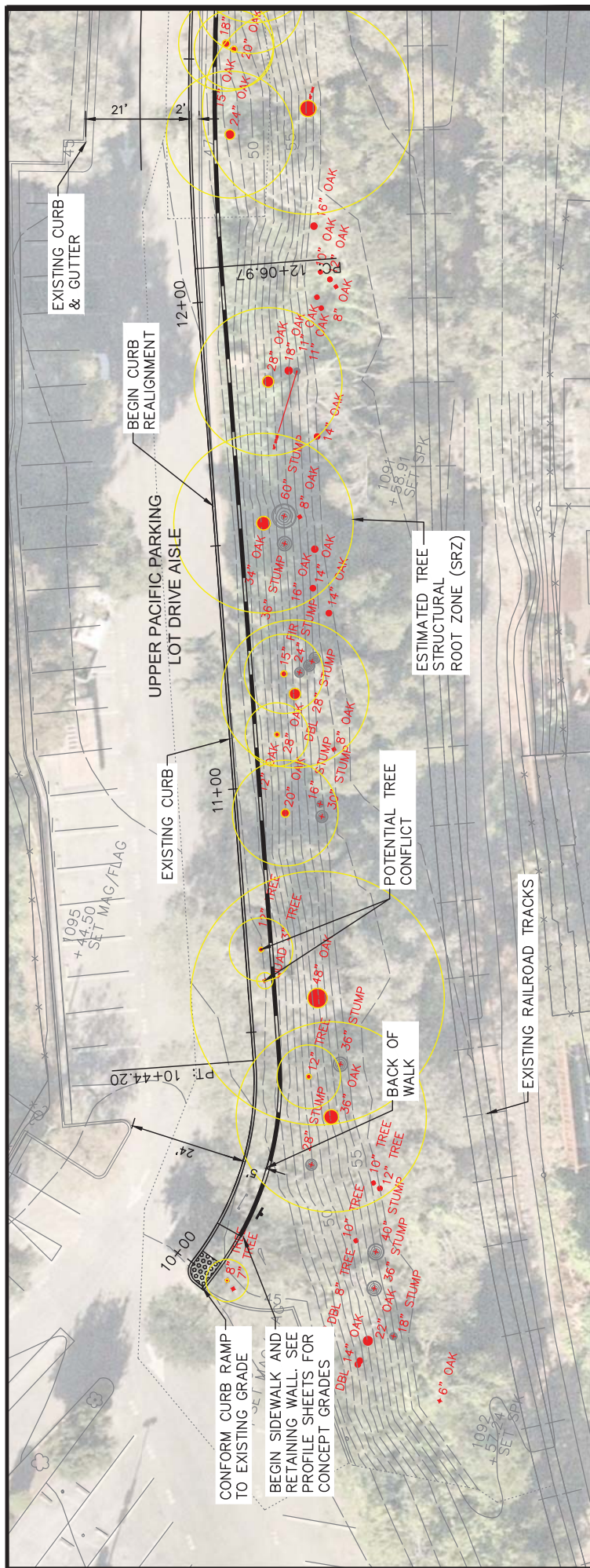
CITY OF CAPITOLA - UPPER PACIFIC SIDEWALK



CONCEPT LAYOUT FOR
PLANNING PURPOSES.
NOT FOR CONSTRUCTION

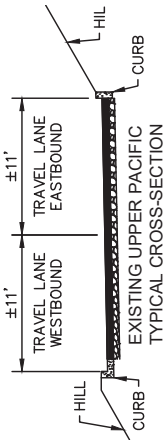
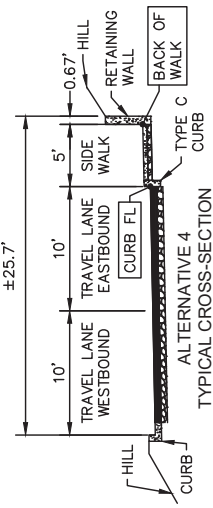


ALTERNATIVE G
SIDEWALK LAYOUT - SHEET 2



LAYOUT NOTES:

1. EXISTING GRADES AND TREE LOCATIONS ARE BASED ON 2015 SURVEY DATA FROM BOWMAN & WILLIAMS. DIMENSIONS SHOWN ARE APPROXIMATE.
2. TREE STRUCTURAL ROOT ZONE (SRZ) IS THE AREA AROUND THE BASE REQUIRED FOR THE TREE'S STABILITY IN THE GROUND; THE SRZ IS DETERMINED BY PROVIDING 0.5- FEET OF PROTECTION FOR EVERY 1-INCH IN TREE DIAMETER AT 4.5- FEET BREAST HEIGHT.
3. TREE CRITICAL ROOT ZONE (CRZ) IS THE AREA AROUND THE BASE WHERE ROOTS ESSENTIAL FOR THE TREE'S HEALTH ARE LOCATED. THE CRZ IS LARGER THAN THE SRZ AND IS TYPICALLY 1- FEET OF PROTECTION FOR EVERY 1-INCH IN TREE DIAMETER.
4. AN ARBORIST REPORT IS RECOMMENDED TO DETERMINE TREE IMPACTS.
5. A GEOTECHNICAL REPORT IS RECOMMENDED TO DETERMINE RETAINING WALL IMPACTS.
6. SEE SHEET 3 FOR PATHWAY MATERIAL OPTIONS AT TREE ROOT ZONE.



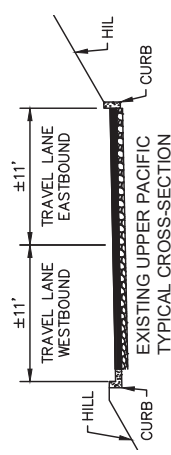
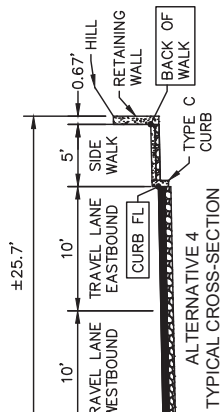
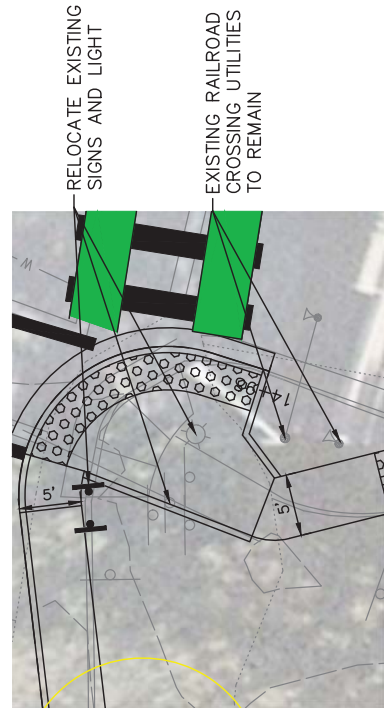
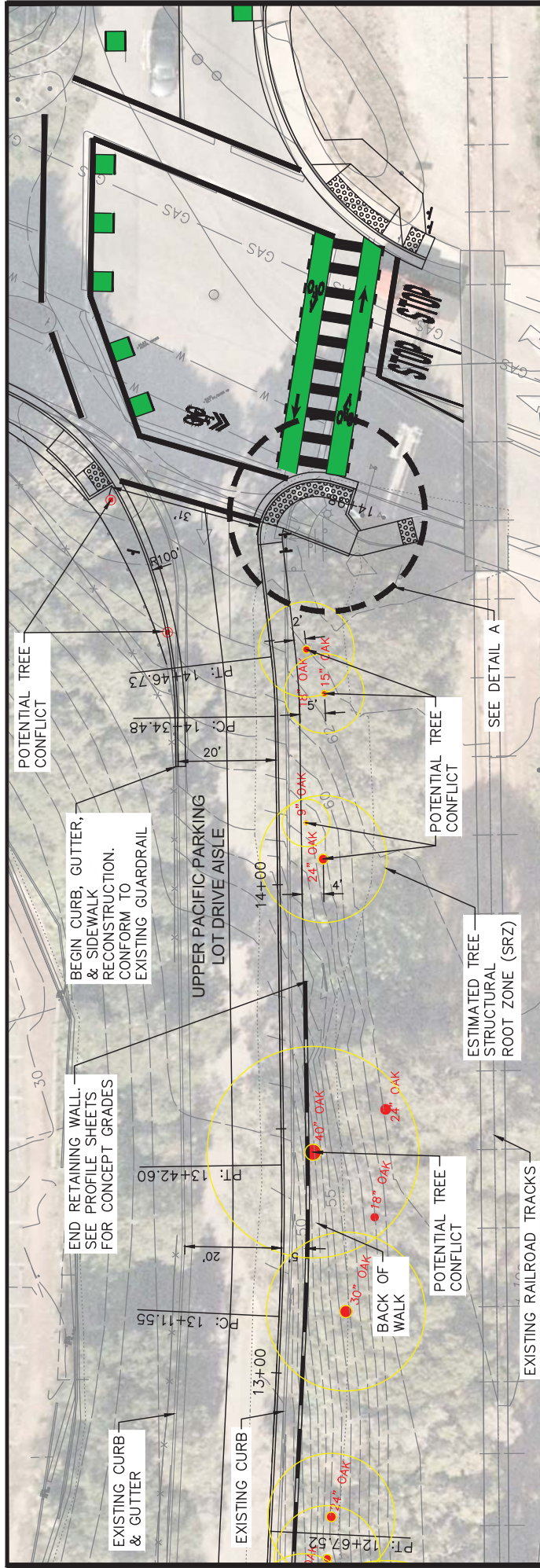
CONCEPT LAYOUT FOR PLANNING PURPOSES. NOT FOR CONSTRUCTION.



DWW-097763140 JULY 2022

**ALTERNATIVE 3
SIDEWALK LAYOUT - SHEET 1**

CITY OF CAPITOLA - UPPER PACIFIC SIDEWALK



Kimley»Horn

DW-097763140 JULY 2022

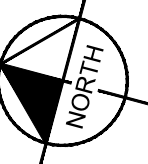
CONCEPT LAYOUT FOR PLANNING PURPOSES. NOT FOR CONSTRUCTION.

**ALTERNATIVE 3
SIDEWALK LAYOUT - SHEET 2**

CITY OF CAPITOLA - UPPER PACIFIC SIDEWALK

MATCHLINE

MATCHLINE



CONCEPT LAYOUT FOR
PLANNING PURPOSES.
NOT FOR CONSTRUCTION



ALTERNATIVE A
SIDEWALK LAYOUT - SHEET 2