



Pedestrian Pathway from the Upper
Beach and Village Parking Lot to
Monterey Avenue

City Council
September 14, 2023

Pedestrian Pathway to Monterey Ave

Project Location



Pedestrian Pathway to Monterey Ave

Project Location



Pedestrian Pathway to Monterey Ave

Project Location



Pedestrian Pathway to Monterey Ave

Background



March 2021 Council Mtg

- Agreement with SCCRTC for study and construction of pathway
- Separation between vehicles and pedestrians
- Provide access to Segment 11 of the Coastal Rail Trail at Monterey/Park Avenue intersection

February 10, 2022 Council Mtg

- Schematic plan of the pathway configuration
- Council directed staff to return with a preliminary design minimizing tree impacts

Pedestrian Pathway to Monterey Ave

Alignment Considerations



Use and Constructability

- Sidewalk Width
- Drive Aisle Width
- Retaining Walls

Tree Impacts

- Number
- Species
- Severity of Impact

Pedestrian Pathway to Monterey Ave

Alignment Alternatives



Alternative	1	2	3
Sidewalk Width	5.5'	5.5'	5.0'
Drive Aisle Width	11'/10'	11'/10'	10'/10'
Potential Trees Impacted	8-9	7-9	4-7
Retaining Wall Impacts	Moderate (3')	High (4'+)	Low (2')

Pedestrian Pathway to Monterey Ave

Alignment Alternatives



Alternative	1	2	3
Diameter (inches)	Impact		
Oak Tree			
15			
18			
18			
20			
24			
24			
40			
Other Tree Species			
3			
8			
12			
High likelihood of impact/removal	8	7	4
Moderate likelihood of impact	1	2	3
Total Trees Impacted	9	9	7

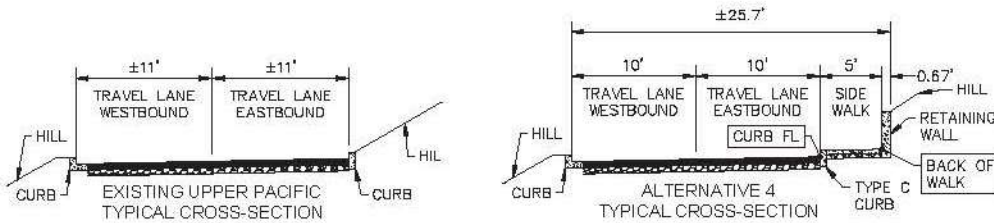
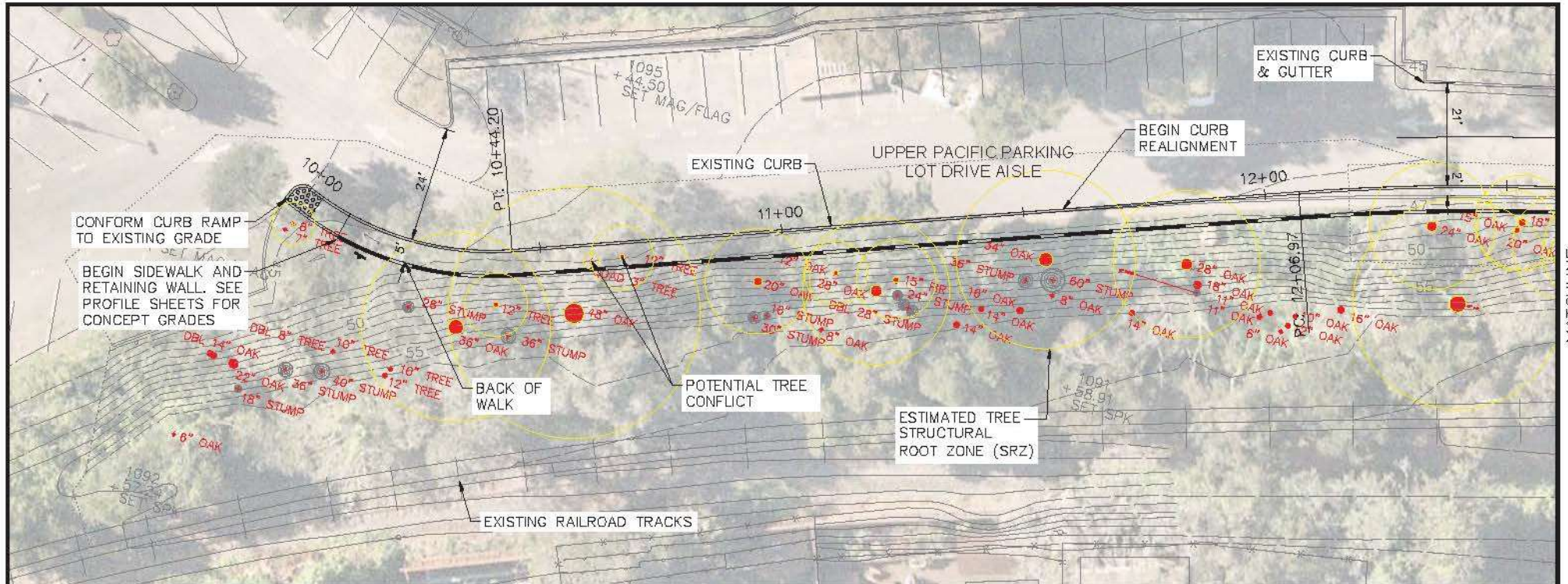
Pedestrian Pathway to Monterey Ave

Tree Impacts



Pedestrian Pathway to Monterey Ave

Alternative 3



LAYOUT NOTES:

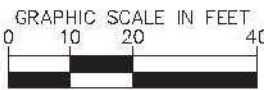
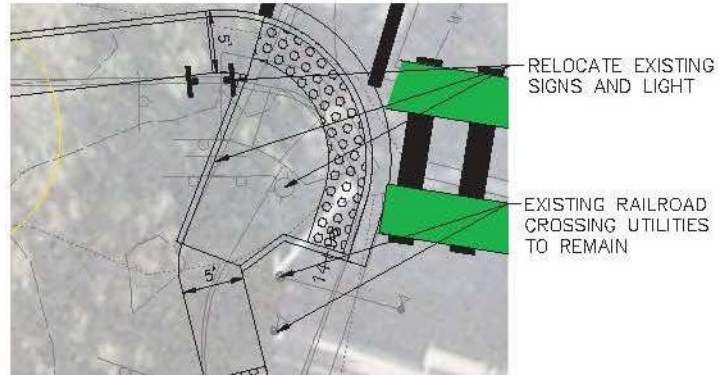
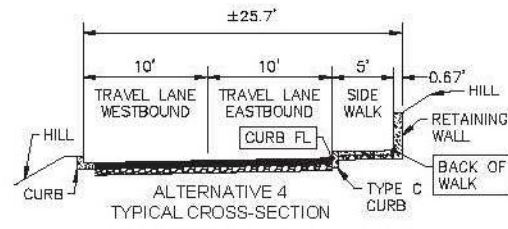
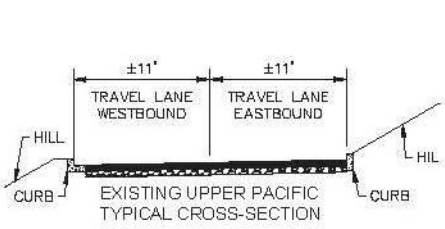
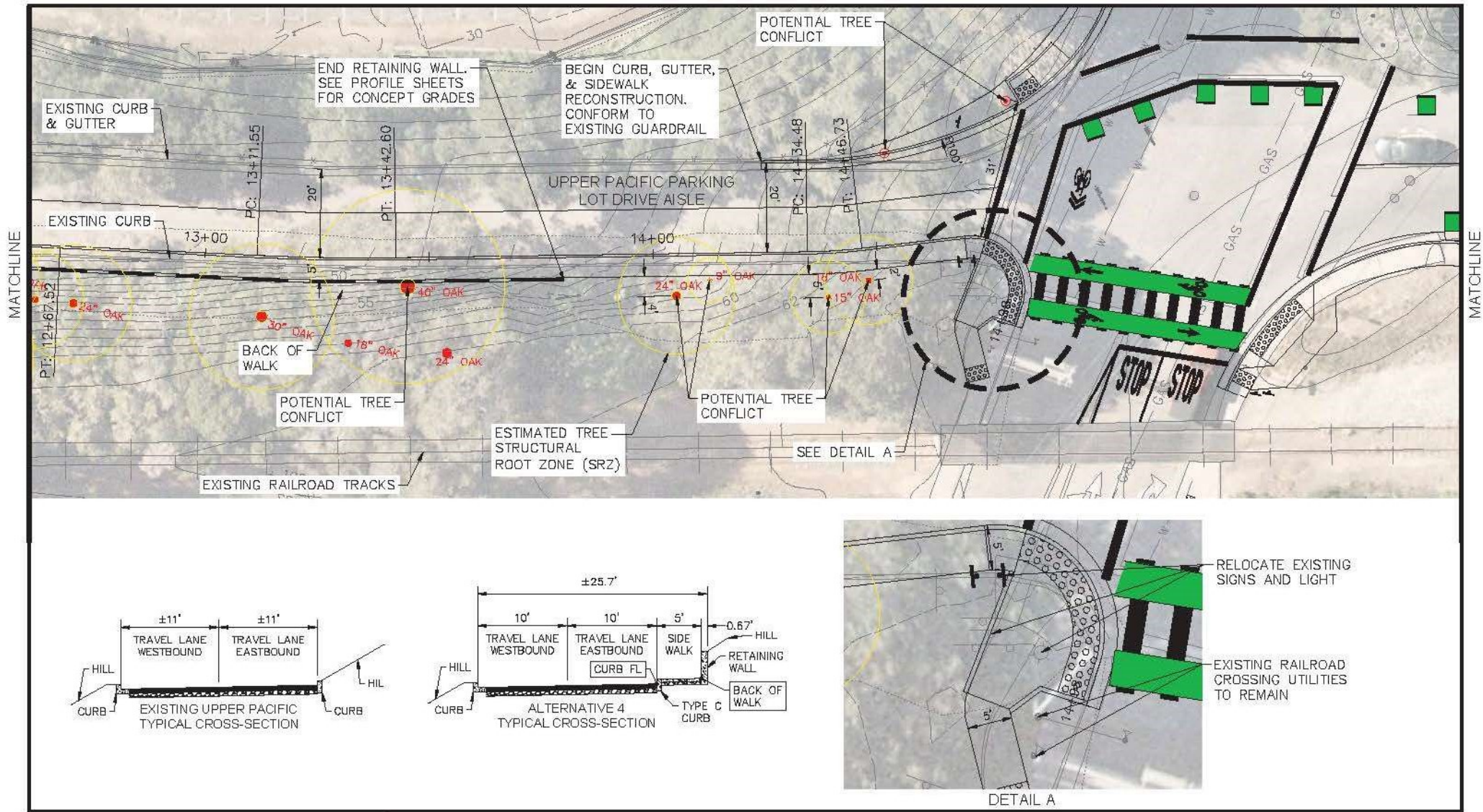
1. EXISTING GRADES AND TREES LOCATIONS ARE BASED ON 2015 SURVEY DATA FROM BOWMAN & WILLIAMS. DIMENSIONS SHOWN ARE APPROXIMATE.
2. TREE STRUCTURAL ROOT ZONE (SRZ) IS THE AREA AROUND THE BASE OF THE TREE FOR THE TREE'S STABILITY IN THE GROUND. THE SRZ IS DETERMINED BY PROVIDING 0.5- FEET OF PROTECTION FOR EVERY 1-INCH IN TREE DIAMETER AT 4.5- FEET BREAST HEIGHT.
3. TREE CRITICAL ROOT ZONE (CRZ) IS THE AREA AROUND THE BASE WHERE ROOTS ESSENTIAL FOR THE TREE'S HEALTH ARE LOCATED. THE CRZ IS LARGER THAN THE SRZ AND IS TYPICALLY 1- FEET OF PROTECTION FOR EVERY 1-INCH IN TREE DIAMETER.
4. AN ARBORIST REPORT IS RECOMMENDED TO DETERMINE TREE IMPACTS.
5. A GEOTECHNICAL REPORT IS RECOMMENDED TO DETERMINE RETAINING WALL IMPACTS.
6. SEE SHEET 3 FOR PATHWAY MATERIAL OPTIONS AT TREE ROOT ZONE.



CONCEPT LAYOUT FOR PLANNING PURPOSES
NOT FOR CONSTRUCTION

Pedestrian Pathway to Monterey Ave

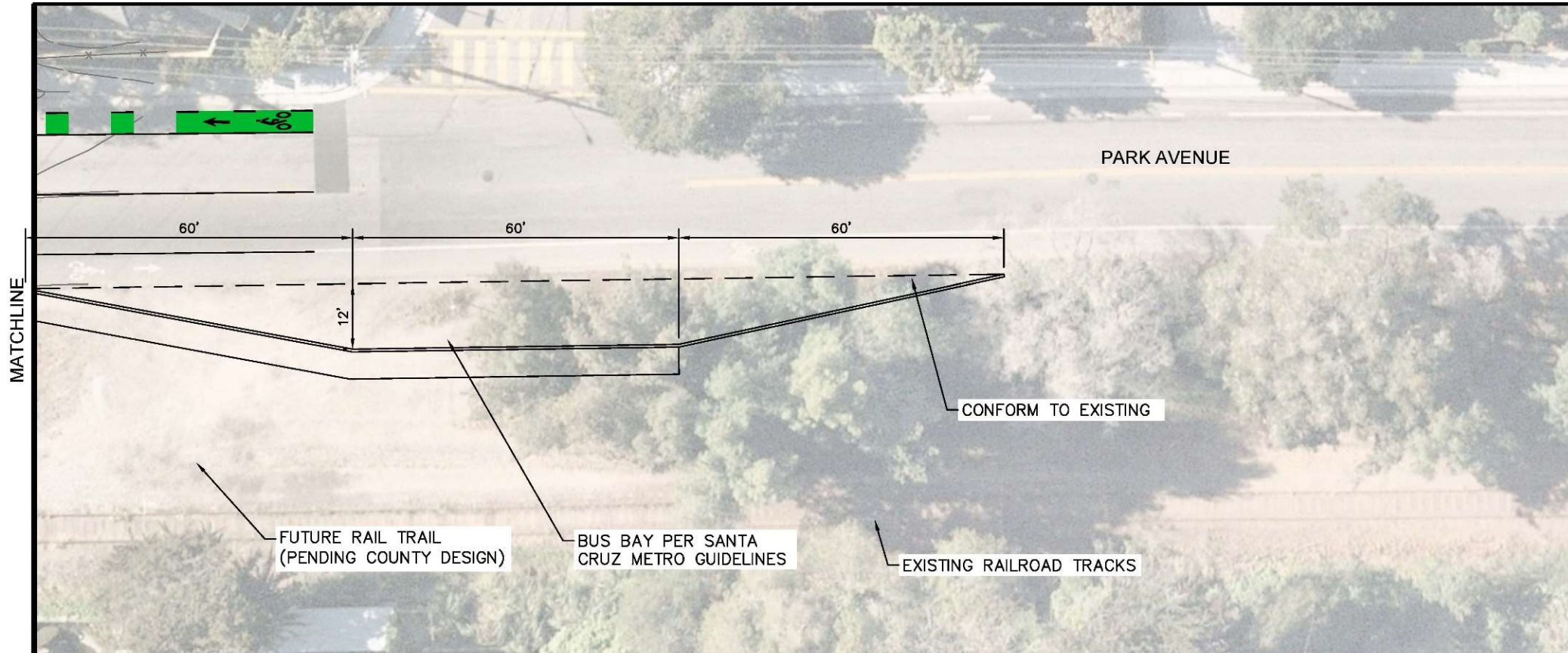
Alternative 3



CONCEPT LAYOUT FOR PLANNING PURPOSES. NOT FOR CONSTRUCTION

Pedestrian Pathway to Monterey Ave

Alternative 3



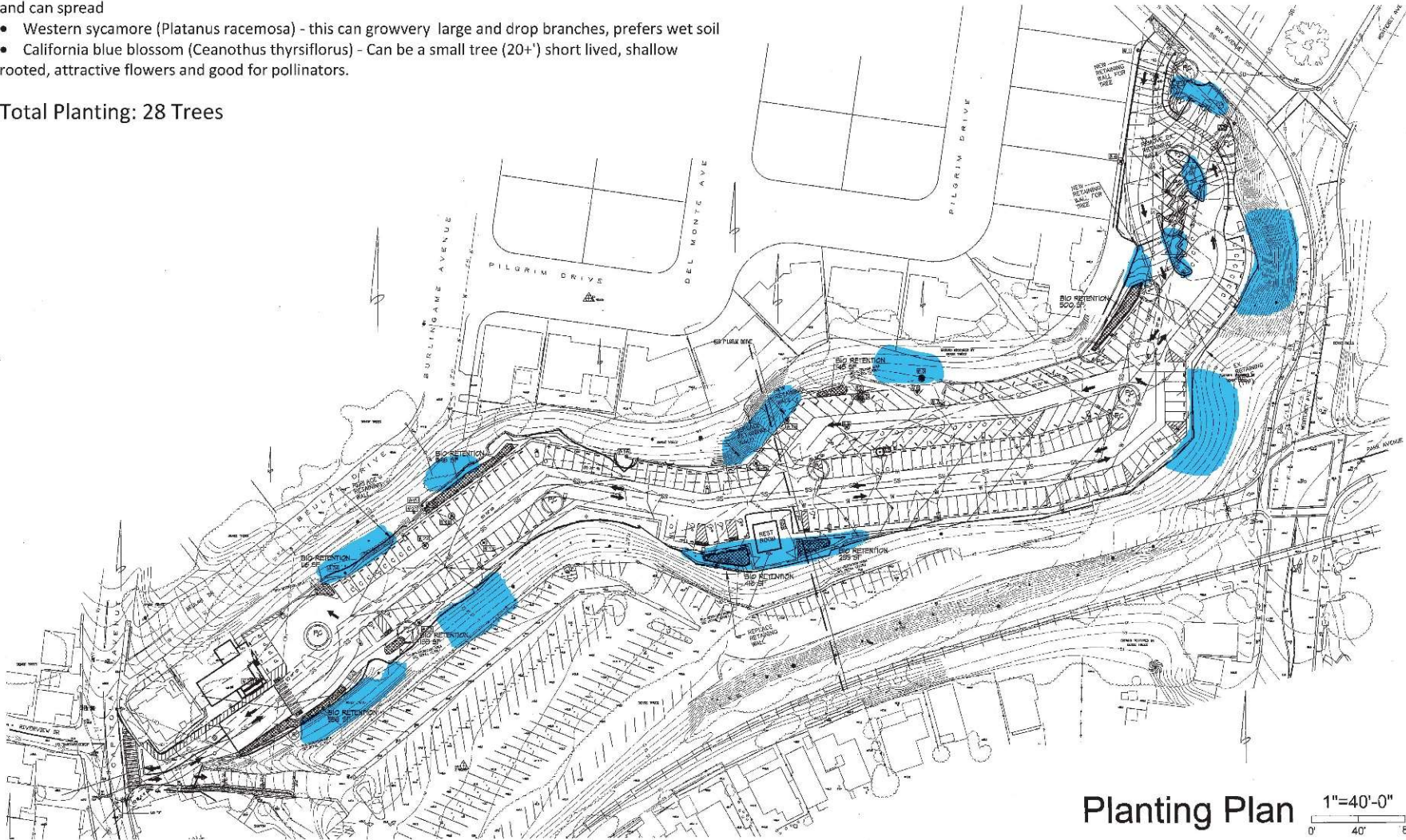
Pedestrian Pathway to Monterey Ave

Tree Replacement Plan



- California Buckeye (*Aesculus californica*)
- Coastal live oak (*Quercus agrifolia*)
- Western choke cherry (*Prunus virginiana*)
- Oregon ash (*Fraxinus latifolia*)
- Willow species (*Salix laevigata* or *stitchensis*) - would require a lot of maintenance once they mature and can spread
- Western sycamore (*Platanus racemosa*) - this can grow very large and drop branches, prefers wet soil
- California blue blossom (*Ceanothus thyrsiflorus*) - Can be a small tree (20'+) short lived, shallow rooted, attractive flowers and good for pollinators.

Total Planting: 28 Trees



Planting Plan

1"=40'-0"

0 40' 80'



GREGORY LEWIS LANDSCAPE ARCHITECT
 200 Pine Ave
 Capitola, CA 95010
 Phone: 831.426.1100
 Email: greg@greglewis.com

Pacific Cove Lower Parking Lot
 Capitola, CA

Date: 4/28/15
 Size: As Shown
 Drawn: G/L
 Job: L1



1 of 1

Pedestrian Pathway to Monterey Ave

Schedule and Budget

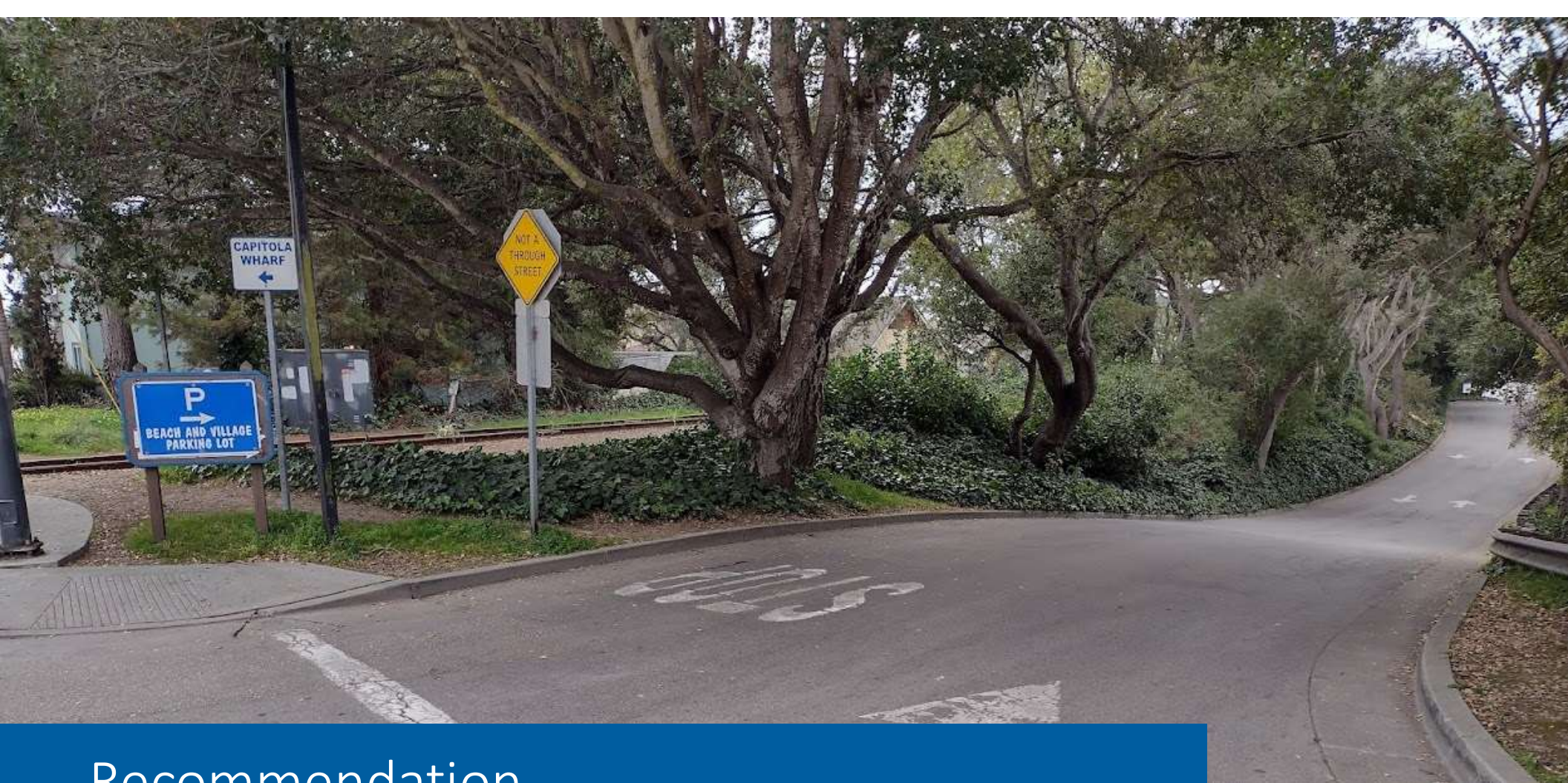


Construction late Winter to Spring of 2024

- Will return to Council for authorization to bid and approval of PS&E and CDP

Fiscal Impact

- \$300,000 budgeted (250,000 RTC, \$50,000 GF)
- \$30,000 expended
- Remaining funding sufficient to complete project

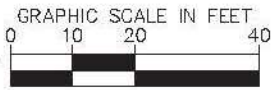
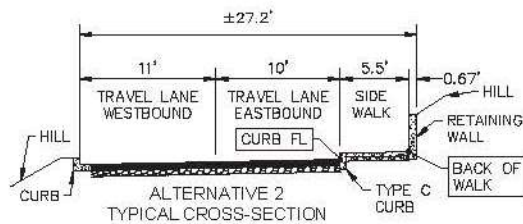
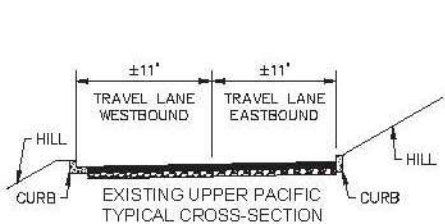
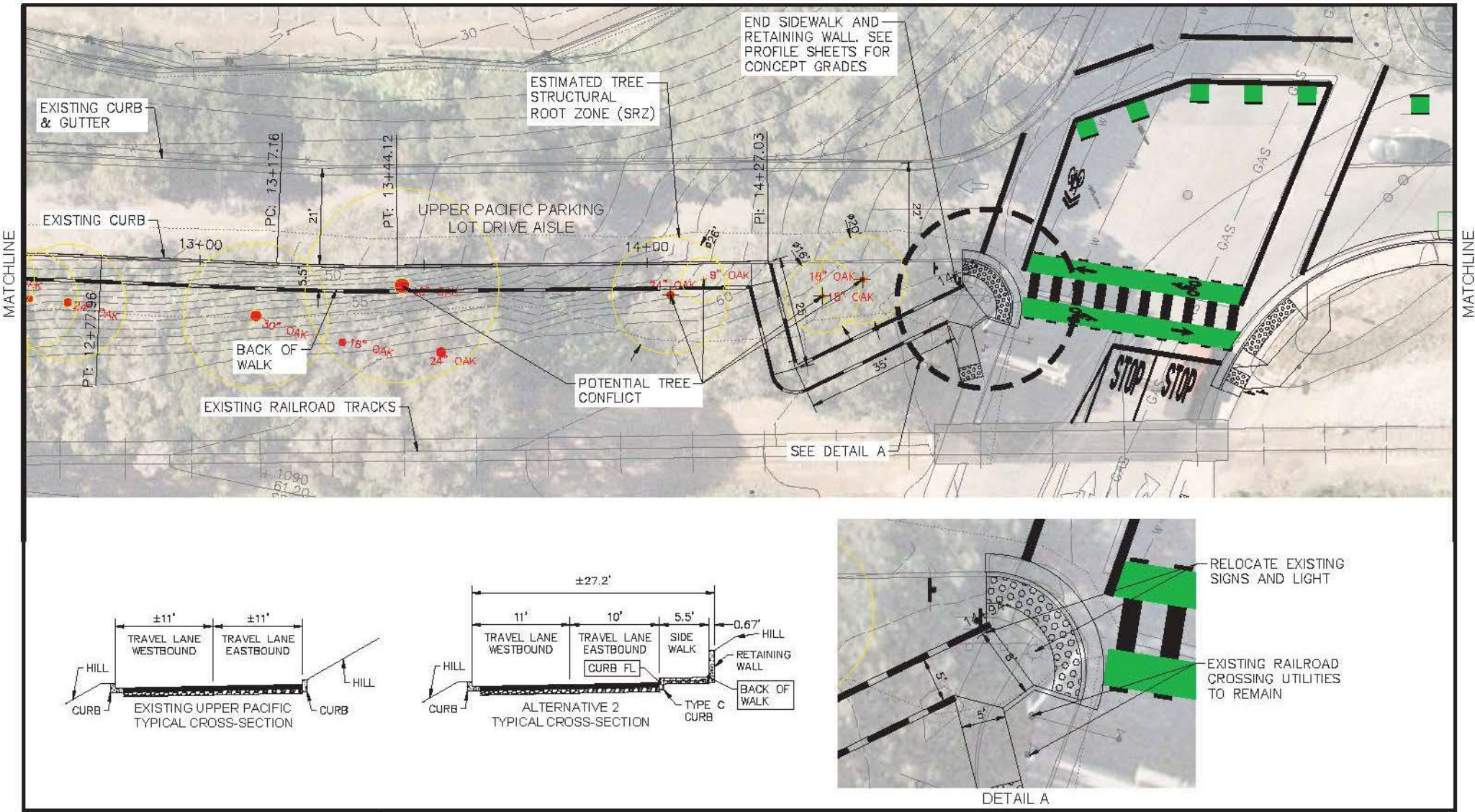


Recommendation

Direct staff to proceed with developing the final design of pedestrian pathway from the Upper Beach and Village Parking Lot to Monterey Avenue consistent with Alternative 3

Pedestrian Pathway to Monterey Ave

Alternative 2



CONCEPT LAYOUT FOR PLANNING PURPOSES. NOT FOR CONSTRUCTION