



# Conceptual Design Grand Avenue Pathway

City Council

December 11, 2025

# Grand Avenue Conceptual Design

## Background



- Pathway from Saxon to Oakland currently closed for safety
- 10/23/25 Council reviewed findings on retreat and drainage issues
  - Ongoing bluff instability continues to threaten pathway
  - Relocated, narrower pathway, is viable as an interim public access route
  - Expected usable life: several years, depending on future retreat and drainage conditions
- Direction: Conceptual realignment plan





# Grand Avenue: Phase I Conceptual Design



## Purpose of Conceptual Design

Alignment options, grading feasibility, interaction with existing fencing  
Preliminary construction costs

**Helps determine whether to move forward with Construction Documents**

## Scope of Work (SSA Landscape Architects)

- Coastal access/pathway design experience
- Topographic survey + base map
- Initial conceptual plan: pathway location, materials, cost estimate
- Option to provide multi-phase design and construction support

## Cost & Timeline

- \$13,000 (CIP-funded)
- 8–10 weeks from authorization
- Final Concept Plan to Council Spring 2026

# Grand Avenue: Future Phases (For Reference Only)



## Phase 2 – Construction Documents

- 100% PS&E
- Engineering of grading and drainage plans
- \$28,000

## Phase 3 – Construction Administration

- \$3,000

## Phase 4 – Add Alternates

- Public Meetings
- \$3,000

Full design effort estimated at up to **\$47,000**

# Grand Avenue Conceptual Design

## Fiscal Impact



### Sales Tax Performance

- Current-year sales tax revenues tracking close to budget expectations
- No significant overages or shortfalls

### Funding Approach

- No anticipated costs savings to active CIP
- New capital commitments—including this project—generally rely on CIP reallocations, not General Fund.

# Grand Avenue Conceptual Design

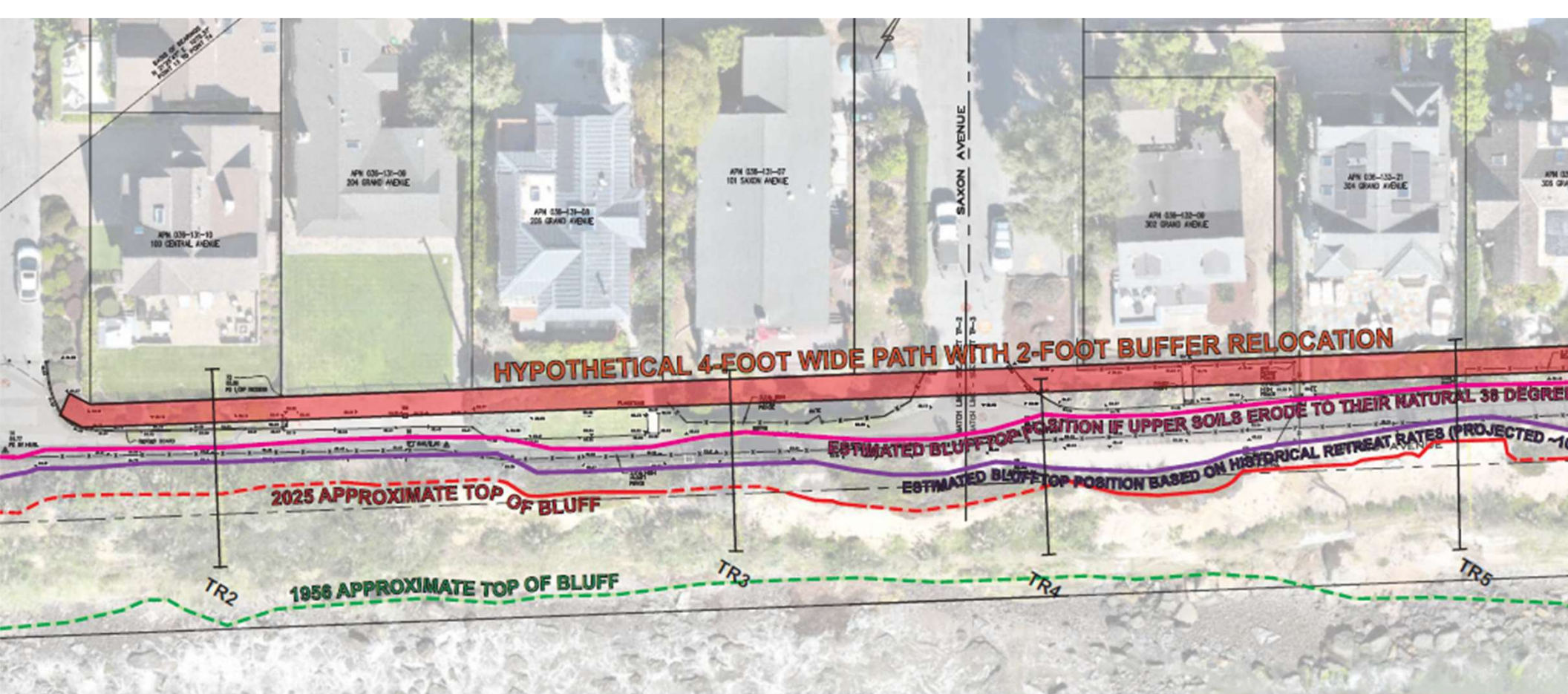
## Fiscal impact — CIP Reallocations



Funding Source	Current Budget	Proposed Amendment	Net Difference
RRFB	\$10,000	No Change	—
Esplanade Park	\$50,000	\$39,200	-\$10,800
Park Avenue	\$60,000	No Change	—
Monterey Park Playground	\$10,000	\$7,800	-\$2,200
Economic Development	\$20,000	No Change	—
<b>Grand Ave Pathway (NEW)</b>	<b>\$0</b>	<b>\$13,000</b>	<b>+\$13,000</b>

### Non-CIP Funds Available

- Council Training Budget: \$15,000
- Employee Down Payment Assistance: \$18,500 remaining
- Contingency, Emergency, Facilities, General Fund: all below target



## Recommendation

Authorize City Manager to execute a professional services agreement with SSA Landscape Architects, Inc. for Phase 1 Conceptual Design of the Grand Avenue Pathway in an amount not to exceed \$13,000, with funding from the Capital Improvement Program (CIP) Fund