

City of Capitola Strategic Plan Overview City Council Presentation

February 8, 2024



Agenda



- ▲ Introductions
- ▲ Strategic Plan Overview
- ▲ Project Approach and Timeline



Project Team



Seth Hedstrom
Project Principal



Michelle Kennedy
Project Manager and
Lead Facilitator



Karen Whichard
Facilitator



**Maddison Powers
Spencer**
Facilitator and Research
Analyst

BerryDunn's
300+ Government
Consultants



On-call, as-needed support



Access to broad
specialization



Internal and external
connections to DEI expertise



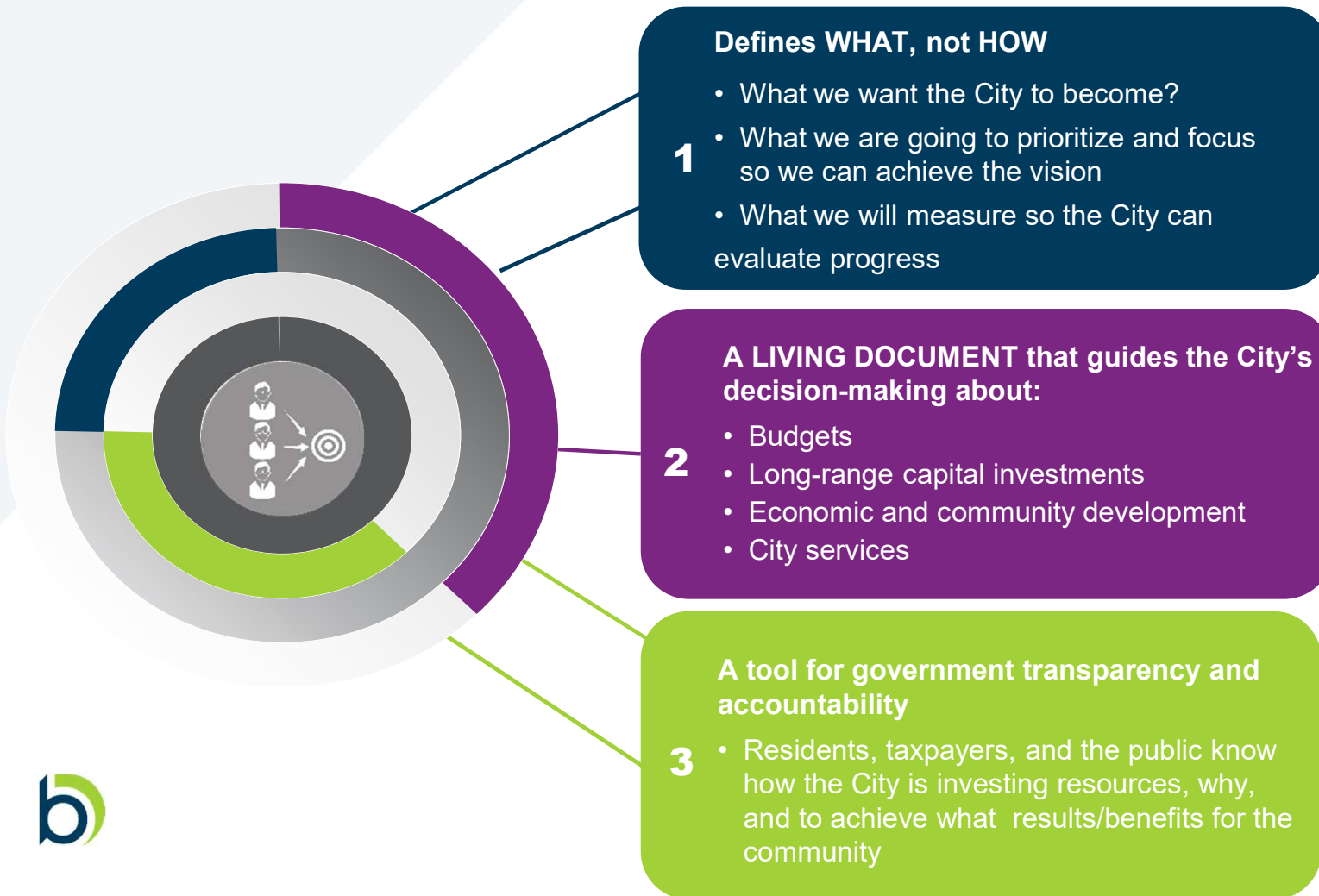
A comprehensive
complement to anything the
City may need



Project Phases



What is a Strategic Plan?



The Strategic Plan defines **WHAT** the City will prioritize and focus on.

HOW the City carries out its strategy to reach the vision, priorities, and goals is defined in an **implementation plan**.

This implementation plan is developed by staff **AFTER** the Strategic Plan is complete.

Project Approach: Community Engagement and Environmental Scan

An environmental scan presents current and anticipated events and their relationships within an organization's internal and external environments. The scan serves as a basis of determining the future direction of the organization.



Identify potential opportunities, challenges, and trends that can drive the City's focus and effectiveness.



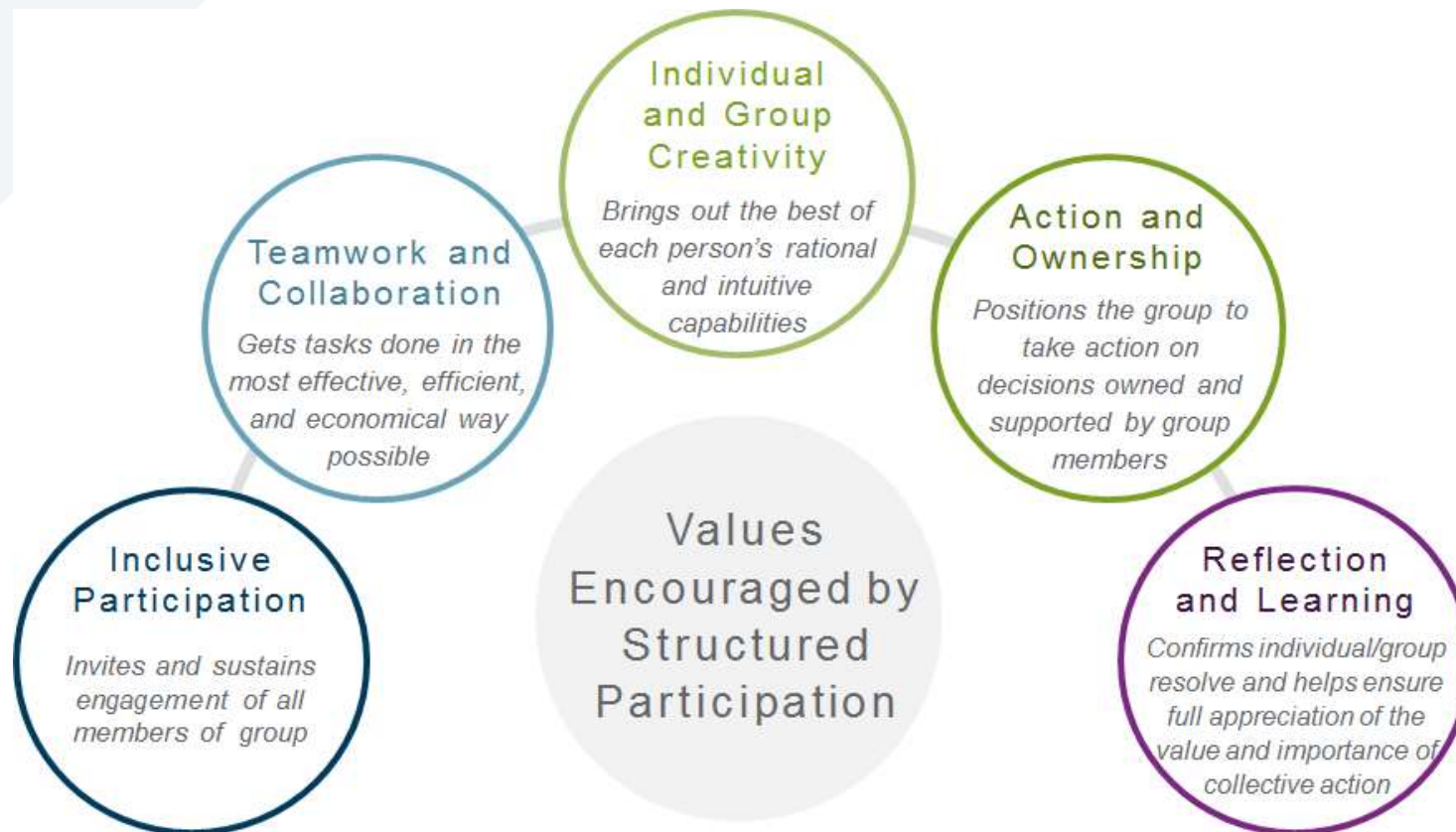
Provide everyone involved in strategic planning with a shared understanding of the City's current environment.



Help City leaders successfully navigate the forces and obstacles that can hinder the achievement of a shared vision.

Project Approach: Facilitation Methodology

Our facilitation methodology emphasizes structured participation that creates a clear intention, helping members of the group align with one another and reach consensus.



Project Approach: Plan Development

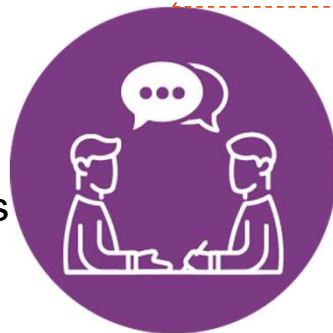


City Council

- Develop
 - Mission
 - Vision
 - Guiding Principles
 - Strategic Priorities and Goals

City Leadership and Staff

- Refine the Council's work
- Develop
 - Strategic Objectives
 - Performance Measures
 - Implementation plan



Capitola Community

- Identify priorities for City focus
- Assist in Capitola vision



Project Approach: Key Activities

Community and Staff Engagement

- Social Pinpoint
- Community survey
- Interviews and focus groups with community leaders, elected officials
- Interviews with staff
- Virtual community workshop

Plan Development Sessions

- City Council
- Leadership and Staff

Final Strategic Plan

- Graphically Designed Version of the Strategic Plan



What Sources Inform the Strategic Plan?

Information from various sources will be used to identify the community's priorities:



Interviews with diverse community members, and community workshop



Social Pinpoint Community Engagement Platform



Community survey results



Demographic and economic data



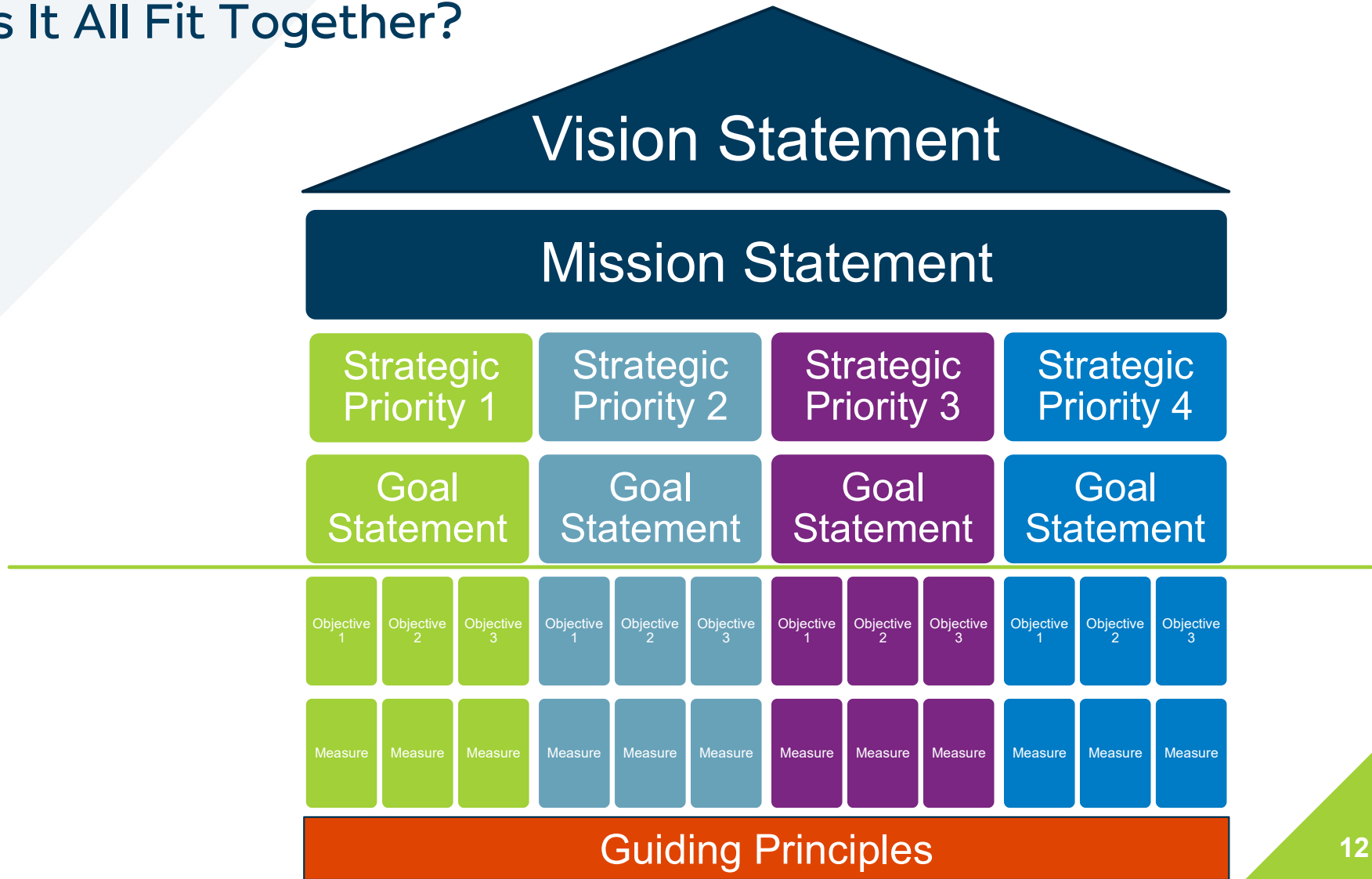
Current existing City plans

Mission, Vision, Guiding Principles, and Strategic Priorities

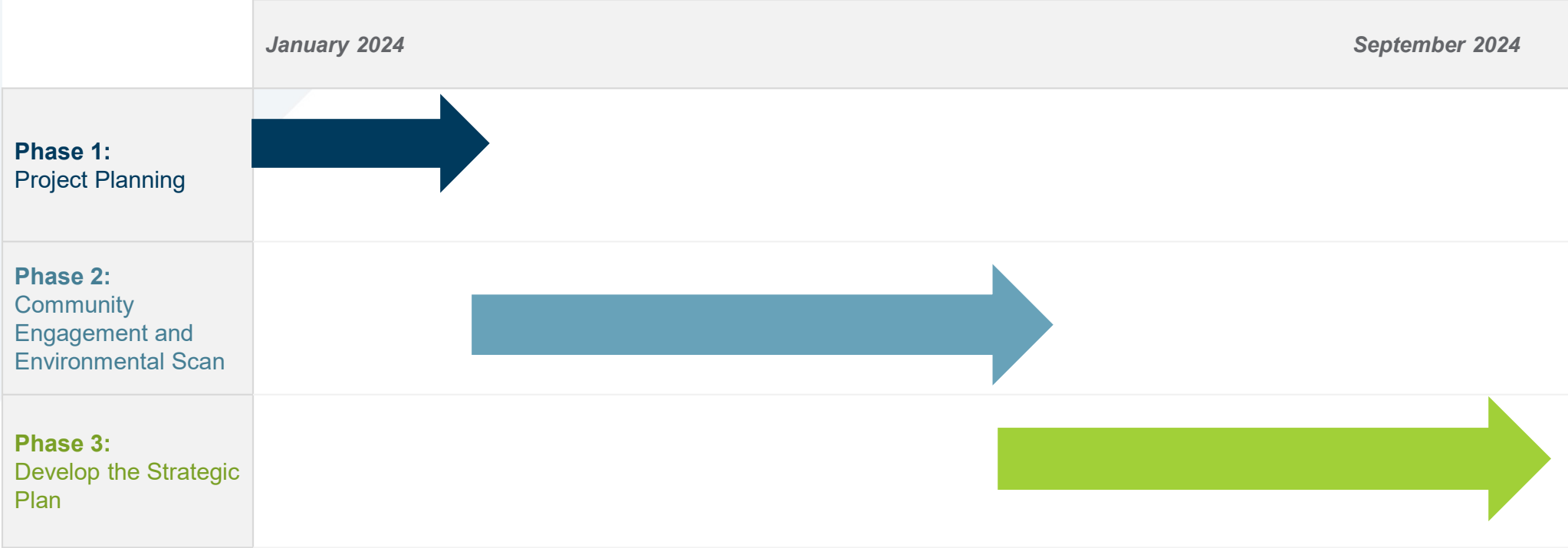
How are they connected?



How Does It All Fit Together?



Project Approach: Timeline





Questions and Comments