



# Wharf Resiliency and Public Access Project

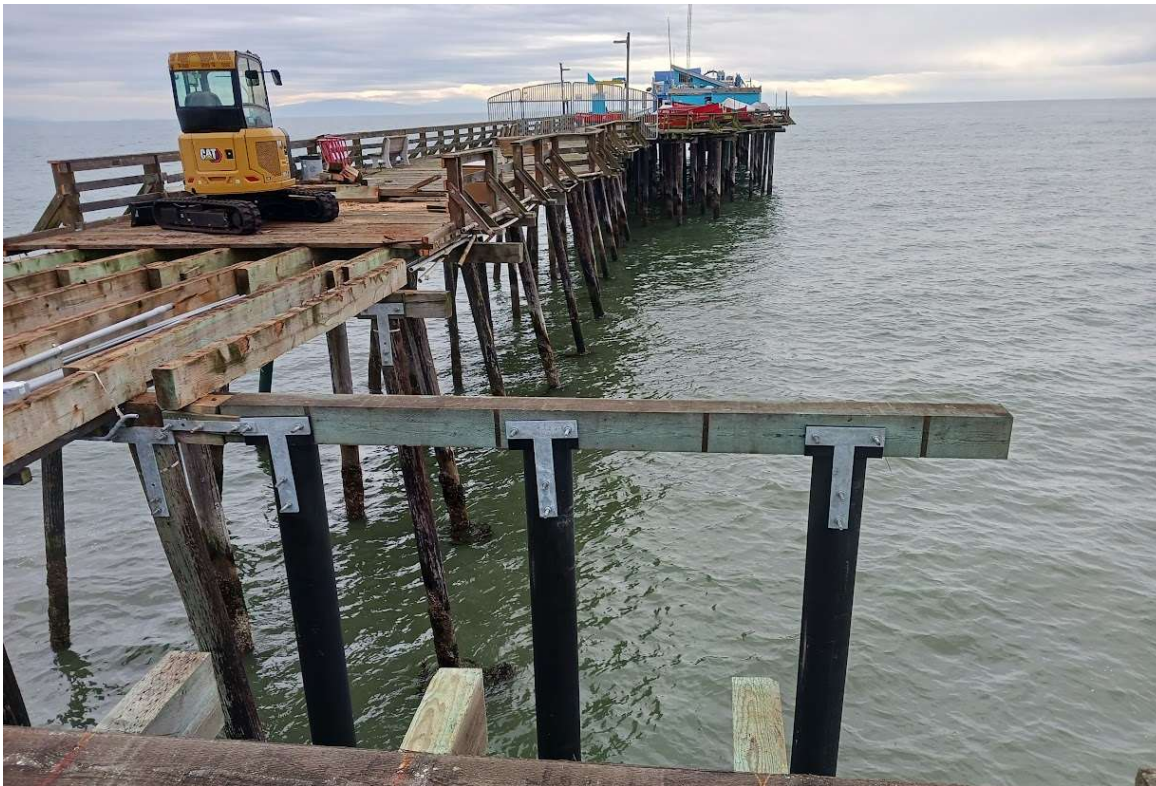
---

City Council

February 8, 2024



# Project Overview - Wharf Resiliency and Public Access

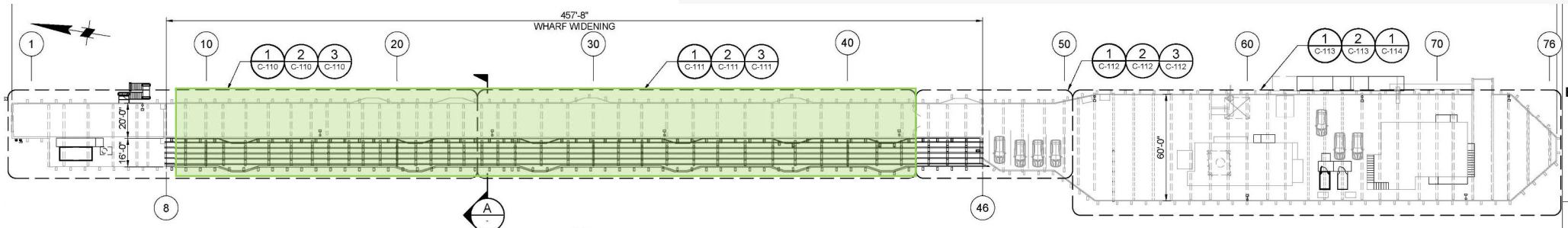
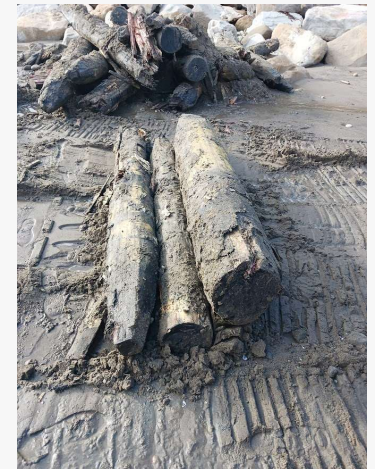


- Project Key Elements
  - Widening, piling fixes, deck replacement, restroom addition
  - Ensure the Wharf's long-term resilience
- Contractor: Cushman Contracting
- Commencement Date: September 2023

# Progress Update

## Completed

- Repair of demolished trestle
- Widening progressing, currently at Bent 41 of 46
- Removal of old piles





## Progress Update

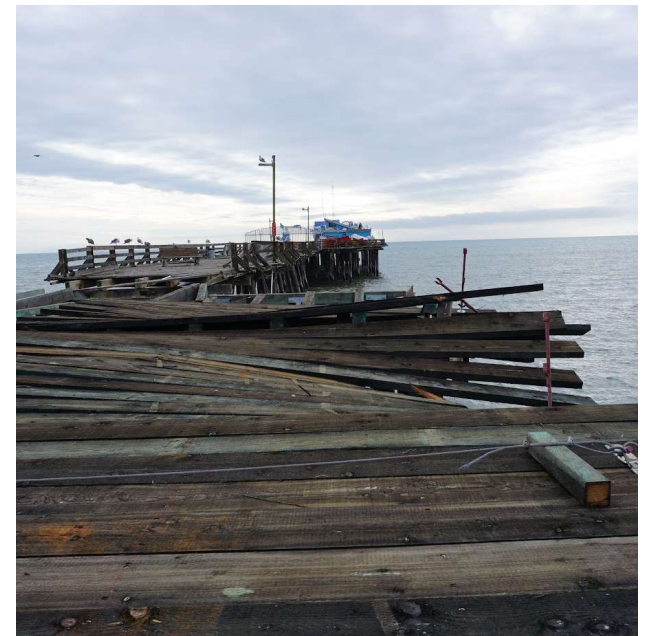
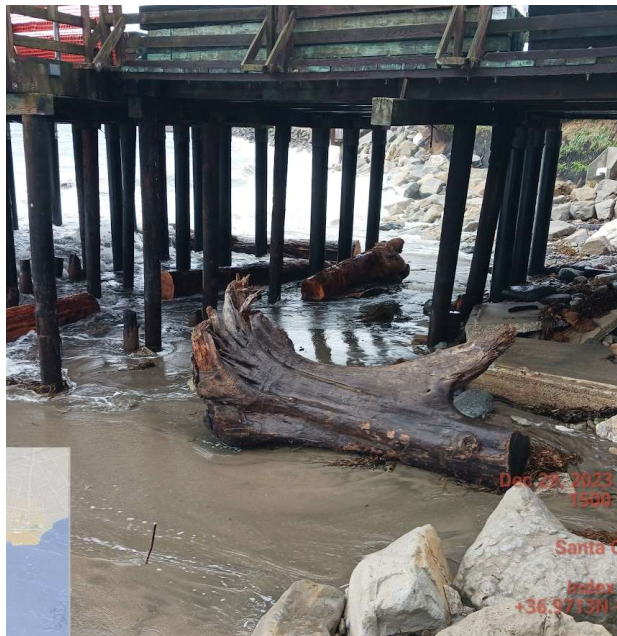
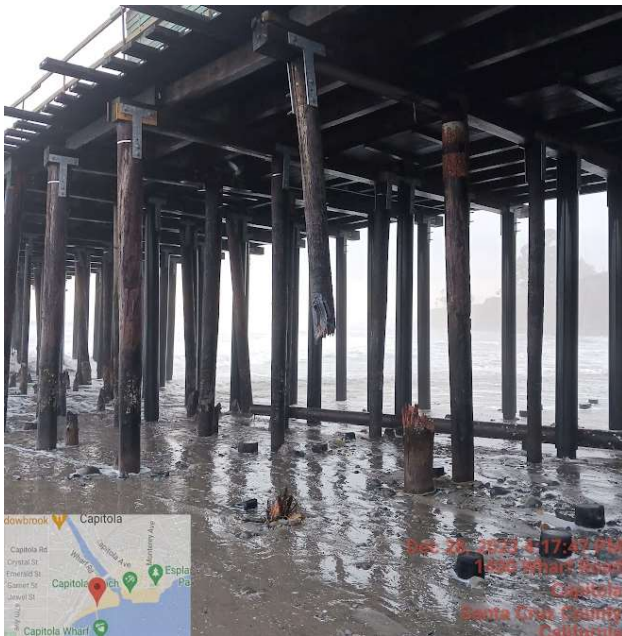
### Completed

- Restroom installation



# December 28, 2023 Storm Event - Damages

- Broken Piles
- Framing Damage and Deformation
- Hazardous Deck Conditions



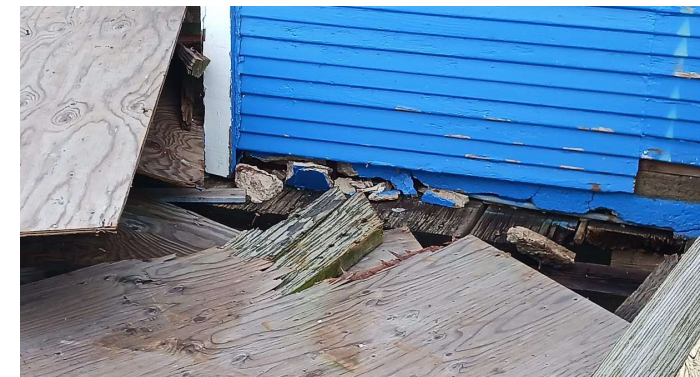




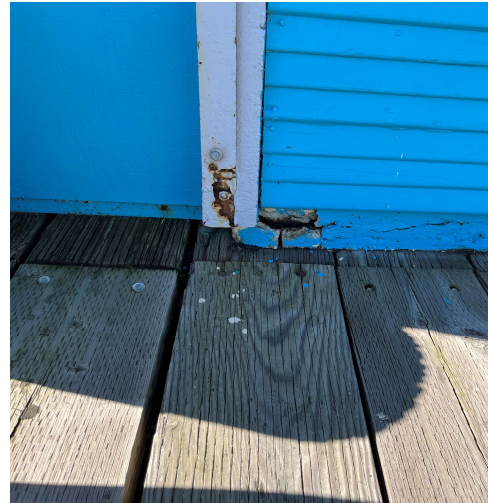
## Building Assessments

### Wharf House Restaurant

- Severe Structural Damage
- Collapsing Seaward-facing Wall
- Total Loss





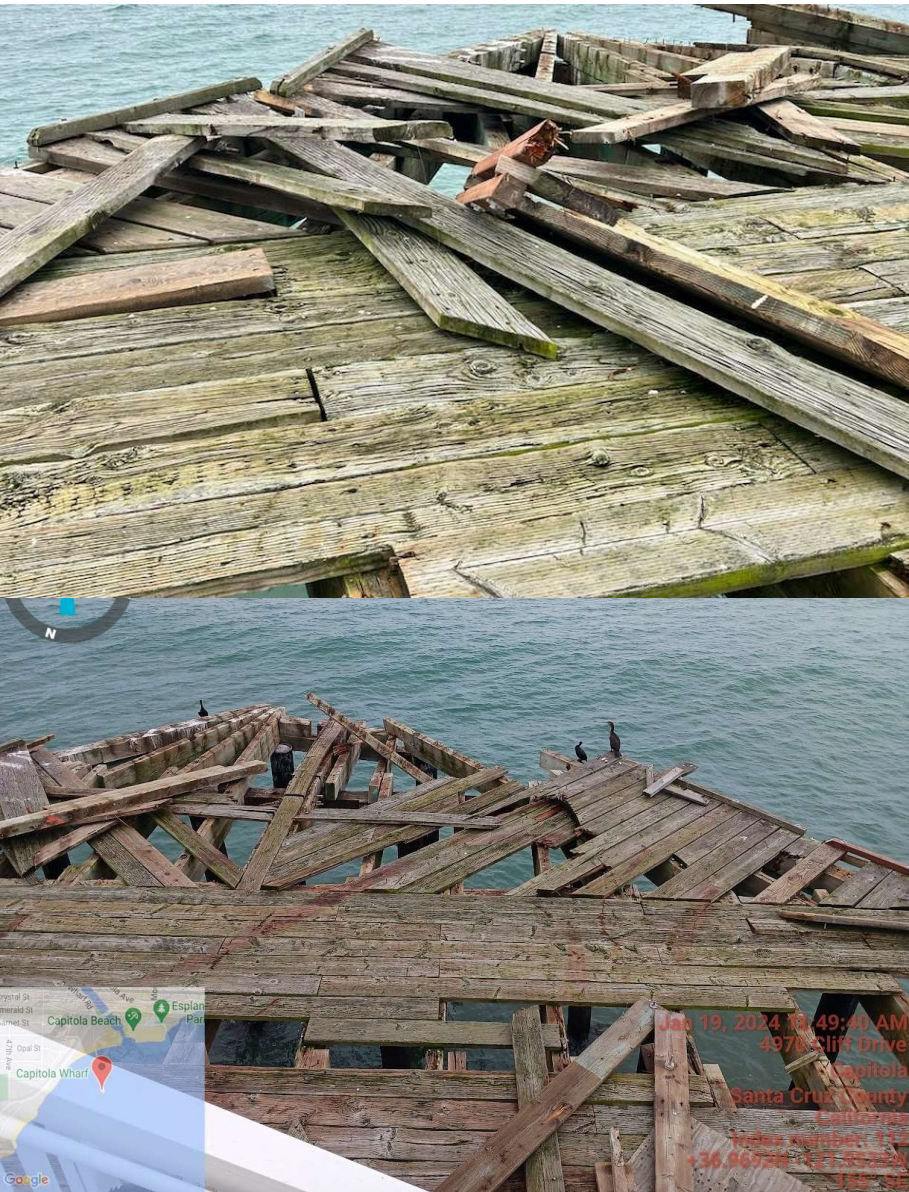


## Building Assessments

### Bait Shop

- Significant Foundation Damage
- Hazmat containment
- Building Code compliance





---

## Challenges and Ongoing Assessments

- Challenges
  - Head of Wharf assessments ongoing
  - Wharf House Restaurant demolition and Bait Shop repairs
  - Anticipated Weather Conditions
    - Rainy Weather and Large Swell Events
- Ongoing Assessments and Adaptive Measures



## Fiscal Impact

### Uncertainties

- Unquantified repairs at the head of the Wharf
- Funding from California Natural Resources Agency on hold

\*final costs expected range \$400k-\$700k

<u>Funding</u>	
Coastal Conservancy Grant	\$1,900,000
HUD Grant	\$3,500,000
Measure F	\$2,500,000
Insurance from December 2023 Storm Damages	\$1,000,000
California Natural Resources Agency	TBD
<b>Total Project Funding</b>	<b>\$8,900,000</b>
<u>Expenses</u>	
Initial Contract (inclusive of January 2023 Storm Damage)	\$7,740,000
Change Orders	\$361,000
Storm Damage (December 2023)	\$213,000
CWEP Allocation	\$250,000
Building demolition/repairs, repair to Wharf structure*	TBD
<b>Total Project Costs to date</b>	<b>\$8,564,000</b>
<u>Available funds</u>	
Remaining Contingency	\$336,000

# Next Steps

- Timeline
  - Construction completion expected in Fall 2024
- Next Focus
  - Completion of widening to Bent 46
  - Coordination with Wharf businesses
  - Assessment and mitigation of damages
- Contingency:
  - Remaining Contingency: \$336,000
- Separate engagement process following Wharf Resiliency project to envision future for Wharf House site





---

## In Summary

- Progress Amidst Challenges
  - Despite setbacks, notable progress achieved
  - Completed repairs and widening milestones
- Remaining Challenges
  - Head of the Wharf assessments ongoing
  - Building removal
  - Funding uncertainties
- Looking Ahead
  - Stay vigilant against weather events
  - Adaptive measures in the coming months