



Local Roadway Safety Plan (LRSP)

City Council
March 26, 2026

Local Roadway Safety Plan

Recommended Action



Receive informational presentation

Provide feedback on Draft LRSP

Will return for adoption at a later meeting

No formal action required today

Local Roadway Safety Plan

What is the LRSP



Program Overview

- Data-driven safety planning tool
- Supported by FHWA and Caltrans
- Focus on reducing **fatal and severe injury crashes**

Identifies

Crash patterns
Safety risk factors
Potential improvements

Supports

- Safer streets for all users
- Data-driven decision making
- Competitive grant applications
- Positions City for grant funding (HSIP, SS4A)

Local Roadway Safety Plan

How the Plan Was Developed



5 years of crash data analysis

Review of

- Roadway conditions
- Traffic volumes
- Behavioral factors

Community Engagement

- Public meeting
- Online survey
- Interactive map

Table 2 - Capitola OTS Ranking (2023)

Crash Category	Victims Killed or Injured	OTS Ranking
Total Fatal and Injury	30	30/74
Alcohol Involved	9	10/74
Had Been Drinking Driver < 21	1	6/74
Had Been Drinking Driver 21 – 34	0	73/74
Motorcycles	1	50/74
Pedestrians	5	5/74
Pedestrians < 15	0	70/74
Pedestrians 65+	3	1/74
Bicycle	11	2/74
Bicyclist < 15	3	2/74
Composite	29	10/74
Crash Category	Fatal or Injury Crashes	OTS Ranking
Speed Related	13	5/74
Nighttime (9:00pm – 2:59am)	2	28/74
Hit and Run	4	4/74
Type Of Arrests	Arrests	OTS Ranking
DUI Arrests	33	44/74

Local Roadway Safety Plan

Key Safety Trends



What We're Seeing in Capitola

- High share of severe crashes involve:
 -  Pedestrians
 -  Bicyclists
- Contributing factors:
 - Speeding
 - Impaired driving
 - Right-of-way conflicts

What the Community Told Us

- Top concerns:
 - Speeding
 - Unsafe crossings
 - Bicycle safety / e-bike behavior
- Key corridors with mixed use

Local Roadway Safety Plan

What the Plan Recommends



Infrastructure Improvements

- Enhanced crossings
- Traffic calming
- Visibility improvements
- Bike facility upgrades

Programmatic Strategies

- Education & outreach
- Enforcement strategies

Case Study Locations

- Locations with crash patterns
- Shows how improvements could be applied

Local Roadway Safety Plan

Case Study Example: Capitola Rd & Clares St



What We're Seeing

- Mix of crash types, including bicycle-related crashes
- Turning and crossing conflicts
- Driver behavior (speeding, impairment)
- Visibility challenges

Recommended Improvements & CRF

- Leading Pedestrian Interval (~60%)
- Signal visibility upgrades (~15%)
- Advanced stop bars (~15%)

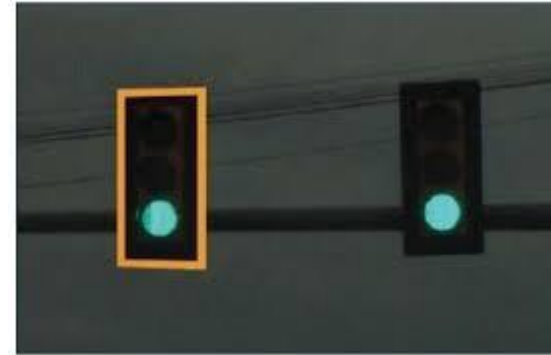
Local Roadway Safety Plan

Case Study Example: Capitola Rd & Clares St



Leading Pedestrian Interval (\$\$)

Head start for pedestrians before vehicles



Retroreflective Signal Backplates (\$)

Improves signal visibility



Advanced Stop Bars (\$)

Sets vehicles back from crosswalks

Local Roadway Safety Plan Implementation & Funding



Prioritization based on

- Safety benefit
- Cost
- Feasibility

Funding Opportunities

- HSIP
- SS4A
- ATP
- SB1

Potential future item

- Safety goal / Vision Zero-type resolution

Local Roadway Safety Plan

Next Steps



Finalize Plan

- Council feedback on draft
- Finalize LRSP
- Return for adoption

Implementation & Integration

- Integrate into capital planning
- Integrate into grant applications