



# Coastal Rail Trail Segments 10 & 11

---

City Council  
October 26, 2023





# Coastal Rail Trail Segments 10 & 11

## Role of City of Capitola

1. Presentation by Regional Transportation Commission and County of Santa Cruz
2. Role of City
3. City Council Questions
4. Public Comment
5. Discussion and Deliberation



# Coastal Rail Trail Segments 10 & 11

## Role of City of Capitola

Insert County and RTC  
Presentation Here



# Coastal Rail Trail Segments 10 & 11

## Role of City of Capitola

What is Capitola's Role in the review of the rail trail?



# Coastal Rail Trail Segments 10 & 11

## Role of City of Capitola

### California Environmental Quality Act (CEQA)

Ensure that all significant impacts of the project are disclosed, and alternatives and mitigation measures are identified and considered.

Environmental Impact Report (EIR)

Lead Agency: Santa Cruz County

Responsible Agencies: RTC and City of Capitola



# Coastal Rail Trail Segments 10 & 11

## Role of City of Capitola

Capitola is a Responsible Agency within the EIR

1. Consultation prior to EIR.
2. Review EIR.
  - Submit comments (optional)
    - Support Letter
    - Shortcomings of EIR or additional alternatives
3. May challenge inadequate EIR
4. May adopt alternatives or mitigation measures for parts of the project that it decides to finance, carry out, or approve.
5. Within discretionary approval/permits, may issue separate findings and impose mitigation



# Coastal Rail Trail Segments 10 & 11

## Role of City of Capitola

Draft EIR review by Capitola staff.

1. Preference for Design Option A with the trail located on the Capitola Trestle.
2. Improvements necessary between two end points through Capitola Village.



# Coastal Rail Trail Segments 10 & 11

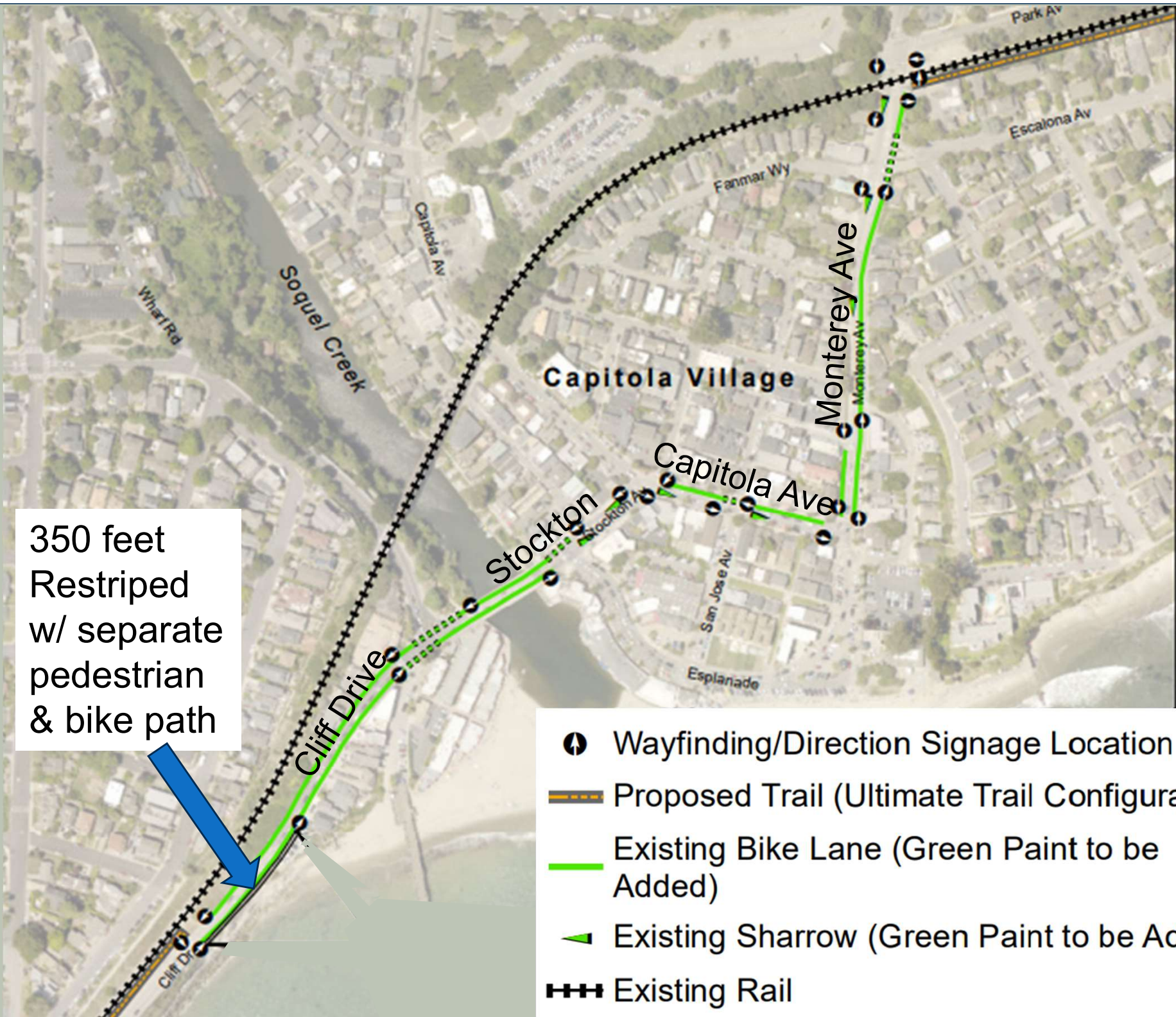
## Role of City of Capitola

### Improvements:

- Revising lanes for 350-foot-long portion of Cliff Drive to allow separate 4-foot-wide pedestrian path on the coastal side adjacent to the Class II bike lane;
- Re-paint white striping and adding green pavement painting to the existing Class II bike lanes; and
- Installing sharrow markings where bicycles and vehicles share the lane.







350 feet  
Restriped  
w/ separate  
pedestrian  
& bike path

-  Wayfinding/Direction Signage Location
-  Proposed Trail (Ultimate Trail Configuration)
-  Existing Bike Lane (Green Paint to be Added)
-  Existing Sharrow (Green Paint to be Added)
-  Existing Rail



# Coastal Rail Trail Segments 10 & 11

## Role of City of Capitola

Not included in Project:

- ADA improvements in the Capitola Village
- New sidewalks on Cliff Drive



# Coastal Rail Trail Segments 10 & 11 Role of City of Capitola

## Consolidated Coastal Development Permit (CDP)

- Consolidated Review by Coastal Commission of both segments instead of Planning Commission review for Capitola portion.
- Reviewed for consistency with the Coastal Act rather than Capitola's Local Coastal Program.



# Coastal Rail Trail Segments 10 & 11 Role of City of Capitola

Public comments made tonight are specific to Capitola's role and will not be responded to within the County EIR.

Opportunity to submit comments on Draft EIR:

County of Santa Cruz Public Meeting  
Segments 10 & 11 DEIR  
Thursday, November 16<sup>th</sup>  
5:00 to 7:30 p.m.

See County of Santa Cruz website for meeting details.



# Coastal Rail Trail Segments 10 & 11

## Role of City of Capitola

Request for Feedback:

1. Should staff prepare a comment letter on the EIR?
2. Will City consent to a consolidated CDP at this time?