

Coastal Rail Trail Segments 10 + 11 Project Update

Overview - Coastal Rail Trail

Project Benefits

Project Design

Capitola Village & Trestle

Design Options

Schedule, Next steps & permitting

**Rob Tidmore, County of Santa Cruz
Grace Blakeslee, SCCRTC**



Monterey Bay Sanctuary Scenic Trail

- Trail Master Plan
- 50-mile trail network
- Connects to Monterey County
- 32-mile Coastal Rail Trail/Santa Cruz Branch Line
- Adopted by City of Capitola in 2015



The Coastal Rail Trail

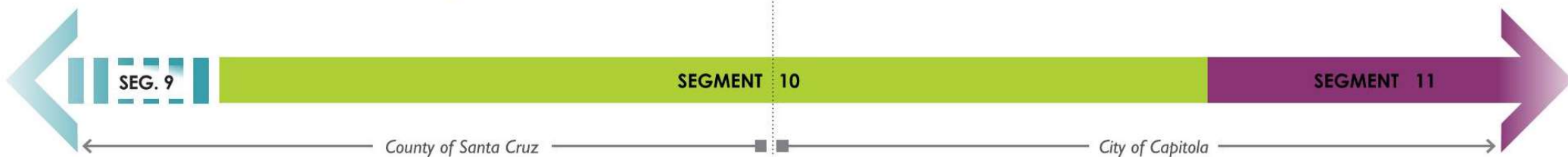
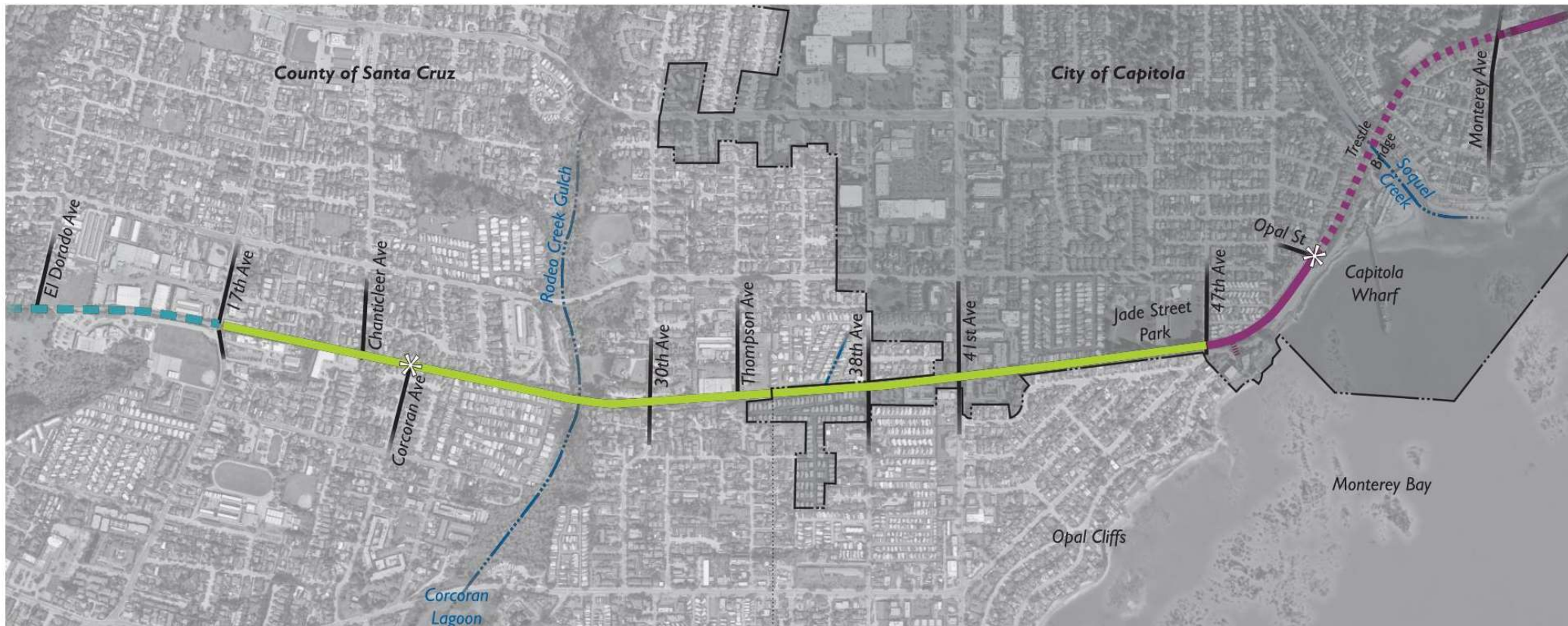


PROJECT STATUS

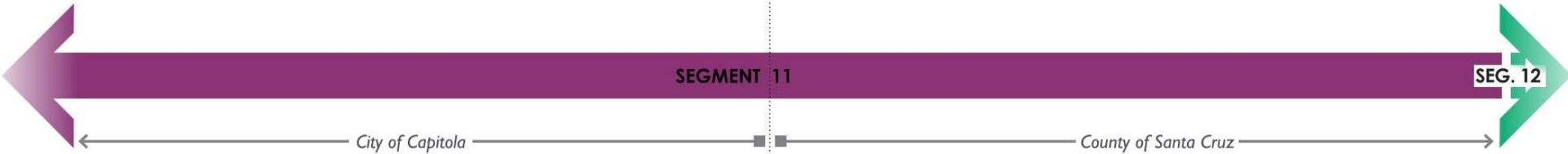
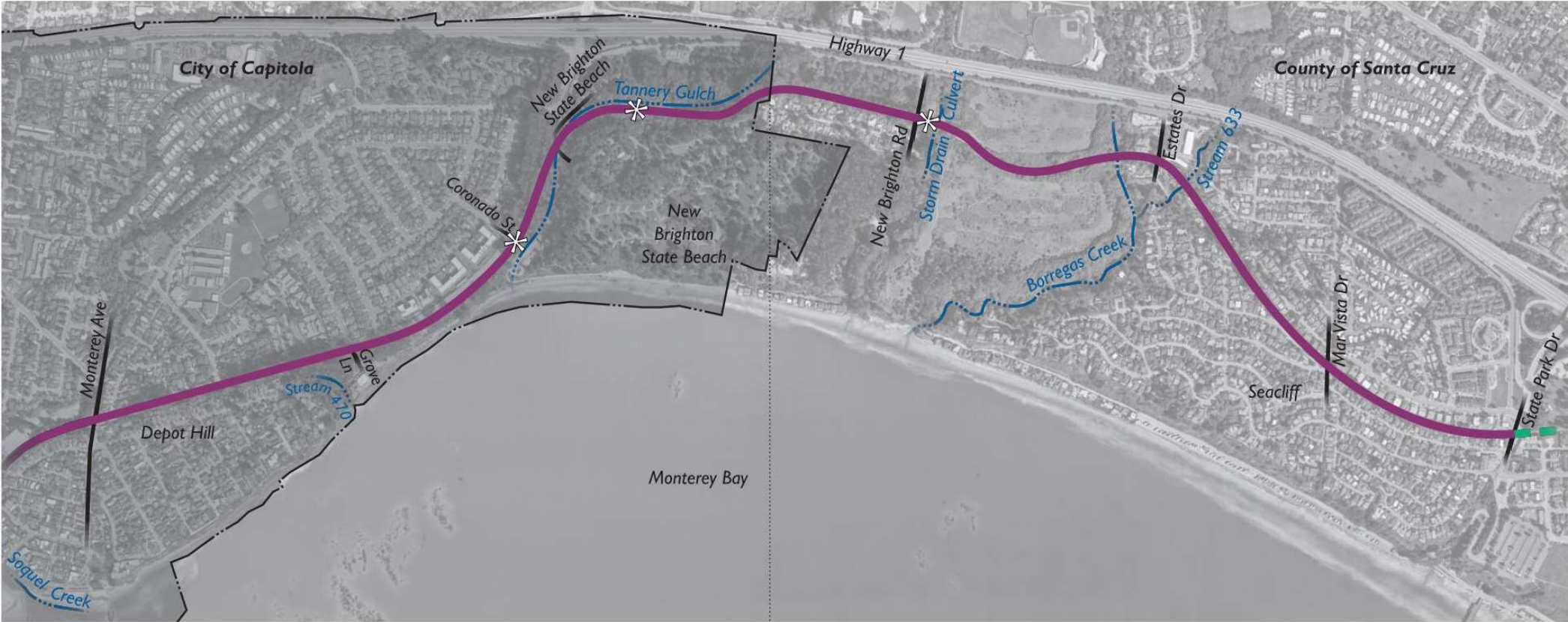
- Under Development
- Construction Funded
- Completed
- Existing Wilder Ranch Path

Updated December 2022

Coastal Rail Trail – Segments 10 & 11



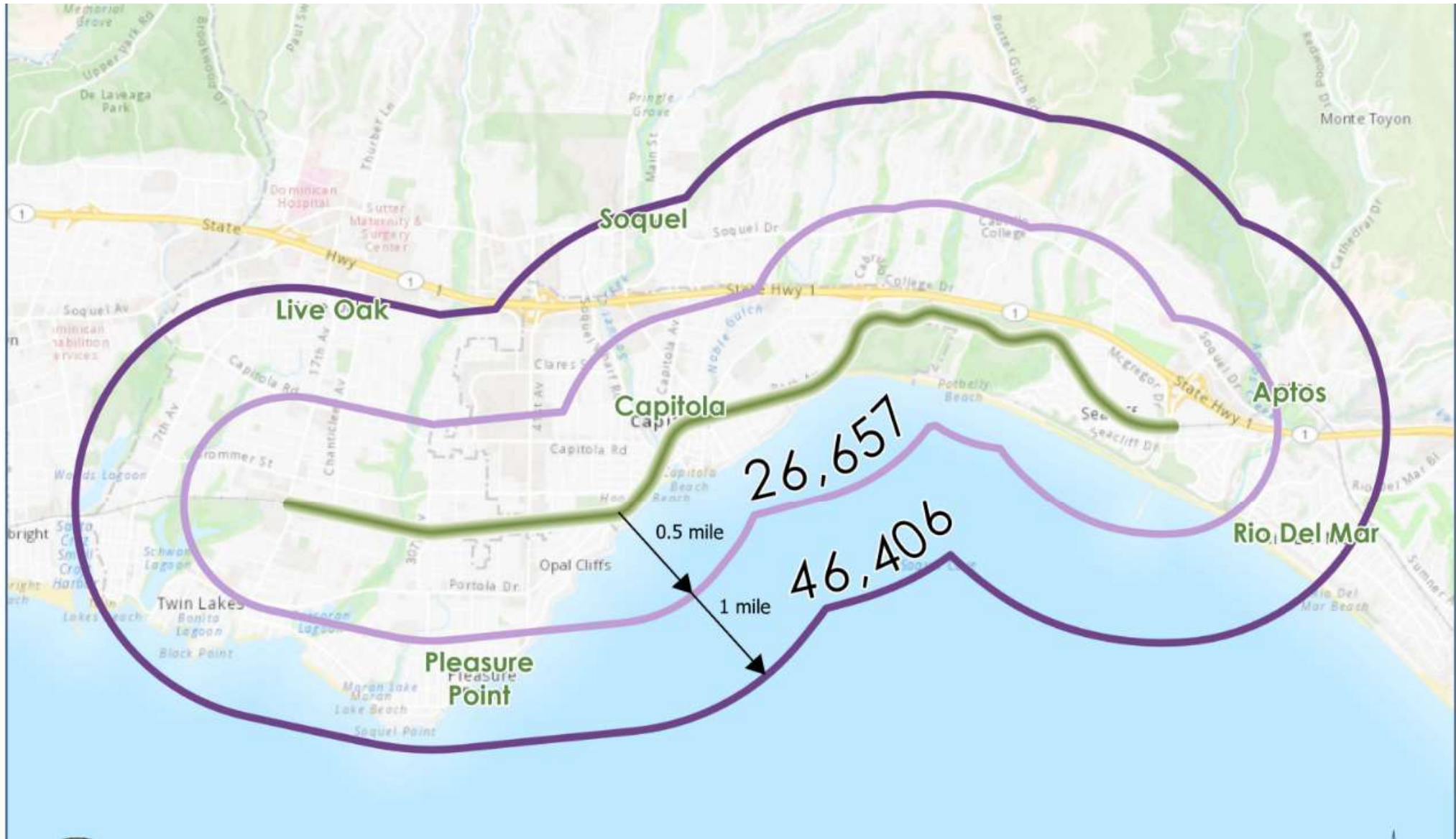
Coastal Rail Trail – Segments 10 & 11



Project Benefits to Capitola residents

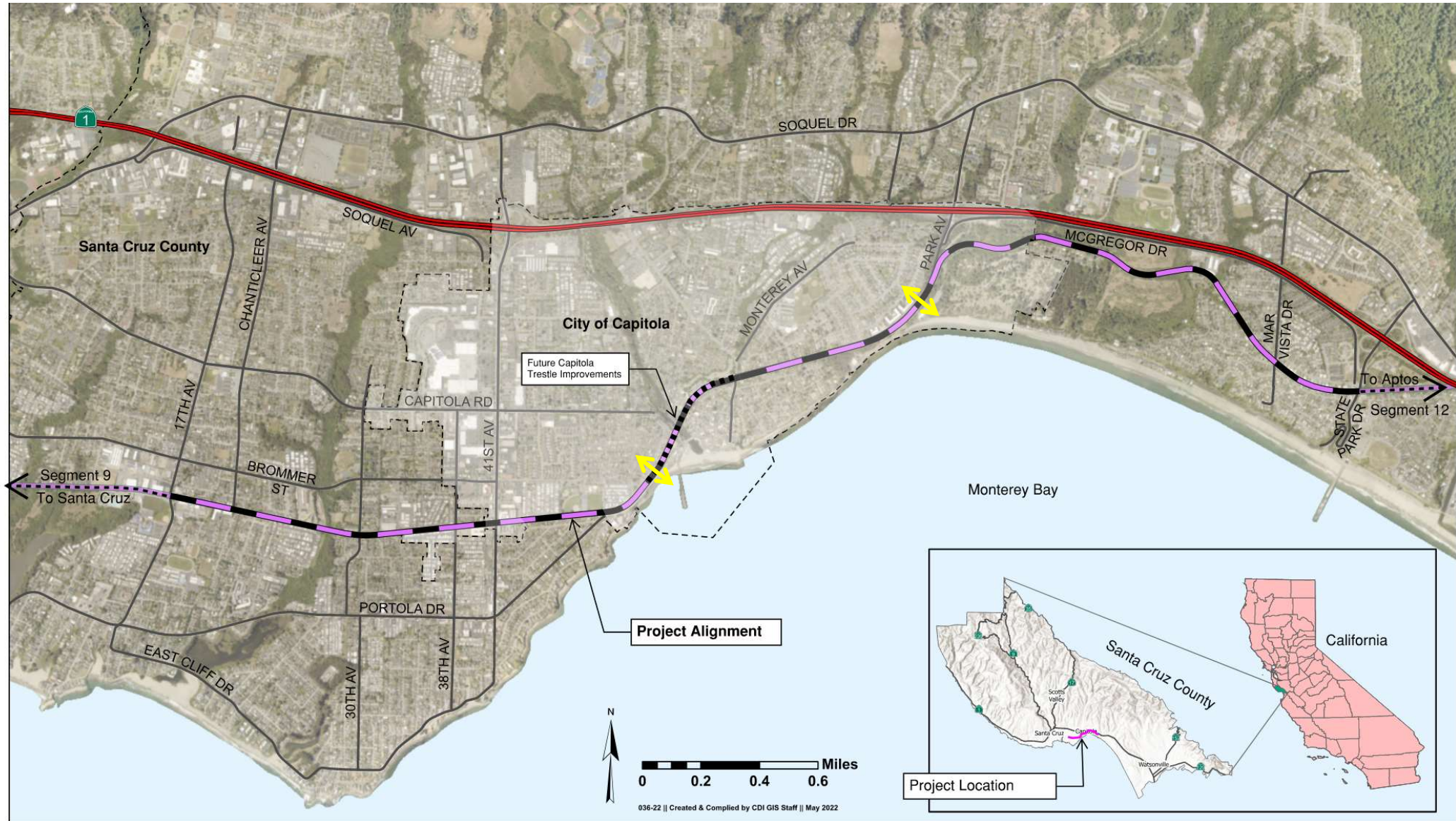
- 2 miles of new dedicated bicycle and pedestrian facility within the City of Capitola
- Direct connection to 18 miles of trails by 2029 (Aptos to Davenport)
- Within 1 mile of 100% and ½ mile of 88% of Capitola residents
- New bicycle and pedestrian and car free access from City of Capitola neighborhoods to:
 - Jade Street Park
 - 41st Ave Commercial Corridor
 - New Brighton State Beach
- Sidewalk gap closure on Park Ave, and provides parallel route for sidewalk gaps on Cliff Dr and McGregor Dr
- Enhanced nonvehicular and low-cost coastal access for all ages and abilities
- No construction cost to the City of Capitola

Project Benefits



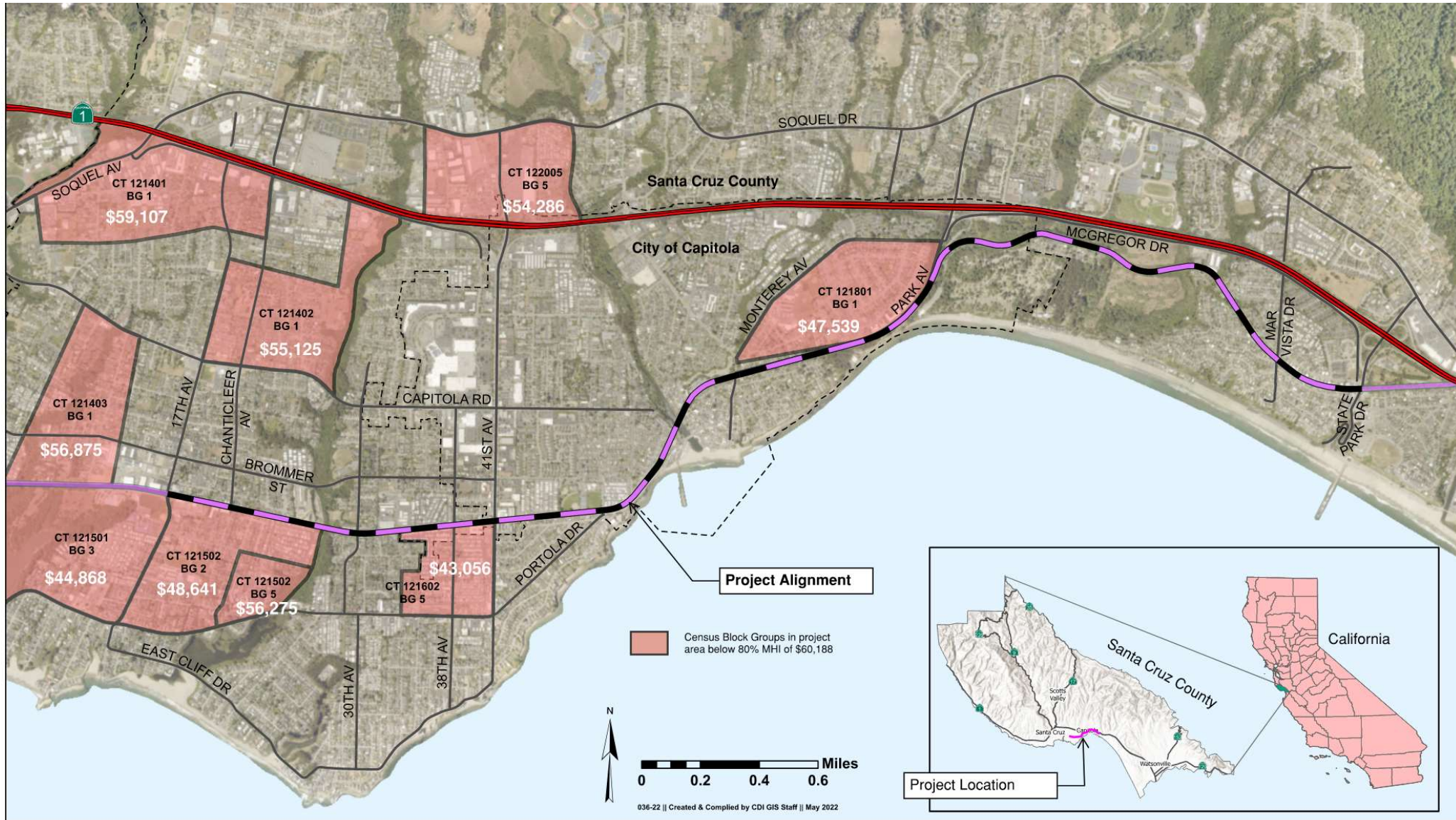
- >26,000 people within ½ mile (10-minute walk) of trail

Project Benefits



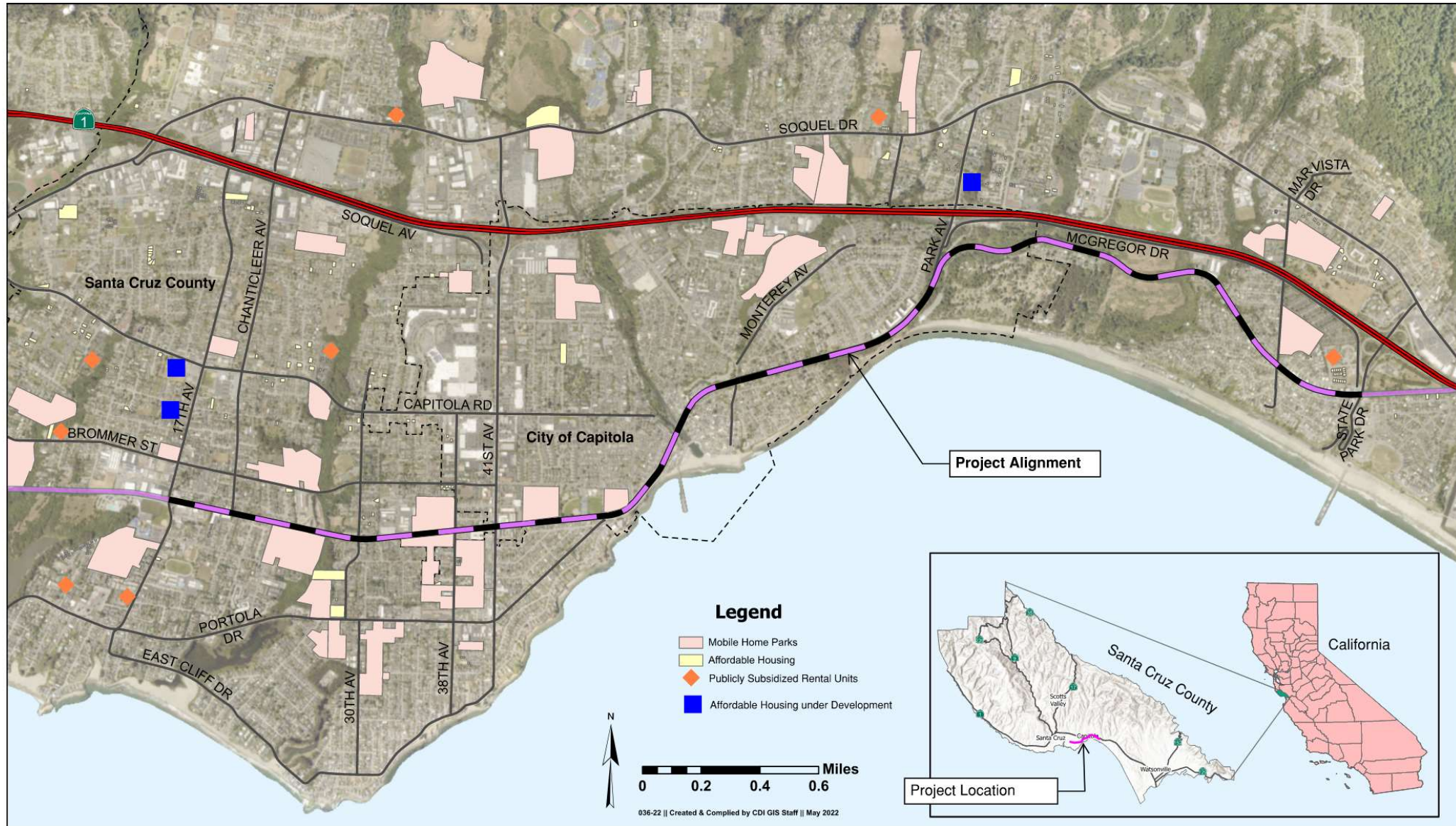
- 4.2 miles of trail – 2 miles traverses entire length of the City

Project Benefits



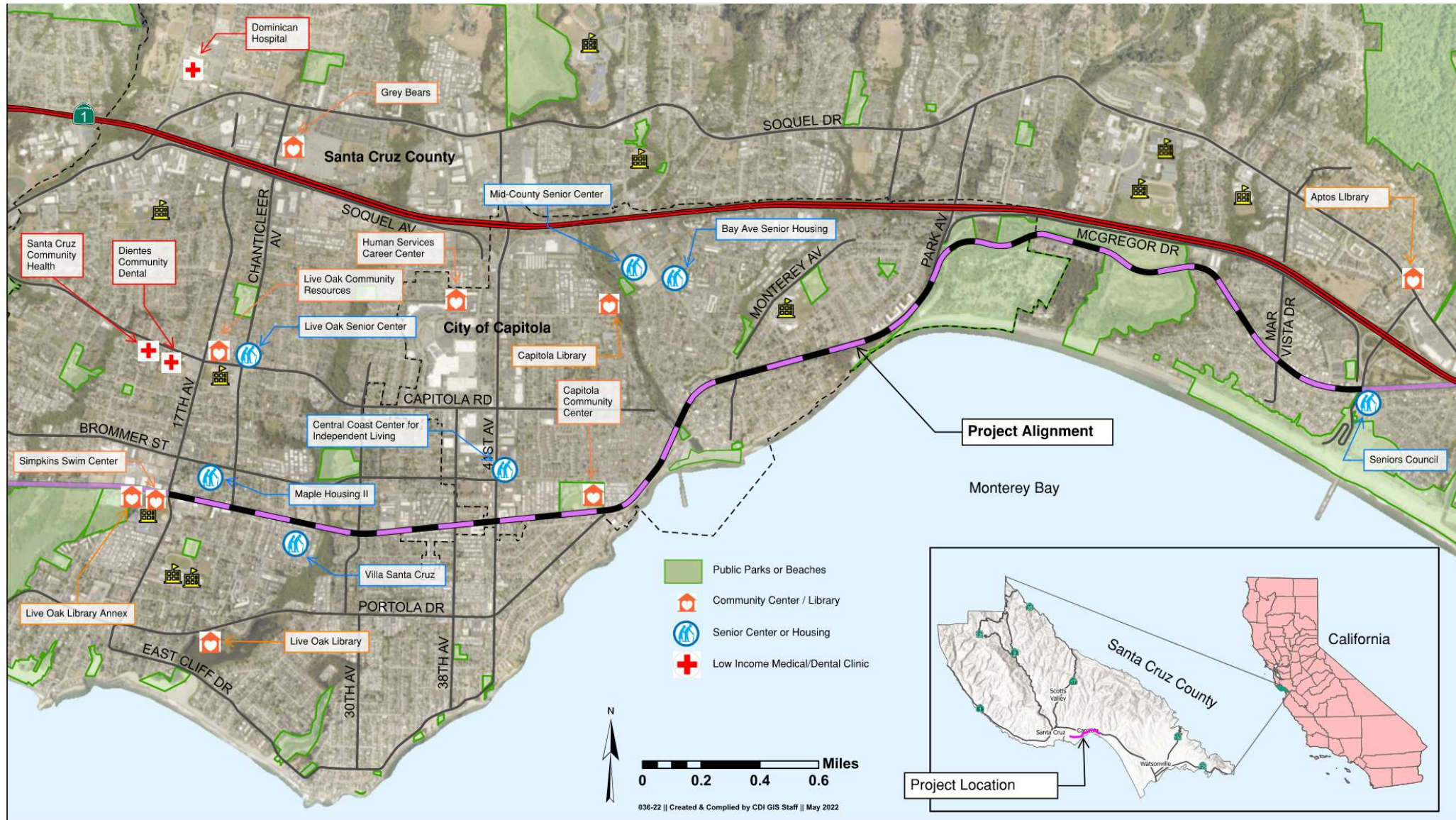
- Connections to low-income areas of City

Project Benefits



- Connections to affordable housing

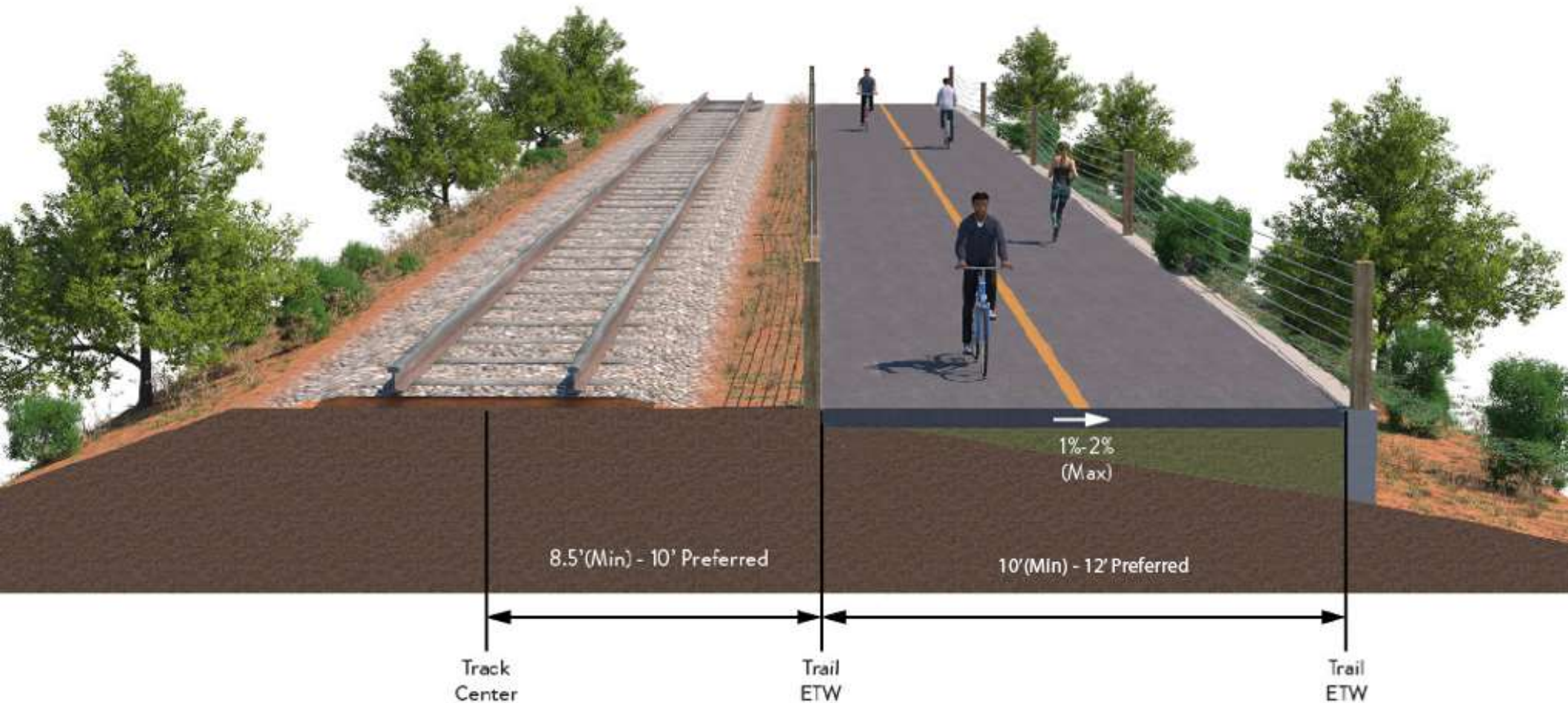
Project Benefits



• Connections to libraries, community centers, seniors, clinics

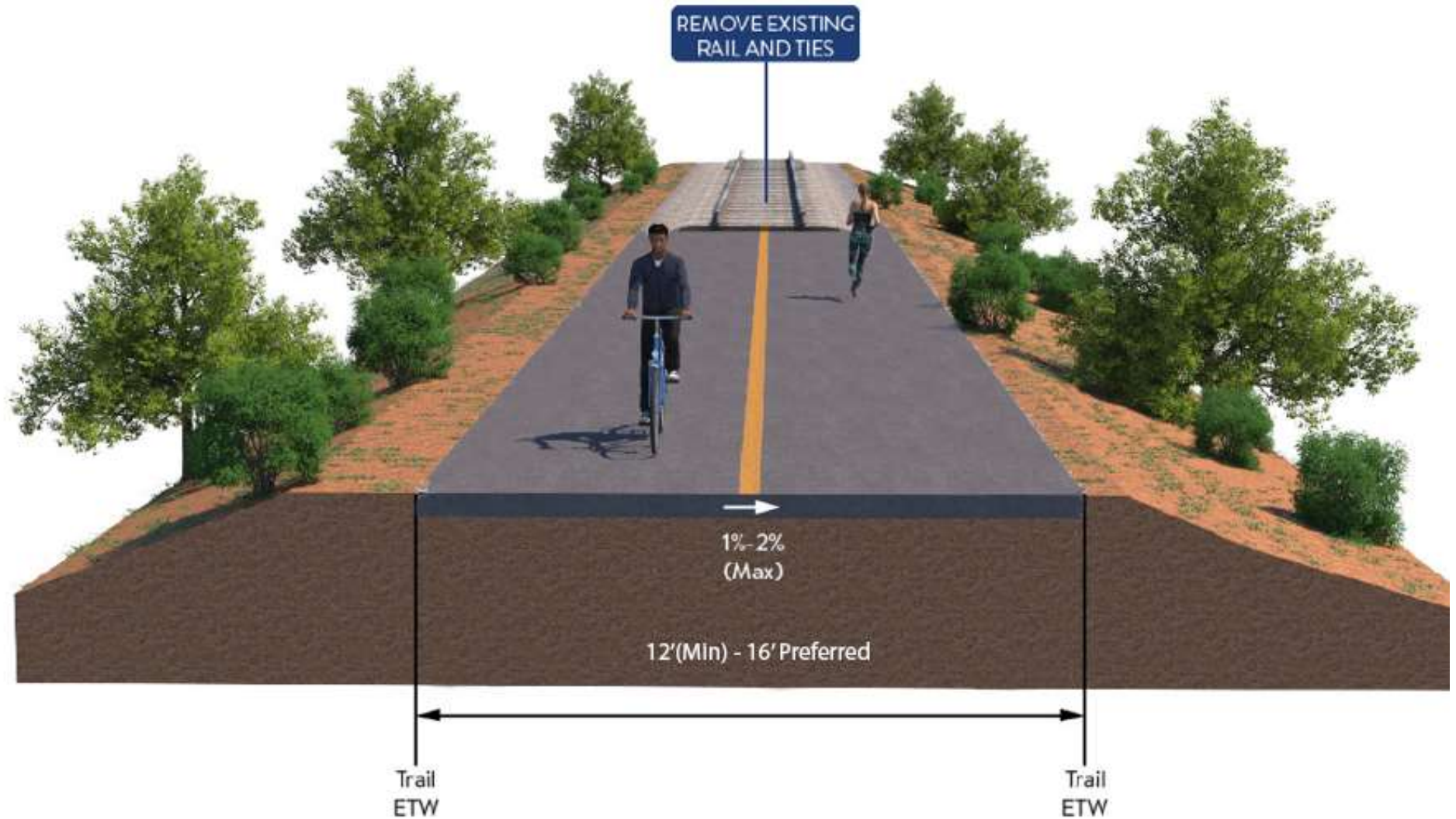
Ultimate Trail Configuration

Trail Next to the Rail Line

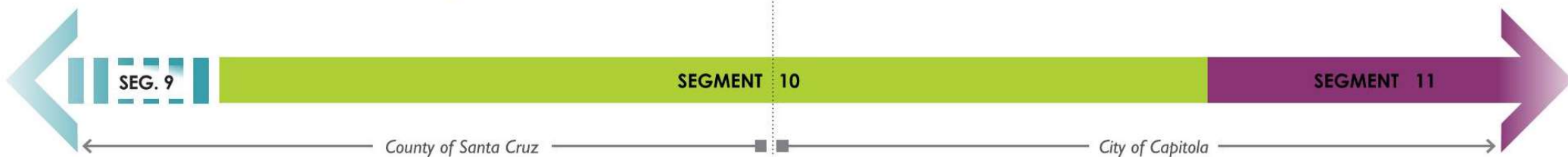
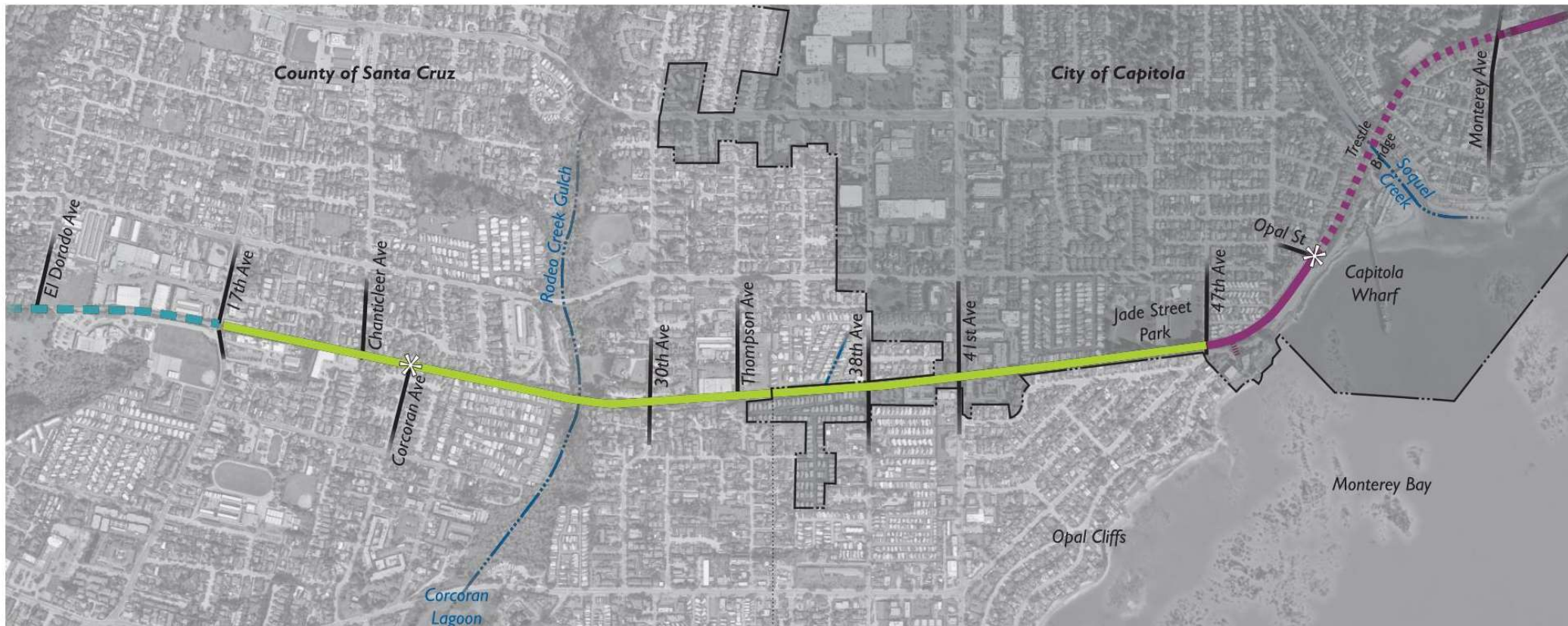


Interim Trail Configuration

Trail On the Rail Line



Coastal Rail Trail – Segments 10 & 11



41st Ave Area



Existing



Proposed

Jade Street Park Area



Existing



Proposed

Cliff Drive Area



Existing



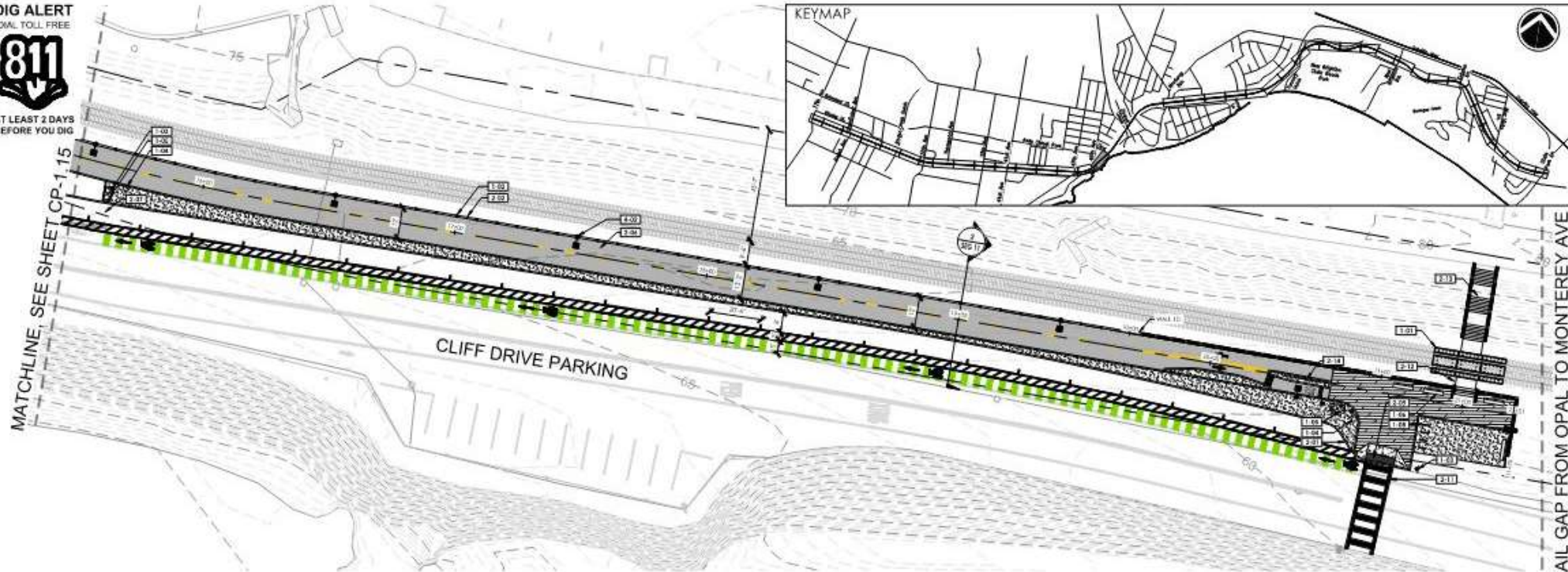
Proposed

Cliff Drive Area

DIG ALERT
DIAL TOLL FREE



AT LEAST 2 DAYS
BEFORE YOU DIG

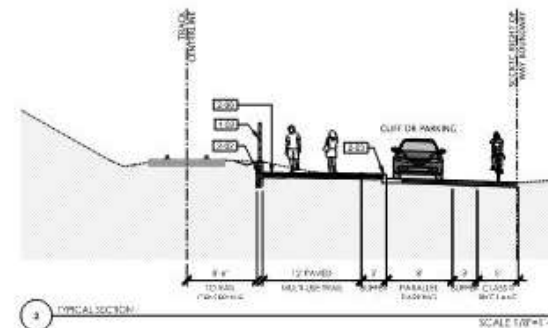


REFERENCE NOTES SCHEDULE

SYMBOL	DESCRIPTION
SITE FURNISHINGS AND EQUIPMENT	
1-01	CONCRETE TRACK PANEL
1-02	SEPARATION FENCING
1-03	PROPOSED SIGN
1-04	RELOCATED PAY STATION
1-05	TRASH RECEPTACLES
1-06	BENCH
1-07	CROSSWALK BARRIER
1-08	BIKE RACKS
1-09	FLEXIBLE BOLLARD
1-10	GUARDRAIL SYSTEM
PEDESTRIAN AND TRAFFIC CONTROL	
2-01	4" WIDE CURB
2-02	8" WIDE CURB
2-03	4" CURB AND GUTTER
2-04	CURB RAMP
2-05	DETECTABLE WARNING SURFACE
2-06	HMA PAVEMENT (TRAIL)
2-07	HMA PAVEMENT (ROAD)
2-08	CONCRETE SIDEWALK
2-09	CONCRETE CROSSWALK STRIPING
2-10	CROSSWALK MARKINGS
2-11	LADDER CROSSWALK STRIPING
2-12	PROPOSED AT-GRADE CROSSING
2-13	PROPOSED STAIRS
2-14	TRAIL CHICANE
STRUCTURAL	
3-01	RETAINING WALL, SEE WP SHEETS
3-02	VIADUCT
3-03	ABUTMENT
3-04	BRIDGE
UTILITIES	
4-01	PP EXISTING RAIL EQUIPMENT
4-02	PROPOSED LIGHT
4-03	NEW LIGHT FIXTURE ON EXISTING POLE
4-05	SIGNALLED W11-15 CROSSING SIGN

LEGEND

SYMBOL	DESCRIPTION
---	SECURIC RIGHT OF WAY
---	CITY LIMITS
---	EXISTING FENCE
---	FENCE OR GUARDRAIL ON CURB, WALL, VIADUCT OR BRIDGE
---	RETAINING WALL, SEE WP SHEETS
---	PROPOSED LIGHTS
---	CONCRETE PAVEMENT
---	HMA PAVEMENT (TRAIL)
---	VIADUCT WITH FIBERGLASS REINFORCED POLYMER DECK
---	BRIDGE WITH FIBERGLASS REINFORCED POLYMER DECK
---	DECOMPOSED GRANITE
---	DECORATIVE PAVERS



Capitola Village Area



Proposed Improvements

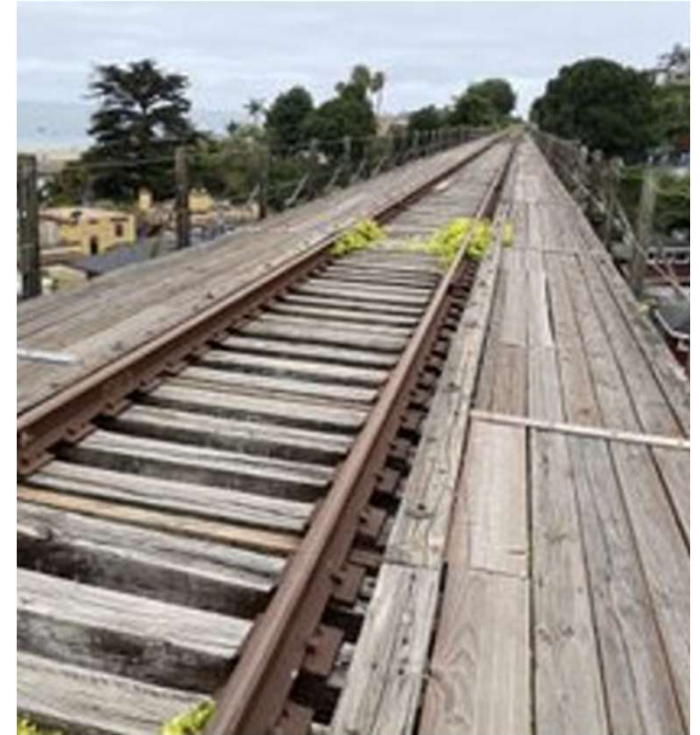
Additional Bicycle and Pedestrian Facilities in Capitola Village

- Seek funding to develop an Active Transportation Plan for Capitola Village
- Identify locations for new bicycle and pedestrian facilities in Capitola Village
- Include Capitola Village priority bicycle and pedestrian improvements in future requests for state and federal funding



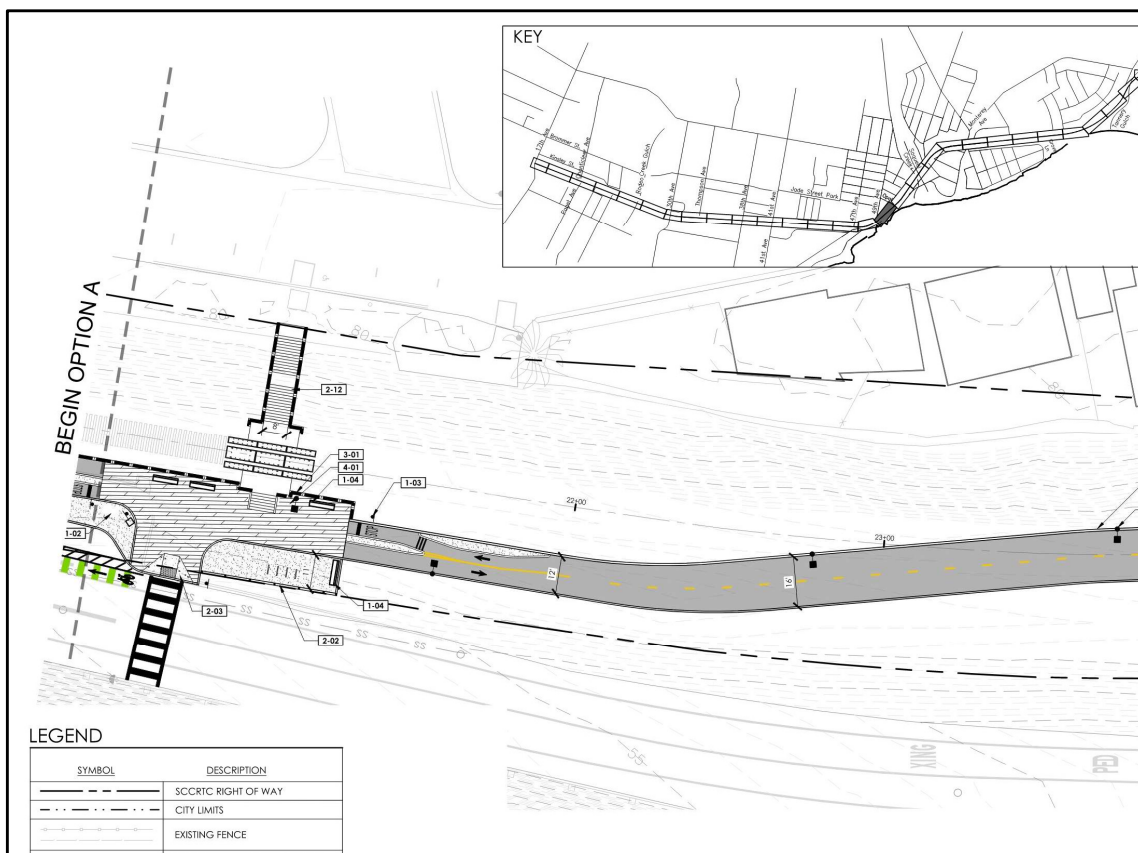
Capitola Trestle FAQs

- Existing Structure cannot accommodate rail and trail
- Insufficient right-of-way to construct a separate trail bridge
- Replace existing trestle with a combined rail and bike/ped bridge over Soquel Creek as part of the RTC's Rail Project
- Convert Capitola Trestle to bicycle and pedestrian bridge requires regulatory approvals (railbanking)



Capitola Trestle Trail Conversion

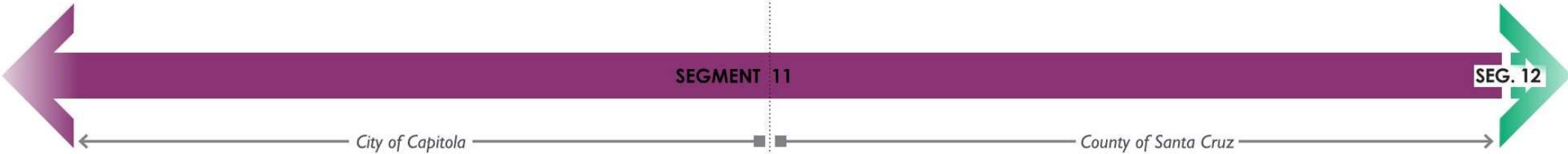
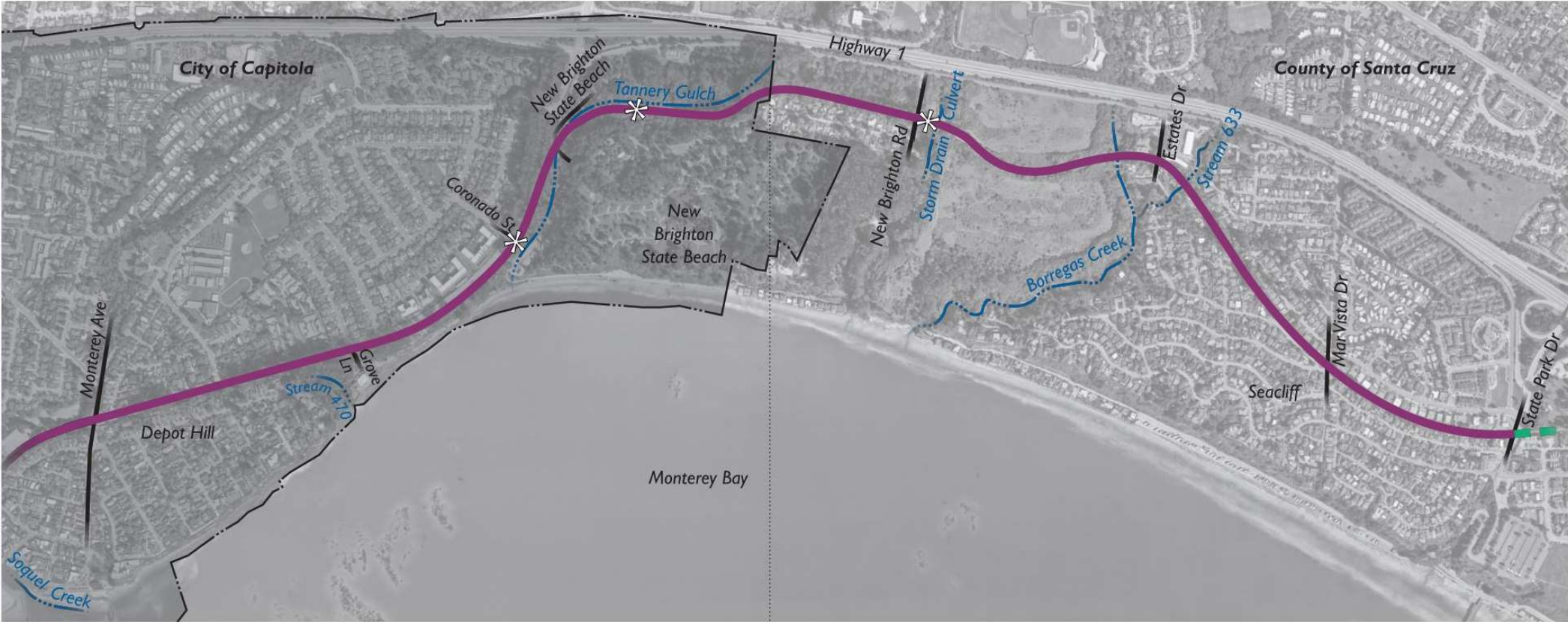
- Not part of ATP grant scope or funding
- Interim Trail Configuration – included
- Ultimate Trail Configuration – now included as Design Option A



Design Option A

Interim & Design Option A

Coastal Rail Trail – Segments 10 & 11



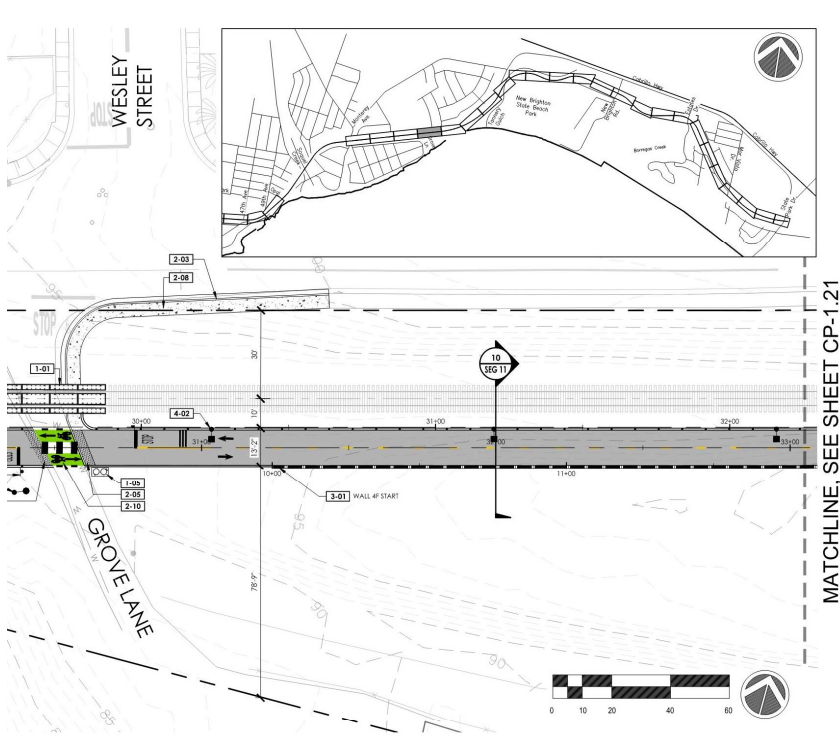
Monterey Ave to Grove Lane



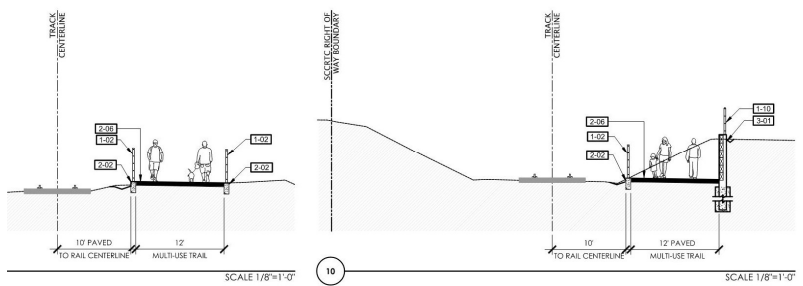
Depot Hill retaining wall and storm



Grove Lane to Coronado Western Connection @ Grove

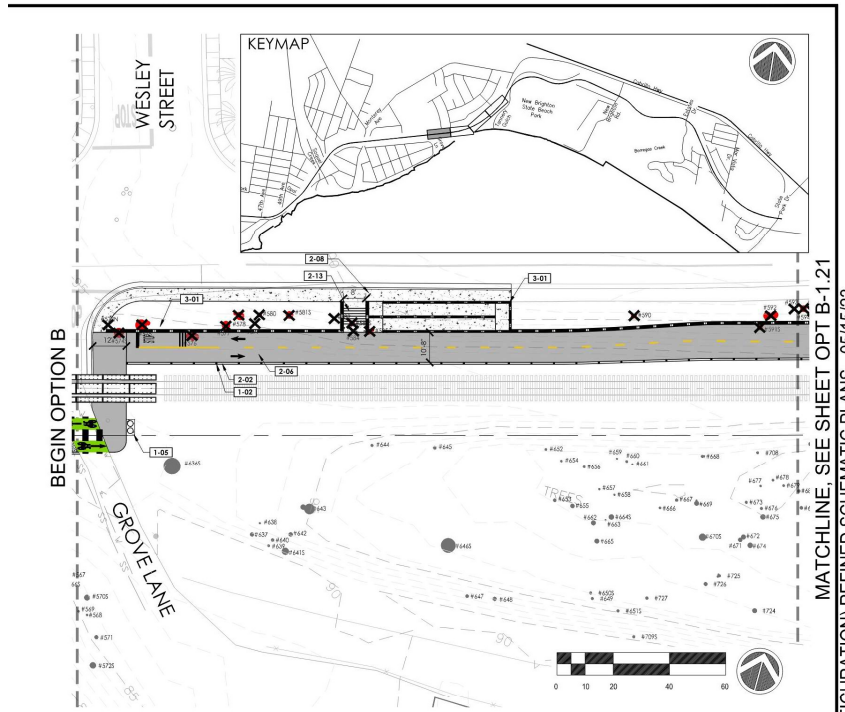


MATCHLINE: SEE SHEET CP-1.21



RAIL TRAIL SEGMENTS 10 & 11
NEXT TO THE RAIL LINE (ULTIMATE TRAIL CONFIGURATION)
CONSTRUCTION KEYNOTE PLANS

REFERENCES FIELD BOOK:	DATE 02/10/2023	SCALE AS SHOWN
DRAWING #: CP-0193-06-RWT-S11	DRAWN KS	CP-1.20
CHECKED MS	DESIGN KS/MS	VAULT NO.



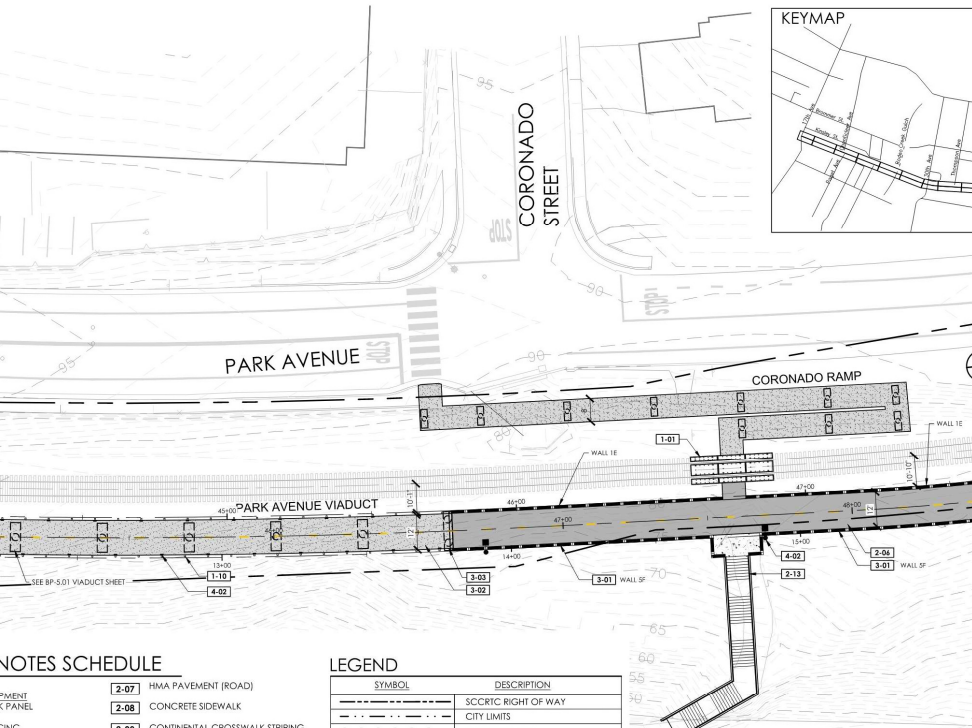
MATCHLINE: SEE SHEET OPT B-1.21

RAIL TRAIL SEGMENTS 10 & 11
RAIL NEXT TO THE RAIL LINE (ULTIMATE TRAIL CONFIGURATION)
DESIGN OPTION B

REFERENCES FIELD BOOK:	DATE 05/15/2023	SCALE AS SHOWN
DRAWING #: CORONADO CP	DRAWN KS	OPT B-1.01
CHECKED MS	DESIGN KS/MS	VAULT NO.

TRAIL NEXT TO THE RAIL LINE (ULTIMATE TRAIL CONFIGURATION) REFINED SCHEMATIC PLANS - 05/15/23

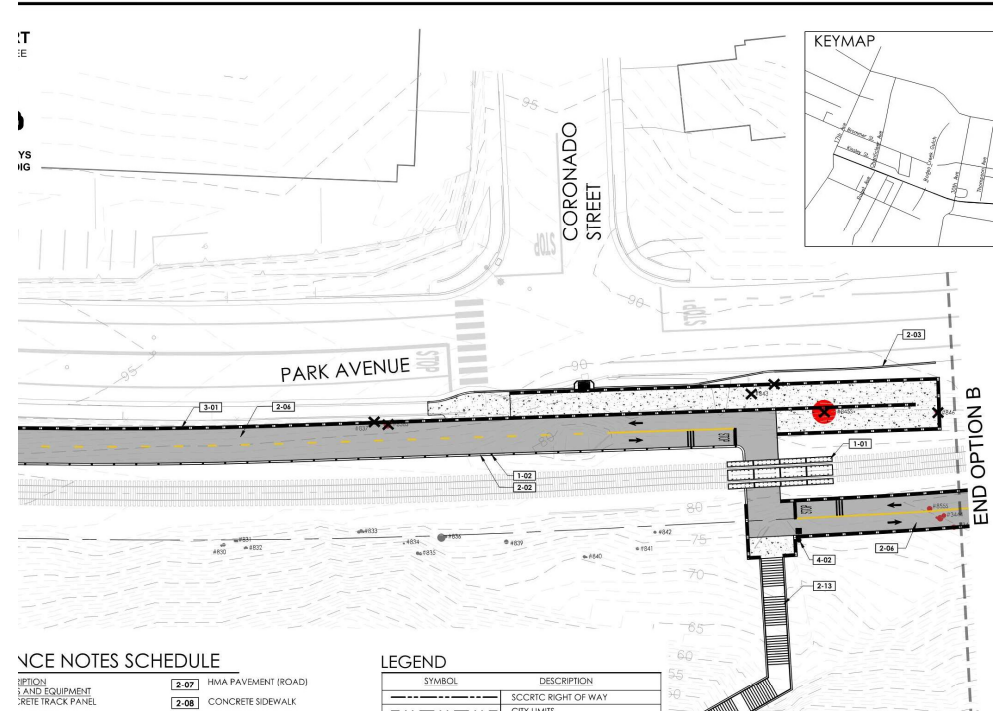
Grove Lane to Coronado Eastern Connection @ Coronado



- NOTES SCHEDULE**
- 2-07 HMA PAVEMENT (ROAD)
 - 2-08 CONCRETE SIDEWALK
 - 2-09 CONTINENTAL CROSSWALK STRIPING
 - 2-10 CROSSBIKE MARKINGS
 - 2-11 LADDER CROSSWALK STRIPING
 - 2-12 PROPOSED AT-GRADE CROSSING
 - 2-13 PROPOSED STAIRS
 - 2-14 TRAIL CHICANE
- STRUCTURAL**
- 3-01 RETAINING WALL, SEE WP SHEETS
 - 3-02 VIADUCT
 - 3-03 ABUTMENT
 - 3-04 BRIDGE
- UTILITIES**
- 4-01 PIP EXISTING RAIL EQUIPMENT
 - 4-02 PROPOSED LIGHT
 - 4-03 NEW LIGHT FIXTURE ON EXISTING POLE
 - 4-05 SOLAR LED W11-15 CROSSING SIGN

LEGEND

SYMBOL	DESCRIPTION
---	SCCRTC RIGHT OF WAY
---	CITY LIMITS
---	EXISTING FENCE
---	FENCE OR GUARDRAIL ON CURB, WALL, VIADUCT OR BRIDGE
---	RETAINING WALL, SEE WP SHEETS
●	PROPOSED LIGHTS
■	CONCRETE PAVEMENT
■	HMA PAVEMENT (TRAIL)
■	VIADUCT WITH FIBERGLASS REINFORCED POLYMER DECK
■	BRIDGE WITH FIBERGLASS REINFORCED POLYMER DECK
■	DECOMPOSED GRANITE
■	DECORATIVE PAVERS



- NOTES SCHEDULE**
- 2-07 HMA PAVEMENT (ROAD)
 - 2-08 CONCRETE SIDEWALK
 - 2-09 CONTINENTAL CROSSWALK STRIPING
 - 2-10 CROSSBIKE MARKINGS
 - 2-11 LADDER CROSSWALK STRIPING
 - 2-12 PROPOSED AT-GRADE CROSSING
 - 2-13 PROPOSED STAIRS
 - 2-14 TRAIL CHICANE
- STRUCTURAL**
- 3-01 RETAINING WALL, SEE WP SHEETS
 - 3-02 VIADUCT
 - 3-03 ABUTMENT
 - 3-04 BRIDGE
- UTILITIES**
- 4-01 PIP EXISTING RAIL EQUIPMENT
 - 4-02 PROPOSED LIGHT
 - 4-03 NEW LIGHT FIXTURE ON EXISTING POLE
 - 4-05 SOLAR LED W11-15 CROSSING SIGN

LEGEND

SYMBOL	DESCRIPTION
---	SCCRTC RIGHT OF WAY
---	CITY LIMITS
---	EXISTING FENCE
---	FENCE OR GUARDRAIL ON CURB, WALL, VIADUCT OR BRIDGE
---	RETAINING WALL, SEE WP SHEETS
●	PROPOSED LIGHTS
■	CONCRETE PAVEMENT
■	HMA PAVEMENT (TRAIL)
■	VIADUCT WITH FIBERGLASS REINFORCED POLYMER DECK
■	BRIDGE WITH FIBERGLASS REINFORCED POLYMER DECK
■	DECOMPOSED GRANITE
■	DECORATIVE PAVERS

	REVISIONS	<p>COUNTY OF SANTACRUZ DEPARTMENT OF PUBLIC WORKS 701 Ocean Street, Room 410 Santa Cruz, CA 95060</p>	<p>RAIL TRAIL TRAIL NEXT TO THE RAIL</p>

	REVISIONS	<p>COUNTY OF SANTACRUZ DEPARTMENT OF PUBLIC WORKS 701 Ocean Street, Room 410 Santa Cruz, CA 95060</p>	<p>RAIL TRAIL TRAIL NEXT TO THE RAIL</p>

Coastal

Inland – Design Option B

Segment 10 & 11

Key Public Input to Date:

- Environmental Impact Report Scoping Meeting – November 2021
- Neighborhood presentations – Late 2021
- RTC Transportation Policy Workshop – February 2022
- Virtual and In-person Open House Schematic Design Reviews – Spring 2022
- Online project survey – Spring 2022
- RTC Citizen Advisory Committees (Bicycle Committee, Elderly and Disabled Transportation Advisory Committee, Interagency Technical Advisory Committee)- Spring 2022
- Targeted outreach to disadvantaged communities – Spring 2022
- Parks and Recreation Commission – Summer 2022
- Capitola City Council – Spring 2023
- Neighborhood presentations – Spring 2023
- Draft Environmental Impact Report – October 16 – December 15*

**Note: comments made during this presentation are not part of the official record of comments on the DEIR.*

Segment 10 & 11

Project Schedule & Next Steps

- Notice of Preparation of Environmental Impact Report - October 2021
- Draft Schematic Plan Reviews - 2022
- Draft Environmental Impact Report (EIR)– October 2023
- Draft EIR Public Meeting – November 16, 2023
- Certification of Final EIR – March 2024
- Final Design, right-of-way, and permitting – 2024 - 2026
- Construction Start Date - 2026

The Coastal Rail Trail



Thank you!

Contact Information

Rob Tidmore, Segment 10 & 11 Project Manager

Santa Cruz County Parks

831-454-7947, Robert.Tidmore@santacruzcountyca.gov

For more information, please visit: www.santacruzcountyca.gov/RailTrail

Grace Blakeslee, Senior Transportation Planner

Santa Cruz County Regional Transportation Commission

831-460-3219, gblakeslee@sccrtc.org

Comments on the Draft EIR should be emailed/mailed to:

RailTrail@santacruzcountyca.gov

Rob Tidmore, Santa Cruz County Parks, 979 17th Ave, Santa Cruz, CA 95062