

An aerial photograph of a city street intersection. The image shows a multi-lane road with various traffic markings, including 'STOP' and 'ONLY' signs. There are several cars and a few people on bicycles. The street is flanked by trees and buildings. The overall scene is a typical urban intersection with safety improvements being highlighted.

# Bay Avenue and Hill Street Traffic Safety Update

City Council  
February 13, 2025

# Bay Ave/Hill St Traffic Safety Update

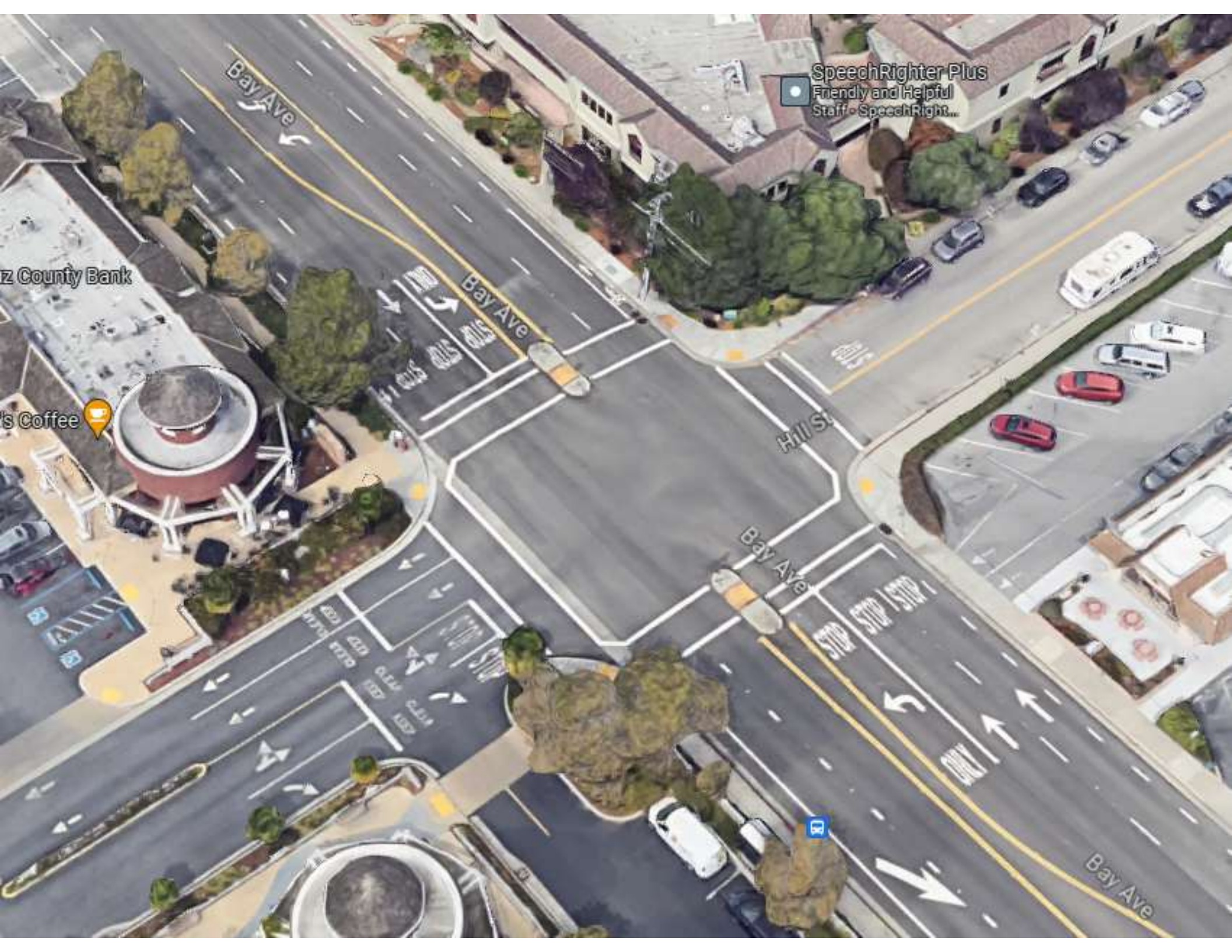
## Recommended Action



Provide direction on short-term modifications to the Bay Avenue and Hill Street intersection.

Implement approved short-term modifications in coordination with the Bay Avenue Corridor Study.





SpeechRighter Plus  
Friendly and Helpful  
Staff - SpeechRighter...

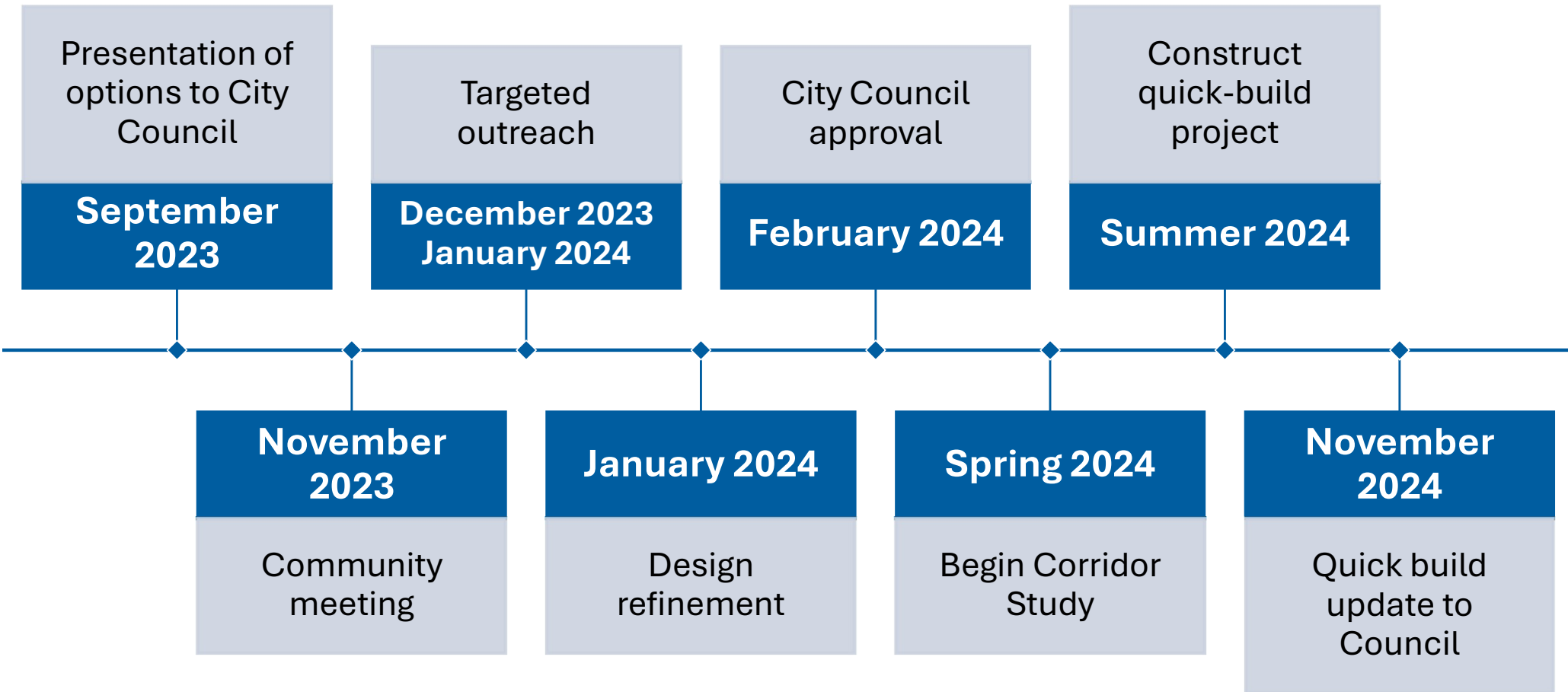
County Bank

's Coffee



Bay Ave

# Bay/Hill Street Traffic Safety Project Timeline



# Bay Ave/Hill St Traffic Safety Update

## 11/21/24 City Council Meeting Recap



**Remove the current intersection configuration in Spring 2025**

**Implement specific modifications**

- Extend striping for a continuous bike lane
- Examine costs for raised crosswalks
- Expand the crosswalk by adjusting the stop sign line
- Determine whether bollards can remain at all intersection corners

**Collect additional data**



# Bay Ave/Hill St Traffic Safety Update

## Traffic Data Summary



### **Before Quick-Build:**

February 15, 2022, &  
March 7, 2024

### **After Quick-Build:**

October 24, 2024, &  
January 25, 2025



### **Bicycle Volumes:**

Increased after the quick-build implementation, particularly in the morning peak



### **Pedestrian Volumes:**

Slight fluctuations, but overall consistent before and after modifications



### **Vehicle Traffic:**

Southbound volumes remained stable, with minor variations across peak times

# Bay Ave/Hill St Traffic Safety Update

## Intersection Level of Service



### January 2025 LOS is similar to October 2024

- Primary factors: northbound and southbound vehicle volumes on Bay Avenue.

### Between October 2024 and January 2025

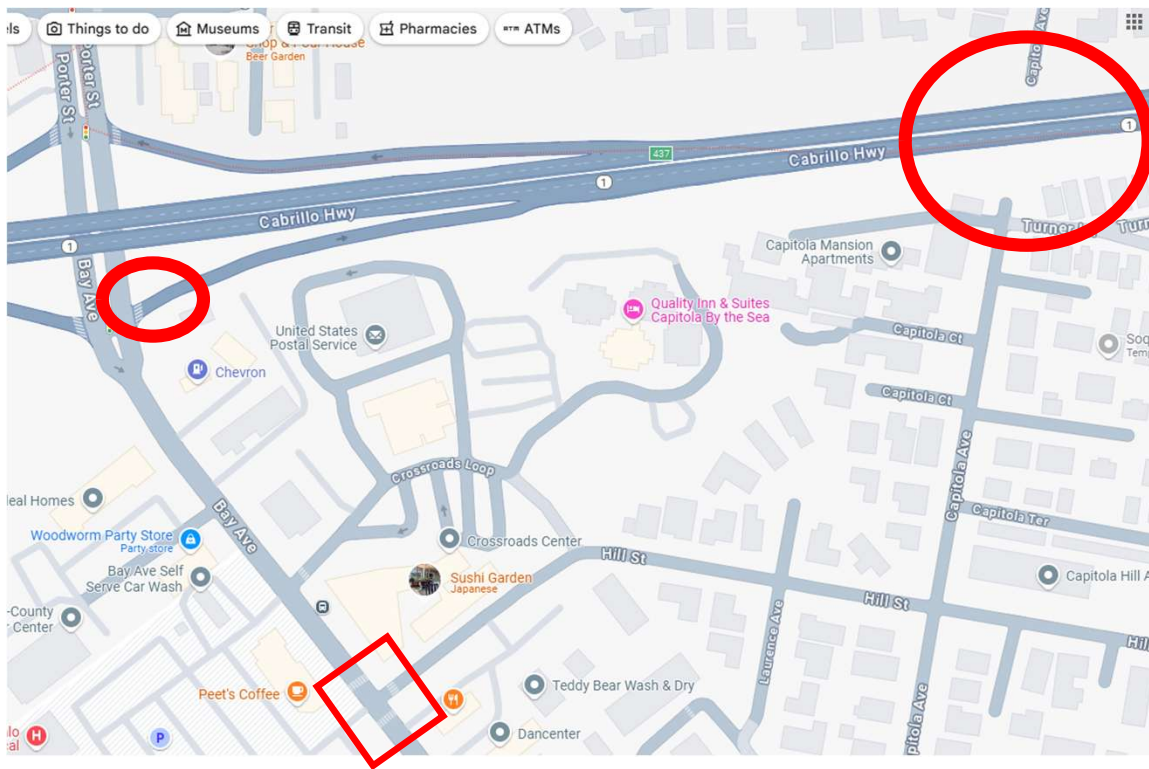
- NB: ~5% increase in AM and mid-day peaks; ~4% decrease in PM peak.
- SB: ~3% decrease in AM and mid-day peaks; unchanged in PM peak.

### Fluctuations are minor

- Do not significantly impact overall LOS

# Bay Ave/Hill St Traffic Safety Update

## Additional Traffic Impacts



### Capitola Avenue Bridge

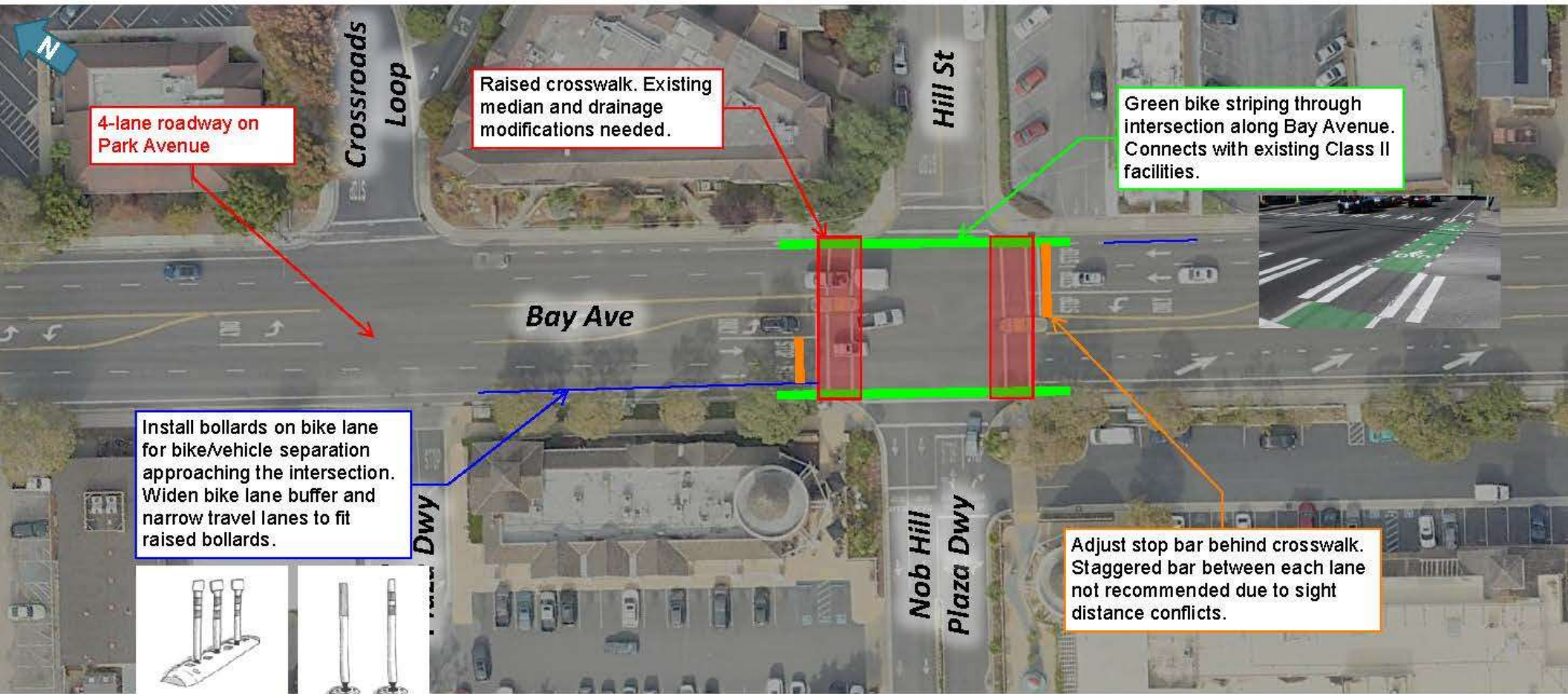
- Closed until Fall 2025

### Bay Avenue Southbound Onramp

- Open week of March 10th, 2025



# 11/21/2024 CC Notes



# Bay Ave/Hill St Traffic Safety Update

## Evaluation of Proposed Modifications



Option	Benefits	Challenges	Estimated Cost
Raised Crosswalks	Safer, ADA access	Cost, drainage, delays	\$6K–\$25K per crosswalk
Additional Green Bike Lanes	Improves bike safety	Cost, driver confusion	\$15–\$30/sq. ft.
Bollards	Enhances visibility	Maintenance, aesthetics	\$50 - \$200 per bollard
Staggered Stop Bars	May help visibility	Minimal impact	\$8–\$20/ft.





## Recommendations

- Provide direction on short-term modifications to the Bay Avenue and Hill Street intersection.
- Implement approved short-term modifications in coordination with the upcoming Bay Avenue Corridor Study.