

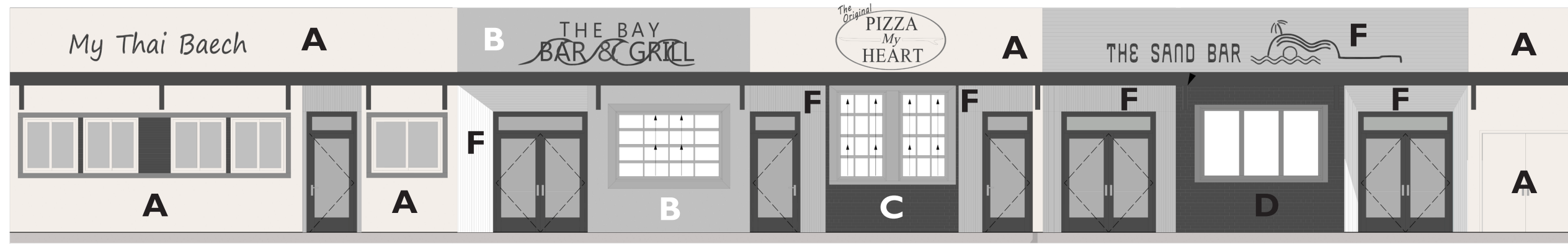
REVISED STREETScape | ESPLANADE ELEVATION



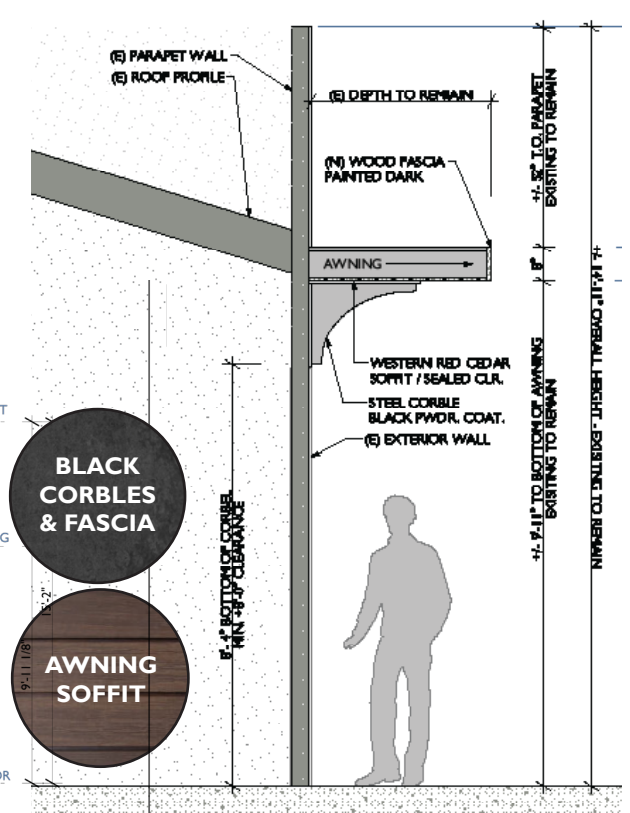
STREET VIEW - ALUMINUM DOORS IN PLACE OF THE WOOD DOORS

PROPOSED ELEVATIONS & SECTION | ESPLANADE

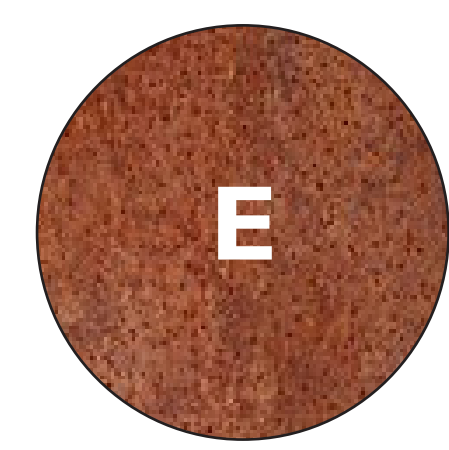
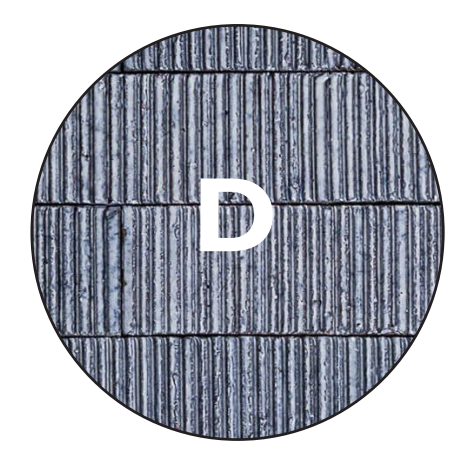
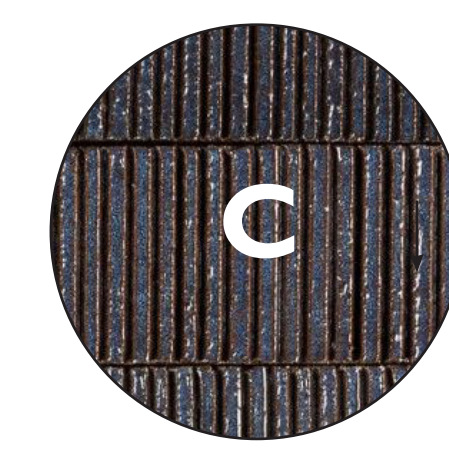
A.



STREET VIEW FROM THE ESPLANADE (SHOWN WITH SIGNAGE)



AWNING & CORBEL SECTION VIEW



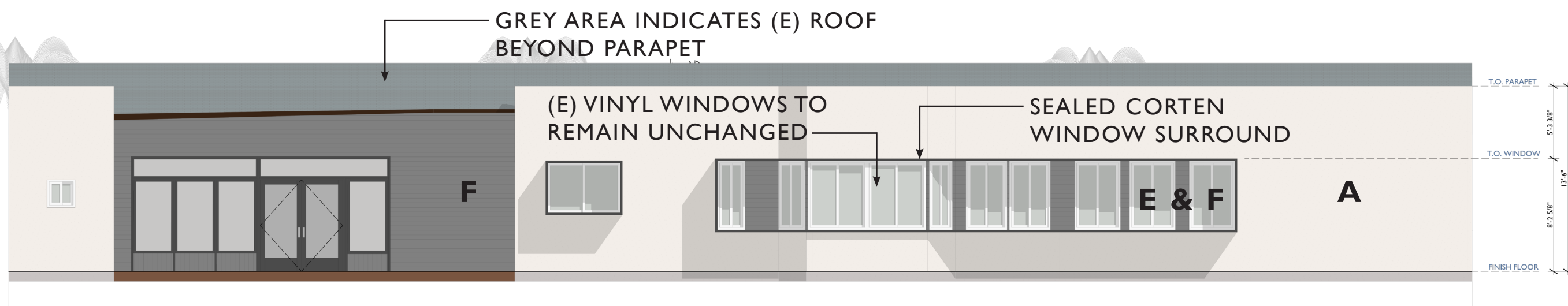
INTEGRAL COLOR STUCCO/ SMOOTH FINISH / WARM OFFWHITE / MODELED GREEN

RIBBED TILE ACCENT

CORETEN PRE-SEALED FINISH

DARK WESTERN RED CEDAR

B.



REAR VIEW FROM THE LAGOON



CT-7571-T Clear coating for Corten and bare carbon steel

Benefits

- Eliminate staining of surrounding areas from unsightly runoff and stains. Rusty drips on other substrates can ruin the look of a building.
- Eliminate transfer of rust to people (hands & clothing).
- Extend the life of the steel by protecting from further corrosion.
- Enhances the natural beauty and depth of the original finished.
- Good adhesion on naturally or artificially rusted surfaces.
- Self-annealing and will blend to itself to create complete protection.
- Available in a Standard 90 sheen or a Satin finish.
- Fully revisable or removable
- Provides good levels of protection from bleaches, acids and bird droppings
- Easily and fully maintainable
- Provides long lasting protection



Product description

CT-7571-T Corten Sealer is a crystal clear one-part air cured coating. It is a self-levelling easy to apply product, leaving a seamless surface.

It has excellent chemical, abrasion and impact resistance above rating H4 on the scratch resistance pencil scale using the ASTM method D3363-05.

CT-7471-T contains Anti-oxidants that will halt and seal continuation of the rusting process

CT-7471-T provides protection from, bleaches, acids, bird droppings and acid rain.

ST-7571-TA Contains silver ion anti-microbial technology making it resistant to bacterial growth

The coating is extremely thin measuring only 7 to 12 microns making it virtually invisible to the naked eye.

The coating will remain flexible enabling it to move with the constant expansion and contraction of the substrate when heating and cooling. It has passed the ASTM method test D2794 for flexibility and impact at 80lbs and passed the ½" mandrel bend test.

CT-7571-T is applied directly in a one-part coating and is usually touch dry within 20 minutes in ambient temperatures.

Dry film thickness is usually 7 to 12 microns

The Technical Data Sheet (TDS) is recommended to be read in conjunction with the Safety Data Sheet (SDS) and the Application Guide (AG) for this product.

CT-7571-T is only available from BROMOCO International Ltd. UK

Finishes

CT-7571 Can be supplied standard 90 Sheen or satin finishes.



ASTM Method Test result

TEST	Method	Units	Result	Rating
<u>Impact Resistance</u>	D2794	1/2"	Mandrel bend test	Passed
	Flexibility	Passed	Direct & Reverse	Passed
	Impact	80 lb	No peeling, No lifting	Passed
<u>Film Pencil test</u>	D3363-05	Gouge	3H	Excellent
		Cut	4H	Excellent
<u>Salt Fog Test</u>	B117	1000 hrs		Passed
<u>Humidity Resistance</u>	D1794	1000 hrs @ 38°C		Rated 10
<u>Weather Exposure</u>	D552	100 hrs cyclic	No checking	Passed
		at 120 min light	No crazing	Passed
		18 min diminished	No adhesion loss	Passed
<u>Real Time</u>	External	Corten Steel Structures UK		
			6 Year exposure	Passed
			Fading	No effect
			Chalking	No effect
			Peeling	No effect
			Water damage	No effect
<u>Chemical Resistance</u>	D1308	Procedure 5.2	15 minute spot test	
			with 10% muriatic	Passed
			Discolouration	No effect
			Blistering	No effect
		Acid with 10%	sodium Hydroxide	Passed
		24 hour immersion		Passed
			2% soap solution	Passed
			3 types	Passed
		24 hour recovery	period	
			Adhesion	No effect
			Finish	No effect



Application Methods

The product can be applied by Brush, Lint free cloth, HVLP Spray with standard jet, High density foam roller / block or dipped.

Roller: To avoid air bubbles, it is very important to soak the roller then squeeze out excess then roll on a cardboard sheet to test.

Conditions during application: The temperature of the substrate should be minimum 10 °C and at least 3 °C above the dew point of the air, measured near the substrate. Good ventilation is usually required in confined areas to ensure proper drying. There should be no moisture content on the surface. The coating should not be exposed to oil, chemicals or mechanical stress until fully cured. This product should not be applied on to the surfaces that contain soft plastics (Lettering or signage).

To secure lasting adhesion to the subsequent product all surfaces should be brushed down to remove all large loose particles prior to application

The information in this document is given to the best of BROMOCO International's knowledge, based on laboratory testing and practical experience. BROMOCO International's products are considered as semi-finished goods and as such, products are often used under conditions beyond BROMOCO International's control. BROMOCO International cannot guarantee anything but the quality of the product itself. Minor product variations may be implemented in order to comply with local requirements. Jotun reserves the right to change the given data without further notice. Users should always consult the BROMOCO International's technical department for specific guidance on the general suitability of this product for their needs and specific application practices. If there is any inconsistency between different language issues of this document, the English (United Kingdom) version will prevail.



Corten Steel sheet before



After XL-08 Process



Coating Applied WET