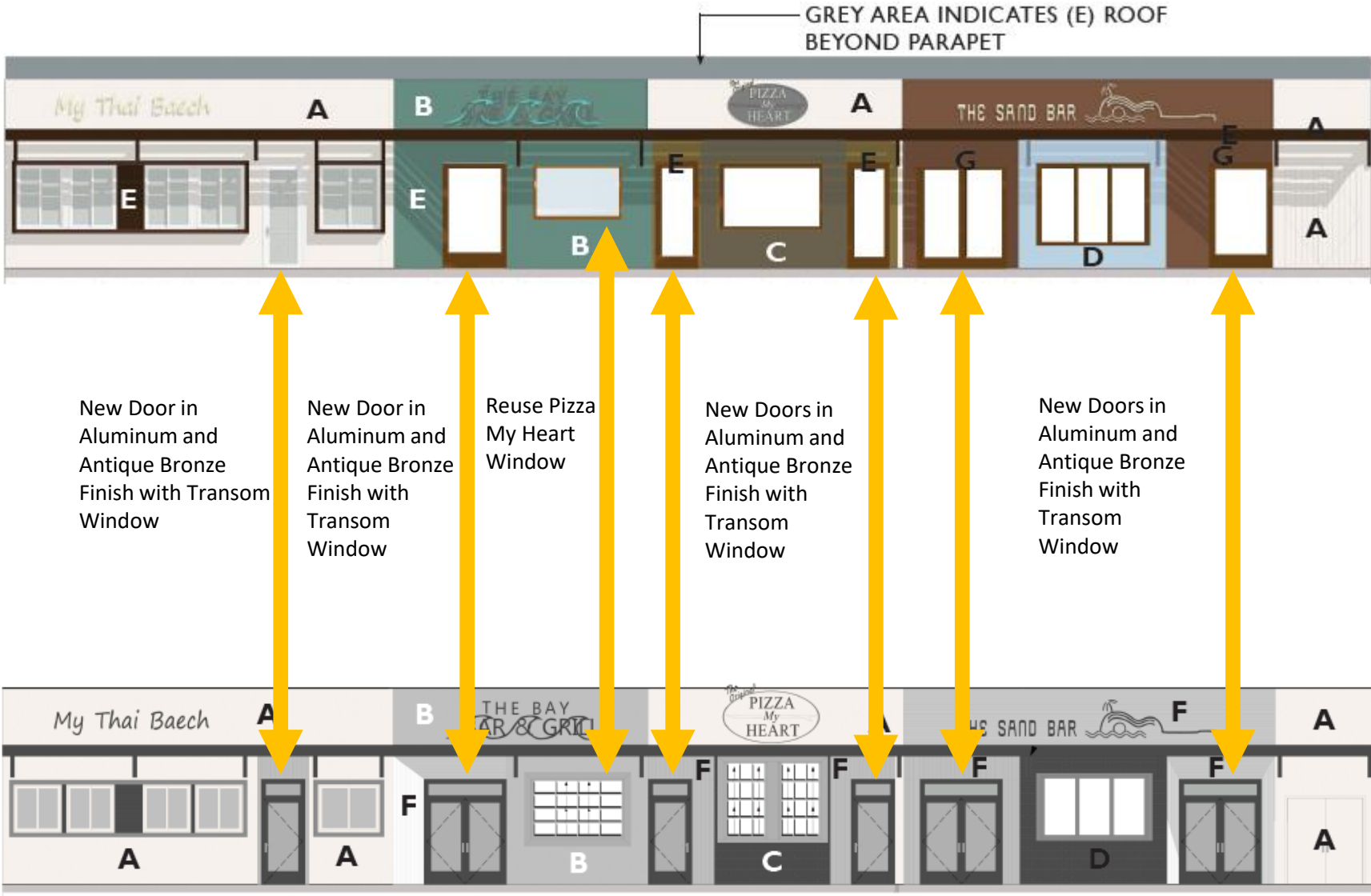
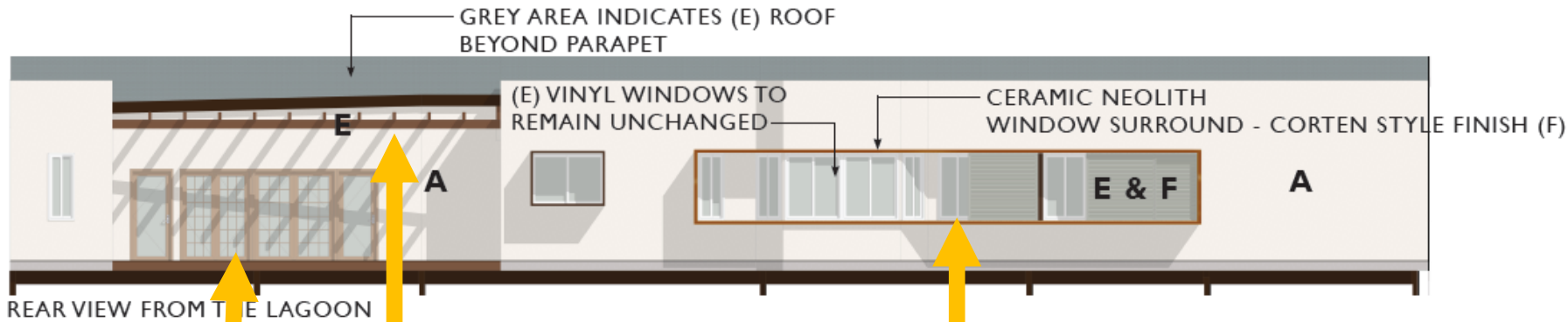


# Front Elevation Approved and Proposed



# Rear Elevation Approved and Proposed

B.



 FUSE ARCHITECTS + BUILDERS

512 CAPITOLA AVE. | CAPITOLA, CA.  
831.479.9295

REVISED - PRELIMINARY EXTERIOR  
SCHEMATIC CONCEPT  
ESPLANADE STREET SCAPE

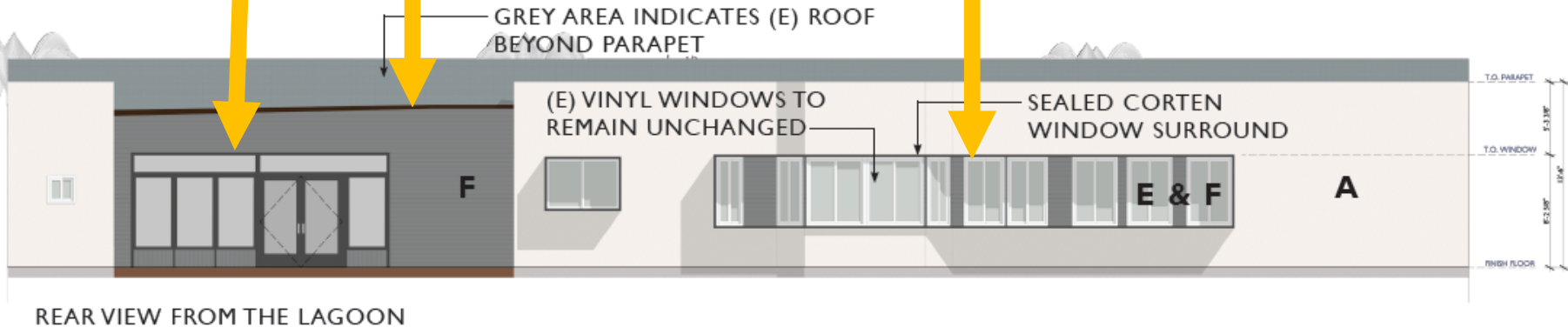
DATE | 03.31.2023

New Door and Window System in Aluminum and Antique Bronze Finish

Applicant proposing to make Cedar Awning optional

Ceramic Neolith to Corten at window portal/frame

B.



 FUSE ARCHITECTS + BUILDERS

512 CAPITOLA AVE. | CAPITOLA, CA.  
831.479.9295

REVISED - PRELIMINARY EXTERIOR  
SCHEMATIC CONCEPT

DATE | 05.23.2023

## Bay Bar Approved and Proposed Renderings



Approved green painted wood (left), proposed wood stain (right)