

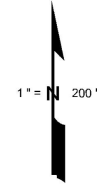
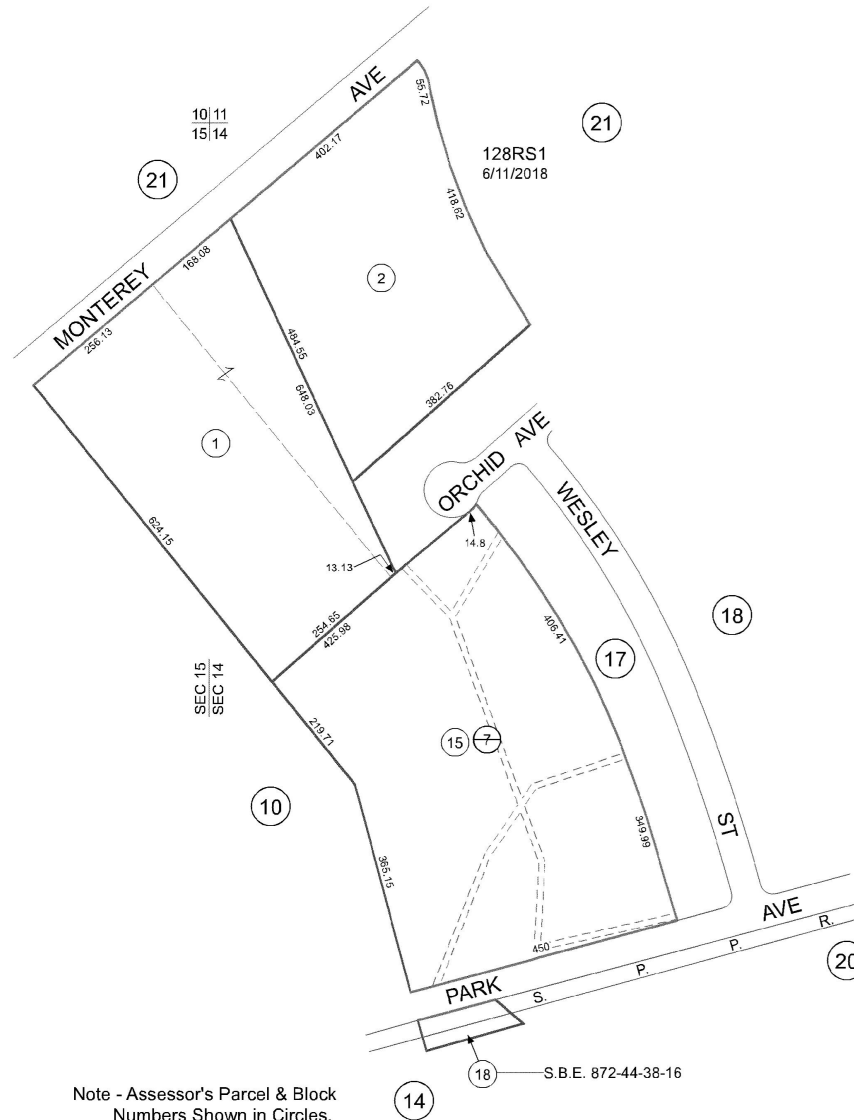
FOR TAX PURPOSES ONLY

THE ASSESSOR MAKES NO GUARANTEE AS TO MAP ACCURACY NOR ASSUMES ANY LIABILITY FOR OTHER USES. NOT TO BE REPRODUCED. ALL RIGHTS RESERVED.
© COPYRIGHT SANTA CRUZ COUNTY ASSESSOR 1997

CITY OF CAPITOLA

Tax Area Code
3-106

36-15



Electronically drawn 1/7/97 CB
Rev 1/14/98 CB (CA Consolidation)
Rev 4/23/01 mm (changed paper size)
Rev 8/20/18 CB (assessments)
Rev 8/20/18 CB (128RS1)

Note - Assessor's Parcel & Block
Numbers Shown in Circles.

Assessor's Map No. 36-15
City of Capitola
County of Santa Cruz, Calif.