

DIG ALERT
DIAL TOLL FREE



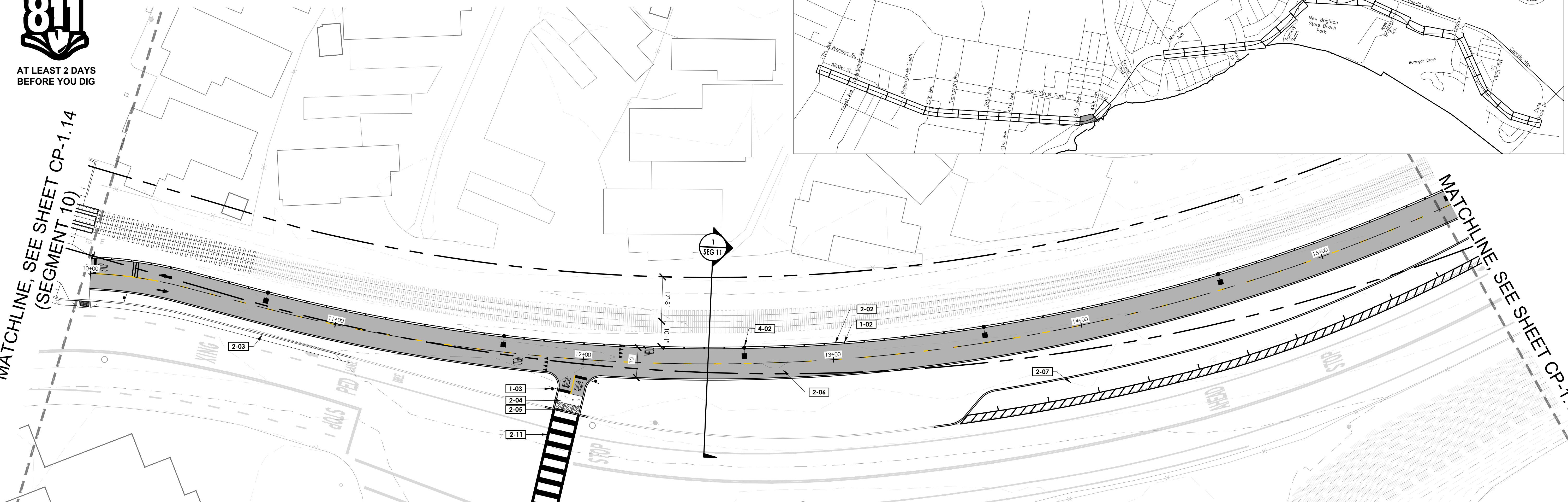
AT LEAST 2 DAYS
BEFORE YOU DIG

KEYMAP



MATCHLINE, SEE SHEET CP-1.14
(SEGMENT 10)

MATCHLINE, SEE SHEET CP-1.16

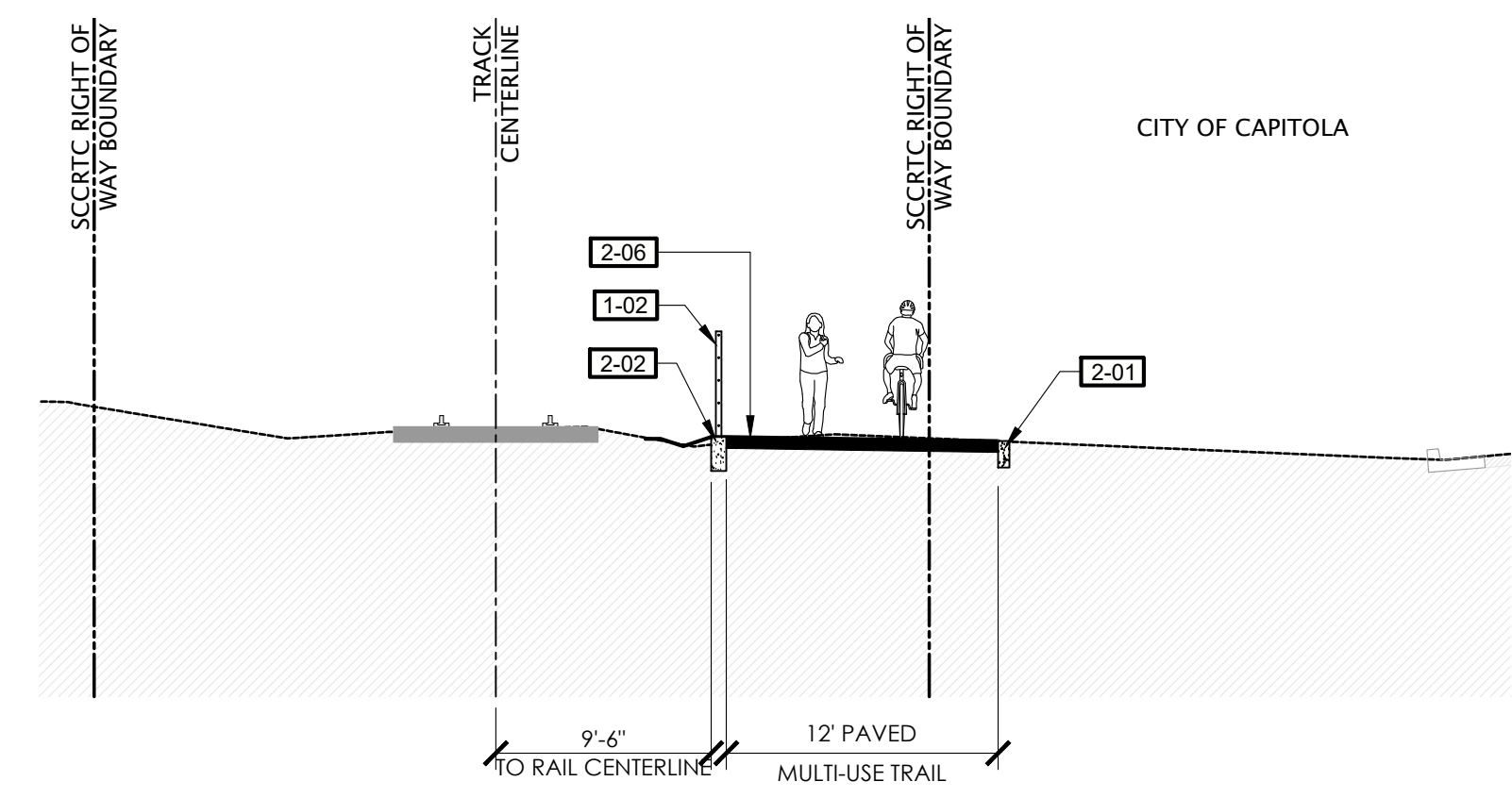
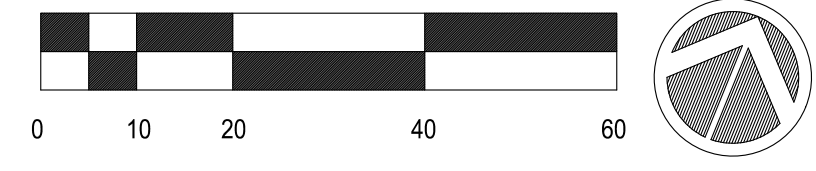


REFERENCE NOTES SCHEDULE

SYMBOL	DESCRIPTION	SYMBOL	DESCRIPTION
1-01	CONCRETE TRACK PANEL	2-07	HMA PAVEMENT (ROAD)
1-02	SEPARATION FENCING	2-08	CONCRETE SIDEWALK
1-03	PROPOSED SIGN	2-09	CONTINENTAL CROSSWALK STRIPING
1-04	RELOCATED PAY STATION	2-10	CROSSBIKE MARKINGS
1-05	TRASH RECEPTACLES	2-11	LADDER CROSSWALK STRIPING
1-06	BENCH	2-12	PROPOSED AT-GRADE CROSSING
1-07	CROSSWALK BARRIER	2-13	PROPOSED STAIRS
1-08	BIKE RACKS	2-14	TRAIL CHICANE
1-09	FLEXIBLE BOLLARD	STRUCTURAL	
1-10	GUARDRAIL SYSTEM	3-01	RETAINING WALL, SEE WP SHEETS
PEDESTRIAN AND TRAFFIC CONTROL		3-02	VIADUCT
2-01	6" WIDE CURB	3-03	ABUTMENT
2-02	8" WIDE CURB	3-04	BRIDGE
2-03	6" CURB AND GUTTER	UTILITIES	
2-04	CURB RAMP	4-01	PIP EXISTING RAIL EQUIPMENT
2-05	DETECTABLE WARNING SURFACE	4-02	PROPOSED LIGHT
2-06	HMA PAVEMENT (TRAIL)	4-03	NEW LIGHT FIXTURE ON EXISTING POLE
		4-05	SOLAR LED W1 1-15 CROSSING SIGN

LEGEND

SYMBOL	DESCRIPTION
---	SCCRTC RIGHT OF WAY
- - - - -	CITY LIMITS
---	EXISTING FENCE
---	FENCE OR GUARDRAIL ON CURB, WALL, VIADUCT OR BRIDGE
---	RETAINING WALL, SEE WP SHEETS
● ● ● ● ●	PROPOSED LIGHTS
---	CONCRETE PAVEMENT
---	HMA PAVEMENT (TRAIL)
---	VIADUCT WITH FIBERGLASS REINFORCED POLYMER DECK
---	BRIDGE WITH FIBERGLASS REINFORCED POLYMER DECK
---	DECOMPOSED GRANITE
---	DECORATIVE PAVERS



1 TYPICAL SECTION
SCALE 1/8"=1'-0"

PRELIMINARY
NOT FOR CONSTRUCTION

NO.	DATE	DESCRIPTION

COUNTY OF
SANTACRUZ
DEPARTMENT OF PUBLIC WORKS
701 Ocean Street, Room 410
Santa Cruz, CA 95060

RAIL TRAIL SEGMENTS 10 & 11
TRAIL NEXT TO THE RAIL LINE (ULTIMATE TRAIL CONFIGURATION)
CONSTRUCTION KEYNOTE PLANS

REFERENCES
FIELD BOOK:
DRAWING #:
CP-0193-06-RWT-S11

DATE 02/10/2023
DRAWN KS
DESIGN KS/MS
CHECKED MS

SCALE AS SHOWN
CP-1.15
VAULT NO.

TRAIL NEXT TO THE RAIL LINE (ULTIMATE TRAIL CONFIGURATION) REFINED SCHEMATIC PLANS - 02/10/23

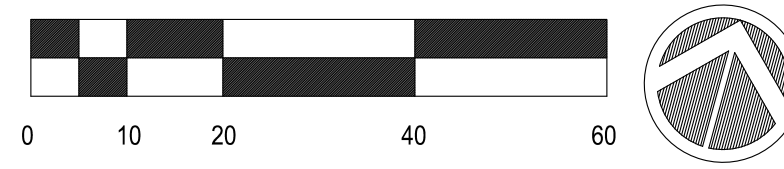
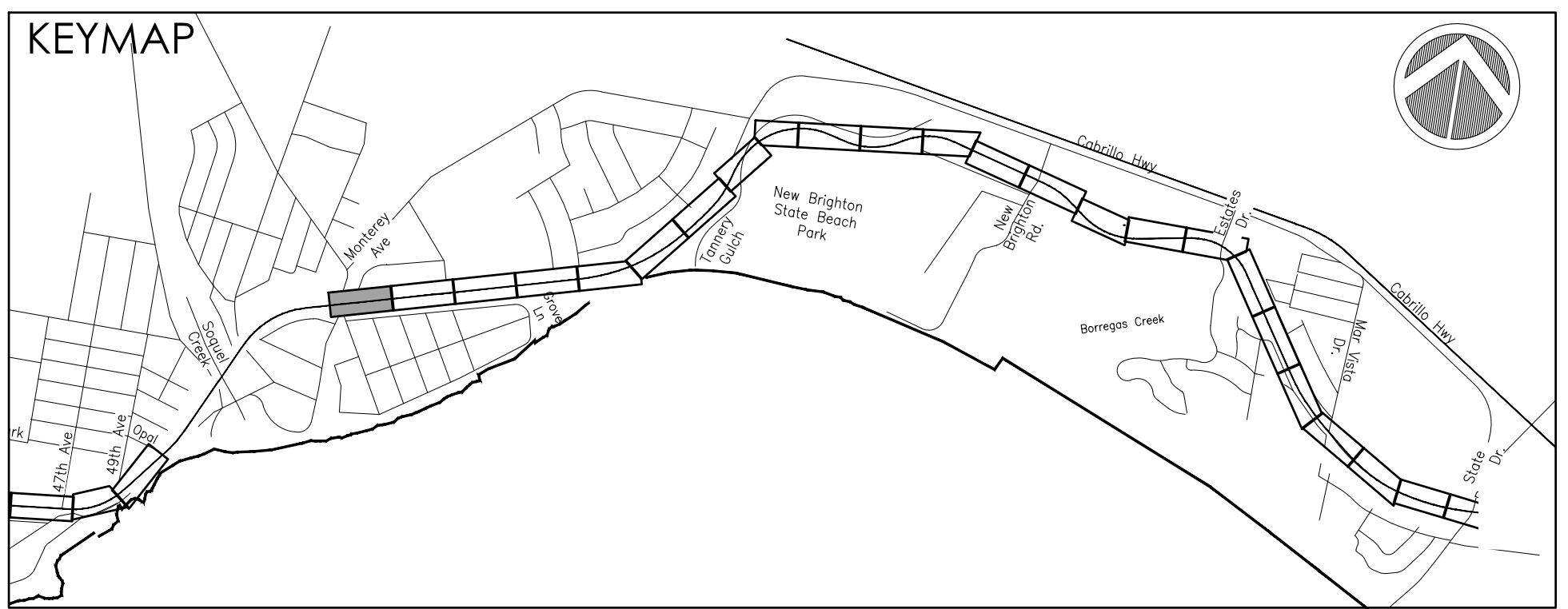
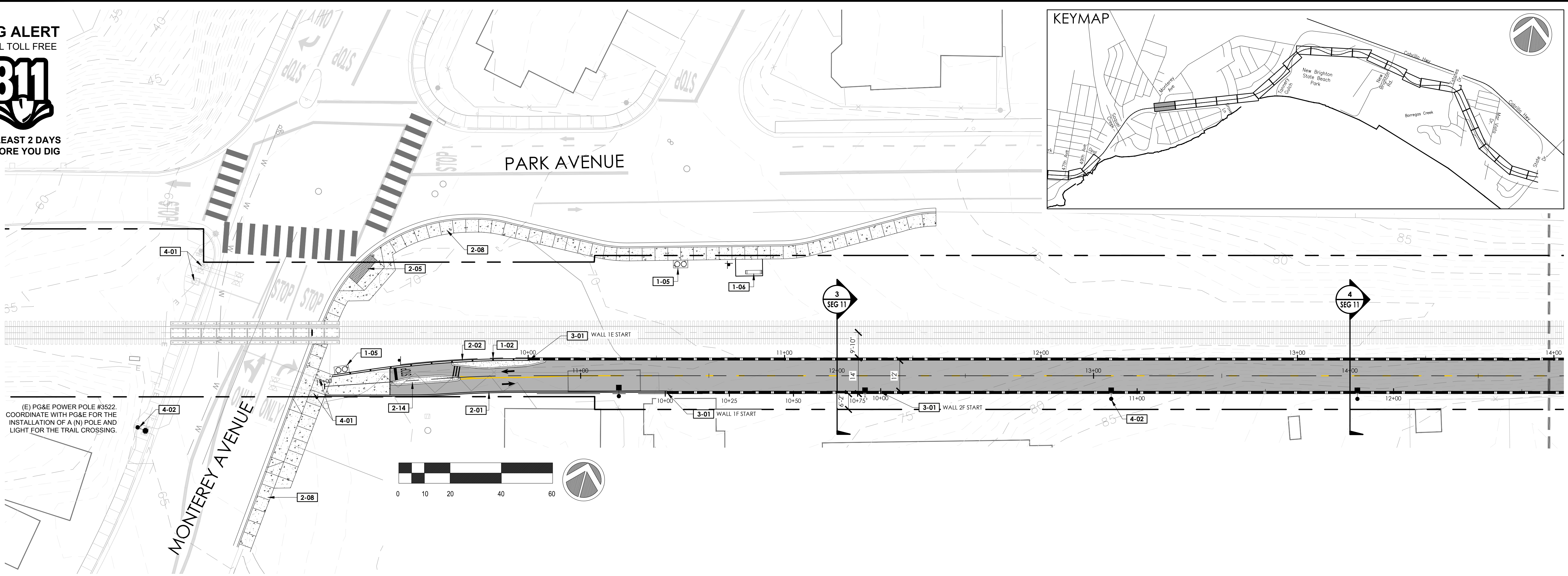
DIG ALERT
DIAL TOLL FREE



AT LEAST 2 DAYS
BEFORE YOU DIG

TRAIL GAP FROM OPAL TO MONTEREY AVE SEE
SHEET 1.16 WHERE TRAIL PICKS UP AT OPAL

(E) PG&E POWER POLE #3522.
COORDINATE WITH PG&E FOR THE
INSTALLATION OF A (N) POLE AND
LIGHT FOR THE TRAIL CROSSING.

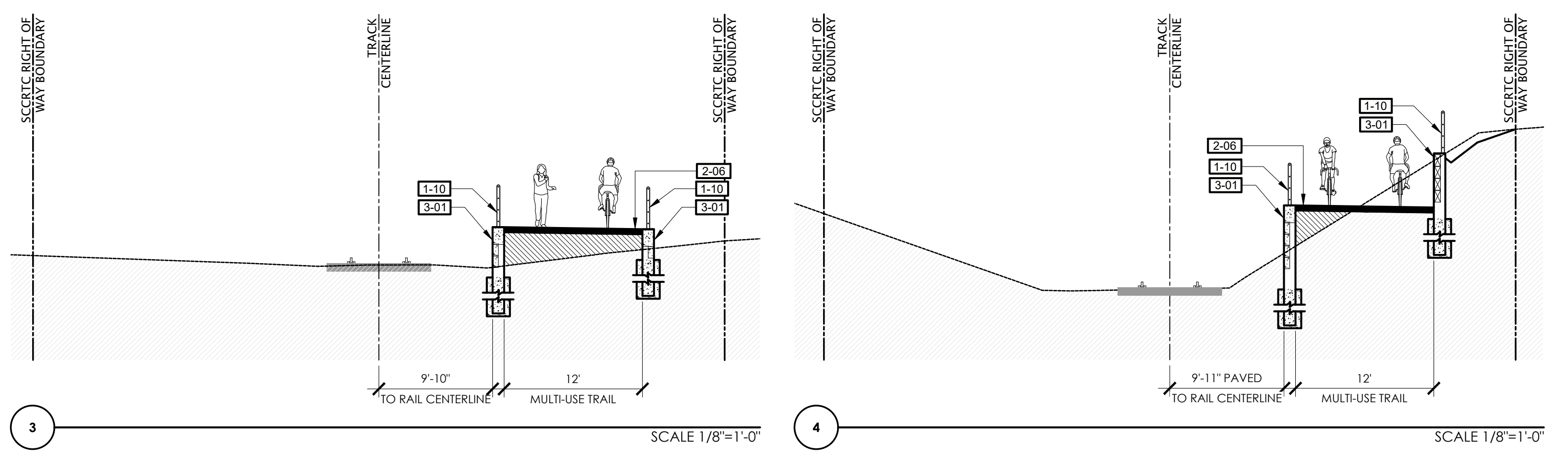


REFERENCE NOTES SCHEDULE

SYMBOL	DESCRIPTION	SYMBOL	DESCRIPTION
1-01	CONCRETE TRACK PANEL	2-07	HMA PAVEMENT (ROAD)
1-02	SEPARATION FENCING	2-08	CONCRETE SIDEWALK
1-03	PROPOSED SIGN	2-09	CONTINENTAL CROSSWALK STRIPING
1-04	RELOCATED PAY STATION	2-10	CROSSBIKE MARKINGS
1-05	TRASH RECEPTACLES	2-11	LADDER CROSSWALK STRIPING
1-06	BENCH	2-12	PROPOSED AT-GRADE CROSSING
1-07	CROSSWALK BARRIER	2-13	PROPOSED STAIRS
1-08	BIKE RACKS	2-14	TRAIL CHICANE
1-09	FLEXIBLE BOLLARD	STRUCTURAL	
1-10	GUARDRAIL SYSTEM	3-01	RETAINING WALL, SEE WP SHEETS
PEDESTRIAN AND TRAFFIC CONTROL		3-02	VIADUCT
2-01	6" WIDE CURB	3-03	ABUTMENT
2-02	8" WIDE CURB	3-04	BRIDGE
2-03	6" CURB AND GUTTER	UTILITIES	
2-04	CURB RAMP	4-01	PIP EXISTING RAIL EQUIPMENT
2-05	DETECTABLE WARNING SURFACE	4-02	PROPOSED LIGHT
2-06	HMA PAVEMENT (TRAIL)	4-03	NEW LIGHT FIXTURE ON EXISTING POLE
		4-05	SOLAR LED W1 1-15 CROSSING SIGN

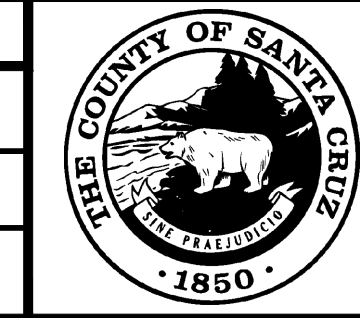
LEGEND

SYMBOL	DESCRIPTION
---	SCRTC RIGHT OF WAY
- - -	CITY LIMITS
---	EXISTING FENCE
---	FENCE OR GUARDRAIL ON CURB, WALL, VIADUCT OR BRIDGE
---	RETAINING WALL, SEE WP SHEETS
●	PROPOSED LIGHTS
---	CONCRETE PAVEMENT
---	HMA PAVEMENT (TRAIL)
---	VIADUCT WITH FIBERGLASS REINFORCED POLYMER DECK
---	BRIDGE WITH FIBERGLASS REINFORCED POLYMER DECK
---	DECOMPOSED GRANITE
---	DECORATIVE PAVERS



REVISIONS

NO.	DATE	DESCRIPTION



COUNTY OF
SANTACRUZ
DEPARTMENT OF PUBLIC WORKS
701 Ocean Street, Room 410
Santa Cruz, CA 95060

RAIL TRAIL SEGMENTS 10 & 11
TRAIL NEXT TO THE RAIL LINE (ULTIMATE TRAIL CONFIGURATION)
CONSTRUCTION KEYNOTE PLANS

REFERENCES
FIELD BOOK:
DRAWING #:
CP-0193-06-RWT-S11

DATE 02/10/2023
DRAWN KS
DESIGN KS/MS
CHECKED MS

SCALE AS SHOWN
CP-1.17
VAULT NO.

TRAIL NEXT TO THE RAIL LINE (ULTIMATE TRAIL CONFIGURATION) REFINED SCHEMATIC PLANS - 02/10/23
MATCHLINE, SEE SHEET CP-1.18

DIG ALERT
DIAL TOLL FREE

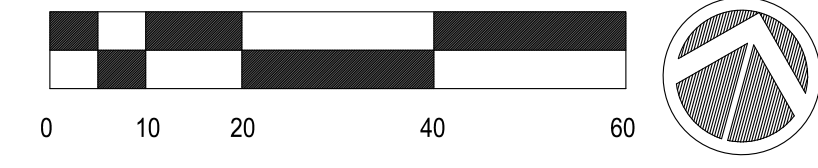
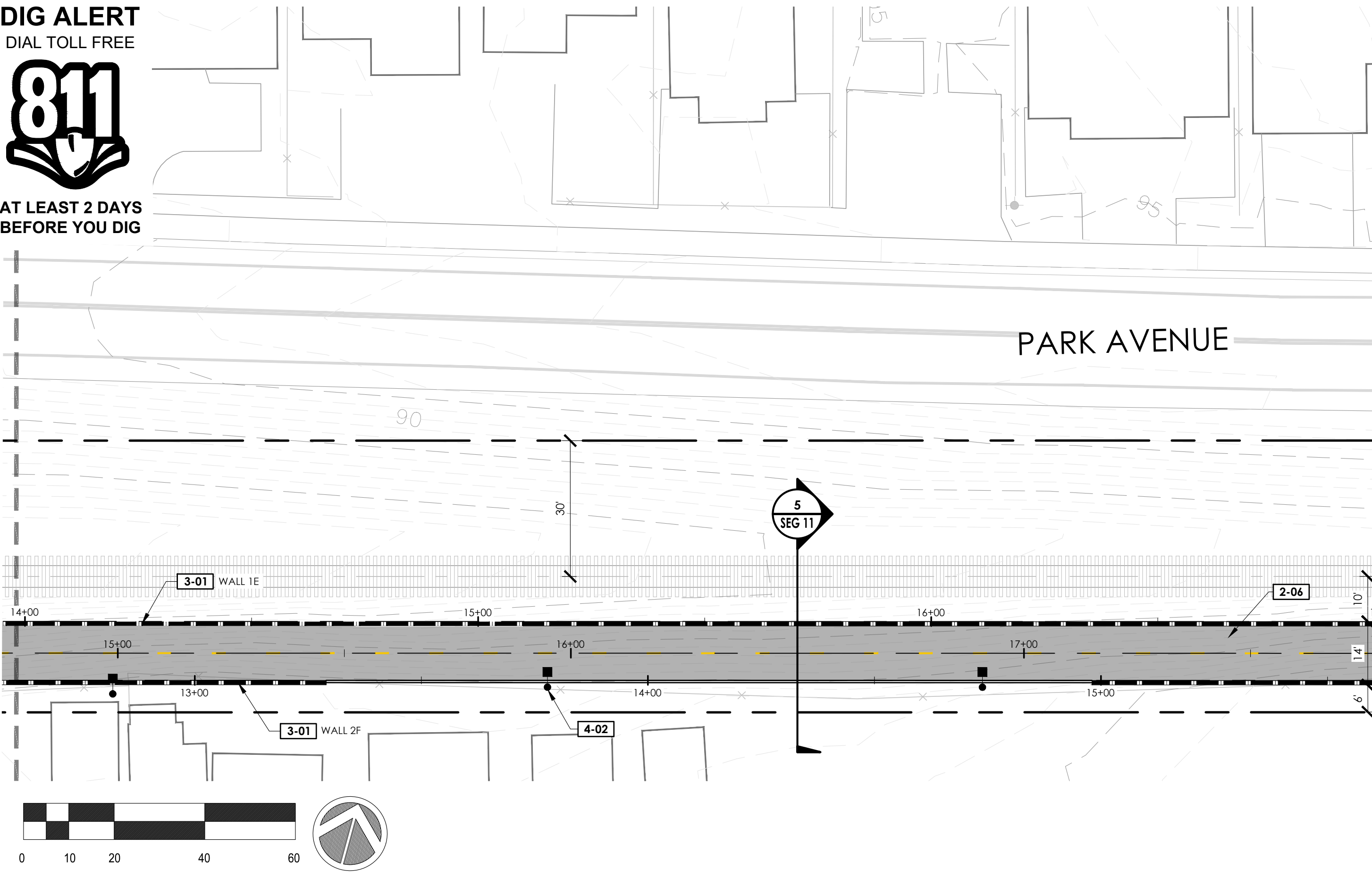


AT LEAST 2 DAYS
BEFORE YOU DIG

KEYMAP



MATCHLINE, SEE SHEET CP-1.17



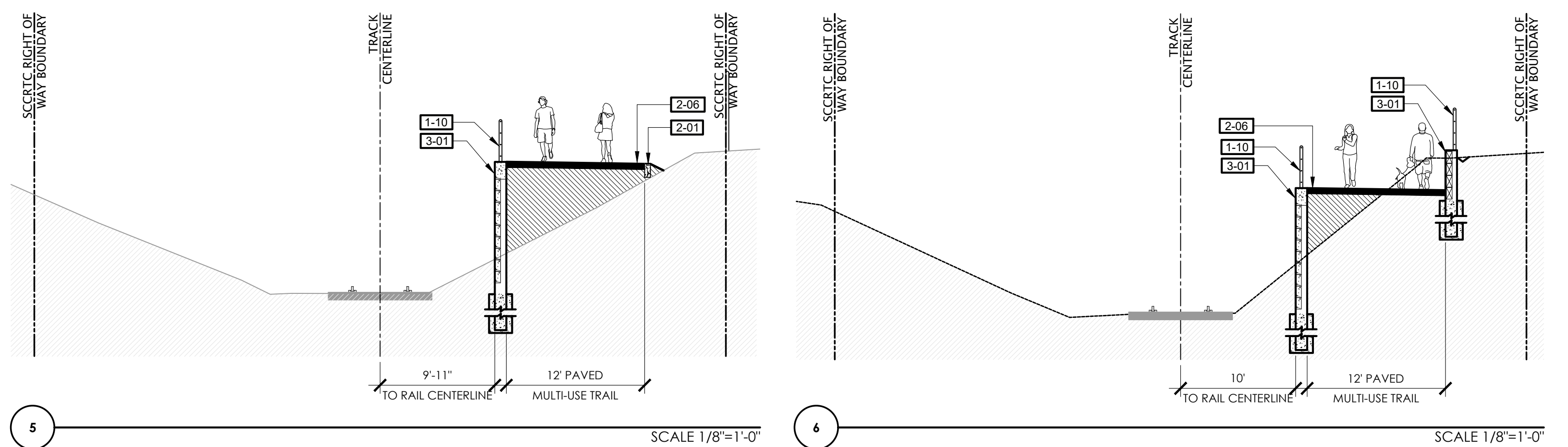
MATCHLINE, SEE SHEET CP-1.19

REFERENCE NOTES SCHEDULE

SYMBOL	DESCRIPTION	SYMBOL	DESCRIPTION
[1-01]	CONCRETE TRACK PANEL	[2-07]	HMA PAVEMENT (ROAD)
[1-02]	SEPARATION FENCING	[2-08]	CONCRETE SIDEWALK
[1-03]	PROPOSED SIGN	[2-09]	CONTINENTAL CROSSWALK STRIPING
[1-04]	RELOCATED PAY STATION	[2-10]	CROSSBIKE MARKINGS
[1-05]	TRASH RECEPTACLES	[2-11]	LADDER CROSSWALK STRIPING
[1-06]	BENCH	[2-12]	PROPOSED AT-GRADE CROSSING
[1-07]	CROSSWALK BARRIER	[2-13]	PROPOSED STAIRS
[1-08]	BIKE RACKS	[2-14]	TRAIL CHICANE
[1-09]	FLEXIBLE BOLLARD	STRUCTURAL	
[1-10]	GUARDRAIL SYSTEM	[3-01]	RETAINING WALL, SEE WP SHEETS
PEDESTRIAN AND TRAFFIC CONTROL		[3-02]	VIADUCT
[2-01]	6" WIDE CURB	[3-03]	ABUTMENT
[2-02]	8" WIDE CURB	[3-04]	BRIDGE
[2-03]	6" CURB AND GUTTER	UTILITIES	
[2-04]	CURB RAMP	[4-01]	PIP EXISTING RAIL EQUIPMENT
[2-05]	DETECTABLE WARNING SURFACE	[4-02]	PROPOSED LIGHT
[2-06]	HMA PAVEMENT (TRAIL)	[4-03]	NEW LIGHT FIXTURE ON EXISTING POLE
		[4-05]	SOLAR LED W1 1-15 CROSSING SIGN

LEGEND

SYMBOL	DESCRIPTION
---	SCRTC RIGHT OF WAY
- - - -	CITY LIMITS
---	EXISTING FENCE
---	FENCE OR GUARDRAIL ON CURB, WALL, VIADUCT OR BRIDGE
---	RETAINING WALL, SEE WP SHEETS
●	PROPOSED LIGHTS
■	CONCRETE PAVEMENT
■	HMA PAVEMENT (TRAIL)
■	VIADUCT WITH FIBERGLASS REINFORCED POLYMER DECK
■	BRIDGE WITH FIBERGLASS REINFORCED POLYMER DECK
■	DECOMPOSED GRANITE
■	DECORATIVE PAVERS



PRELIMINARY
NOT FOR CONSTRUCTION

NO.	DATE	DESCRIPTION

COUNTY OF SANTA CRUZ
DEPARTMENT OF PUBLIC WORKS
701 Ocean Street, Room 410
Santa Cruz, CA 95060

RAIL TRAIL SEGMENTS 10 & 11
TRAIL NEXT TO THE RAIL LINE (ULTIMATE TRAIL CONFIGURATION)
CONSTRUCTION KEYNOTE PLANS

REFERENCES	DATE	02/10/2023	SCALE	AS SHOWN
FIELD BOOK:	DRAWN	KS	CP-1.18	
DRAWING #:	DESIGN	KS/MS	VAULT NO.	
CP-0193-06-RWT-S11	CHECKED	MS		

DIG ALERT
DIAL TOLL FREE



AT LEAST 2 DAYS
BEFORE YOU DIG

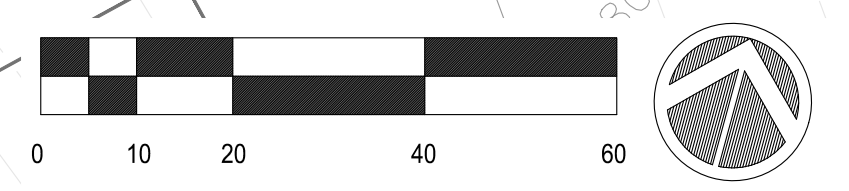
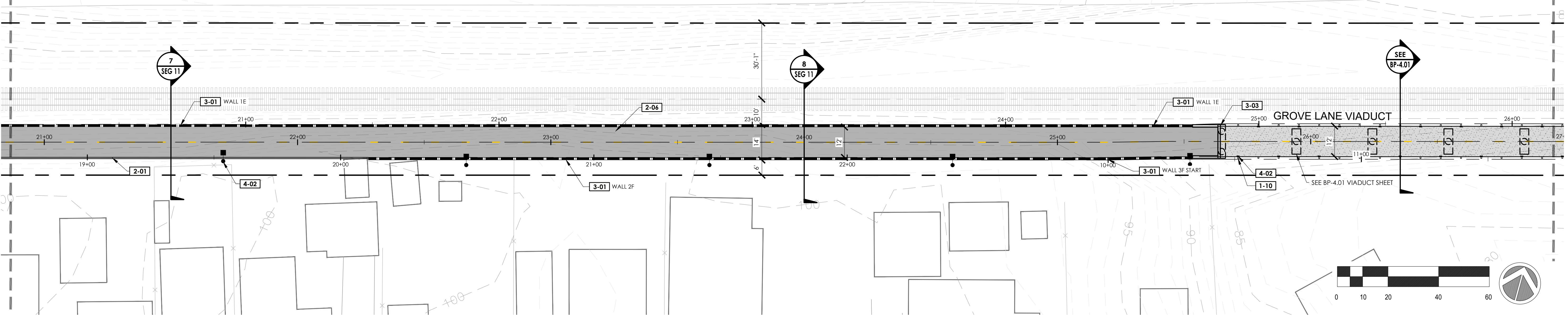
KEYMAP



PARK AVENUE

MATCHLINE, SEE SHEET CP-1.18

MATCHLINE, SEE SHEET CP-1.20

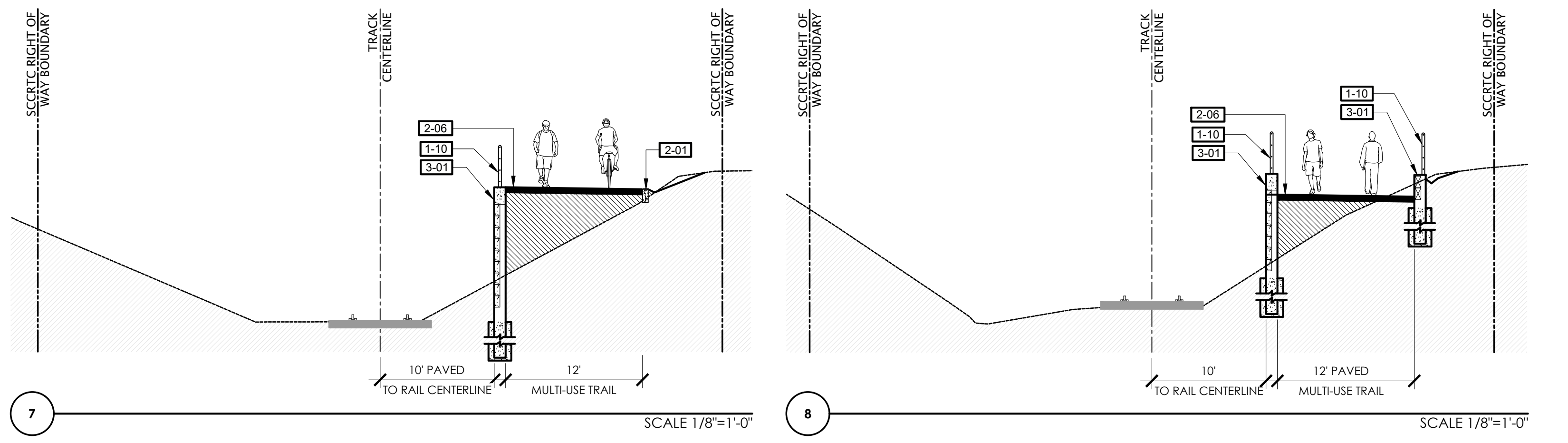


REFERENCE NOTES SCHEDULE

SYMBOL	DESCRIPTION	SYMBOL	DESCRIPTION
1-01	CONCRETE TRACK PANEL	2-07	HMA PAVEMENT (ROAD)
1-02	SEPARATION FENCING	2-08	CONCRETE SIDEWALK
1-03	PROPOSED SIGN	2-09	CONTINENTAL CROSSWALK STRIPING
1-04	RELOCATED PAY STATION	2-10	CROSSBIKE MARKINGS
1-05	TRASH RECEPTACLES	2-11	LADDER CROSSWALK STRIPING
1-06	BENCH	2-12	PROPOSED AT-GRADE CROSSING
1-07	CROSSWALK BARRIER	2-13	PROPOSED STAIRS
1-08	BIKE RACKS	2-14	TRAIL CHICANE
1-09	FLEXIBLE BOLLARD	STRUCTURAL	
1-10	GUARDRAIL SYSTEM	3-01	RETAINING WALL, SEE WP SHEETS
PEDESTRIAN AND TRAFFIC CONTROL		3-02	VIADUCT
2-01	6" WIDE CURB	3-03	ABUTMENT
2-02	8" WIDE CURB	3-04	BRIDGE
2-03	6" CURB AND GUTTER	UTILITIES	
2-04	CURB RAMP	4-01	PIP EXISTING RAIL EQUIPMENT
2-05	DETECTABLE WARNING SURFACE	4-02	PROPOSED LIGHT
2-06	HMA PAVEMENT (TRAIL)	4-03	NEW LIGHT FIXTURE ON EXISTING POLE
		4-05	SOLAR LED W1 I-15 CROSSING SIGN

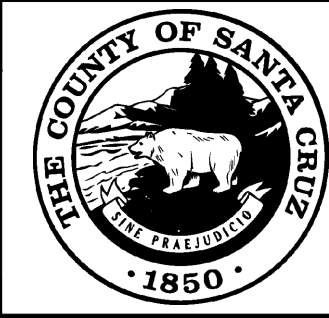
LEGEND

SYMBOL	DESCRIPTION
---	SCRTC RIGHT OF WAY
- - - - -	CITY LIMITS
---	EXISTING FENCE
---	FENCE OR GUARDRAIL ON CURB, WALL, VIADUCT OR BRIDGE
---	RETAINING WALL, SEE WP SHEETS
●	PROPOSED LIGHTS
□	CONCRETE PAVEMENT
▨	HMA PAVEMENT (TRAIL)
▨	VIADUCT WITH FIBERGLASS REINFORCED POLYMER DECK
▨	BRIDGE WITH FIBERGLASS REINFORCED POLYMER DECK
▨	DECOMPOSED GRANITE
▨	DECORATIVE PAVERS



REVISIONS

NO.	DATE	DESCRIPTION



COUNTY OF
SANTACRUZ
DEPARTMENT OF PUBLIC WORKS
701 Ocean Street, Room 410
Santa Cruz, CA 95060

RAIL TRAIL SEGMENTS 10 & 11
TRAIL NEXT TO THE RAIL LINE (ULTIMATE TRAIL CONFIGURATION)
CONSTRUCTION KEYNOTE PLANS

REFERENCES
FIELD BOOK:
DRAWING #:
CP-0193-06-RWT-S11

DATE 02/10/2023
DRAWN KS
DESIGN KS/MS
CHECKED MS

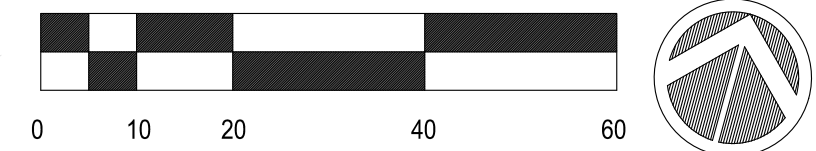
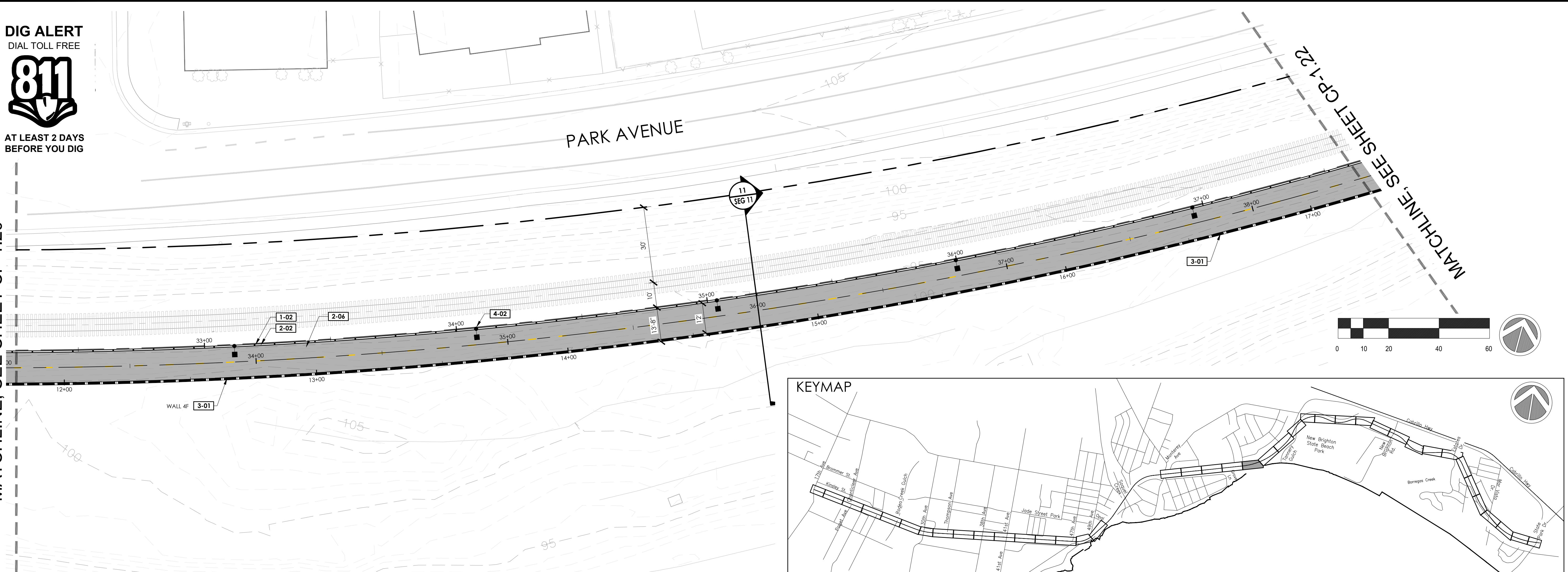
SCALE AS SHOWN
CP-1.19
VAULT NO.

DIG ALERT
DIAL TOLL FREE



AT LEAST 2 DAYS
BEFORE YOU DIG

MATCHLINE, SEE SHEET CP-1.20

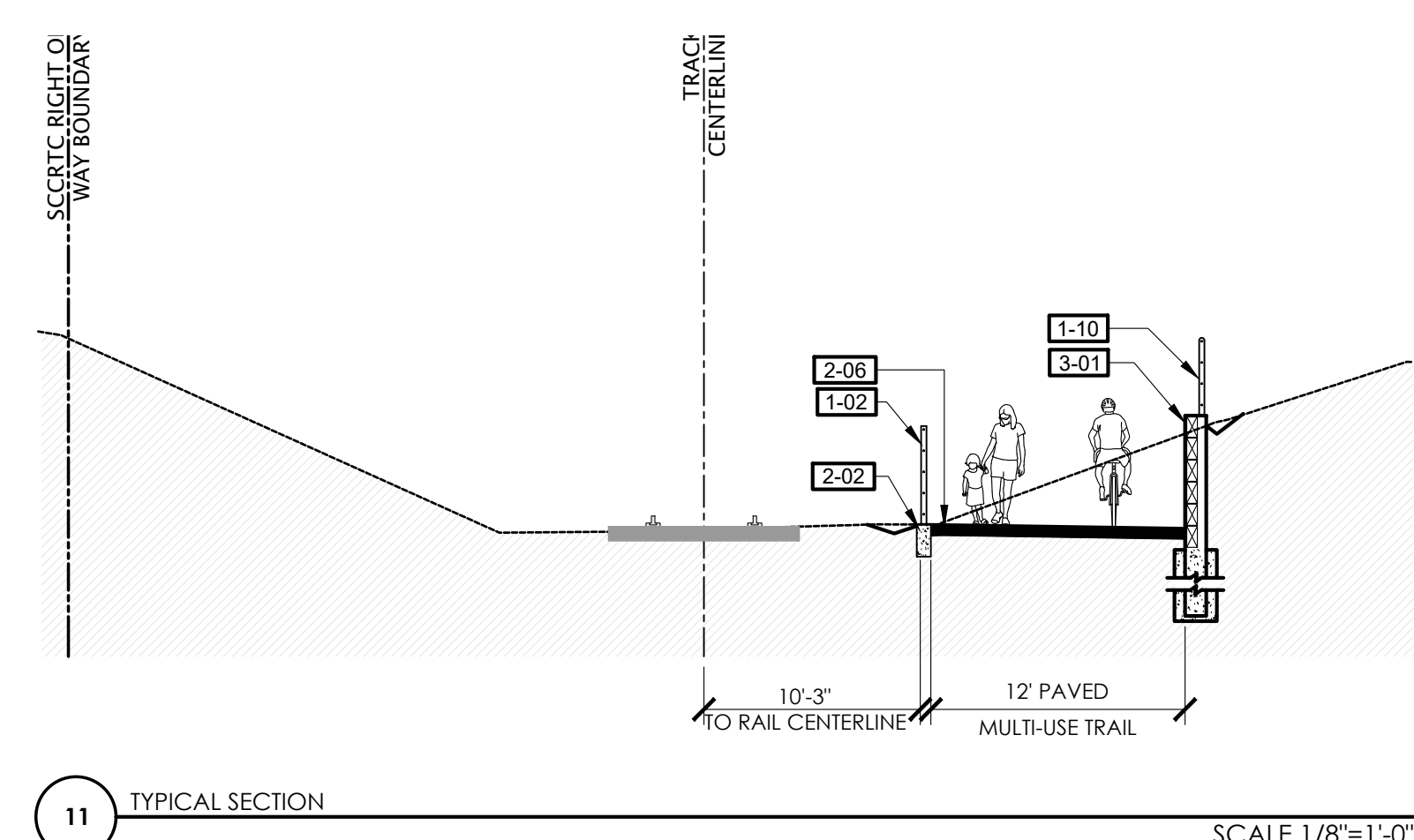


REFERENCE NOTES SCHEDULE

SYMBOL	DESCRIPTION	SYMBOL	DESCRIPTION
1-01	CONCRETE TRACK PANEL	2-07	HMA PAVEMENT (ROAD)
1-02	SEPARATION FENCING	2-08	CONCRETE SIDEWALK
1-03	PROPOSED SIGN	2-09	CONTINENTAL CROSSWALK STRIPING
1-04	RELOCATED PAY STATION	2-10	CROSSBIKE MARKINGS
1-05	TRASH RECEPTACLES	2-11	LADDER CROSSWALK STRIPING
1-06	BENCH	2-12	PROPOSED AT-GRADE CROSSING
1-07	CROSSWALK BARRIER	2-13	PROPOSED STAIRS
1-08	BIKE RACKS	2-14	TRAIL CHICANE
1-09	FLEXIBLE BOLLARD	STRUCTURAL	
1-10	GUARDRAIL SYSTEM	3-01	RETAINING WALL, SEE WP SHEETS
PEDESTRIAN AND TRAFFIC CONTROL		3-02	VIADUCT
2-01	6" WIDE CURB	3-03	ABUTMENT
2-02	8" WIDE CURB	3-04	BRIDGE
2-03	6" CURB AND GUTTER	UTILITIES	
2-04	CURB RAMP	4-01	PIP EXISTING RAIL EQUIPMENT
2-05	DETECTABLE WARNING SURFACE	4-02	PROPOSED LIGHT
2-06	HMA PAVEMENT (TRAIL)	4-03	NEW LIGHT FIXTURE ON EXISTING POLE
		4-05	SOLAR LED W1 1-15 CROSSING SIGN

LEGEND

SYMBOL	DESCRIPTION
---	SCRTC RIGHT OF WAY
- - - - -	CITY LIMITS
---	EXISTING FENCE
---	FENCE OR GUARDRAIL ON CURB, WALL, VIADUCT OR BRIDGE
---	RETAINING WALL, SEE WP SHEETS
●	PROPOSED LIGHTS
■	CONCRETE PAVEMENT
■	HMA PAVEMENT (TRAIL)
■	VIADUCT WITH FIBERGLASS REINFORCED POLYMER DECK
■	BRIDGE WITH FIBERGLASS REINFORCED POLYMER DECK
■	DECOMPOSED GRANITE
■	DECORATIVE PAVERS



SCALE 1/8"=1'-0"

PRELIMINARY
NOT FOR CONSTRUCTION

rrm design group
rrmdesign.com | (949) 361-7950
30302 Camino Capistrano, Ste 205
San Juan Capistrano, CA 92675

REVISIONS

COUNTY OF
SANTACRUZ
DEPARTMENT OF PUBLIC WORKS
701 Ocean Street, Room 410
Santa Cruz, CA 95060

RAIL TRAIL SEGMENTS 10 & 11
TRAIL NEXT TO THE RAIL LINE (ULTIMATE TRAIL CONFIGURATION)
CONSTRUCTION KEYNOTE PLANS

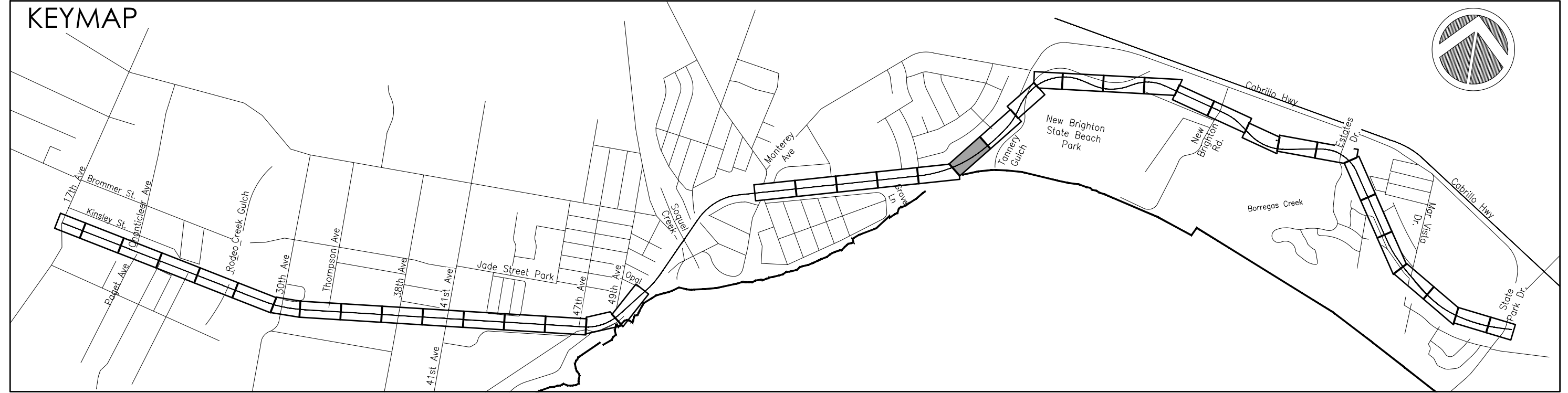
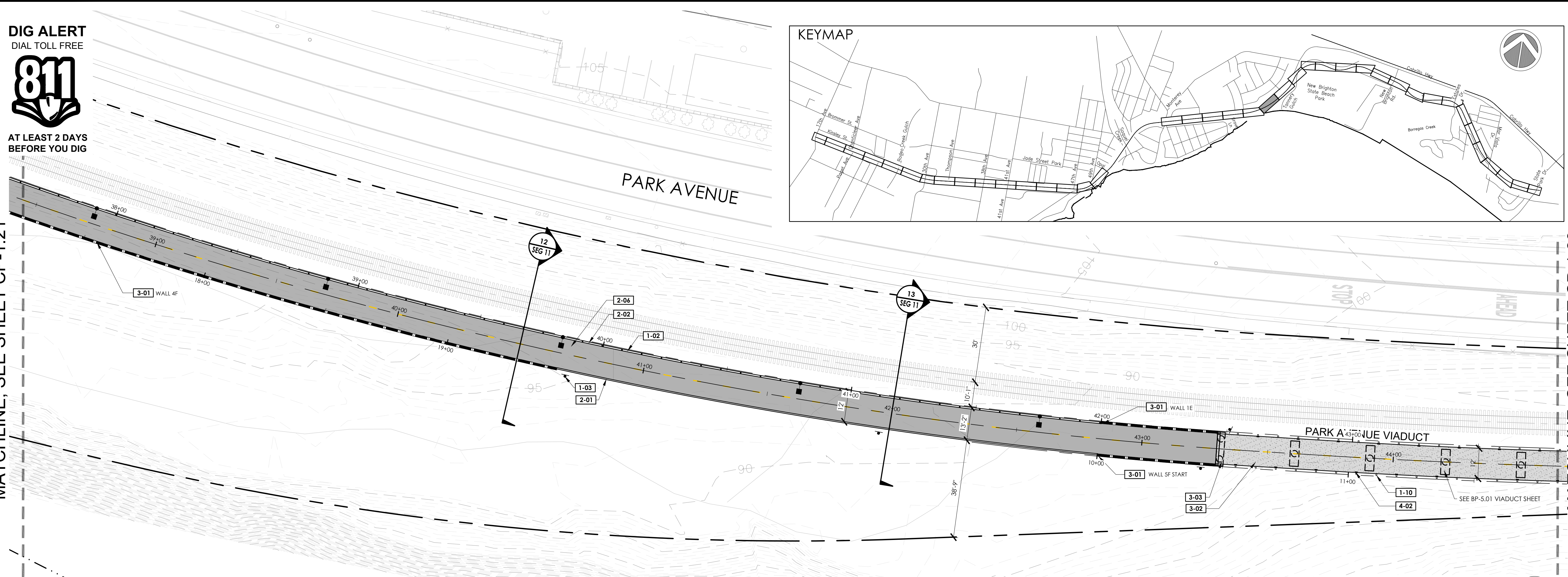
REFERENCES	DATE	SCALE
FIELD BOOK:	02/10/2023	AS SHOWN
DRAWING #:	KS	CP-1.21
CP-0193-06-RWT-S11	KS/MS	VAULT NO.
CHECKED	MS	

TRAIL NEXT TO THE RAIL LINE (ULTIMATE TRAIL CONFIGURATION) REFINED SCHEMATIC PLANS - 02/10/23

DIG ALERT
DIAL TOLL FREE



AT LEAST 2 DAYS
BEFORE YOU DIG



MATCHLINE, SEE SHEET CP-1.21

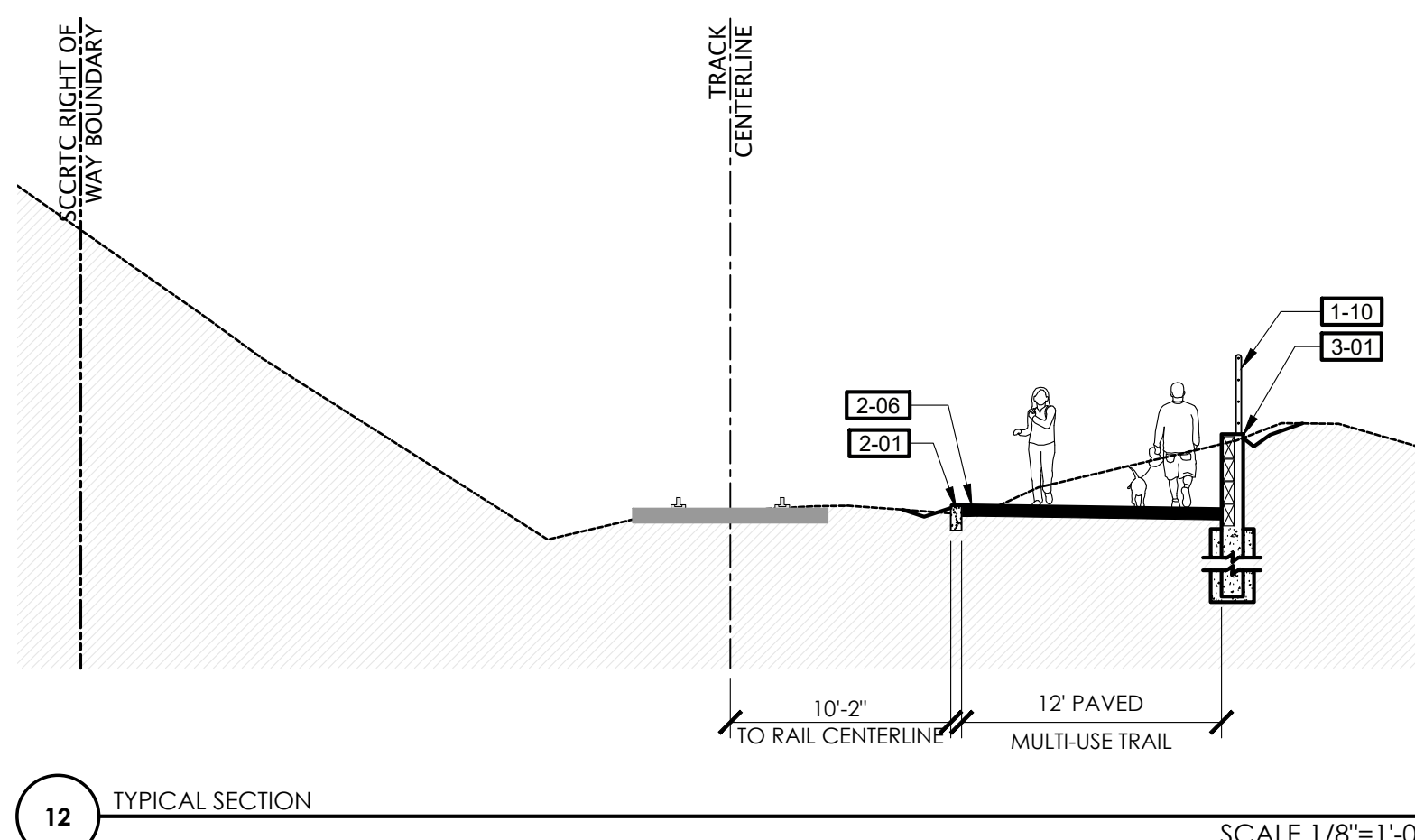
MATCHLINE, SEE SHEET CP-1.23

REFERENCE NOTES SCHEDULE

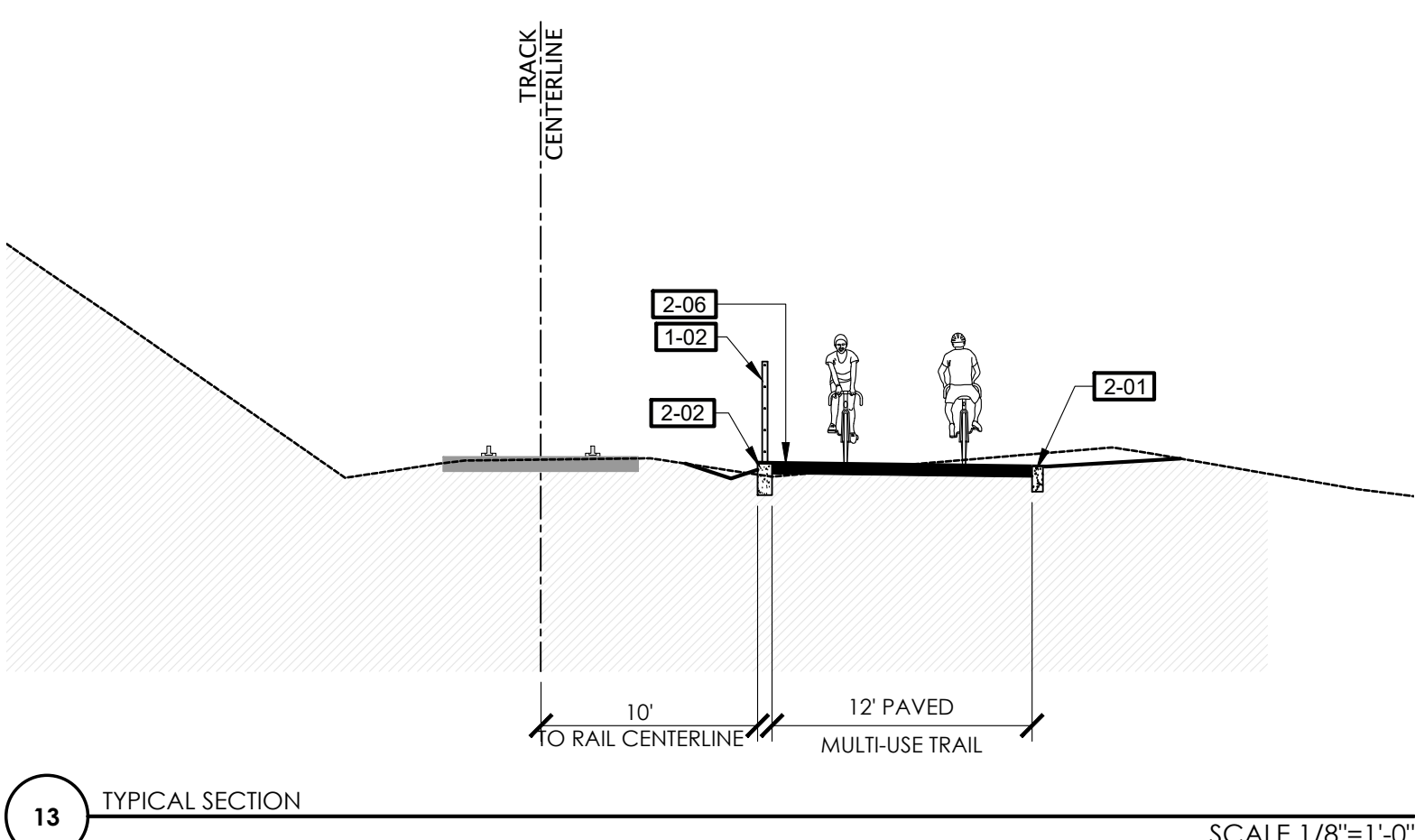
SYMBOL	DESCRIPTION	SYMBOL	DESCRIPTION
1-01	CONCRETE TRACK PANEL	2-07	HMA PAVEMENT (ROAD)
1-02	SEPARATION FENCING	2-08	CONCRETE SIDEWALK
1-03	PROPOSED SIGN	2-09	CONTINENTAL CROSSWALK STRIPING
1-04	RELOCATED PAY STATION	2-10	CROSSBIKE MARKINGS
1-05	TRASH RECEPTACLES	2-11	LADDER CROSSWALK STRIPING
1-06	BENCH	2-12	PROPOSED AT-GRADE CROSSING
1-07	CROSSWALK BARRIER	2-13	PROPOSED STAIRS
1-08	BIKE RACKS	2-14	TRAIL CHICANE
1-09	FLEXIBLE BOLLARD	STRUCTURAL	
1-10	GUARDRAIL SYSTEM	3-01	RETAINING WALL, SEE WP SHEETS
PEDESTRIAN AND TRAFFIC CONTROL		3-02	VIADUCT
2-01	6" WIDE CURB	3-03	ABUTMENT
2-02	8" WIDE CURB	3-04	BRIDGE
2-03	6" CURB AND GUTTER	UTILITIES	
2-04	CURB RAMP	4-01	PIP EXISTING RAIL EQUIPMENT
2-05	DETECTABLE WARNING SURFACE	4-02	PROPOSED LIGHT
2-06	HMA PAVEMENT (TRAIL)	4-03	NEW LIGHT FIXTURE ON EXISTING POLE
		4-05	SOLAR LED W1 1-15 CROSSING SIGN

LEGEND

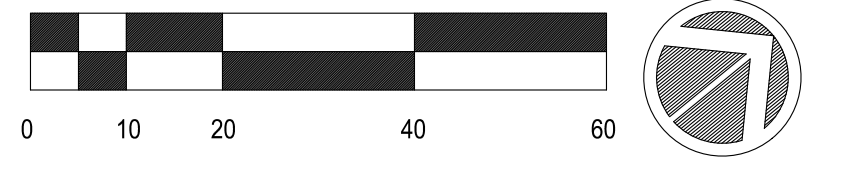
SYMBOL	DESCRIPTION
---	SCRTC RIGHT OF WAY
- - - - -	CITY LIMITS
---	EXISTING FENCE
---	FENCE OR GUARDRAIL ON CURB, WALL, VIADUCT OR BRIDGE
---	RETAINING WALL, SEE WP SHEETS
●	PROPOSED LIGHTS
■	CONCRETE PAVEMENT
■	HMA PAVEMENT (TRAIL)
■	VIADUCT WITH FIBERGLASS REINFORCED POLYMER DECK
■	BRIDGE WITH FIBERGLASS REINFORCED POLYMER DECK
■	DECOMPOSED GRANITE
■	DECORATIVE PAVERS



12 TYPICAL SECTION

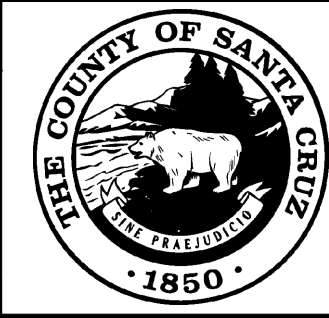


13 TYPICAL SECTION



PRELIMINARY
NOT FOR CONSTRUCTION

NO.	DATE	DESCRIPTION



COUNTY OF
SANTACRUZ
DEPARTMENT OF PUBLIC WORKS
701 Ocean Street, Room 410
Santa Cruz, CA 95060

RAIL TRAIL SEGMENTS 10 & 11
TRAIL NEXT TO THE RAIL LINE (ULTIMATE TRAIL CONFIGURATION)
CONSTRUCTION KEYNOTE PLANS

REFERENCES
FIELD BOOK:
DRAWING #:
CP-0193-06-RWT-S11

DATE 02/10/2023
DRAWN KS
DESIGN KS/MS
CHECKED MS

SCALE AS SHOWN
CP-1.22
VAULT NO.

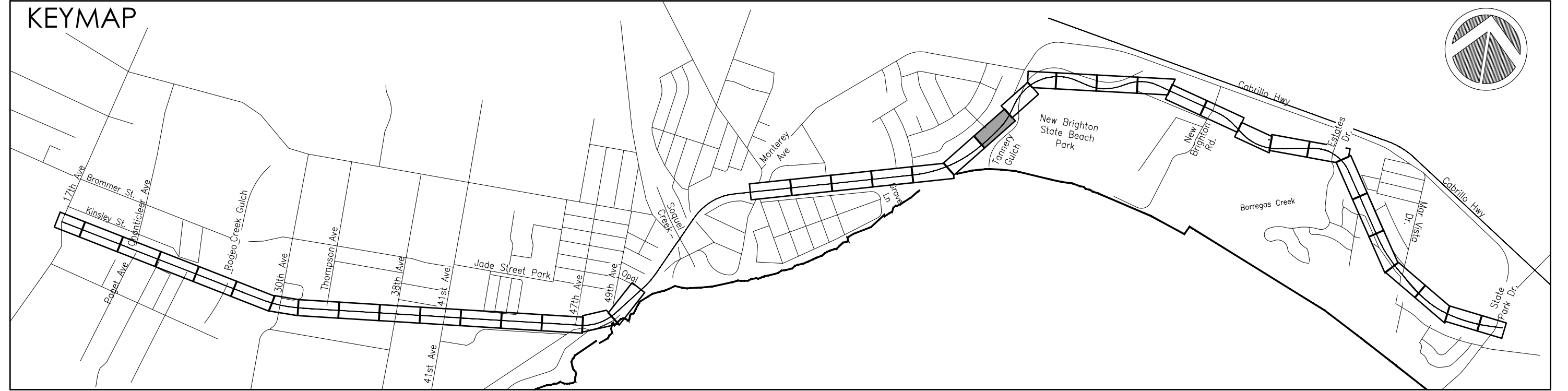
TRAIL NEXT TO THE RAIL LINE (ULTIMATE TRAIL CONFIGURATION) REFINED SCHEMATIC PLANS - 02/10/23

DIG ALERT
DIAL TOLL FREE



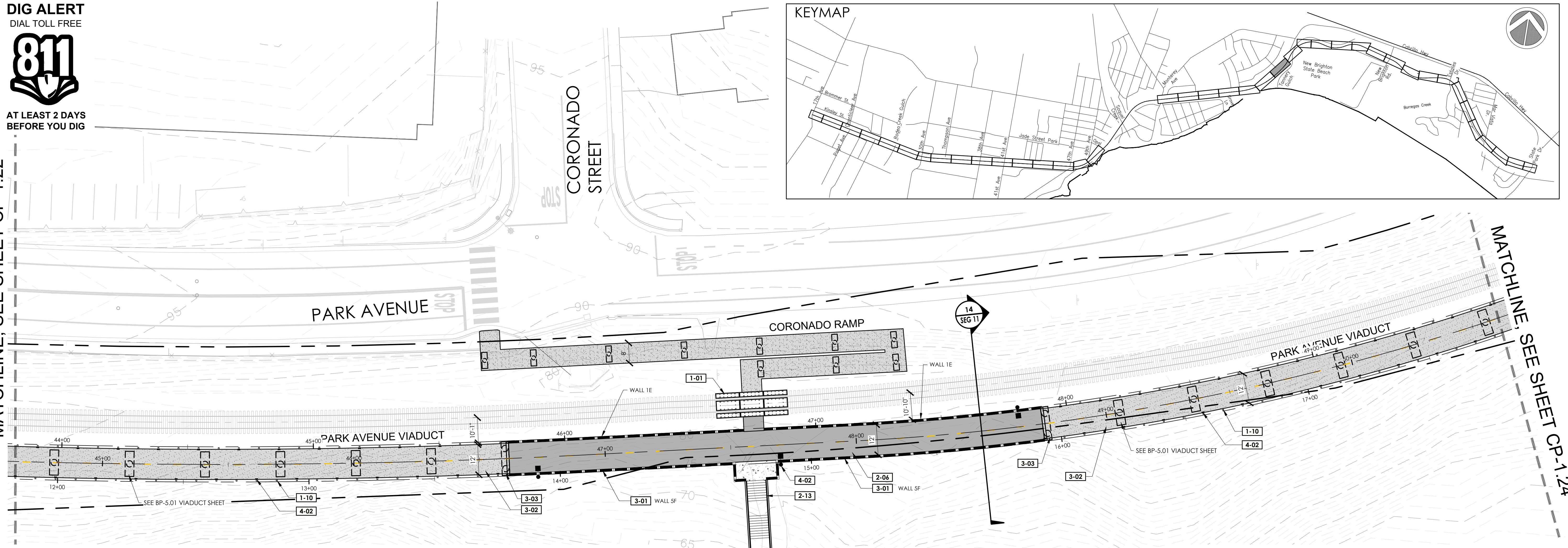
AT LEAST 2 DAYS
BEFORE YOU DIG

KEYMAP



MATCHLINE, SEE SHEET CP-1.22

MATCHLINE, SEE SHEET CP-1.24

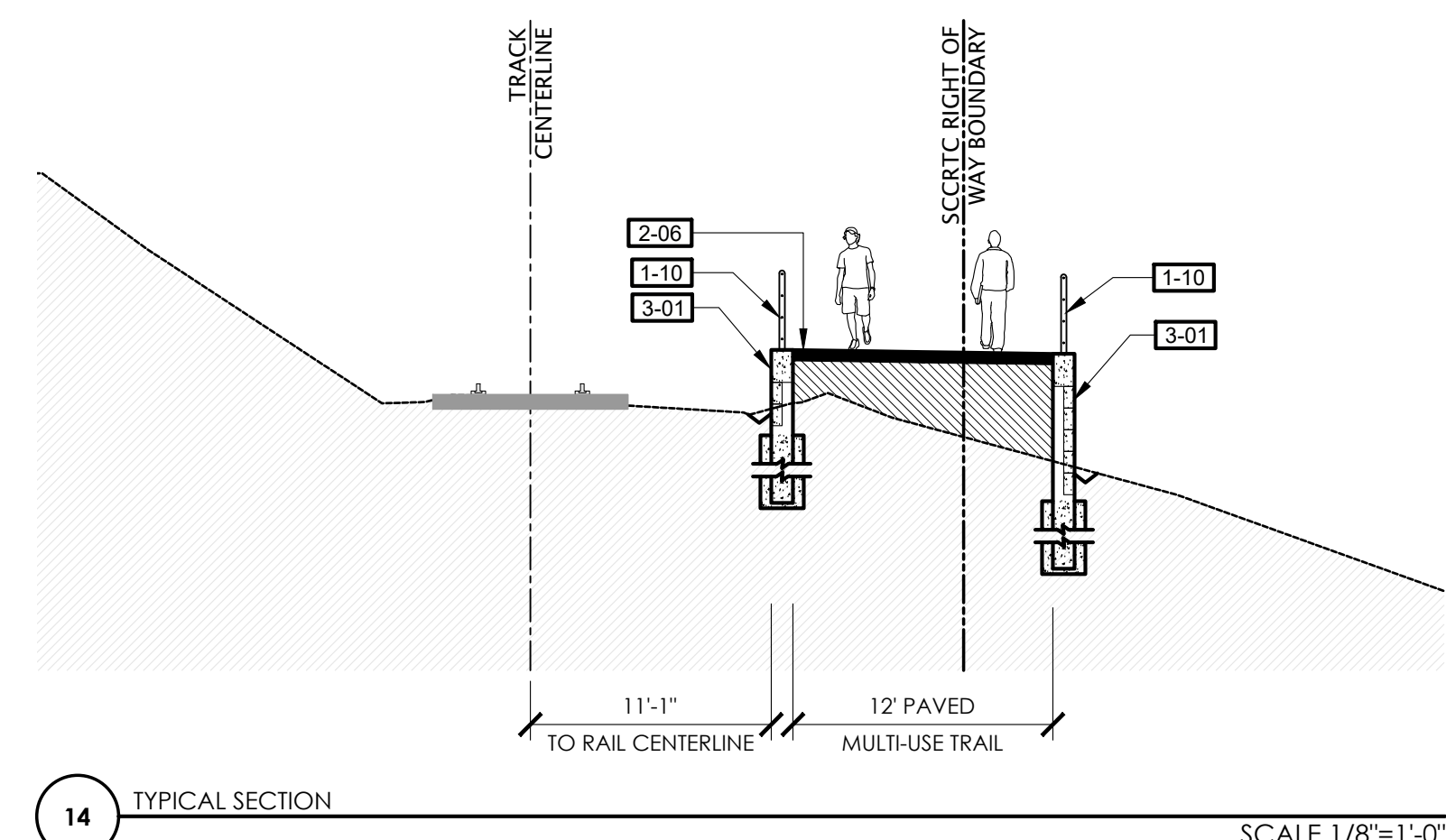
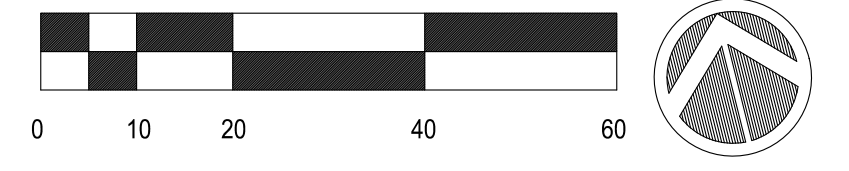


REFERENCE NOTES SCHEDULE

SYMBOL	DESCRIPTION	SYMBOL	DESCRIPTION
1-01	CONCRETE TRACK PANEL	2-07	HMA PAVEMENT (ROAD)
1-02	SEPARATION FENCING	2-08	CONCRETE SIDEWALK
1-03	PROPOSED SIGN	2-09	CONTINENTAL CROSSWALK STRIPING
1-04	RELOCATED PAY STATION	2-10	CROSSBIKE MARKINGS
1-05	TRASH RECEPTACLES	2-11	LADDER CROSSWALK STRIPING
1-06	BENCH	2-12	PROPOSED AT-GRADE CROSSING
1-07	CROSSWALK BARRIER	2-13	PROPOSED STAIRS
1-08	BIKE RACKS	2-14	TRAIL CHICANE
1-09	FLEXIBLE BOLLARD	STRUCTURAL	
1-10	GUARDRAIL SYSTEM	3-01	RETAINING WALL, SEE WP SHEETS
PEDESTRIAN AND TRAFFIC CONTROL		3-02	VIADUCT
2-01	6" WIDE CURB	3-03	ABUTMENT
2-02	8" WIDE CURB	3-04	BRIDGE
2-03	6" CURB AND GUTTER	UTILITIES	
2-04	CURB RAMP	4-01	PIP EXISTING RAIL EQUIPMENT
2-05	DETECTABLE WARNING SURFACE	4-02	PROPOSED LIGHT
2-06	HMA PAVEMENT (TRAIL)	4-03	NEW LIGHT FIXTURE ON EXISTING POLE
		4-05	SOLAR LED W1 I-15 CROSSING SIGN

LEGEND

SYMBOL	DESCRIPTION
---	SCRTC RIGHT OF WAY
- - - - -	CITY LIMITS
---	EXISTING FENCE
---	FENCE OR GUARDRAIL ON CURB, WALL, VIADUCT OR BRIDGE
---	RETAINING WALL, SEE WP SHEETS
●	PROPOSED LIGHTS
■	CONCRETE PAVEMENT
■	HMA PAVEMENT (TRAIL)
■	VIADUCT WITH FIBERGLASS REINFORCED POLYMER DECK
■	BRIDGE WITH FIBERGLASS REINFORCED POLYMER DECK
■	DECOMPOSED GRANITE
■	DECORATIVE PAVERS

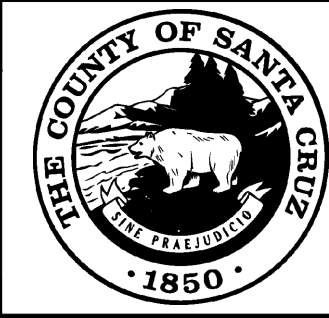


14 TYPICAL SECTION SCALE 1/8"=1'-0"

PRELIMINARY
NOT FOR CONSTRUCTION

rrm design group
rrmdesign.com | (949) 361-7950
30302 Camino Capistrano, Ste 205
San Juan Capistrano, CA 92675

REVISIONS



COUNTY OF
SANTACRUZ
DEPARTMENT OF PUBLIC WORKS
701 Ocean Street, Room 410
Santa Cruz, CA 95060

RAIL TRAIL SEGMENTS 10 & 11
TRAIL NEXT TO THE RAIL LINE (ULTIMATE TRAIL CONFIGURATION)
CONSTRUCTION KEYNOTE PLANS

REFERENCES
FIELD BOOK:
DRAWING #:
CP-0193-06-RWT-S11

DATE 02/10/2023
DRAWN KS
DESIGN KS/MS
CHECKED MS

SCALE AS SHOWN
CP-1.23
VAULT NO.

TRAIL NEXT TO THE RAIL LINE (ULTIMATE TRAIL CONFIGURATION) REFINED SCHEMATIC PLANS - 02/10/23

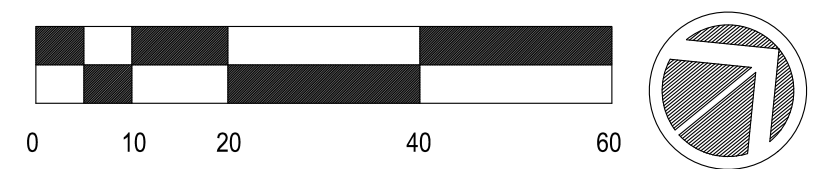
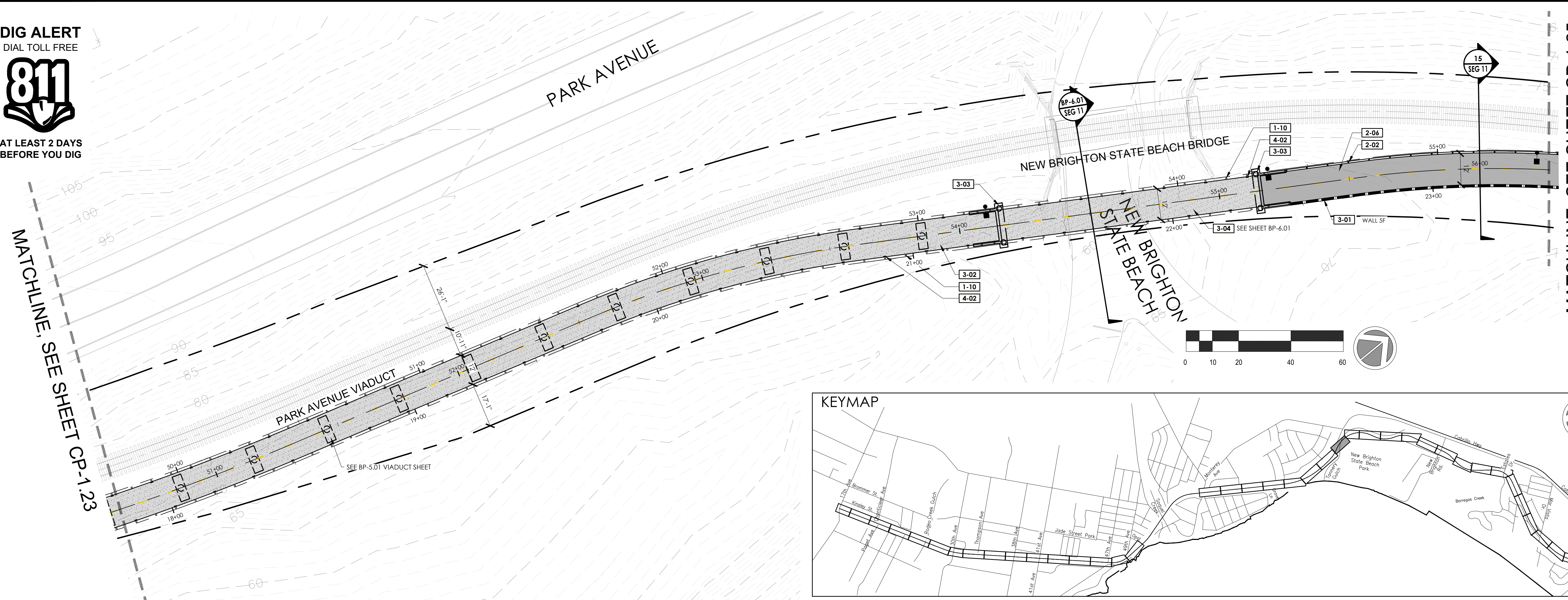
DIG ALERT
DIAL TOLL FREE



AT LEAST 2 DAYS
BEFORE YOU DIG

MATCHLINE, SEE SHEET CP-1.23

MATCHLINE, SEE SHEET CP-1.25



REFERENCE NOTES SCHEDULE

SYMBOL	DESCRIPTION	SYMBOL	DESCRIPTION
1-01	CONCRETE TRACK PANEL	2-07	HMA PAVEMENT (ROAD)
1-02	SEPARATION FENCING	2-08	CONCRETE SIDEWALK
1-03	PROPOSED SIGN	2-09	CONTINENTAL CROSSWALK STRIPING
1-04	RELOCATED PAY STATION	2-10	CROSSBIKE MARKINGS
1-05	TRASH RECEPTACLES	2-11	LADDER CROSSWALK STRIPING
1-06	BENCH	2-12	PROPOSED AT-GRADE CROSSING
1-07	CROSSWALK BARRIER	2-13	PROPOSED STAIRS
1-08	BIKE RACKS	2-14	TRAIL CHICANE
1-09	FLEXIBLE BOLLARD	STRUCTURAL	
1-10	GUARDRAIL SYSTEM	3-01	RETAINING WALL, SEE WP SHEETS
PEDESTRIAN AND TRAFFIC CONTROL		3-02	VIADUCT
2-01	6" WIDE CURB	3-03	ABUTMENT
2-02	8" WIDE CURB	3-04	BRIDGE
2-03	6" CURB AND GUTTER	UTILITIES	
2-04	CURB RAMP	4-01	PIP EXISTING RAIL EQUIPMENT
2-05	DETECTABLE WARNING SURFACE	4-02	PROPOSED LIGHT
2-06	HMA PAVEMENT (TRAIL)	4-03	NEW LIGHT FIXTURE ON EXISTING POLE
		4-05	SOLAR LED W11-15 CROSSING SIGN

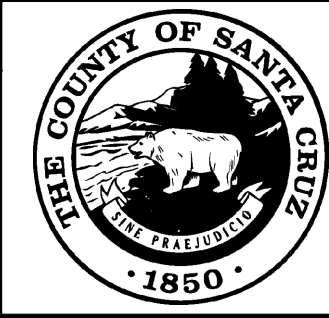
LEGEND

SYMBOL	DESCRIPTION
	SCRTC RIGHT OF WAY
	CITY LIMITS
	EXISTING FENCE
	FENCE OR GUARDRAIL ON CURB, WALL, VIADUCT OR BRIDGE
	RETAINING WALL, SEE WP SHEETS
	PROPOSED LIGHTS
	CONCRETE PAVEMENT
	HMA PAVEMENT (TRAIL)
	VIADUCT WITH FIBERGLASS REINFORCED POLYMER DECK
	BRIDGE WITH FIBERGLASS REINFORCED POLYMER DECK
	DECOMPOSED GRANITE
	DECORATIVE PAVERS

15 TYPICAL SECTION SCALE 1/8"=1'-0"

PRELIMINARY
NOT FOR CONSTRUCTION

REVISIONS



COUNTY OF
SANTACRUZ
DEPARTMENT OF PUBLIC WORKS
701 Ocean Street, Room 410
Santa Cruz, CA 95060

RAIL TRAIL SEGMENTS 10 & 11
TRAIL NEXT TO THE RAIL LINE (ULTIMATE TRAIL CONFIGURATION)
CONSTRUCTION KEYNOTE PLANS

REFERENCES
FIELD BOOK:
DRAWING #:
CP-0193-06-RWT-S11

DATE 02/10/2023
DRAWN KS
DESIGN KS/MS
CHECKED MS

SCALE AS SHOWN
CP-1.24
VAULT NO.

TRAIL NEXT TO THE RAIL LINE (ULTIMATE TRAIL CONFIGURATION) REFINED SCHEMATIC PLANS - 02/10/23