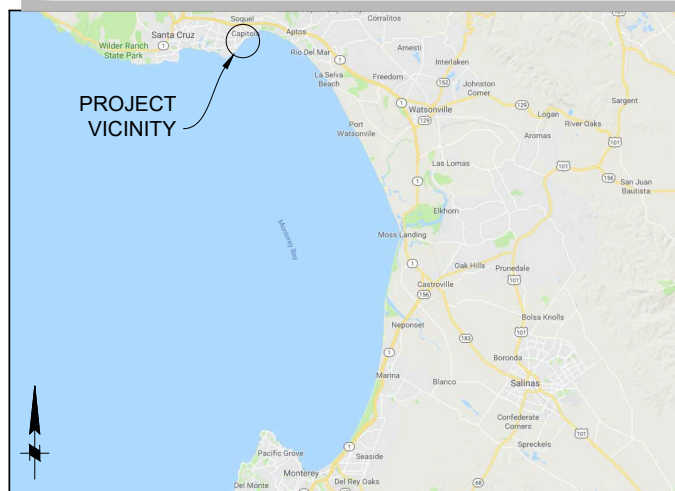


CAPITOLA WHARF

RESILIENCY AND PUBLIC ACCESS

IMPROVEMENT PHASE 2



VICINITY MAP
SCALE: NTS



LOCATION PLAN
SCALE: NTS

TIDAL DATUM (MONTEREY GAUGE)

HIGHEST OBSERVED TIDE	+7.88ft
HIGHEST ASTRONOMICAL TIDE	+7.07ft
MEAN HIGHER HIGH WATER (MHHW)	+5.33ft
MEAN SEA LEVEL (MSL)	+2.83ft
MEAN LOWER LOW WATER (MLLW)	0ft
NORTH AMERICAN VERTICAL DATUM (NAVD)	-0.13ft
LOWEST ASTRONOMICAL TIDE	-1.94ft
LOWEST OBSERVED TIDE	-2.33ft



APPROVED, CITY OF CAPITOLA

Jessica Kahn

REF 81258



Rev	Date	Change	By

**CAPITOLA WHARF
RESILIENCY AND PUBLIC ACCESS
IMPROVEMENT PHASE 2**

TITLE SHEET

Drawn by AC	Date 4/18/2023	Checked by AC	Scale AS SHOWN
Design by AC	M&E Project No. 115401	Reviewed by AC	Drawing scale
Drawn by MOONATA & MICHEL	Drawn date 1/10/2023	Reviewed by CAMEPA, ALLISON, STEVEN	Reference 1/10/2023 8:27 AM

1855 N. CALIFORNIA BLVD.
SUITE 200
WALNUT CREEK, CA 94696



Sheet Reference No.
G-001

INDEX: 1 OF 32

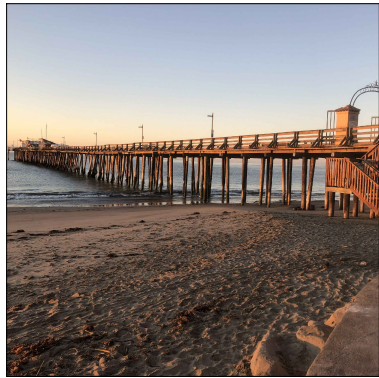


PHOTO 1
OVERALL VIEW OF WHARF



PHOTO 2
ENTRY GATE



PHOTO 3
WHARF BELOW CRANE

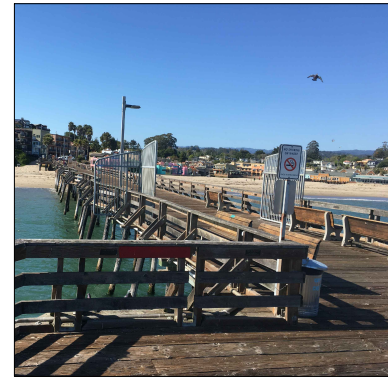


PHOTO 4
SECURITY GATE



PHOTO 5
TRESTLE

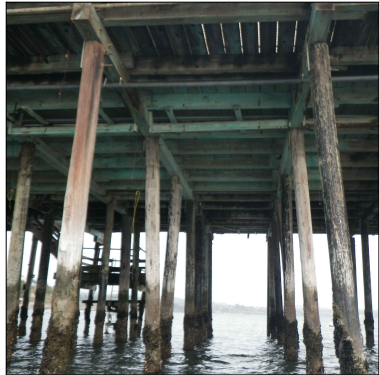


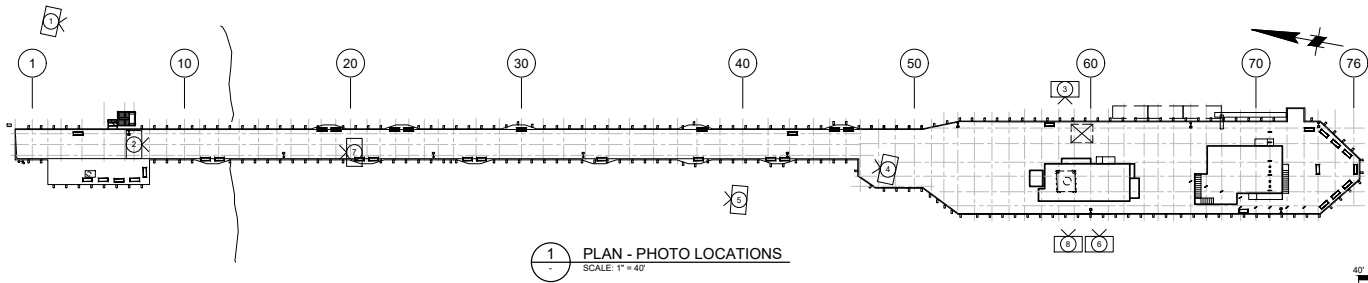
PHOTO 6
BELOW DECK AT BENT 61



PHOTO 7
UTILITIES BELOW DECK



PHOTO 8
UTILITIES AT SEWAGE EJECTOR PUMP



No.	DATE	REVISION

**CAPITOLA WHARF
RESILIENCY AND PUBLIC ACCESS
IMPROVEMENT PHASE 2**

EXISTING PHOTOS 1 OF 2

Prepared by: AC
 Date: 4/18/2023
 MMR Project No.: 0154501
 Drawing scale:
 Drawing date:
 Checked by: MOYNIHAN & MICHELLE
 Date: 1/11/2023

3185 W. CALIFORNIA BLVD.
 SUITE 200
 WALNUT CREEK, CA 94596



Sheet Reference No.
G-003
 INDEX: 3 OF 37



No.	Date	Rev.

**CAPITOLA WHARF
RESILIENCY AND PUBLIC ACCESS
IMPROVEMENT PHASE 2**

OVERALL WHARF

Date:	4/18/2023	Drawn:	AC	Scale:	1" = 30'
MM Project No.:	0154-01	GP:	AC		
Drawn scale:					
Drawn by:	MOVITA & NICHOL				
Permit No.:	11 (D-BI-BET)				

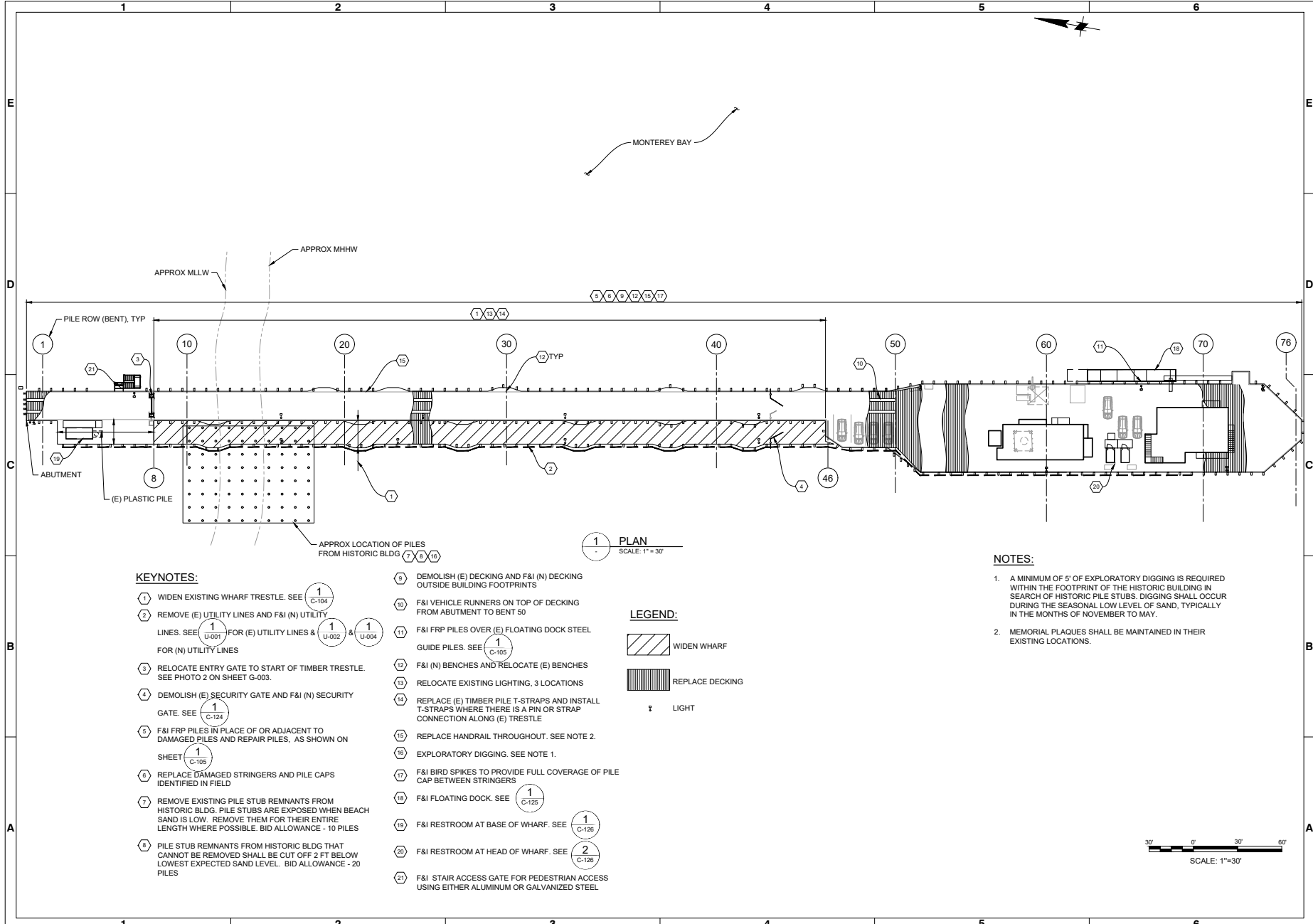
Designed by:	AC	Drawn by:	AC	Scale:	1" = 30'
Checked by:		GP:	AC		
Drawn scale:					
Drawn by:	MOVITA & NICHOL				
Permit No.:	11 (D-BI-BET)				

288A CALIFORNIA BLVD.
SUITE 100
WALNUT CREEK, CA 94596



Sheet Reference No.	C-103
INDEX:	8 OF 37

File: C:\MCTD\154-01\Capitol Wharf Resiliency and Public Access\Wharf_Street_Seam_154-01-C-103.dwg, 4/18/2023 1:15 PM By: AC-ANP/A



KEYNOTES:

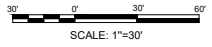
- | | |
|--|---|
| <ul style="list-style-type: none"> 1 WIDEN EXISTING WHARF TRESTLE. SEE ¹C-104 2 REMOVE (E) UTILITY LINES AND F&I (N) UTILITY LINES. SEE ¹U-001 FOR (E) UTILITY LINES & ¹U-002 & ¹U-004 FOR (N) UTILITY LINES 3 RELOCATE ENTRY GATE TO START OF TIMBER TRESTLE. SEE PHOTO 2 ON SHEET G-003. 4 DEMOLISH (E) SECURITY GATE AND F&I (N) SECURITY GATE. SEE ¹C-124 5 F&I FRP PILES IN PLACE OF OR ADJACENT TO DAMAGED PILES AND REPAIR PILES, AS SHOWN ON SHEET ¹G-105 6 REPLACE DAMAGED STRINGERS AND PILE CAPS IDENTIFIED IN FIELD 7 REMOVE EXISTING PILE STUB REMNANTS FROM HISTORIC BLDG. PILE STUBS ARE EXPOSED WHEN BEACH SAND IS LOW. REMOVE THEM FOR THEIR ENTIRE LENGTH WHERE POSSIBLE. BID ALLOWANCE - 10 PILES 8 PILE STUB REMNANTS FROM HISTORIC BLDG THAT CANNOT BE REMOVED SHALL BE CUT OFF 2 FT BELOW LOWEST EXPECTED SAND LEVEL. BID ALLOWANCE - 20 PILES | <ul style="list-style-type: none"> 9 DEMOLISH (E) DECKING AND F&I (N) DECKING OUTSIDE BUILDING FOOTPRINTS 10 F&I VEHICLE RUNNERS ON TOP OF DECKING FROM ABUTMENT TO BENT 50 11 F&I FRP PILES OVER (E) FLOATING DOCK STEEL GUIDE PILES. SEE ¹C-105 12 F&I (N) BENCHES AND RELOCATE (E) BENCHES 13 RELOCATE EXISTING LIGHTING, 3 LOCATIONS 14 REPLACE (E) TIMBER PILE T-STRAPS AND INSTALL T-STRAPS WHERE THERE IS A PIN OR STRAP CONNECTION ALONG (E) TRESTLE 15 REPLACE HANDRAIL THROUGHOUT. SEE NOTE 2. 16 EXPLORATORY DIGGING. SEE NOTE 1. 17 F&I BIRD SPIKES TO PROVIDE FULL COVERAGE OF PILE CAP BETWEEN STRINGERS 18 F&I FLOATING DOCK. SEE ¹C-125 19 F&I RESTROOM AT BASE OF WHARF. SEE ¹C-126 20 F&I RESTROOM AT HEAD OF WHARF. SEE ²C-126 21 F&I STAIR ACCESS GATE FOR PEDESTRIAN ACCESS USING EITHER ALUMINUM OR GALVANIZED STEEL |
|--|---|

LEGEND:

- WIDEN WHARF
- REPLACE DECKING
- LIGHT

NOTES:

- A MINIMUM OF 6' OF EXPLORATORY DIGGING IS REQUIRED WITHIN THE FOOTPRINT OF THE HISTORIC BUILDING IN SEARCH OF HISTORIC PILE STUBS. DIGGING SHALL OCCUR DURING THE SEASONAL LOW LEVEL OF SAND, TYPICALLY IN THE MONTHS OF NOVEMBER TO MAY.
- MEMORIAL PLAQUES SHALL BE MAINTAINED IN THEIR EXISTING LOCATIONS.



DRAWING SCALES SHOWN BASED ON 22"x34" DRAWING



Rev	Date	Description

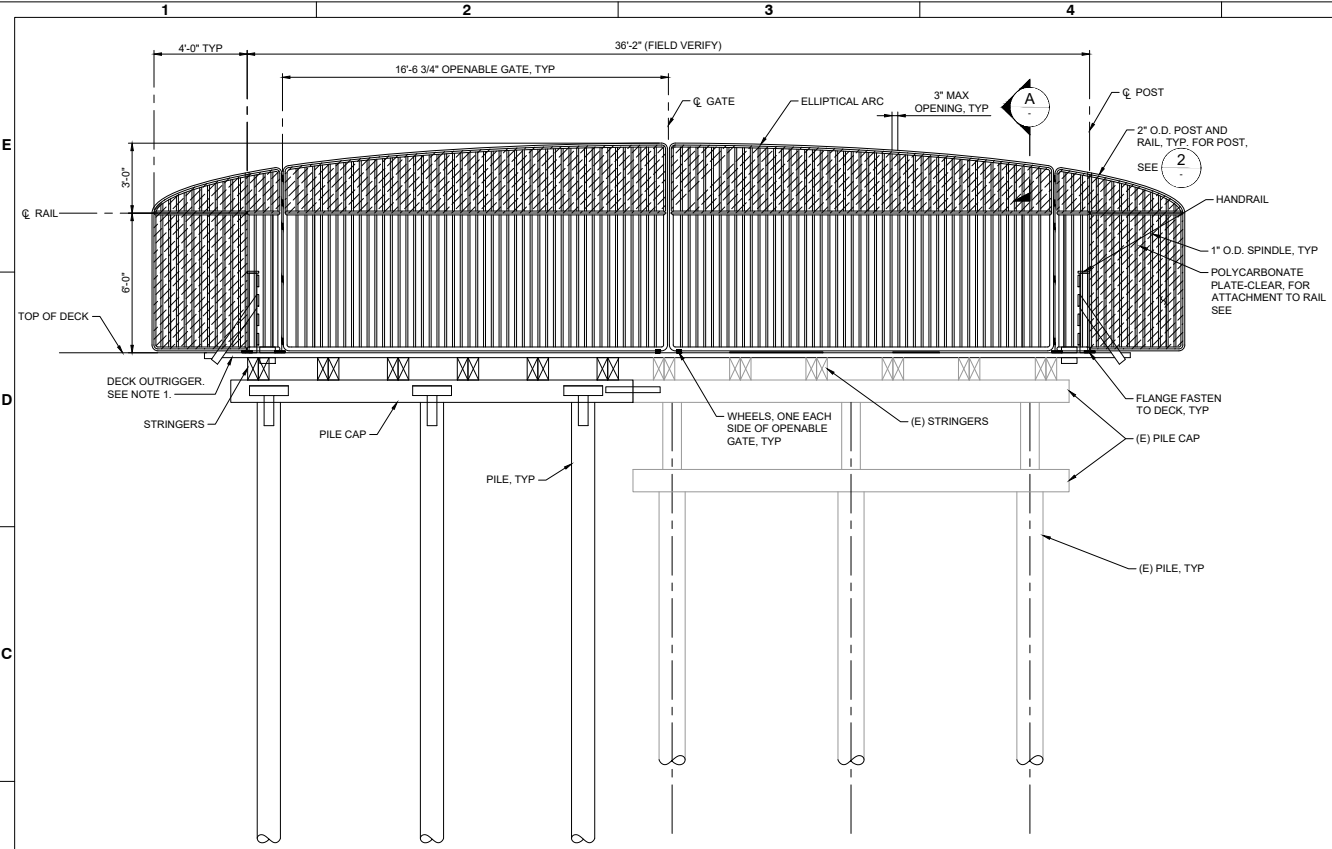
**CAPITOLA WHARF
RESILIENCY AND PUBLIC ACCESS
IMPROVEMENT PHASE 2
SECURITY GATE DETAILS**

Drawn by: AC	Check by: AC	Reviewed by: MOSKATIS & NICHOL
Date: 4/18/2023	MM Project No: 1154-01	Drawing scale: 1" = 1'-0"

11855 CALIFORNIA BLVD.
SUITE 100
WALNUT CREEK, CA 94596



Sheet Reference No.
C-124
INDEX: 21 OF 37



SPECIFICATIONS:

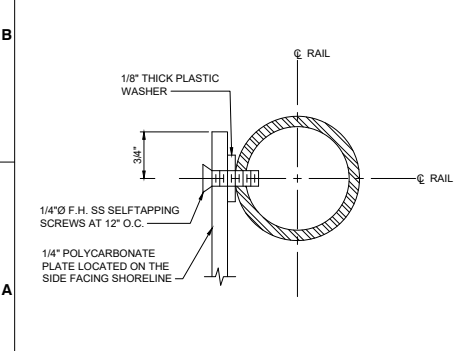
- GATE MAY BE FABRICATED OF ALUMINUM OR MILD STEEL.
- SUBMIT SHOP DRAWINGS FOR THE SECURITY GATE, SHOWING ALL MATERIALS, MEMBER SHAPES AND SIZES, DIMENSIONS, QUANTITIES, CONNECTING DETAILS, AND ACCESSORIES. SHOP DRAWINGS SHALL BE PROVIDED FOR ALL SPECIALLY FABRICATED ITEMS, AND CATALOG SHEETS FOR ALL STANDARD MANUFACTURED ITEMS. CONTRACTOR SHALL DESIGN ALL CONNECTIONS.
- ALL ALUMINUM USED IN THE FABRICATION SHALL BE ALLOY 6061-T6 OR 6063-T6. ALL WELDING OF ALUMINUM SHALL COMPLY WITH ALUMINUM ASSOCIATION SPECIFICATIONS FOR ALUMINUM STRUCTURES.
- ALL MILD STEEL COMPONENTS SHALL CONFORM TO ASTM A 36 AND BE GALVANIZED AFTER FABRICATION IN ACCORDANCE WITH ASTM A 123. ALL WELDING OF STEEL SHALL COMPLY WITH AMERICAN WELDING SOCIETY D 1.1.
- ANY FASTENERS BETWEEN ALUMINUM COMPONENTS SHALL BE HOT-DIP GALVANIZED OR 316 STAINLESS STEEL IN ACCORDANCE WITH ASTM A 153L.
- ALL WELDS SHALL BE MADE WITH A FILLER METAL ALLOY THAT WILL PRODUCE A WELD THAT IS COMPATIBLE IN CORROSION RESISTANCE WITH THE BASE METAL.
- DRAWINGS SHOW GENERAL LAYOUT AND CONFIGURATION REQUIREMENTS, AS WELL AS TYPICAL DIMENSIONS. SPECIFIC DIMENSIONS, WHICH CONFORM TO THE SITE REQUIREMENTS AND CALIFORNIA OSHA REGULATIONS, WILL BE REQUIRED FROM THE FABRICATOR.
- SECURITY GATE HARDWARE: HINGES SHALL BE STANLEY 4-INCH BUTT HINGES, 1 1/2 PAIR OR EQUAL.
- ALL WORK SHALL CONFORM TO THE APPROVED SHOP DRAWINGS, PROJECT DRAWINGS AND THIS SPECIFICATION. CONSTRUCTION DETAILS, FINISHING DETAILS AND COLORS SHALL BE CONSISTENT THROUGHOUT. WORK SHALL BE ACCURATELY SET TO ESTABLISH LINES AND ELEVATIONS, AND SECURELY FASTENED IN PLACE. CUTTING, DRILLING AND PUNCHING SHALL PRODUCE CLEAN TRUE LINES AND SURFACES. EXPOSED SURFACES OF WORK SHALL HAVE A SMOOTH FINISH.
- WELDING: PARTS TO BE WELDED SHALL BE FREE OF DIRT, GREASE AND OTHER CONTAMINANTS, AND SHALL FIT UP PROPERLY FOR SOUND WELDING. SURFACES TO BE WELDED SHALL NOT BE CUT WITH OXYGEN, SAWING, SHEARING OR MACHINING MAY BE USED. ALL WELDING SHALL BE WITH AN INERT GAS SHIELDED ARC PROCESS. MACHINE SETTINGS SHALL BE DEVELOPED BY MAKING TEST WELDS OF THE SAME MATERIAL ALLOY AND GEOMETRY AS THE WORK PIECES AND TESTING THE SAMPLE WELDS DESTRUCTIVELY.
- WHEELS SHALL BE INSTALLED AT THE END OF EACH OPENABLE GATE AS SHOWN. WHEELS SHALL BE ALUMINUM WITH A MOLDED POLYURETHANE TREAD AND SEALED ROLLER BEARINGS. AXLE SHALL BE STAINLESS STEEL.

NOTES:

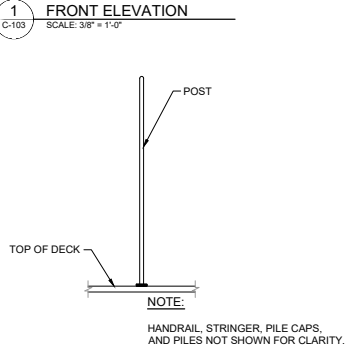
- LOCATE SECURITY GATE AT THE DECK OUTRIGGER CLOSEST TO BENT 43.
- THE LOWER FLIGHT OF STAIRS SHALL BE FRAMED TO MATCH THE EXISTING UPPER FLIGHT OF STAIRS. STEP HEIGHT SHALL MATCH EXISTING. THE MEMBER SIZED SHOWN ARE APPROXIMATE AND SHALL BE VERIFIED IN FIELD.

LEGEND:

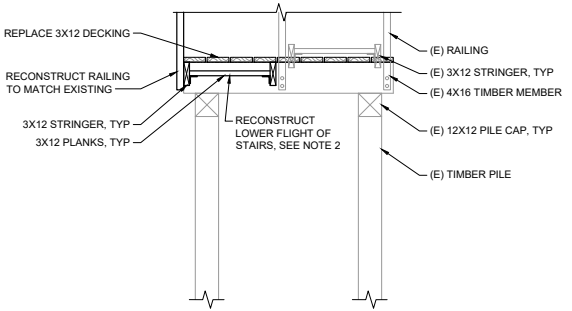
POLYCARBONATE PLATE



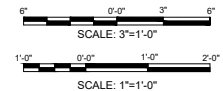
A SECTION
SCALE: 1" = 1"



2 SIDE ELEVATION
SCALE: 3/8" = 1'-0"



B STAIR SECTION
SCALE: 3/8" = 1'-0"





Rev.	Date	Description

**CAPITOLA WHARF
RESILIENCY AND PUBLIC ACCESS
IMPROVEMENT PHASE 2
WHARF RESTROOMS
1 OF 2**

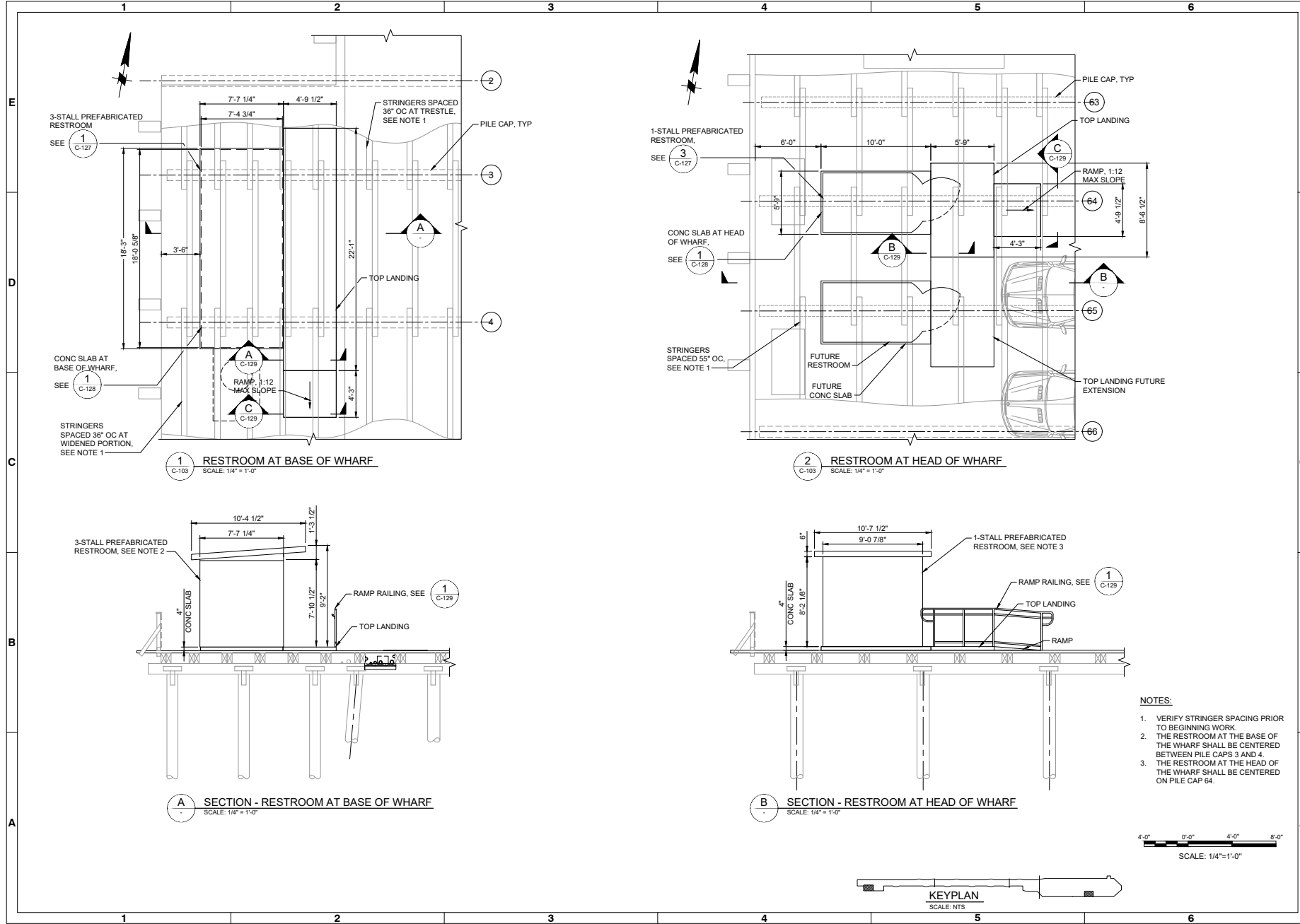
Drawn by:	JE
Checked by:	JE
Reviewed by:	MOSKATA & MICHEL
Date:	4/18/2023
MMF Project No.:	115401
Drawing scale:	1" = 10'-0"
Drawn by:	JE
Checked by:	JE
Reviewed by:	MOSKATA & MICHEL
Date:	4/18/2023
MMF Project No.:	115401
Drawing scale:	1" = 10'-0"

1555 N. CALIFORNIA BLVD. SUITE 100 WALNUT CREEK, CA 94696	
---	--



Sheet Reference No.
C-126
INDEX: 23 OF 37

File: O:\WC19154107\Capitola Wharf (Barron).CADD\Archi\Wharf_Street\SW815401-C-126 - Restroom_4/18/2023 2:27 PM By: CAPEPA, ALLISON_Sherwin_4/18/2023 4:39 PM By: JESFRADA



DRAWING SCALES SHOWN BASED ON 22"x34" DRAWING



Date	NO.

**CAPITOLA WHARF
RESILIENCY AND PUBLIC ACCESS
IMPROVEMENT PHASE 2
WHARF RESTROOMS
2 OF 2**

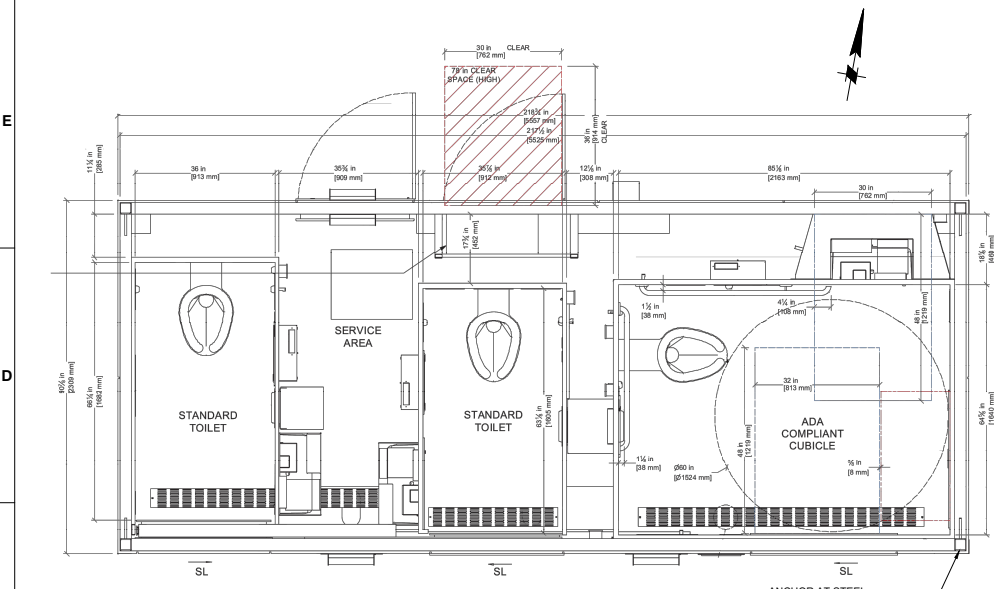
Date:	4/18/2023
Design by:	JE
Draftsman:	JE
Reviewed by:	MS/VA/TA/RS/CKL
Checked by:	MS/VA/TA/RS/CKL
Drawn scale:	
Printing scale:	
Project No.:	19-010
Sheet No.:	2 OF 2

3155A CALIFORNIA BLVD. SUITE 210 WALNUT CREEK, CA 94596	 Madden Construction
---	--------------------------------



Sheet
Reference No.
C-127
INDEX: 24 OF 37

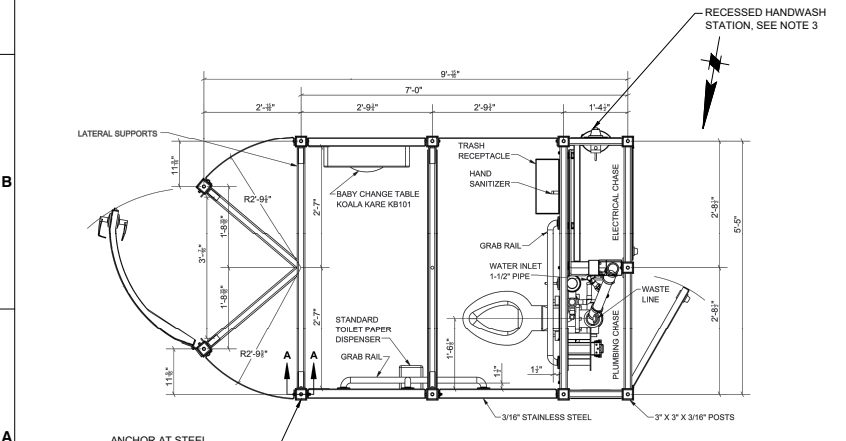
1 2 3 4 5 6



1 3-STALL PREFABRICATED RESTROOM PLAN
SCALE: 3/4" = 1'-0"
ANCHOR AT STEEL POSTS
SEE **2** C-128



2 3-STALL PREFABRICATED RESTROOM
SCALE: NTS



3 1-STALL PREFABRICATED RESTROOM PLAN
SCALE: 3/4" = 1'-0"
RECESSED HANDWASH STATION, SEE NOTE 3
ANCHOR AT STEEL POSTS
SEE **3** C-128



4 1-STALL PREFABRICATED RESTROOM
SCALE: NTS

- NOTES:**
- MODEL SHOWN FOR THE PREFABRICATED RESTROOM - 3 STALLS IS THE JUPITER TRIPLE BY EXELOO, OR APPROVED EQUAL.
 - MODEL SHOWN FOR THE PREFABRICATED RESTROOM - 1 STALL IS THE 316 SS PORTLAND LOO BY MADDEN FABRICATION OR APPROVED EQUAL.
 - RECESSED HANDWASH STATION SHOULD BE LOCATED ON THE SIDE FACING THE BOAT & BAIT SHOP. ENSURE THAT THE STATION IS ACCESSIBLE PER CBC GUIDELINES.

