



Jade Street Park Universally Accessible Playground Project Conceptual Design

City Council

June 8, 2023

Playground Replacement



Jade Street Park Universally Accessible Playground

Council Presentation No 1
June 8, 2023

Presentation Points

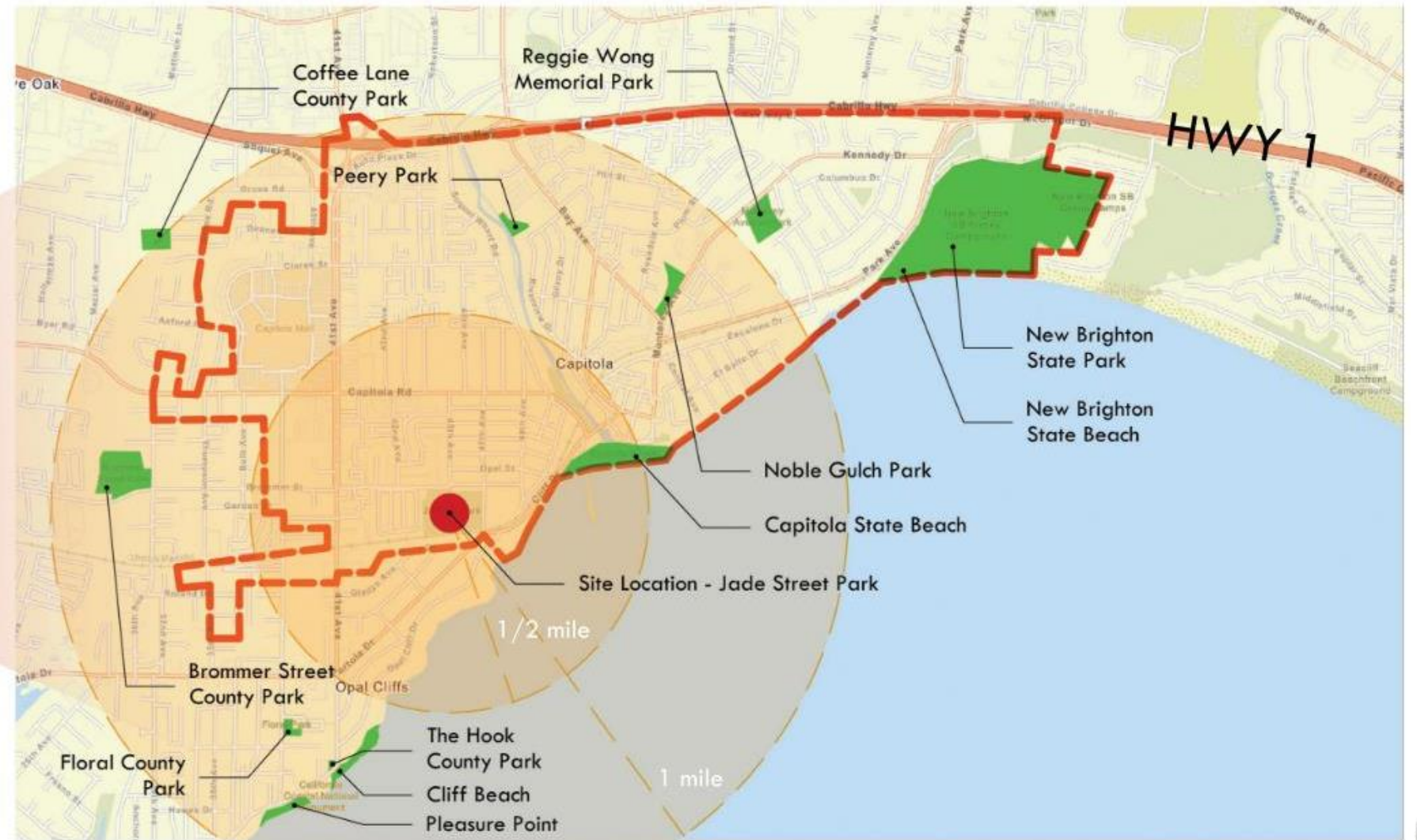
- **Project Introduction**
- **Project Schedule**
- **Public Outreach**
 - Community Feedback
 - Workshops – Pop Up - Survey
- **Reach Concept**
 - Play Zones
- **Park Features**
 - Theme
 - Materials



Project Introduction

■ Project purpose to develop universally accessible (UA) playground at Jade Street Park. Project will replace and expand existing and outdated playground that was installed in 1999 and 2007.

■ Project construction is not yet funded. The City is coordinating a fund-raising plan in conjunction with approval of a preferred concept.



Universal Access

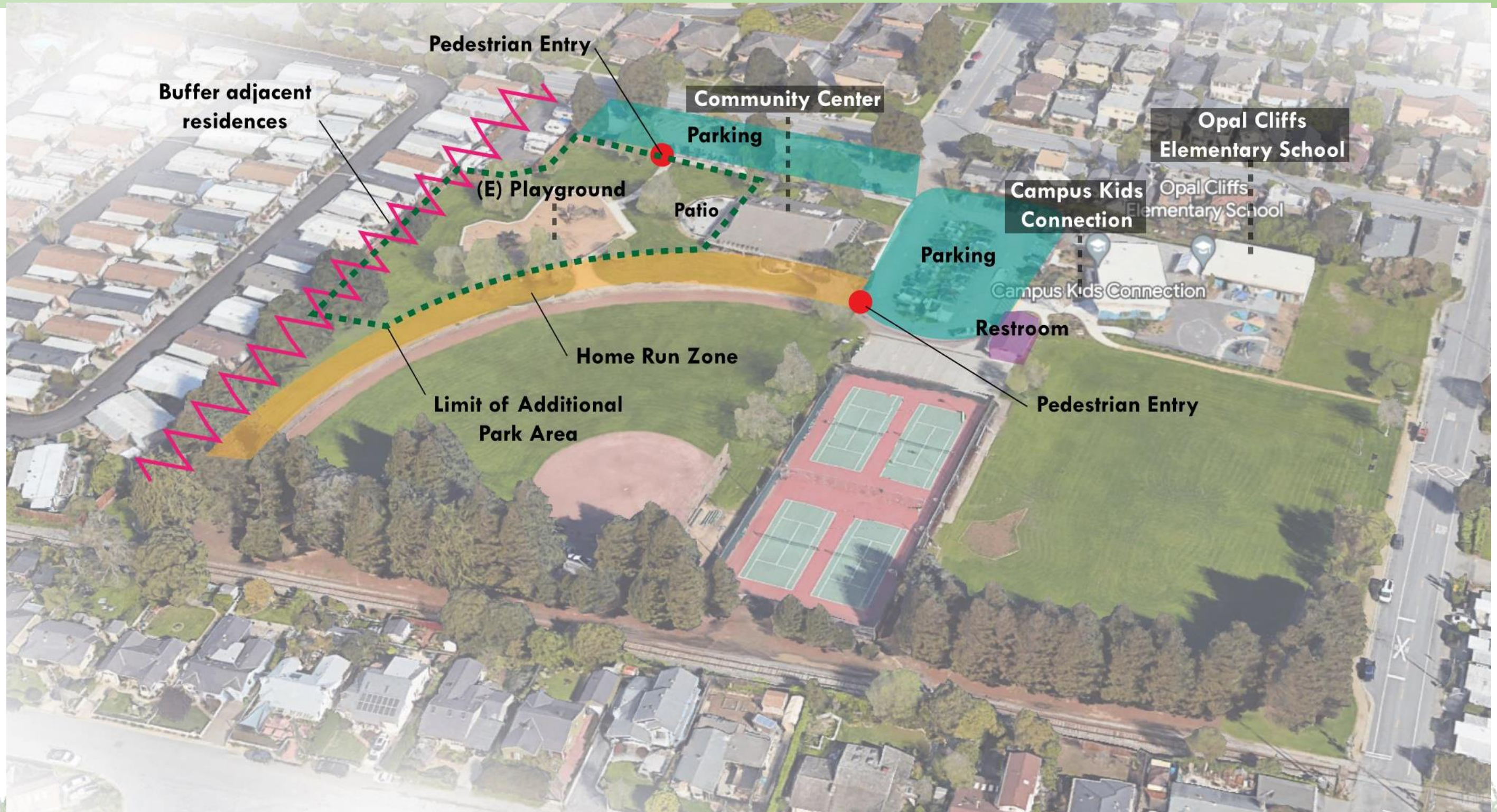
Universally accessible: What does it mean?

Goal: to promote health and wellness in communities by providing the freedom of play for children and families of all abilities to play side-by-side.

- Play is a critical part of the social, emotional, cognitive, and physical development of every child.
- Playgrounds not only allow children with disabilities the right to play, but also parents and caregivers, and seniors.
- Provides multiple forms of play
- Range of risks
- Range of sensory engagement



Site Analysis



Jade Street Park – Universally Accessible Playground

How We Got To This Point

- **Community Outreach**

- Community Workshop No. 1
 - Pop Up at the Park No. 1
- Community Workshop No. 2
 - Pop up at the Park No. 2

Rescheduled to March 28 due to weather
March 25th

April 25th
April 29th

- **Preferred Concept Design**

- City Council Presentation

June 8, 2023 TODAY



Community Input...Listening



First Pop-Up event held on Saturday in the park – March 25

Sign-in participants: **21** Total estimated Participants: **35**

First Survey closed April 5th

Total Participants: **27**

What we heard:

Top features: Play Events

Climbing/Sliding & Imagination Play

Top features: Social Events

Sensory Garden & Seating

Theme of comments:

Art murals Seating Pathways Native pond More plants
Pickle ball Wildlife Outdoor stage Dog walk/trail



Jade Street Park – Universally Accessible Playground

Pop Up...Listening

Play Features

Swing Zone



Select 3 that inspire you.

Motion Zone



Select 3 that inspire you.

Site Plan



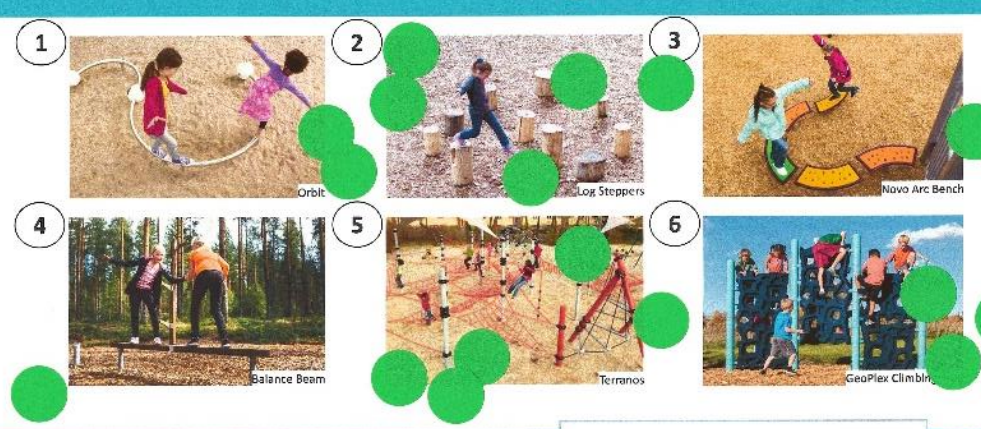
Existing Conditions

Climbing Sliding Zone



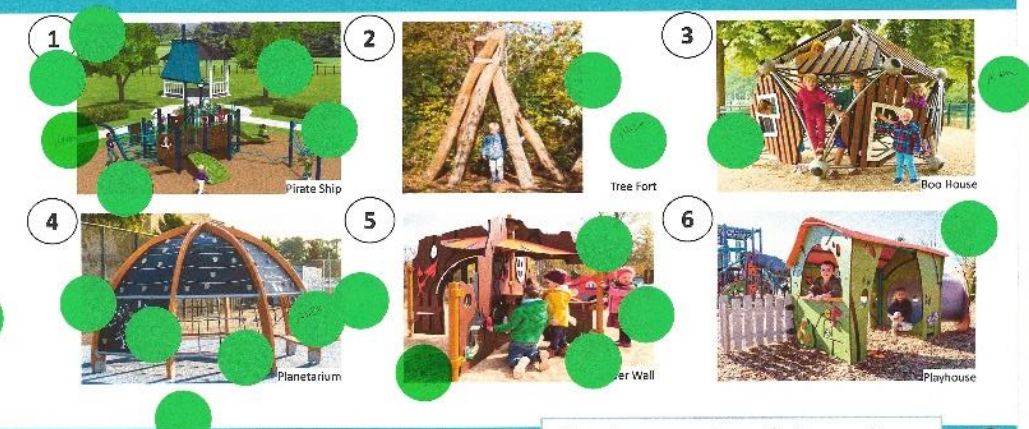
Select 3 that inspire you.

Balance & Strength Zone



Select 3 that inspire you.

Imagination Play

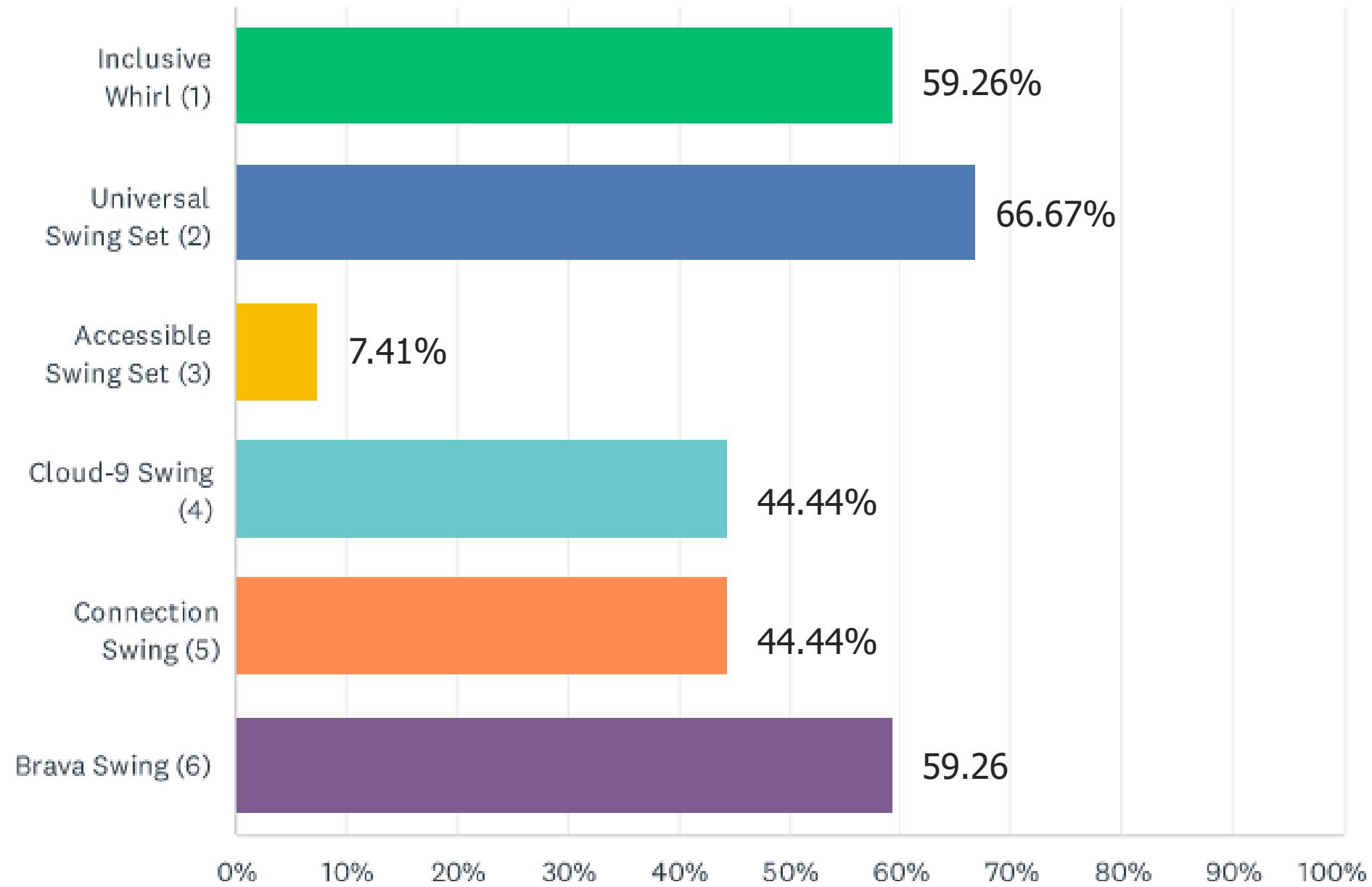


Rank your top 3 favorites.
#1 being the top.



Community Input Survey Results

Swing Zone



Universal Swing Set



Inclusive Whirl

Community Input Design Development



2nd Community Meeting was held on April 25th
Pop-Up event held on Saturday in the park – April 29th

Sign-in participants: **12** Total estimated Participants: **36**

Survey closed May 3rd

Participants: **43**

What we heard:

Main Topics:

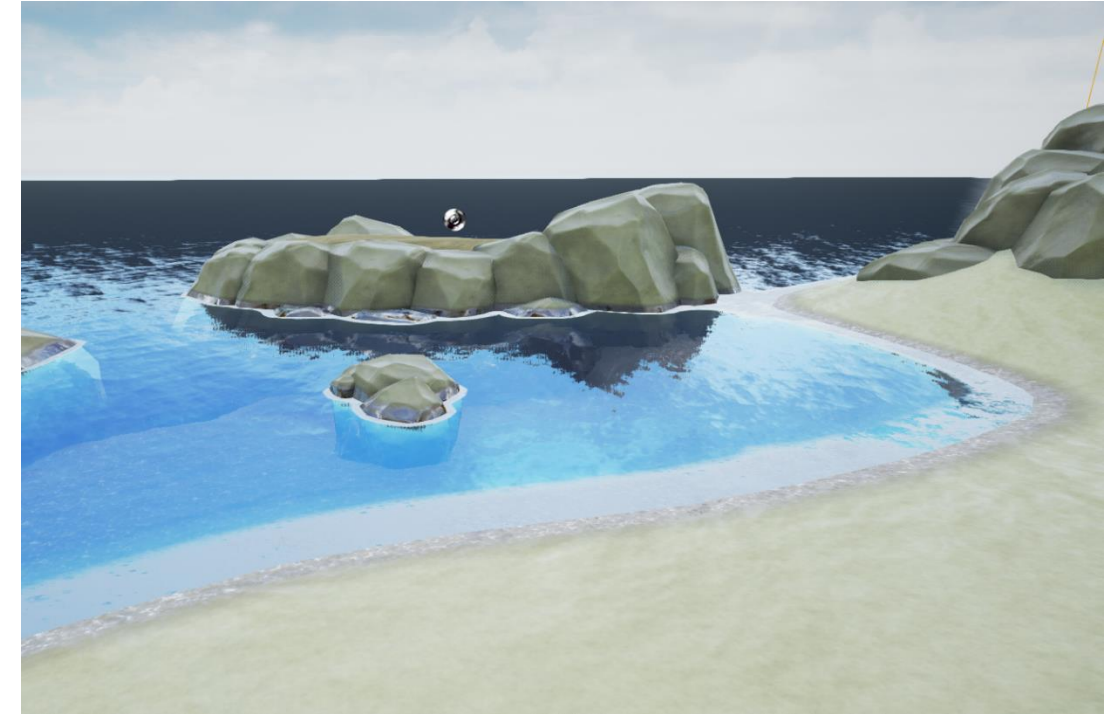
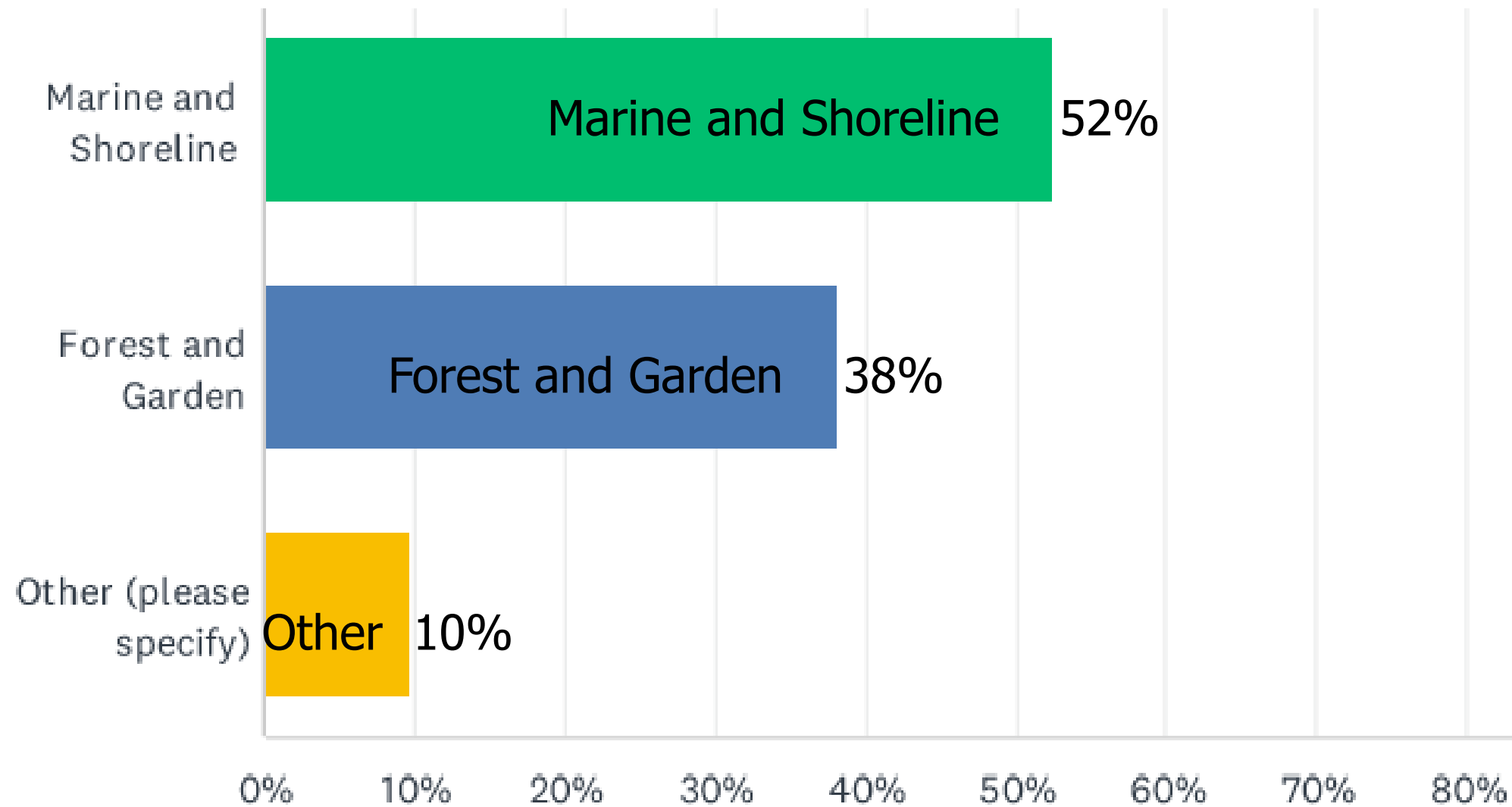
Seating	25 mentions
Picnic	22 mentions
Access	17 mentions
Pollinator Path	15 Mentions
Sensory Garden	11 mentions



Jade Street Park – Universally Accessible Playground

Community Input Summary

Theme analysis: 47 participants



Reach Concept



CONCEPT LEGEND

- ① EXISTING PARKING LOT
- ② ENTRY MONUMENT
- ③ GROUP PICNIC TABLE (2)
- ④ TRASH CONTAINERS
- ⑤ FENCING - 48" TALL
- ⑥ SEATING PAD
- ⑦ SLOPED WALKWAY
- ⑧ GAME TABLE (2)
- ⑨ PICNIC TABLE - 4 SEATS (3)
- ⑩ BANNER POLE (3)
- ⑪ INSECT HOUSE
- ⑫ EDUCATIONAL SIGN
- ⑬ DRINKING FOUNTAIN
- ⑭ BENCH (4)
- ⑮ TRIKE TRACK

SURFACE LEGEND

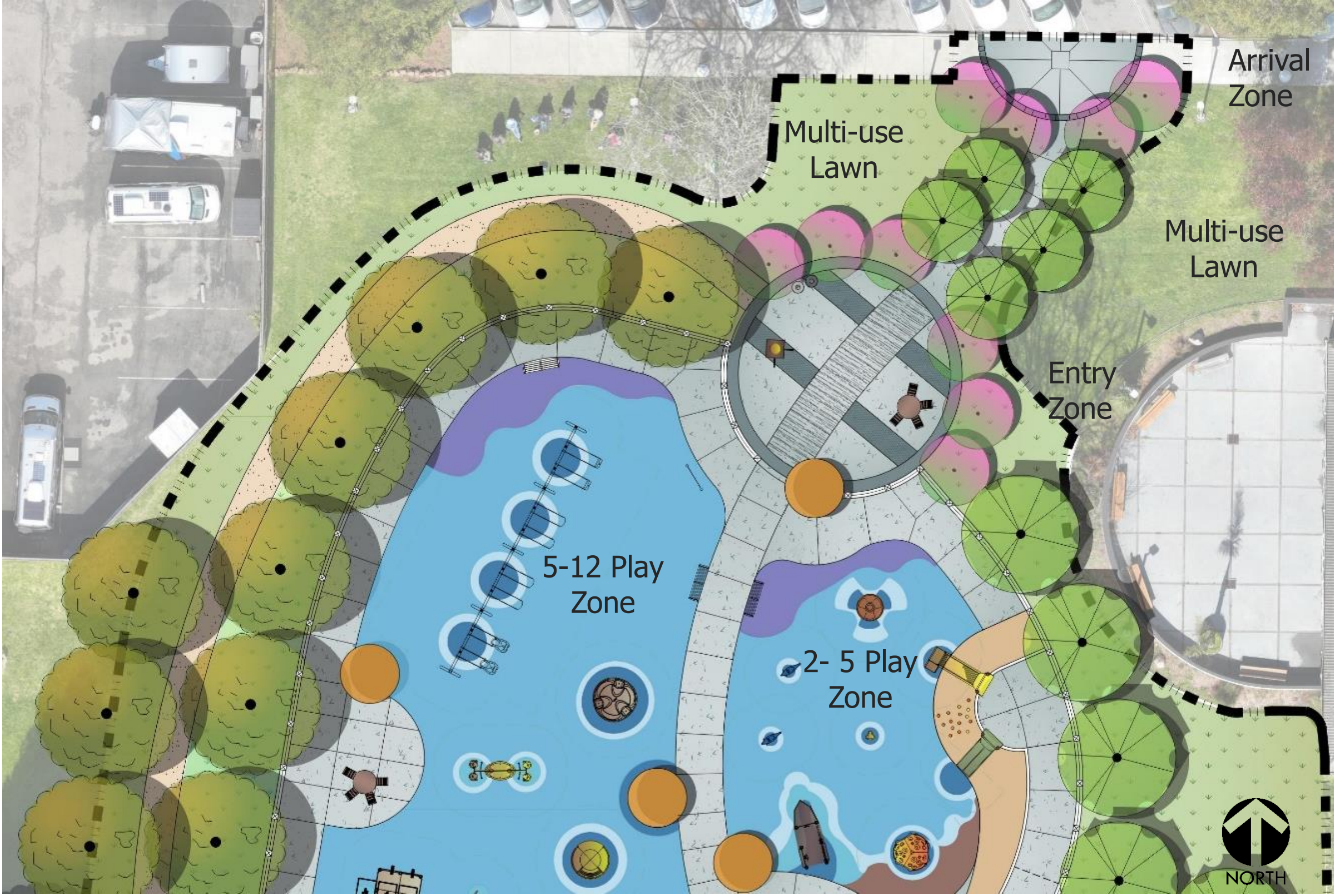
-  GRAY CONCRETE PAVING
-  STAMPED CONCRETE PAVING
-  RUBBER RESILIENT SURFACE
-  DECOMPOSED GRANITE
-  SOD
-  RAIN GARDEN PLANTING
-  CALIFORNIA MEADOW - NATIVE HYDROSEED
-  SENSORY PLANTING

PLAY EQUIPMENT

- Ⓐ 4-BAY SWING
- Ⓑ VOLTA SPINNER
- Ⓒ 4-SEATS ROCKER
- Ⓓ ROLLER TABLE
- Ⓔ 5-12 COMPOSITE PLAY STRUCTURE
- Ⓕ INCLUSIVE WHIRL
- Ⓖ ADA CYCLONE SPINNER
- Ⓗ BOOGIE BOARD
- Ⓘ REVIROCK BOUNCER
- Ⓙ WHIMSY RIDER DOLPHIN (2)
- Ⓚ SPINNER
- Ⓛ PLAY SHIP
- Ⓜ COZY DOME
- Ⓝ SMALL EMBANKMENT SLIDE (2)
- Ⓞ PERCUSSION CAJON BOX (2)
- Ⓟ SANSA RIMBA
- Ⓠ KINDERBELLS
- Ⓡ NOVO TEARDROP COUNTER
- Ⓢ LOOP CLIMBERS (3)
- Ⓣ ROCK CLIMBERS
- Ⓤ COMMUNICATION BOARD



Reach Concept - Arrival and Entry



Reach Concept – 5-12 Play Zone



Reach Concept – 5-12 Play Zone



Jade St. Park

1174169-01-02-04 • 06.08.2023



Play Features 5-12 Play Zone



Jade Street Park – Universally Accessible Playground

Play Features – 5-12 Play Zone

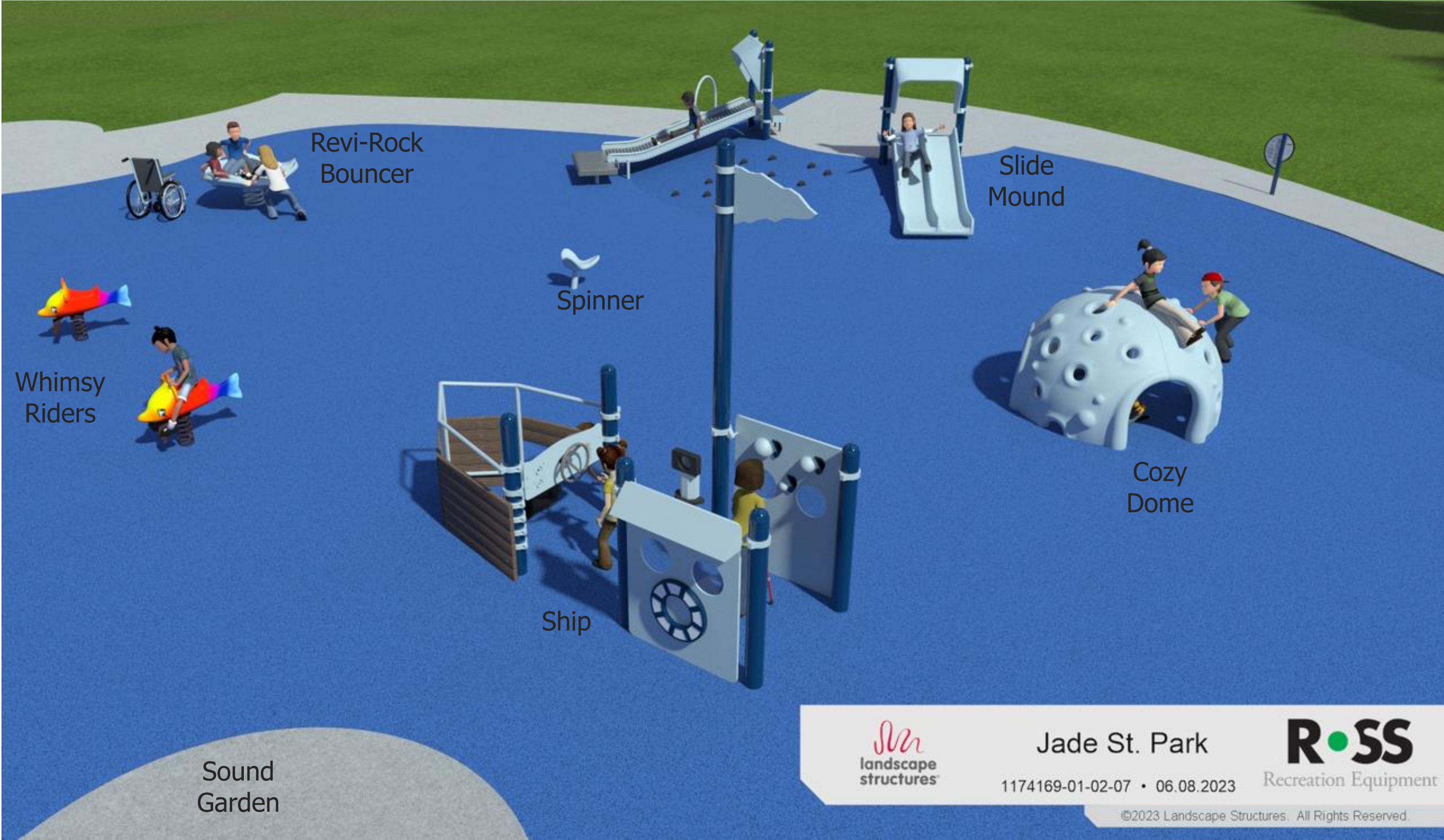


Jade Street Park – Universally Accessible Playground

Reach Concept – 2-5 Play Zone



Reach Concept – 2-5 Play Zone

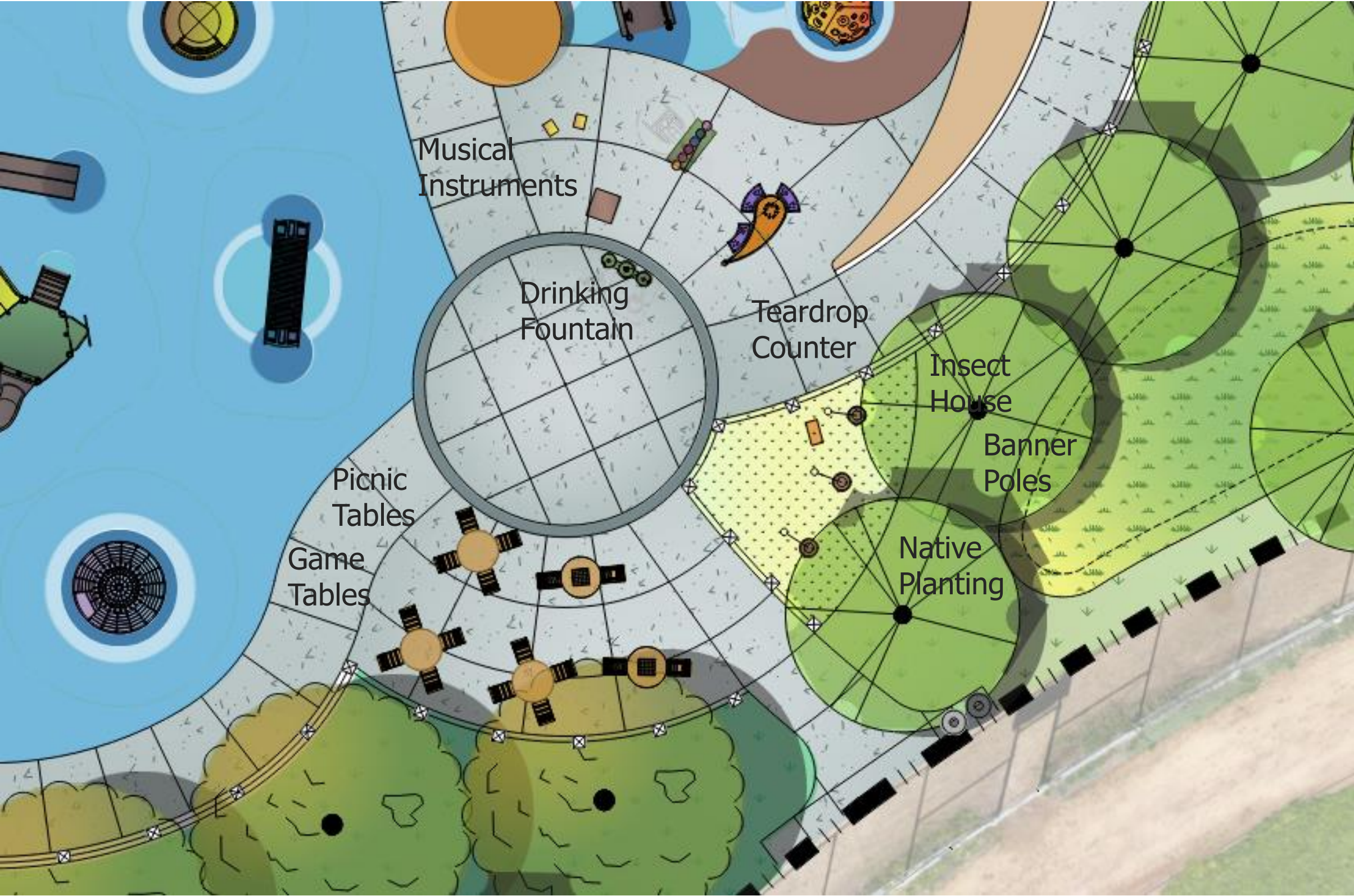


Play Features – 2-5 Play Zone



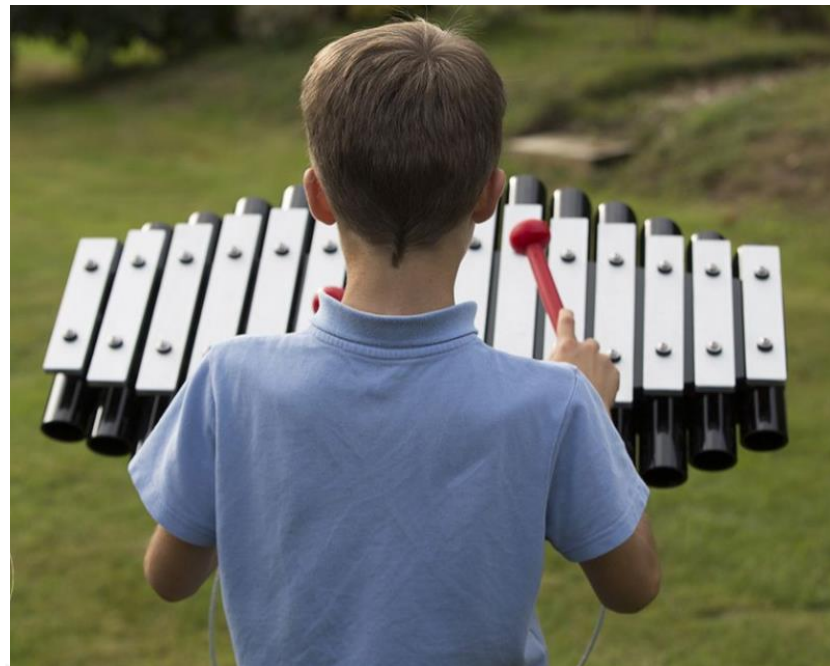
Jade Street Park – Universally Accessible Playground

Reach Concept – Music and South Plaza



Concept B

Sensory + Sound Garden

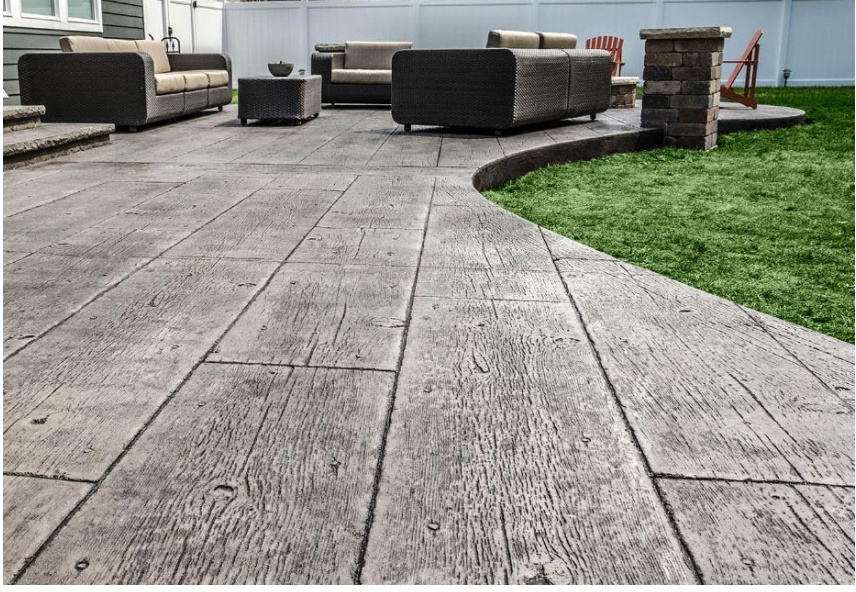
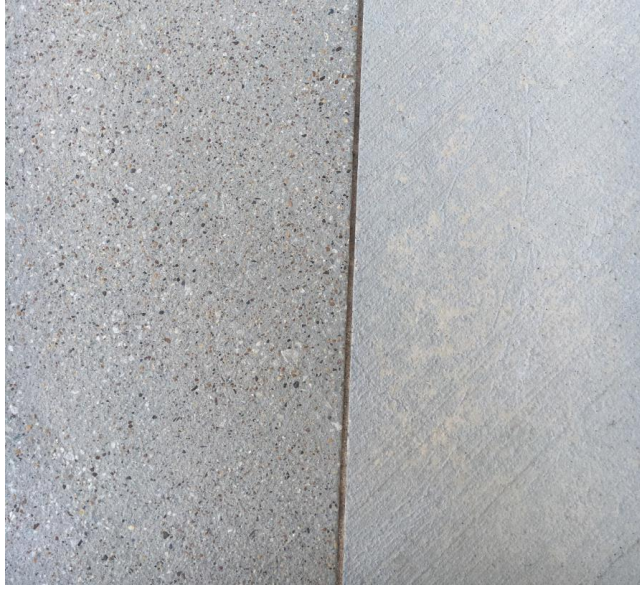


Pollinator Garden + Planting



Jade Street Park – Universally Accessible Playground

Paving + Materials



Jade Street Park – Universally Accessible Playground

Seating & Social Spaces





VERDE DESIGN



Jade Street Park – Universally Accessible Playground

UA Playground Conceptual Design

Funding and Cost Estimate



Allocation	
FY22/23	\$275k
FY23/24	\$200k
Fundraising	\$850k
Total Allocation	\$1.325M
“Reach Design” Estimated Cost	
Design	\$177k
Construction	\$1.5M
Soft Costs	\$425k
Total Project Costs	\$2.077M
Shortfall	\$752k



Recommendation

- Direct staff to prepare final concept plan that:
- Meets projected available funding
 - Includes opportunities to enhance design if additional funding is obtained

Thank You!



Jade Street Park – Universally Accessible Playground

Design Concepts



Concept A



Concept B

Design Concepts



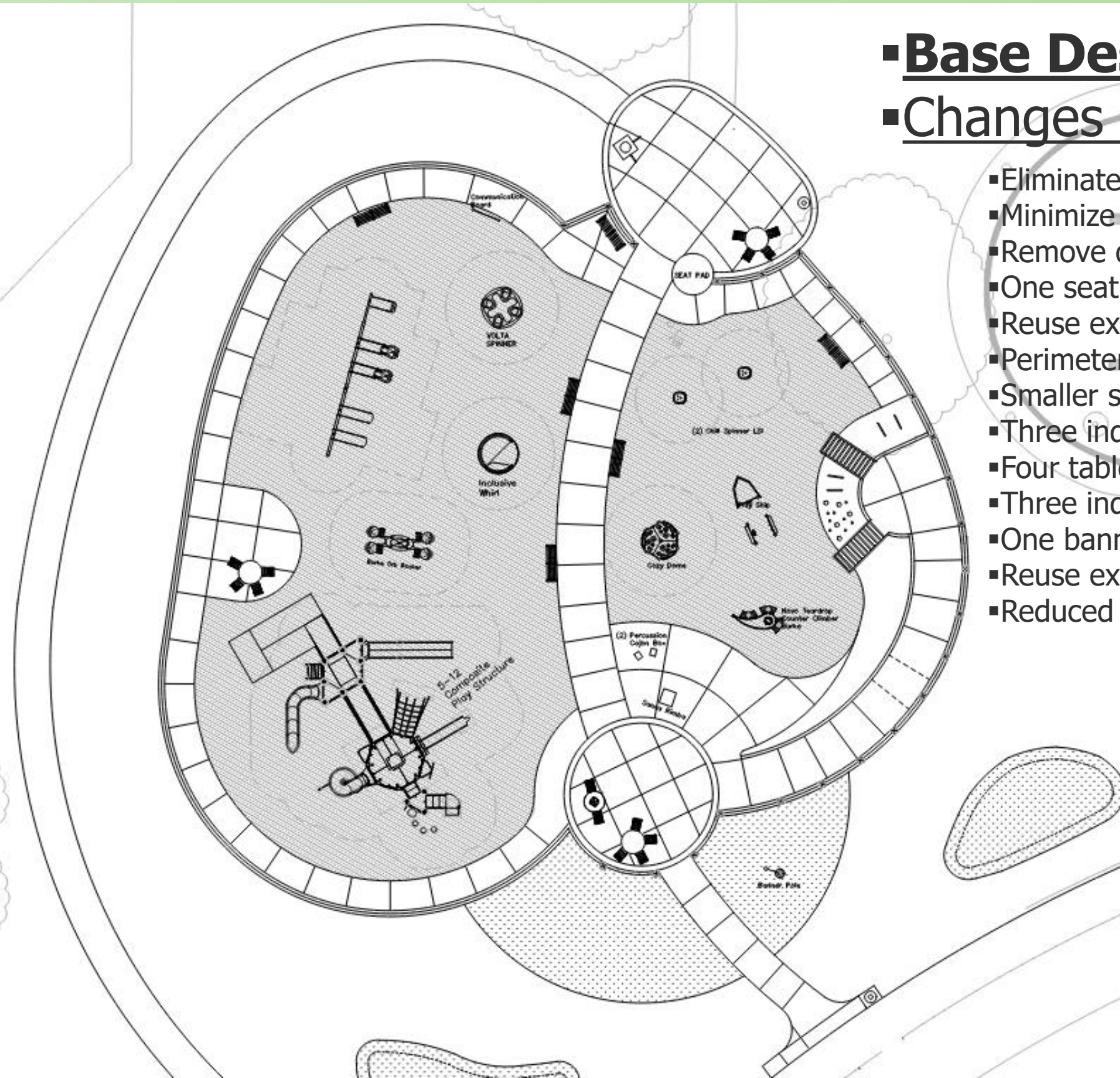
Reach Concept

Design Concepts

▪ Base Design - Value

▪ Changes from reach concept:

- Eliminate new entry node at parking lot and reuse existing walk to play area.
- Minimize arrival plaza
- Remove drinking fountain from play area.
- One seat pad (reduced from 4)
- Reuse existing (2) waste receptacles
- Perimeter walks reduced from 8' to 5' wide.
- Smaller swing with only 5 seats (reduced from 8)
- Three independent play components at 5-12 play area (reduced from 6)
- Four tables (reduced from 7)
- Three independent play components at 2-5 play area (reduced from 5)
- One banner pole (reduced from 3)
- Reuse existing benches (6 total)
- Reduced storm water treatment areas



Value Concept

Preliminary Cost Analysis



▪ Reach Concept

▪ Construction Budget \$1,880,666

▪ Site Prep.	\$64,150
▪ Grading and Earthwork	\$70,800
▪ Drainage and Utilities	\$88,984
▪ Hardscape	\$456,266
▪ Gateway and Fencing	\$97,120
▪ Site Furnishing	\$58,670
▪ Play Equipment	\$492,341
▪ Irrigation and Planting	\$129,561
▪ Overhead and General Conditions	\$422,785

Reach Concept