

STATE OF CALIFORNIA - DEPARTMENT OF TRANSPORTATION  
**Caltrans**  
 CONSULTANT FUNCTIONAL SUPERVISOR: ERIC SMITH  
 CHECKED BY: CHRISTINE ANDERSON  
 DESIGNED BY: BRENDAN ORE  
 REVISIONS: REVISOR: DATE  
 REVISOR: DATE

**NOTE:**  
 FOR ACCURATE RIGHT OF WAY DATA, CONTACT RIGHT OF WAY ENGINEERING AT THE DISTRICT OFFICE.

DIST	COUNTY	ROUTE	POST MILES TOTAL PROJECT	SHEET No.	TOTAL SHEETS
05	SCR	1	10.5/13.4		620

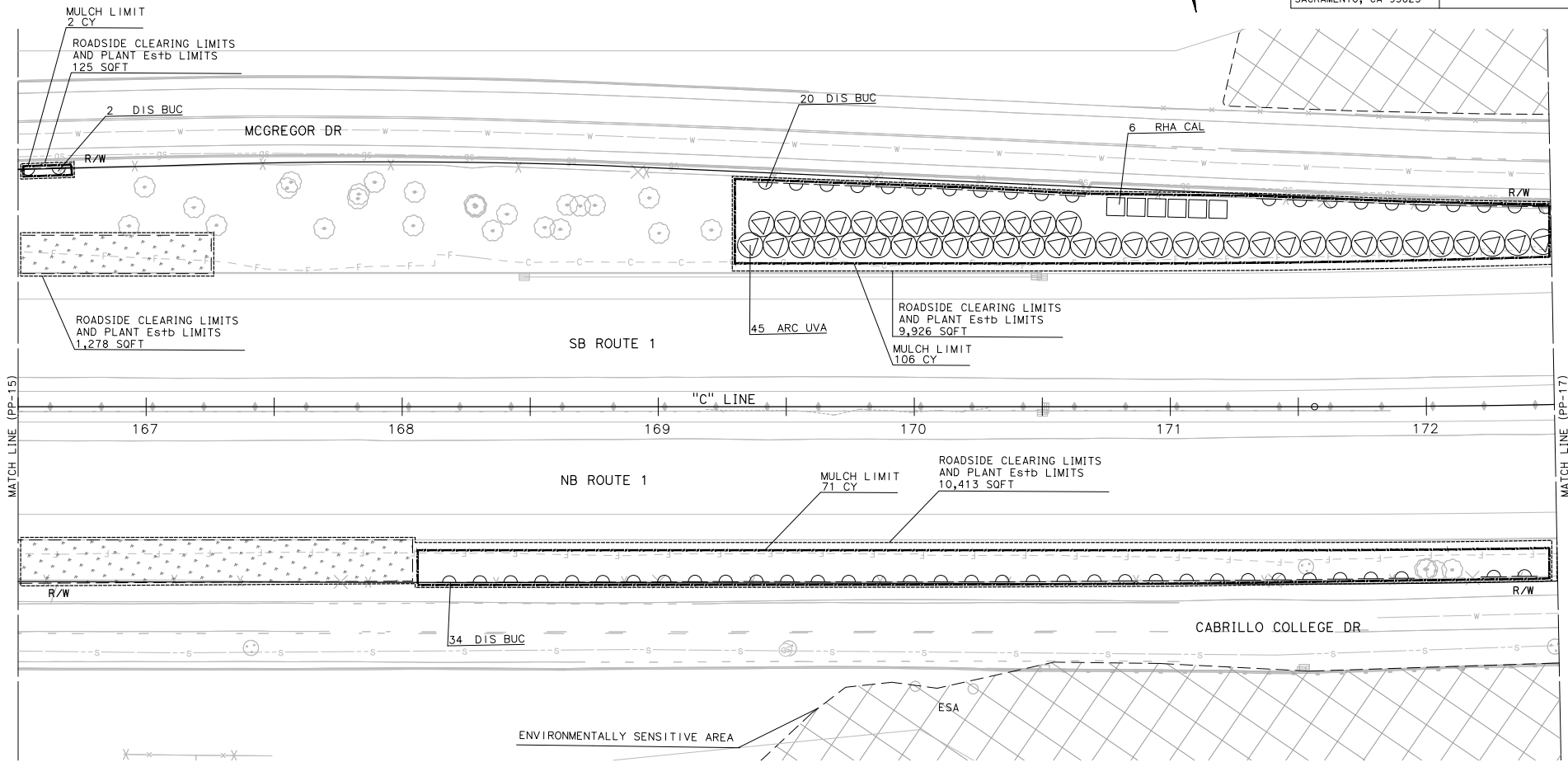
**100% DRAFT**  
 LICENSED LANDSCAPE ARCHITECT DATE

PLANS APPROVAL DATE

THE STATE OF CALIFORNIA OR ITS OFFICERS OR AGENTS SHALL NOT BE RESPONSIBLE FOR THE ACCURACY OR COMPLETENESS OF SCANNED COPIES OF THIS PLAN SHEET.

MARK THOMAS  
 701 UNIVERSITY AVENUE  
 SUITE 200  
 SACRAMENTO, CA 95825

SANTA CRUZ COUNTY REGIONAL TRANSPORTATION COMMISSION  
 1523 PACIFIC AVENUE  
 SANTA CRUZ, CA 95060



APPROVED FOR PLANTING WORK ONLY

**PLANTING PLAN**  
 SCALE: 1" = 20'  
**PP-16**

LAST REVISION: DATE PLOTTED => 4-MAR-22 00-00-00 TIME PLOTTED => 13:46

STATE OF CALIFORNIA - DEPARTMENT OF TRANSPORTATION CONSULTANT FUNCTIONAL SUPERVISOR  
 BRENDAN ORE  
 CHECKED BY  
 CHRISTINE ANDERSON  
 REVISOR  
 DATE REVISOR  
 ERIC SMITH

**NOTE:**  
 FOR ACCURATE RIGHT OF WAY DATA, CONTACT RIGHT OF WAY ENGINEERING AT THE DISTRICT OFFICE.

Dist	COUNTY	ROUTE	POST MILES TOTAL PROJECT	SHEET No.	TOTAL SHEETS
05	Scr	1	10.5/13.4		620

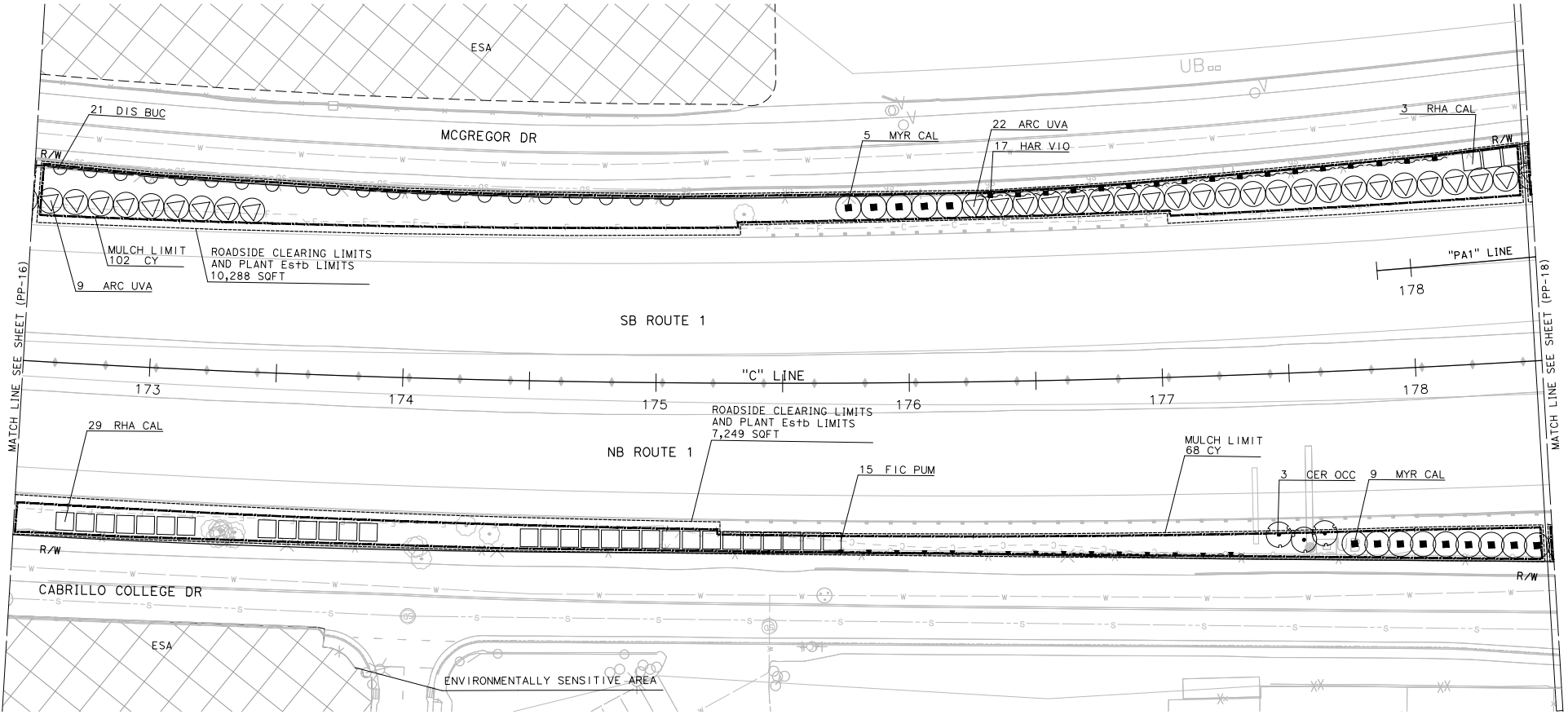
**100% DRAFT**  
 LICENSED LANDSCAPE ARCHITECT DATE

PLANS APPROVAL DATE

THE STATE OF CALIFORNIA OR ITS OFFICERS OR AGENTS SHALL NOT BE RESPONSIBLE FOR THE ACCURACY OR COMPLETENESS OF SCANNED COPIES OF THIS PLAN SHEET.

MARK THOMAS  
 701 UNIVERSITY AVENUE  
 SUITE 200  
 SACRAMENTO, CA 95825

SANTA CRUZ COUNTY REGIONAL TRANSPORTATION COMMISSION  
 1523 PACIFIC AVENUE  
 SANTA CRUZ, CA 95060



APPROVED FOR PLANTING WORK ONLY

**PLANTING PLAN**  
 SCALE: 1" = 20'  
**PP-17**

LAST REVISION DATE PLOTTED => 4-Apr-22 10:00:00 TIME PLOTTED => 13:46

STATE OF CALIFORNIA - DEPARTMENT OF TRANSPORTATION - CONSULTANT FUNCTIONAL SUPERVISOR  
 BRENDAN ORE  
 CHRISTINE ANDERSON  
 ERIC SMITH

**NOTE:**  
 FOR ACCURATE RIGHT OF WAY DATA, CONTACT RIGHT OF WAY ENGINEERING AT THE DISTRICT OFFICE.

DIST	COUNTY	ROUTE	POST MILES TOTAL PROJECT	SHEET No.	TOTAL SHEETS
05	SCR	1	10.5/13.4		620

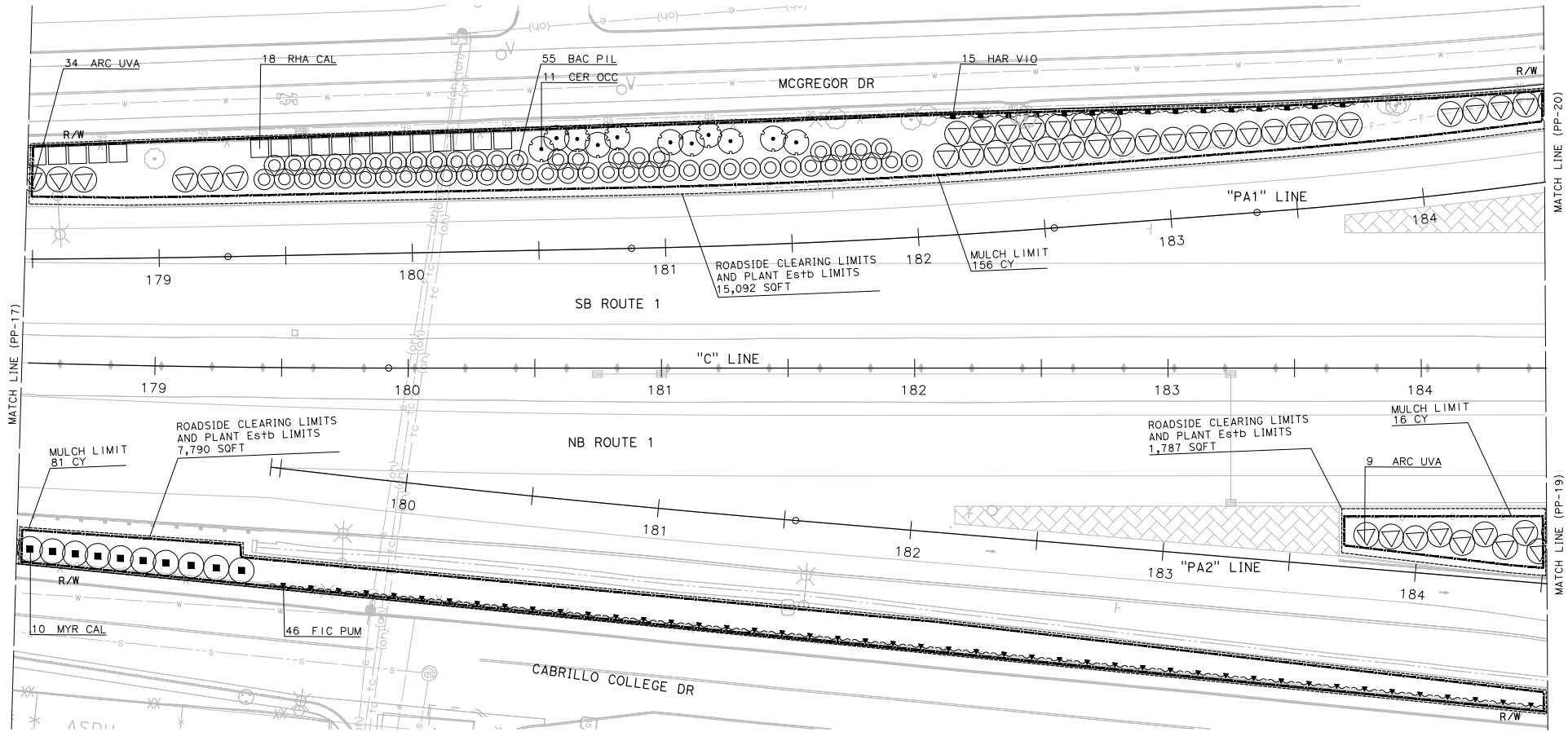
**100% DRAFT**  
 LICENSED LANDSCAPE ARCHITECT DATE

PLANS APPROVAL DATE

THE STATE OF CALIFORNIA OR ITS OFFICERS OR AGENTS SHALL NOT BE RESPONSIBLE FOR THE ACCURACY OR COMPLETENESS OF SCANNED COPIES OF THIS PLAN SHEET.

MARK THOMAS  
 701 UNIVERSITY AVENUE  
 SUITE 200  
 SACRAMENTO, CA 95825

SANTA CRUZ COUNTY REGIONAL TRANSPORTATION COMMISSION  
 1523 PACIFIC AVENUE  
 SANTA CRUZ, CA 95060



APPROVED FOR PLANTING WORK ONLY

**PLANTING PLAN**  
 SCALE: 1" = 20'  
**PP-18**


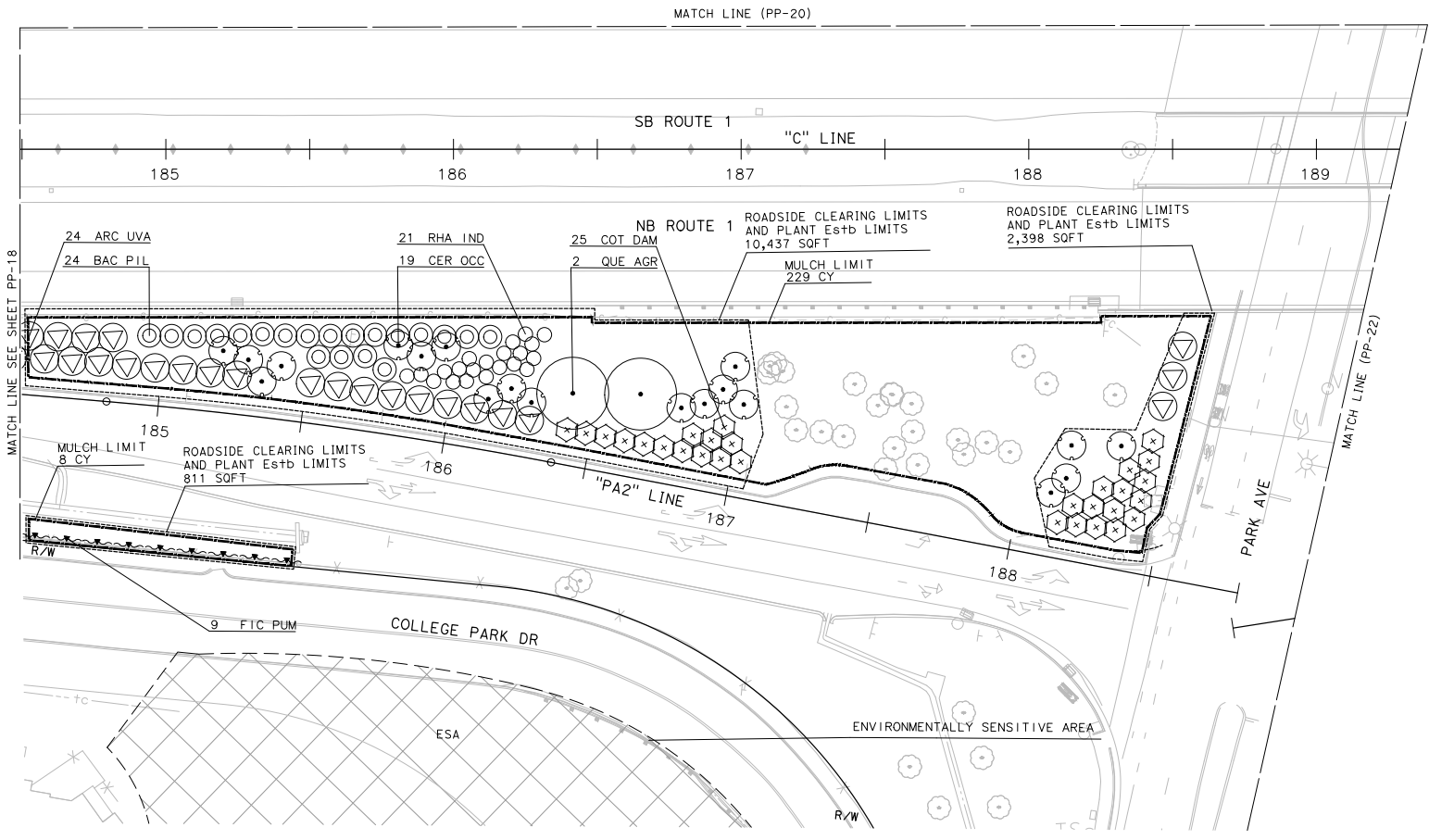
LAST REVISION DATE PLOTTED => 4-MAR-22  
 00-00-00 TIME PLOTTED => 13:47

STATE OF CALIFORNIA - DEPARTMENT OF TRANSPORTATION  
**Caltrans**  
 CONSULTANT SUPERVISOR: ERIC SMITH  
 CHECKED BY: CHRISTINE ANDERSON  
 DESIGNED BY: BRENDAN ORE  
 REVISIONS: REVISOR: DATE

**NOTE:**  
 FOR ACCURATE RIGHT OF WAY DATA, CONTACT RIGHT OF WAY ENGINEERING AT THE DISTRICT OFFICE.

DIST	COUNTY	ROUTE	POST MILES TOTAL PROJECT	SHEET No.	TOTAL SHEETS
05	SCR	1	10.5/13.4		620

**100% DRAFT**  
 LICENSED LANDSCAPE ARCHITECT DATE \_\_\_\_\_  
 PLANS APPROVAL DATE \_\_\_\_\_  
 THE STATE OF CALIFORNIA OR ITS OFFICERS OR AGENTS SHALL NOT BE RESPONSIBLE FOR THE ACCURACY OR COMPLETENESS OF SCANNED COPIES OF THIS PLAN SHEET.  
 MARK THOMAS  
 701 UNIVERSITY AVENUE  
 SUITE 200  
 SACRAMENTO, CA 95825  
 SANTA CRUZ COUNTY REGIONAL TRANSPORTATION COMMISSION  
 1523 PACIFIC AVENUE  
 SANTA CRUZ, CA 95060

APPROVED FOR PLANTING WORK ONLY

**PLANTING PLAN**  
 SCALE: 1" = 20'  
**PP-19**

LAST REVISION: DATE PLOTTED => 4-Nov-22  
 00-00-00 TIME PLOTTED => 13:48

STATE OF CALIFORNIA - DEPARTMENT OF TRANSPORTATION  
**Caltrans**

CONSULTANT FUNCTIONAL SUPERVISOR  
 ERIK SMITH

CALCULATED-DESIGNED BY  
 CHECKED BY

BRENDAN ORE  
 CHRISTINE ANDERSON

REVISED BY  
 DATE REVISED

**NOTE:**  
 FOR ACCURATE RIGHT OF WAY DATA, CONTACT RIGHT OF WAY ENGINEERING AT THE DISTRICT OFFICE.

DIST	COUNTY	ROUTE	POST MILES TOTAL PROJECT	SHEET No.	TOTAL SHEETS
05	Scr	1	10.5/13.4		620

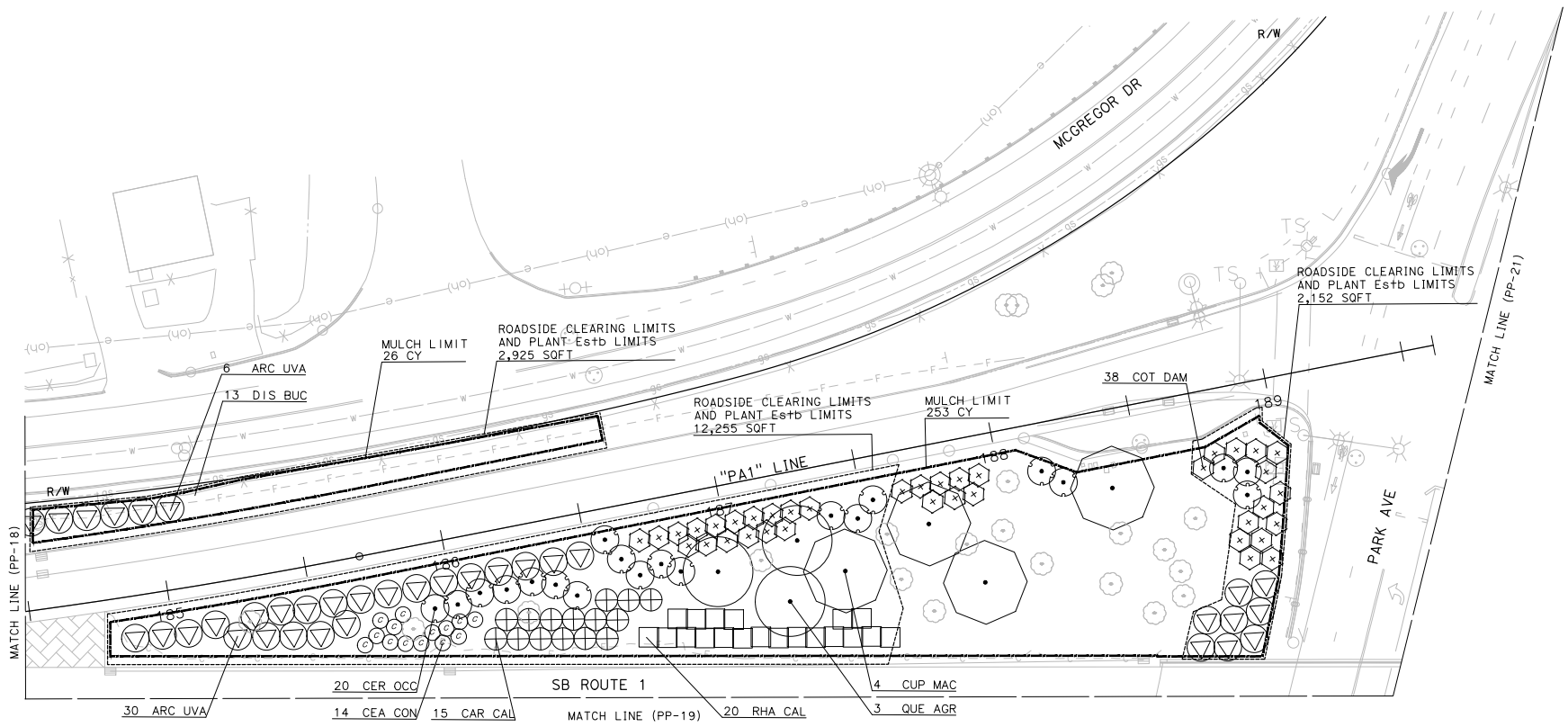
**100% DRAFT**  
 LICENSED LANDSCAPE ARCHITECT DATE

PLANS APPROVAL DATE

THE STATE OF CALIFORNIA OR ITS OFFICERS OR AGENTS SHALL NOT BE RESPONSIBLE FOR THE ACCURACY OR COMPLETENESS OF SCANNED COPIES OF THIS PLAN SHEET.

MARK THOMAS  
 701 UNIVERSITY AVENUE  
 SUITE 200  
 SACRAMENTO, CA 95825

SANTA CRUZ COUNTY REGIONAL TRANSPORTATION COMMISSION  
 1523 PACIFIC AVENUE  
 SANTA CRUZ, CA 95060



APPROVED FOR PLANTING WORK ONLY

**PLANTING PLAN**  
 SCALE: 1" = 20'  
**PP-20**

LAST REVISION: DATE PLOTTED => 4-Apr-22 | 00-00-00 TIME PLOTTED => 13:49

STATE OF CALIFORNIA - DEPARTMENT OF TRANSPORTATION  
**Caltrans**  
 CONSULTANT FUNCTIONAL SUPERVISOR: ERIK SMITH  
 CALCULATED-DESIGNED BY: BRENDAN ORE  
 CHECKED BY: CHRISTINE ANDERSON  
 REVISOR: [REVISOR NAME]  
 DATE REVISOR: [REVISOR DATE]

**NOTE:**  
 FOR ACCURATE RIGHT OF WAY DATA, CONTACT RIGHT OF WAY ENGINEERING AT THE DISTRICT OFFICE.

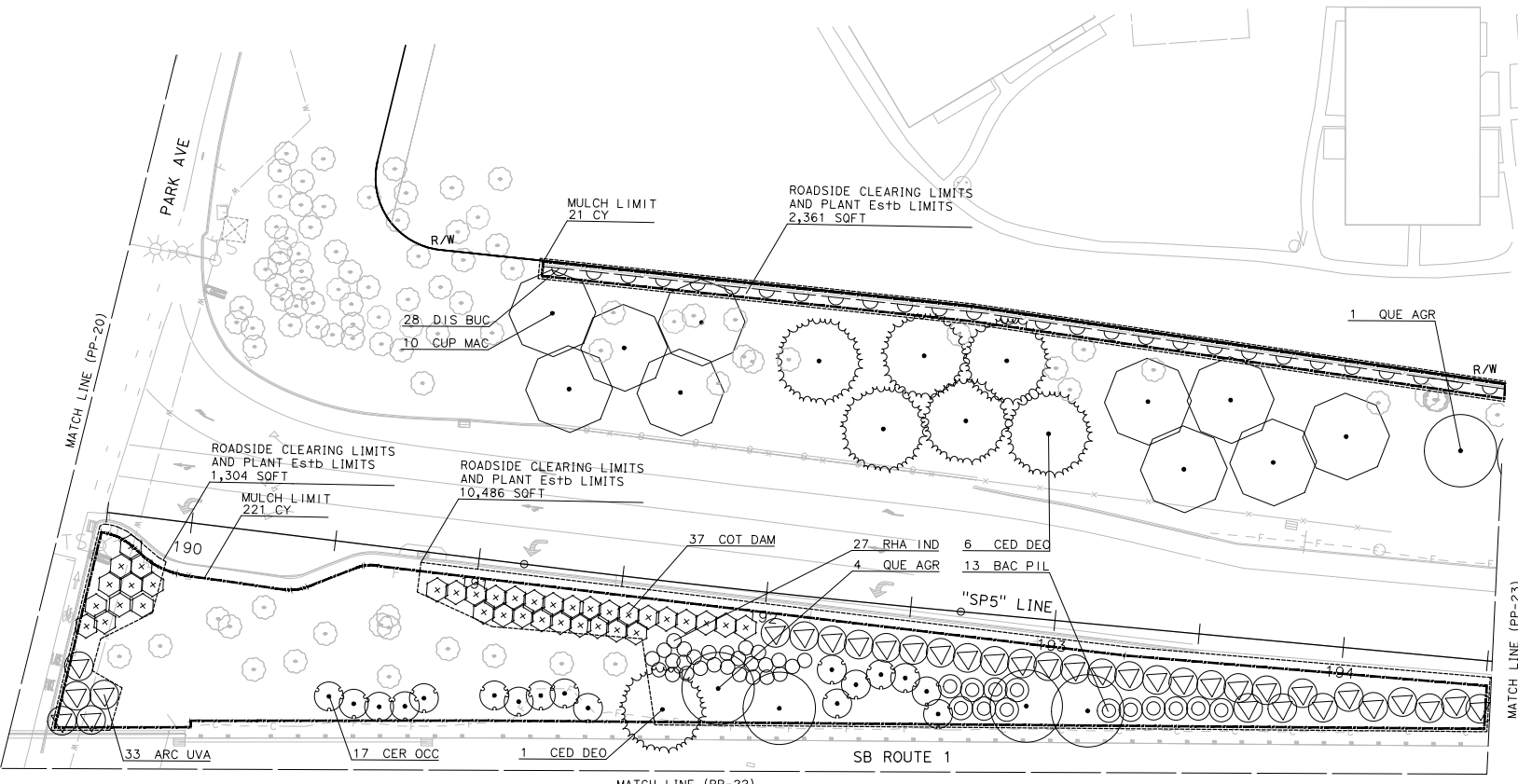
Dist	COUNTY	ROUTE	POST MILES TOTAL PROJECT	SHEET No.	TOTAL SHEETS
05	SCr	1	10.5/13.4		620

**100% DRAFT**  
 LICENSED LANDSCAPE ARCHITECT DATE \_\_\_\_\_  
 PLANS APPROVAL DATE \_\_\_\_\_

THE STATE OF CALIFORNIA OR ITS OFFICERS OR AGENTS SHALL NOT BE RESPONSIBLE FOR THE ACCURACY OR COMPLETENESS OF SCANNED COPIES OF THIS PLAN SHEET.

MARK THOMAS  
 701 UNIVERSITY AVENUE  
 SUITE 200  
 SACRAMENTO, CA 95825

SANTA CRUZ COUNTY REGIONAL TRANSPORTATION COMMISSION  
 1523 PACIFIC AVENUE  
 SANTA CRUZ, CA 95060



APPROVED FOR PLANTING WORK ONLY

**PLANTING PLAN**

SCALE: 1" = 20'

**PP-21**

LAST REVISION DATE PLOTTED => 4-Apr-22  
 00-00-00 TIME PLOTTED => 13:50

STATE OF CALIFORNIA - DEPARTMENT OF TRANSPORTATION  
**Caltrans**  
 CONSULTANT FUNCTIONAL SUPERVISOR: ERIK SMITH  
 CALCULATED-DESIGNED BY: BRENDAN ORE  
 CHECKED BY: CHRISTINE ANDERSON  
 REVISED BY: [ ]  
 DATE REVISED: [ ]

**NOTE:**  
 FOR ACCURATE RIGHT OF WAY DATA, CONTACT RIGHT OF WAY ENGINEERING AT THE DISTRICT OFFICE.

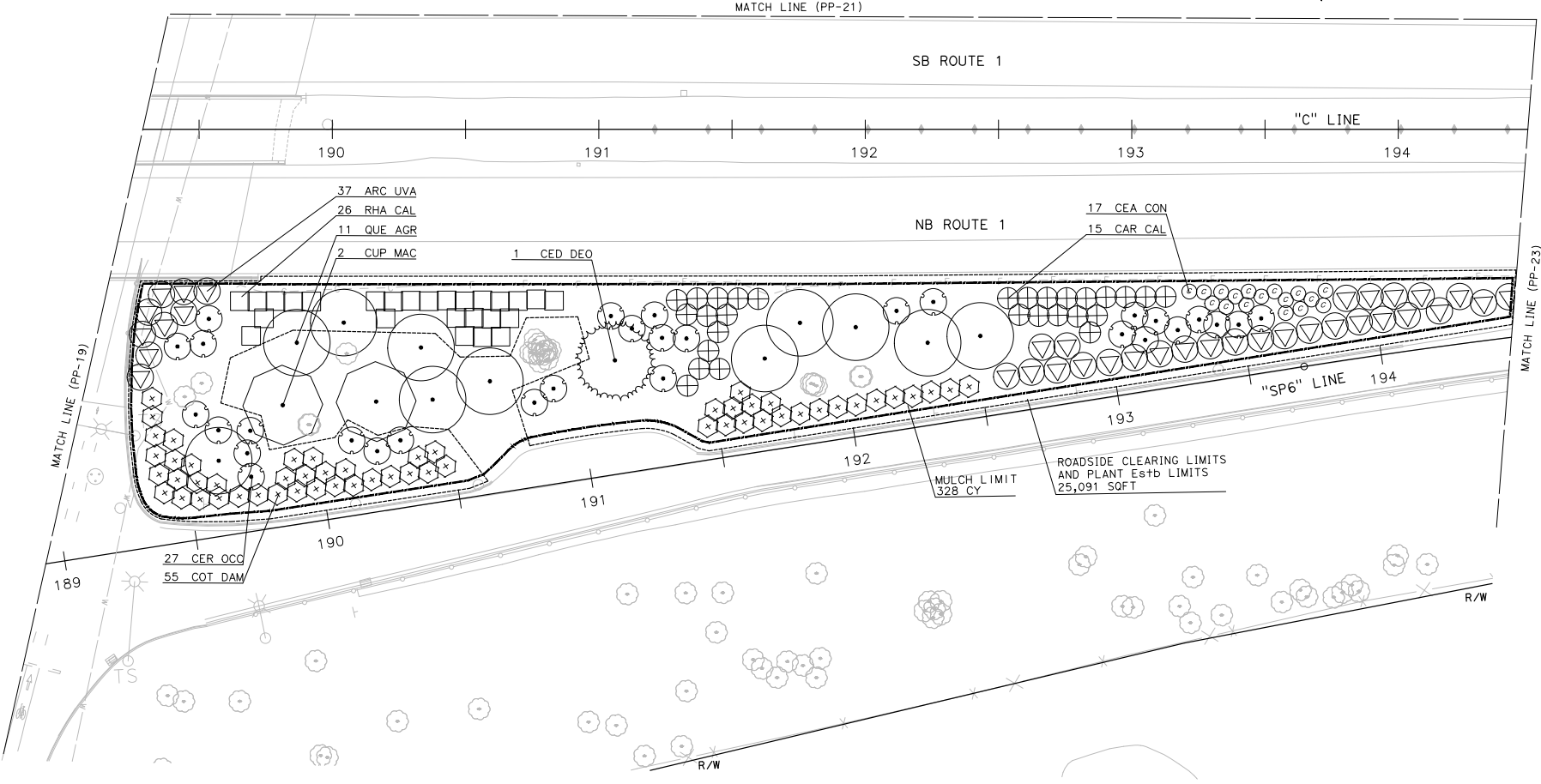
DIST	COUNTY	ROUTE	POST MILES TOTAL PROJECT	SHEET NO.	TOTAL SHEETS
05	SCR	1	10.5/13.4		620

**100% DRAFT**  
 LICENSED LANDSCAPE ARCHITECT DATE: [ ]  
 PLANS APPROVAL DATE: [ ]

THE STATE OF CALIFORNIA OR ITS OFFICERS OR AGENTS SHALL NOT BE RESPONSIBLE FOR THE ACCURACY OR COMPLETENESS OF SCANNED COPIES OF THIS PLAN SHEET.

MARK THOMAS  
 701 UNIVERSITY AVENUE  
 SUITE 200  
 SACRAMENTO, CA 95825

SANTA CRUZ COUNTY REGIONAL TRANSPORTATION COMMISSION  
 1523 PACIFIC AVENUE  
 SANTA CRUZ, CA 95060



APPROVED FOR PLANTING WORK ONLY

**PLANTING PLAN**  
 SCALE: 1" = 20'  
**PP-22**

LAST REVISION DATE PLOTTED => 4-MAR-22  
 00-00-00 TIME PLOTTED => 13:51

STATE OF CALIFORNIA - DEPARTMENT OF TRANSPORTATION  
**Caltrans**  
 CONSULTANT FUNCTIONAL SUPERVISOR: ERIK SMITH  
 CHECKED BY: CHRISTINE ANDERSON  
 DESIGNED BY: BRENDAN ORE  
 REVISOR: DATE  
 REVISION: DATE

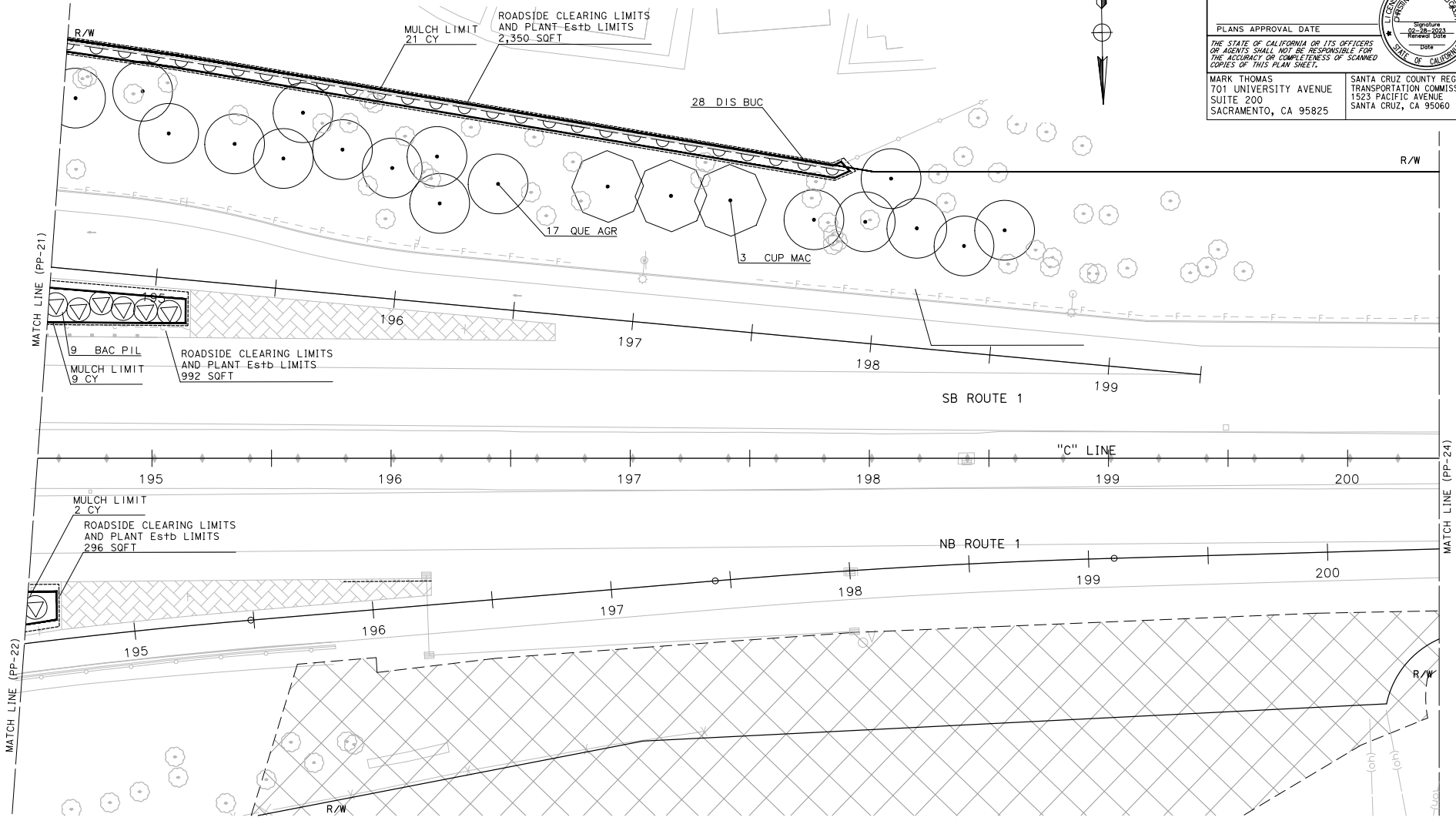
**NOTE:**  
 FOR ACCURATE RIGHT OF WAY DATA, CONTACT RIGHT OF WAY ENGINEERING AT THE DISTRICT OFFICE.

DIST	COUNTY	ROUTE	POST MILES TOTAL PROJECT	SHEET No.	TOTAL SHEETS
05	ScR	1	10.5/13.4		620

**100% DRAFT**  
 LICENSED LANDSCAPE ARCHITECT DATE \_\_\_\_\_  
 PLANS APPROVAL DATE \_\_\_\_\_

THE STATE OF CALIFORNIA OR ITS OFFICERS OR AGENTS SHALL NOT BE RESPONSIBLE FOR THE ACCURACY OR COMPLETENESS OF SCANNED COPIES OF THIS PLAN SHEET.

MARK THOMAS 701 UNIVERSITY AVENUE SUITE 200 SACRAMENTO, CA 95825	SANTA CRUZ COUNTY REGIONAL TRANSPORTATION COMMISSION 1523 PACIFIC AVENUE SANTA CRUZ, CA 95060
---	---



APPROVED FOR PLANTING WORK ONLY

**PLANTING PLAN**

SCALE: 1" = 20'

**PP-23**

DATE PLOTTED => 4-Mar-22  
 TIME PLOTTED => 13:52



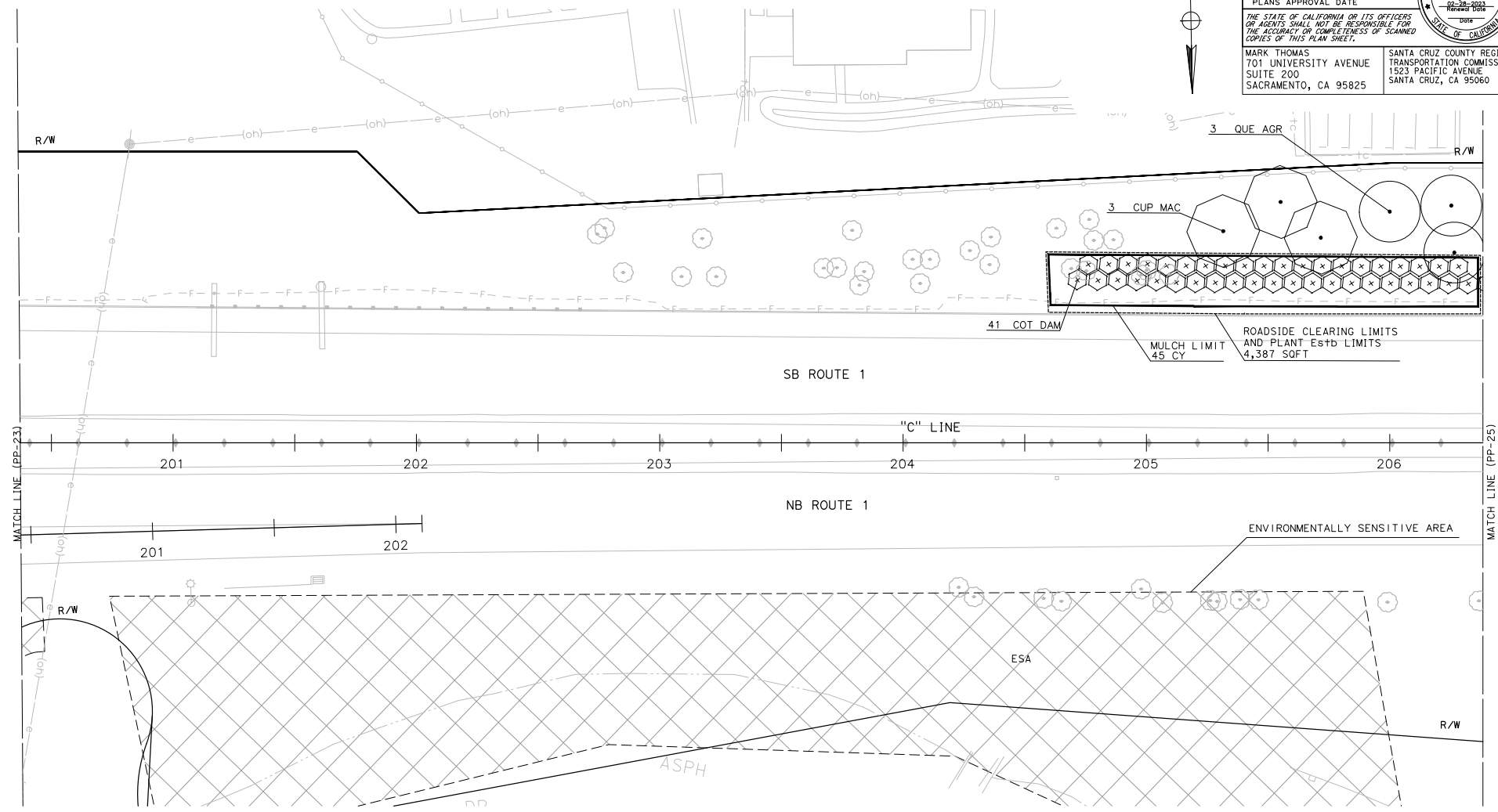
STATE OF CALIFORNIA - DEPARTMENT OF TRANSPORTATION  
**Caltrans**

CONSULTANT FUNCTIONAL SUPERVISOR  
 ERIK SMITH

CALCULATED-DESIGNED BY  
 CHECKED BY  
 BRENDAN ORE  
 CHRISTINE ANDERSON

REVISED BY  
 DATE REVISED

**NOTE:**  
 FOR ACCURATE RIGHT OF WAY DATA, CONTACT RIGHT OF WAY ENGINEERING AT THE DISTRICT OFFICE.



Dist	COUNTY	ROUTE	POST MILES TOTAL PROJECT	SHEET TOTAL No. SHEETS
05	Scr	1	10.5/13.4	620

**100% DRAFT**  
 LICENSED LANDSCAPE ARCHITECT DATE

PLANS APPROVAL DATE

THE STATE OF CALIFORNIA OR ITS OFFICERS OR AGENTS SHALL NOT BE RESPONSIBLE FOR THE ACCURACY OR COMPLETENESS OF SCANNED COPIES OF THIS PLAN SHEET.

MARK THOMAS  
 701 UNIVERSITY AVENUE  
 SUITE 200  
 SACRAMENTO, CA 95825

SANTA CRUZ COUNTY REGIONAL TRANSPORTATION COMMISSION  
 1523 PACIFIC AVENUE  
 SANTA CRUZ, CA 95060



APPROVED FOR PLANTING WORK ONLY

**PLANTING PLAN**

SCALE: 1" = 20'

**PP-24**

LAST REVISION DATE PLOTTED => 4-Mar-22  
 00-00-00 TIME PLOTTED => 13:55

STATE OF CALIFORNIA - DEPARTMENT OF TRANSPORTATION  
**Gilberts**  
 CONSULTANT FUNCTIONAL SUPERVISOR  
 ERIK SMITH  
 CHECKED BY  
 CHRISTINE ANDERSON  
 DESIGNED BY  
 BRENDAN ORE  
 REVISIONS  
 DATE  
 REVISIONS  
 DATE

**NOTE:**  
 FOR ACCURATE RIGHT OF WAY DATA, CONTACT RIGHT  
 OF WAY ENGINEERING AT THE DISTRICT OFFICE.

DIST	COUNTY	ROUTE	POST MILES TOTAL PROJECT	SHEET No.	TOTAL SHEETS
05	Scr	1	10.5/13.4		620

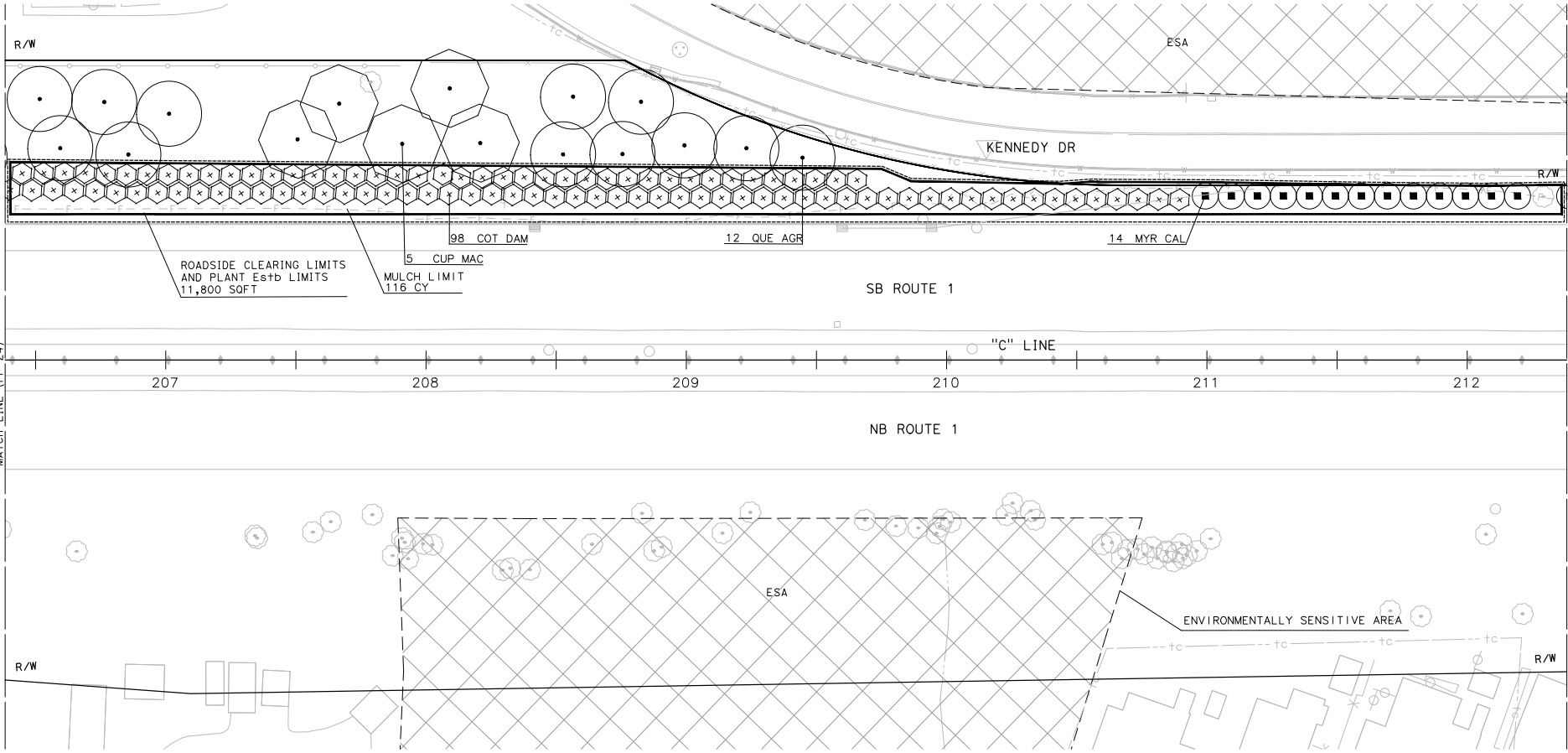
**100% DRAFT**  
 LICENSED LANDSCAPE ARCHITECT DATE

PLANS APPROVAL DATE

THE STATE OF CALIFORNIA OR ITS OFFICERS OR AGENTS SHALL NOT BE RESPONSIBLE FOR THE ACCURACY OR COMPLETENESS OF SCANNED COPIES OF THIS PLAN SHEET.

MARK THOMAS  
 701 UNIVERSITY AVENUE  
 SUITE 200  
 SACRAMENTO, CA 95825

SANTA CRUZ COUNTY REGIONAL TRANSPORTATION COMMISSION  
 1523 PACIFIC AVENUE  
 SANTA CRUZ, CA 95060



APPROVED FOR PLANTING WORK ONLY

**PLANTING PLAN**  
 SCALE: 1" = 20'  
**PP-25**

LAST REVISION DATE PLOTTED => 4-MAR-22  
 00-00-00 TIME PLOTTED => 1:34:54

STATE OF CALIFORNIA - DEPARTMENT OF TRANSPORTATION  
**Caltrans**  
 CONSULTANT FUNCTIONAL SUPERVISOR  
 ERIK SMITH  
 CHECKED BY  
 CHRISTINE ANDERSON  
 DESIGNED BY  
 BRENDAN ORE  
 REVISIONS  
 DATE  
 REVISIONS  
 DATE

**NOTE:**  
 FOR ACCURATE RIGHT OF WAY DATA, CONTACT RIGHT OF WAY ENGINEERING AT THE DISTRICT OFFICE.

Dist	COUNTY	ROUTE	POST MILES TOTAL PROJECT	SHEET No.	TOTAL SHEETS
05	SCR	1	10.5/13.4		620

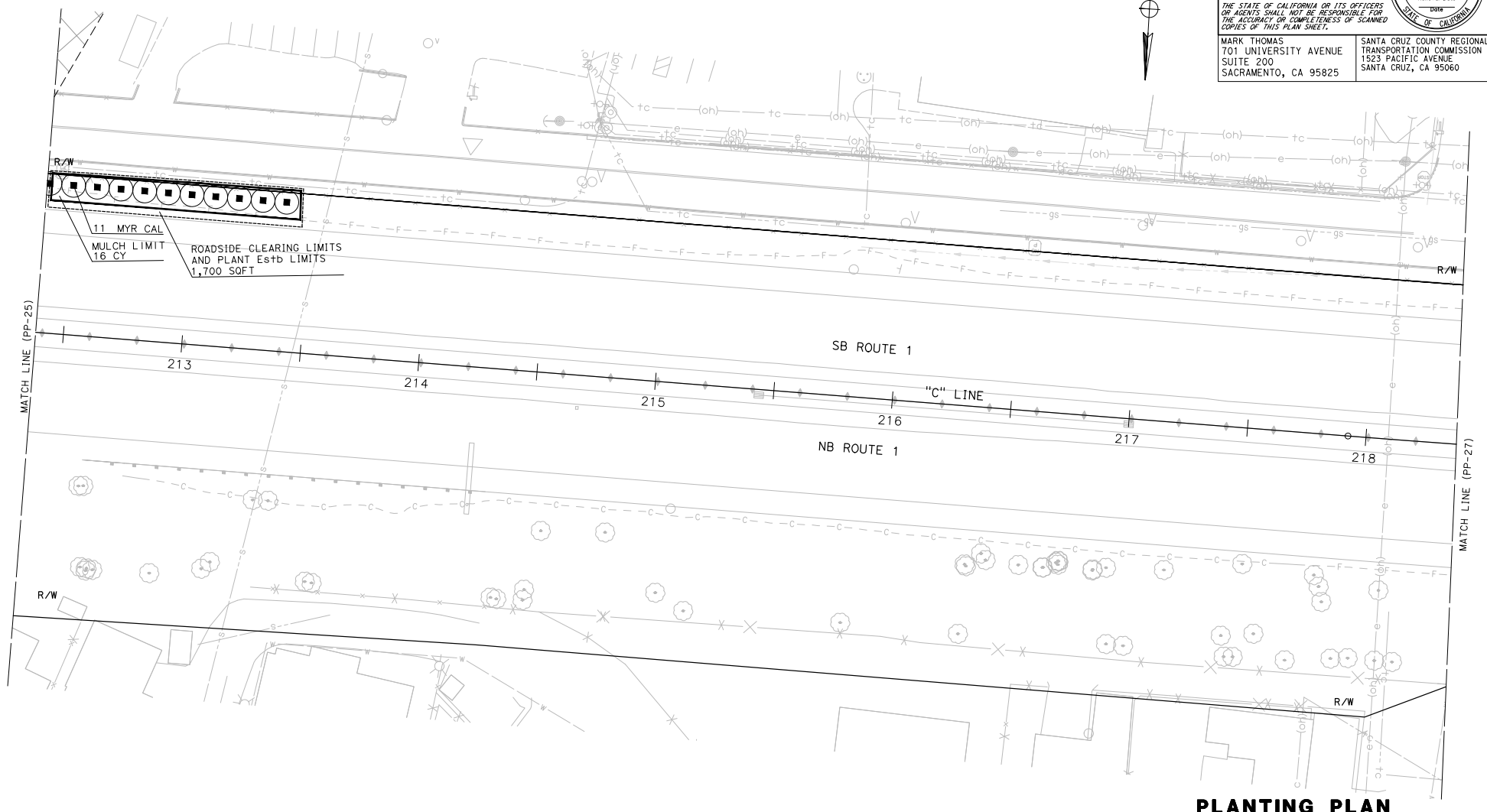
**100% DRAFT**  
 LICENSED LANDSCAPE ARCHITECT DATE

PLANS APPROVAL DATE

THE STATE OF CALIFORNIA OR ITS OFFICERS OR AGENTS SHALL NOT BE RESPONSIBLE FOR THE ACCURACY OR COMPLETENESS OF SCANNED COPIES OF THIS PLAN SHEET.

MARK THOMAS  
 701 UNIVERSITY AVENUE  
 SUITE 200  
 SACRAMENTO, CA 95825

SANTA CRUZ COUNTY REGIONAL TRANSPORTATION COMMISSION  
 1523 PACIFIC AVENUE  
 SANTA CRUZ, CA 95060



APPROVED FOR PLANTING WORK ONLY

**PLANTING PLAN**  
 SCALE: 1" = 20'  
**PP-26**

LAST REVISION DATE PLOTTED => 14-MAR-22  
 00-00-00 TIME PLOTTED => 13:56

STATE OF CALIFORNIA - DEPARTMENT OF TRANSPORTATION  
**Caltrans**  
 CONSULTANT FUNCTIONAL SUPERVISOR  
 ERIK SMITH  
 CHECKED BY  
 CHRISTINE ANDERSON  
 DESIGNED BY  
 BRENDAN ORE  
 REVISIONS  
 DATE REVISIONS  
 DATE REVISIONS

**NOTE:**  
 FOR ACCURATE RIGHT OF WAY DATA, CONTACT RIGHT OF WAY ENGINEERING AT THE DISTRICT OFFICE.

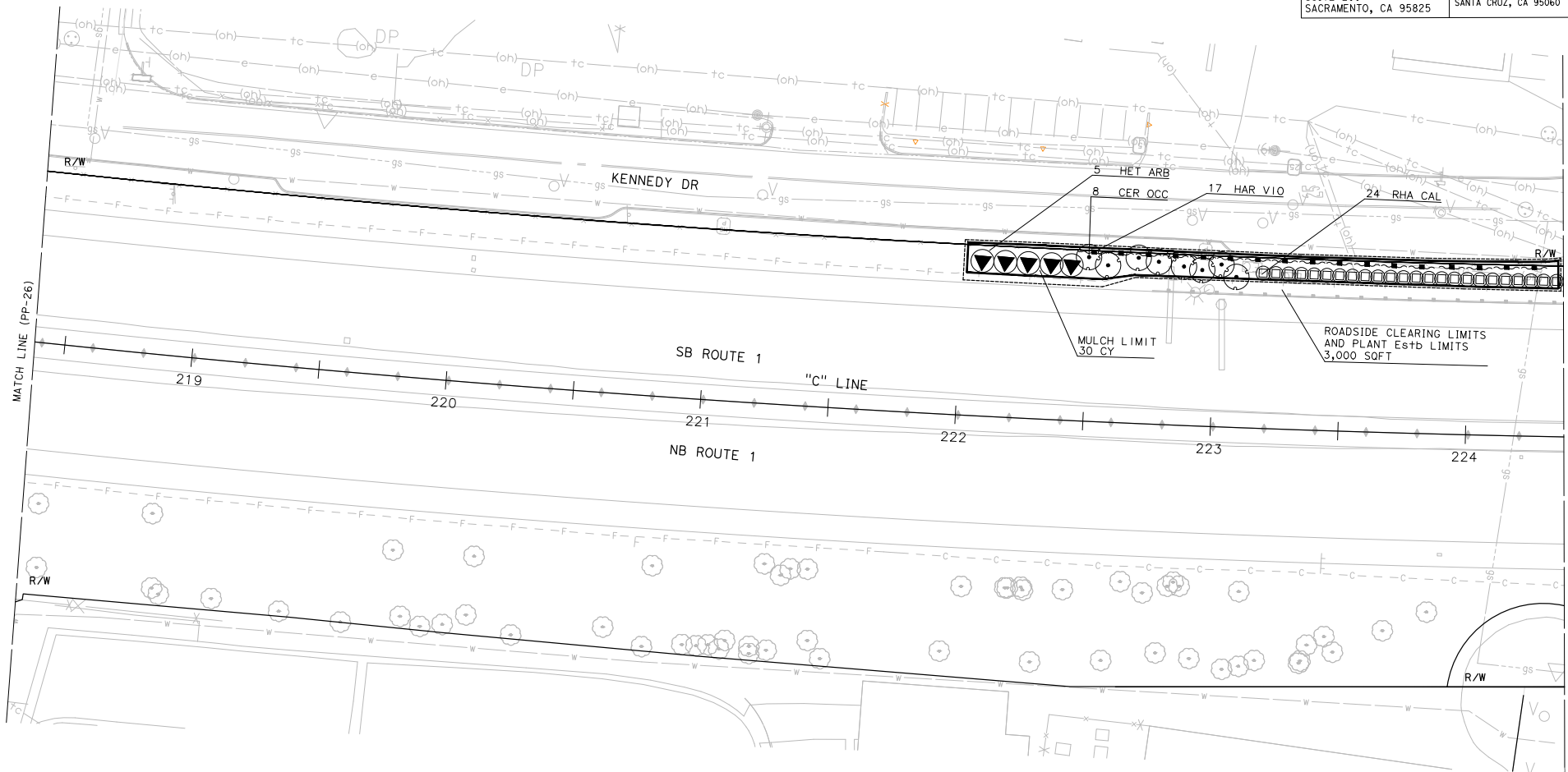
Dist	COUNTY	ROUTE	POST MILES TOTAL PROJECT	SHEET No.	TOTAL SHEETS
05	Scr	1	10.5/13.4	620	620

**100% DRAFT**  
 LICENSED LANDSCAPE ARCHITECT DATE \_\_\_\_\_  
 PLANS APPROVAL DATE \_\_\_\_\_

THE STATE OF CALIFORNIA OR ITS OFFICERS OR AGENCIES SHALL NOT BE RESPONSIBLE FOR THE ACCURACY OR COMPLETENESS OF SCANNED COPIES OF THIS PLAN SHEET.

MARK THOMAS  
 701 UNIVERSITY AVENUE  
 SUITE 200  
 SACRAMENTO, CA 95825

SANTA CRUZ COUNTY REGIONAL TRANSPORTATION COMMISSION  
 1523 PACIFIC AVENUE  
 SANTA CRUZ, CA 95060



APPROVED FOR PLANTING WORK ONLY

**PLANTING PLAN**

SCALE: 1" = 20'

**PP-27**

DATE PLOTTED => 4-Mar-22  
 TIME PLOTTED => 13:57